



AMISFIELD QUARRY

DECEMBER 2021

EXISTING QUARRY LAYOUT



Entrance

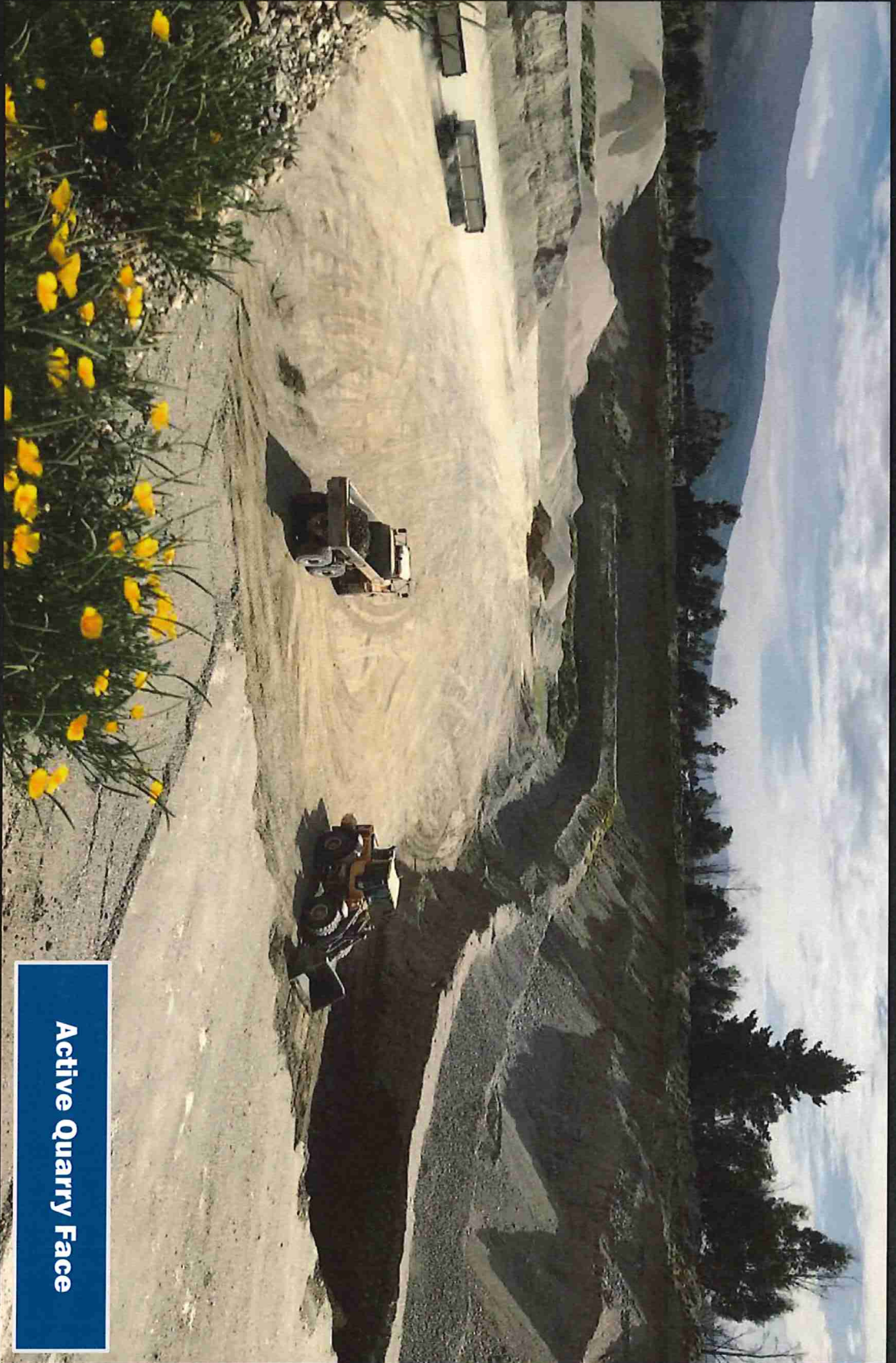
Sediment ponds

Mobile crushing

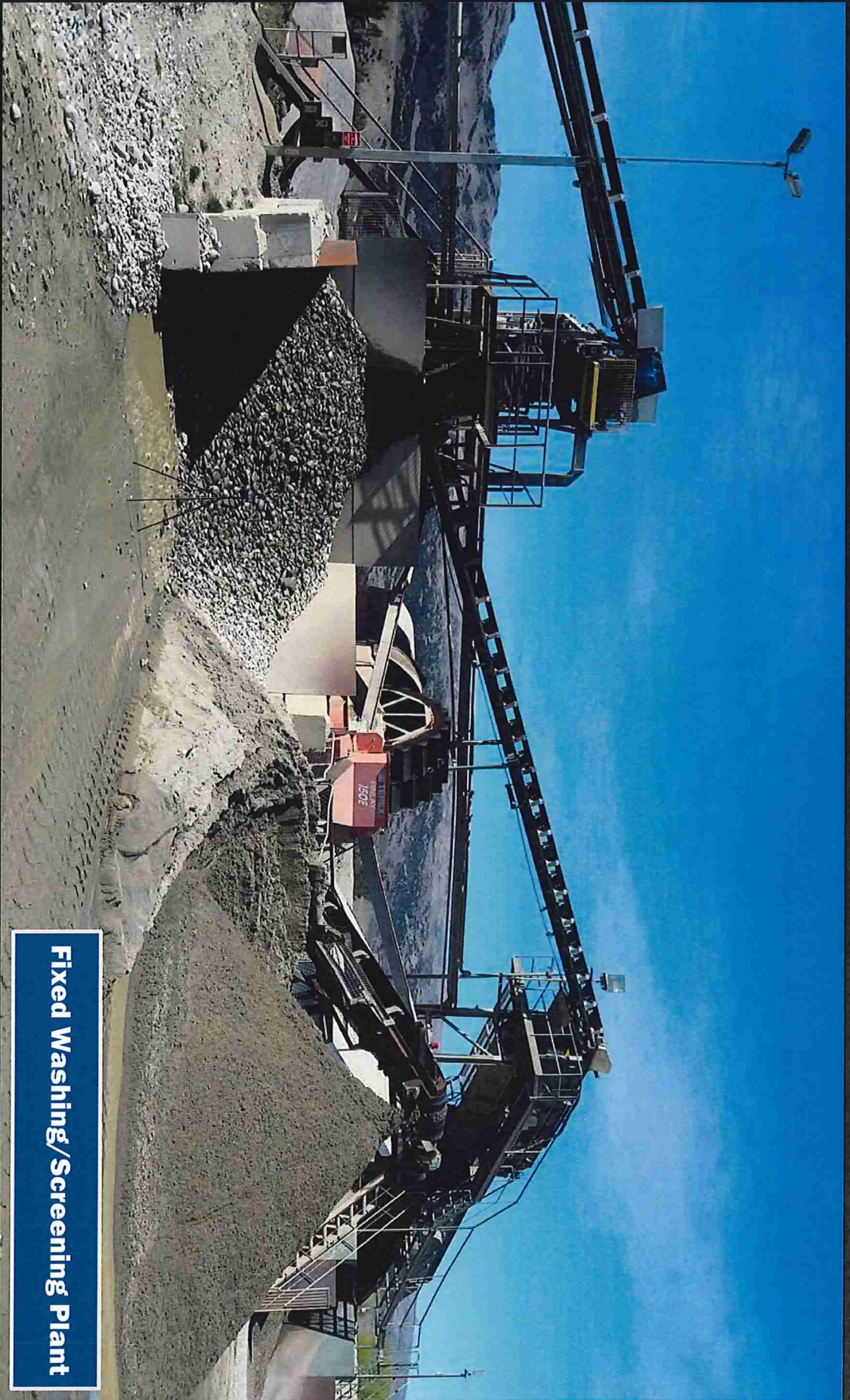
Fixed plant

Workshop/office

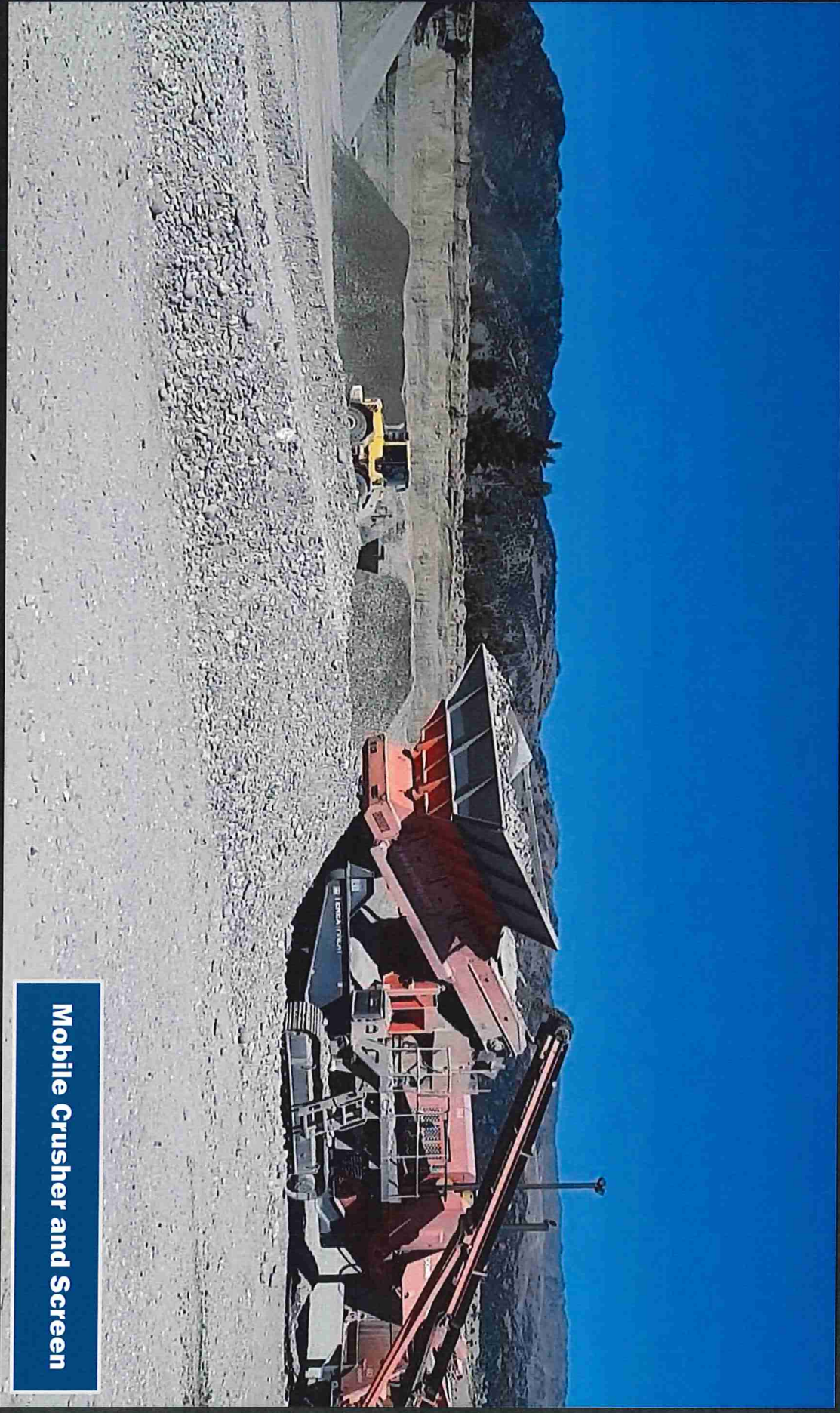
Amsfield Quarry



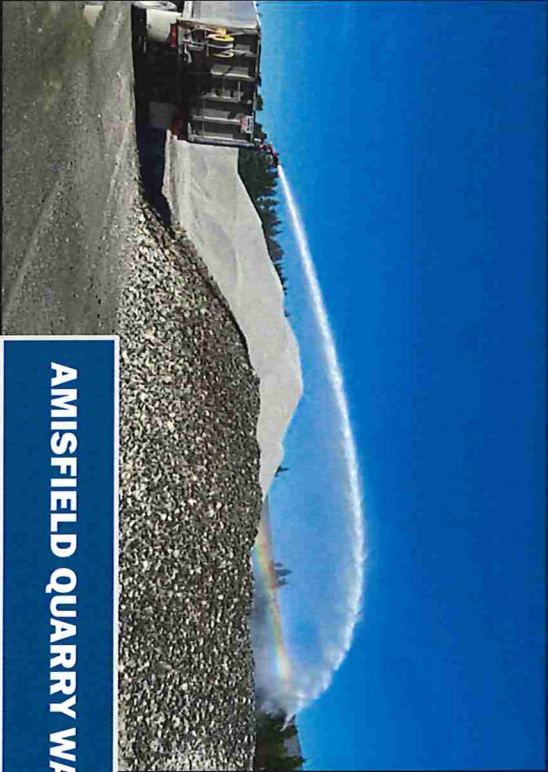
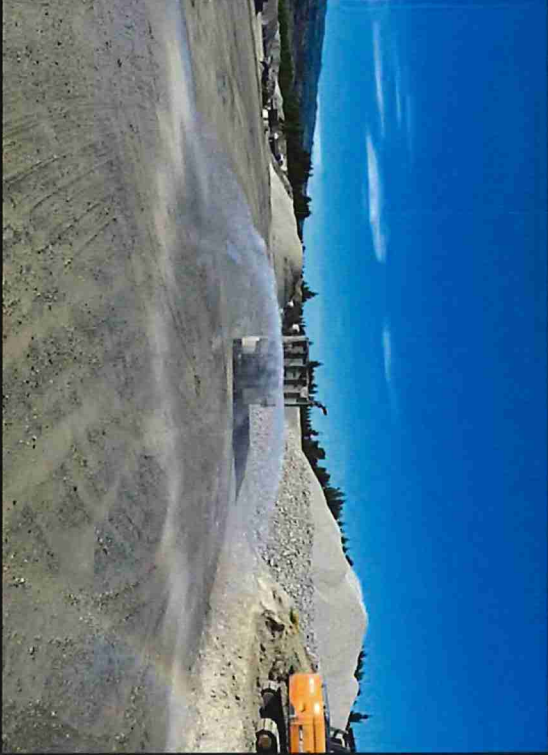
Active Quarry Face



Fixed Washing/Screening Plant



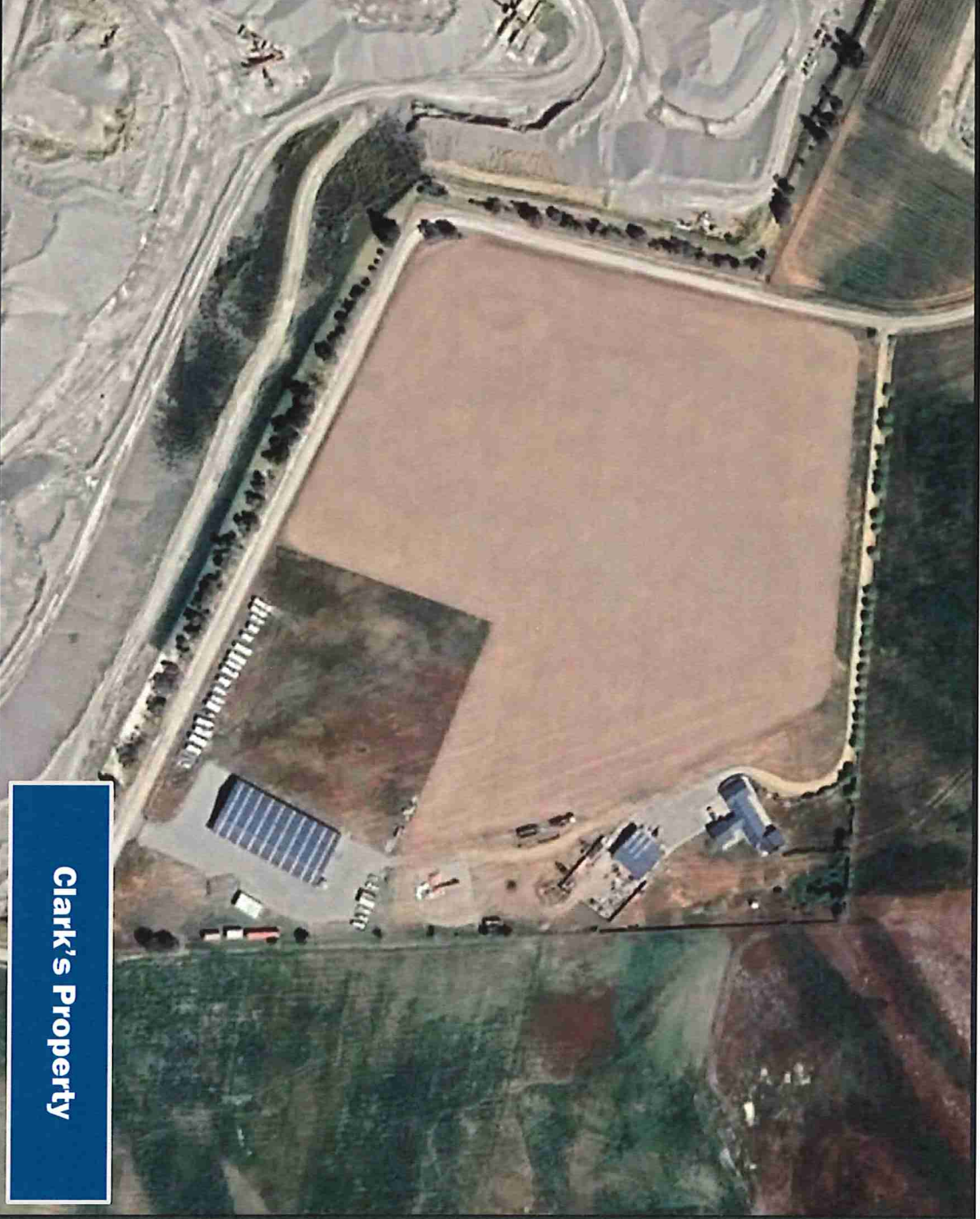
Mobile Crusher and Screen



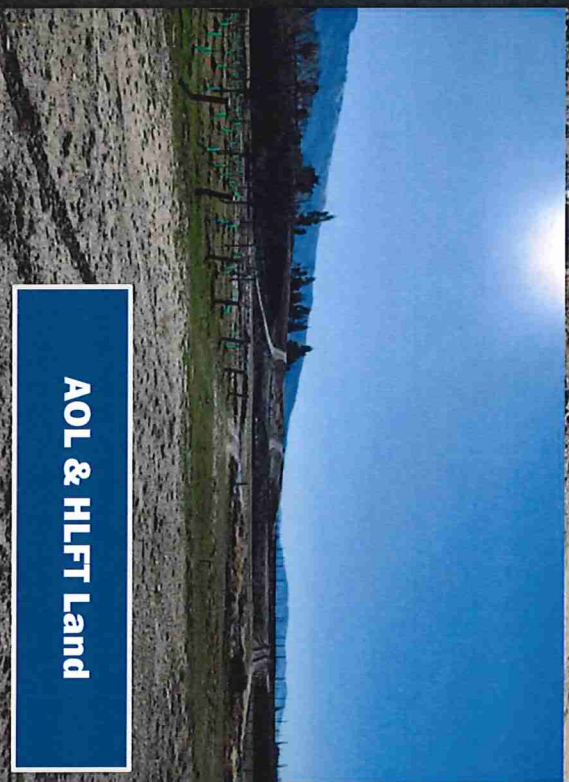
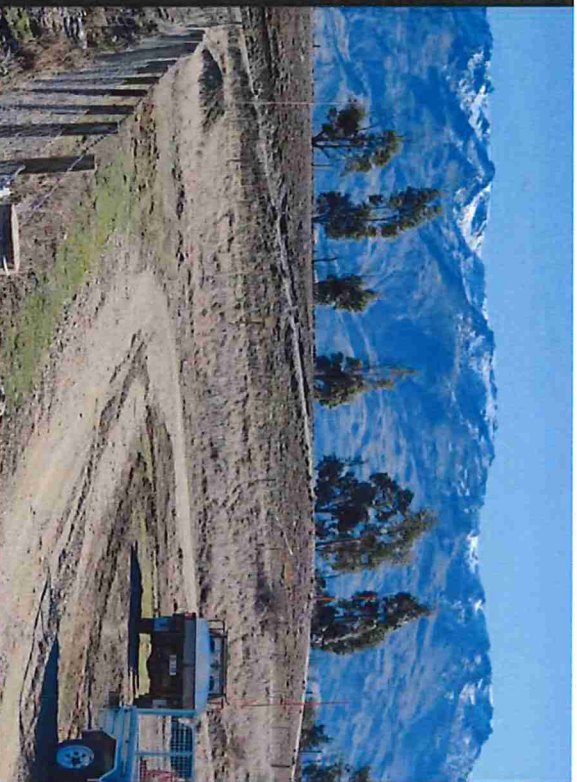
AMISFIELD QUARRY WATERCART

SURROUNDING LAND USES



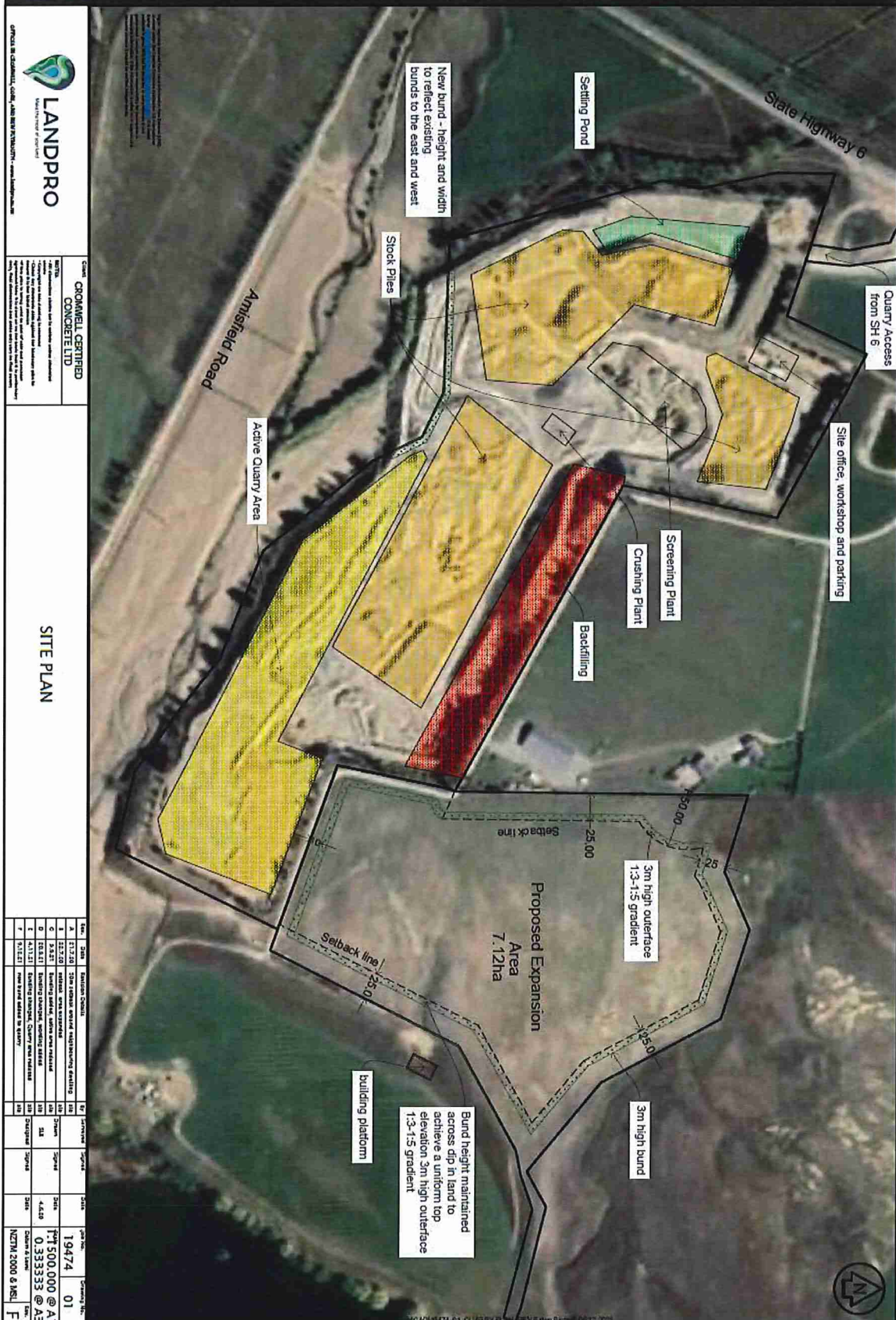


Clark's Property



AOL & HLFT Land

PROPOSED SITE PLAN



LANDPRO
 CONSULTANTS
 OFFICE 10, CASHMILL, 100A, JAMES BURN FERRYWAY, - 1000, HAMILTON, N.Z.

Client: **CONWELL CERTIFIED CONCRETE LTD**

Project: **CONCRETE LTD**

Site: **CONCRETE LTD**

Scale: **1:1000**

Date: **10/12/2020**

Author: **LANDPRO**

Check: **LANDPRO**

Drawn: **LANDPRO**

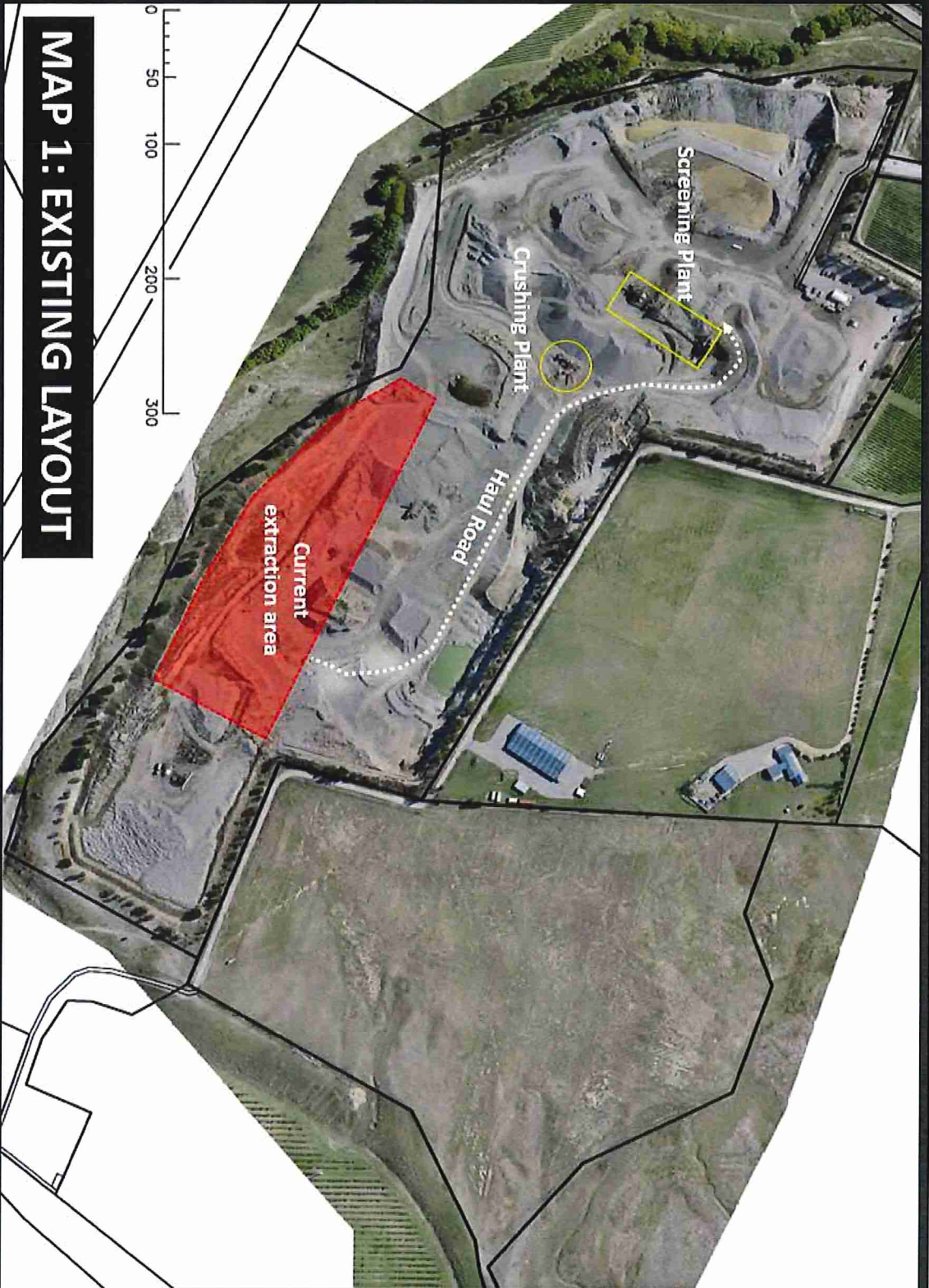
Approved: **LANDPRO**

Notes: **CONCRETE LTD**

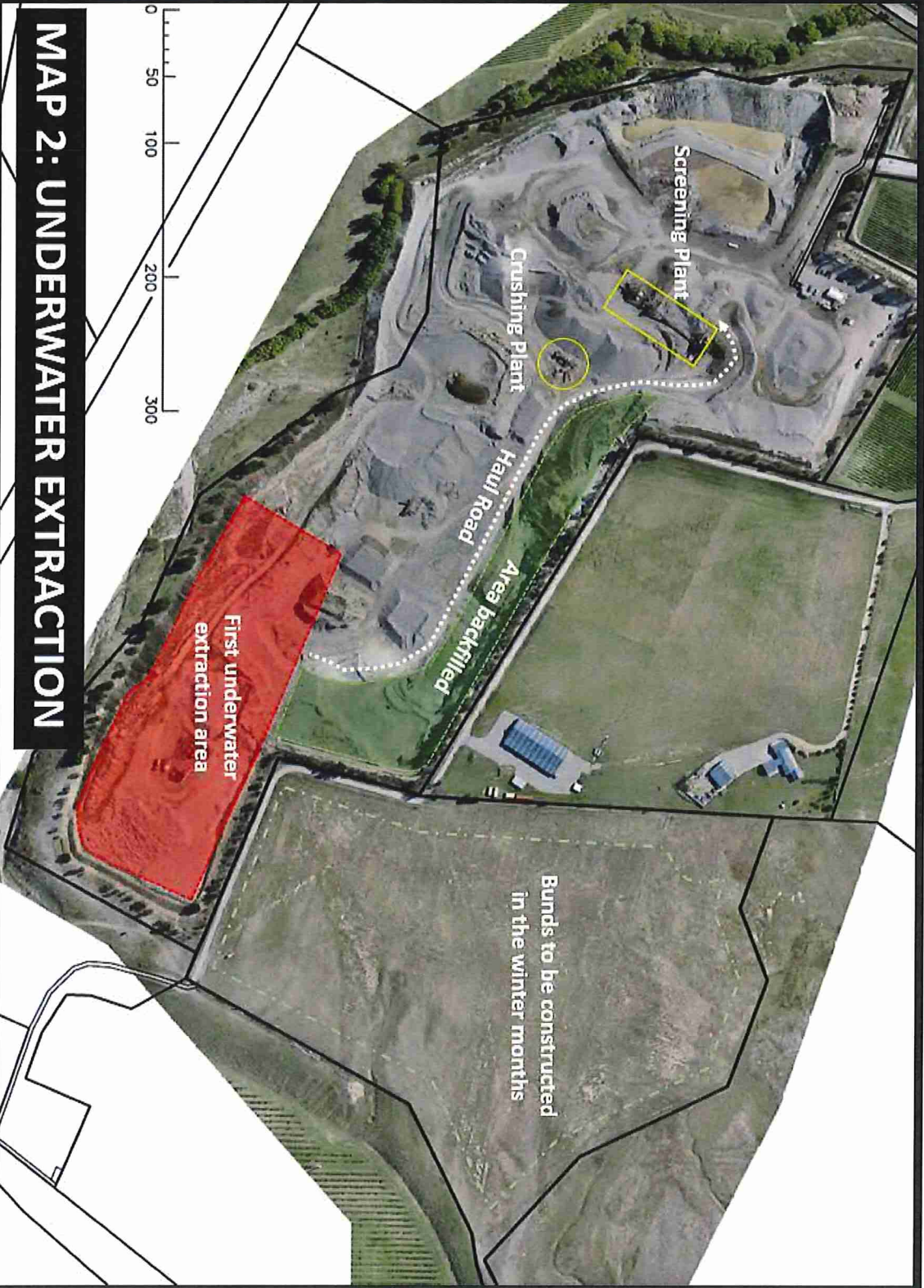
SITE PLAN

Item	Qty	Unit	Description	Value	Notes
1	1	Lot	CONCRETE LTD	19474	01
2	1	Lot	CONCRETE LTD	11500,000 @ A1	
3	1	Lot	CONCRETE LTD	0.333333 @ A3	
4	1	Lot	CONCRETE LTD		
5	1	Lot	CONCRETE LTD		
6	1	Lot	CONCRETE LTD		
7	1	Lot	CONCRETE LTD		
8	1	Lot	CONCRETE LTD		
9	1	Lot	CONCRETE LTD		
10	1	Lot	CONCRETE LTD		
11	1	Lot	CONCRETE LTD		
12	1	Lot	CONCRETE LTD		
13	1	Lot	CONCRETE LTD		
14	1	Lot	CONCRETE LTD		
15	1	Lot	CONCRETE LTD		
16	1	Lot	CONCRETE LTD		
17	1	Lot	CONCRETE LTD		
18	1	Lot	CONCRETE LTD		
19	1	Lot	CONCRETE LTD		
20	1	Lot	CONCRETE LTD		
21	1	Lot	CONCRETE LTD		
22	1	Lot	CONCRETE LTD		
23	1	Lot	CONCRETE LTD		
24	1	Lot	CONCRETE LTD		
25	1	Lot	CONCRETE LTD		
26	1	Lot	CONCRETE LTD		
27	1	Lot	CONCRETE LTD		
28	1	Lot	CONCRETE LTD		
29	1	Lot	CONCRETE LTD		
30	1	Lot	CONCRETE LTD		
31	1	Lot	CONCRETE LTD		
32	1	Lot	CONCRETE LTD		
33	1	Lot	CONCRETE LTD		
34	1	Lot	CONCRETE LTD		
35	1	Lot	CONCRETE LTD		
36	1	Lot	CONCRETE LTD		
37	1	Lot	CONCRETE LTD		
38	1	Lot	CONCRETE LTD		
39	1	Lot	CONCRETE LTD		
40	1	Lot	CONCRETE LTD		
41	1	Lot	CONCRETE LTD		
42	1	Lot	CONCRETE LTD		
43	1	Lot	CONCRETE LTD		
44	1	Lot	CONCRETE LTD		
45	1	Lot	CONCRETE LTD		
46	1	Lot	CONCRETE LTD		
47	1	Lot	CONCRETE LTD		
48	1	Lot	CONCRETE LTD		
49	1	Lot	CONCRETE LTD		
50	1	Lot	CONCRETE LTD		
51	1	Lot	CONCRETE LTD		
52	1	Lot	CONCRETE LTD		
53	1	Lot	CONCRETE LTD		
54	1	Lot	CONCRETE LTD		
55	1	Lot	CONCRETE LTD		
56	1	Lot	CONCRETE LTD		
57	1	Lot	CONCRETE LTD		
58	1	Lot	CONCRETE LTD		
59	1	Lot	CONCRETE LTD		
60	1	Lot	CONCRETE LTD		
61	1	Lot	CONCRETE LTD		
62	1	Lot	CONCRETE LTD		
63	1	Lot	CONCRETE LTD		
64	1	Lot	CONCRETE LTD		
65	1	Lot	CONCRETE LTD		
66	1	Lot	CONCRETE LTD		
67	1	Lot	CONCRETE LTD		
68	1	Lot	CONCRETE LTD		
69	1	Lot	CONCRETE LTD		
70	1	Lot	CONCRETE LTD		
71	1	Lot	CONCRETE LTD		
72	1	Lot	CONCRETE LTD		
73	1	Lot	CONCRETE LTD		
74	1	Lot	CONCRETE LTD		
75	1	Lot	CONCRETE LTD		
76	1	Lot	CONCRETE LTD		
77	1	Lot	CONCRETE LTD		
78	1	Lot	CONCRETE LTD		
79	1	Lot	CONCRETE LTD		
80	1	Lot	CONCRETE LTD		
81	1	Lot	CONCRETE LTD		
82	1	Lot	CONCRETE LTD		
83	1	Lot	CONCRETE LTD		
84	1	Lot	CONCRETE LTD		
85	1	Lot	CONCRETE LTD		
86	1	Lot	CONCRETE LTD		
87	1	Lot	CONCRETE LTD		
88	1	Lot	CONCRETE LTD		
89	1	Lot	CONCRETE LTD		
90	1	Lot	CONCRETE LTD		
91	1	Lot	CONCRETE LTD		
92	1	Lot	CONCRETE LTD		
93	1	Lot	CONCRETE LTD		
94	1	Lot	CONCRETE LTD		
95	1	Lot	CONCRETE LTD		
96	1	Lot	CONCRETE LTD		
97	1	Lot	CONCRETE LTD		
98	1	Lot	CONCRETE LTD		
99	1	Lot	CONCRETE LTD		
100	1	Lot	CONCRETE LTD		

PROPOSED EXTRACTION PLAN

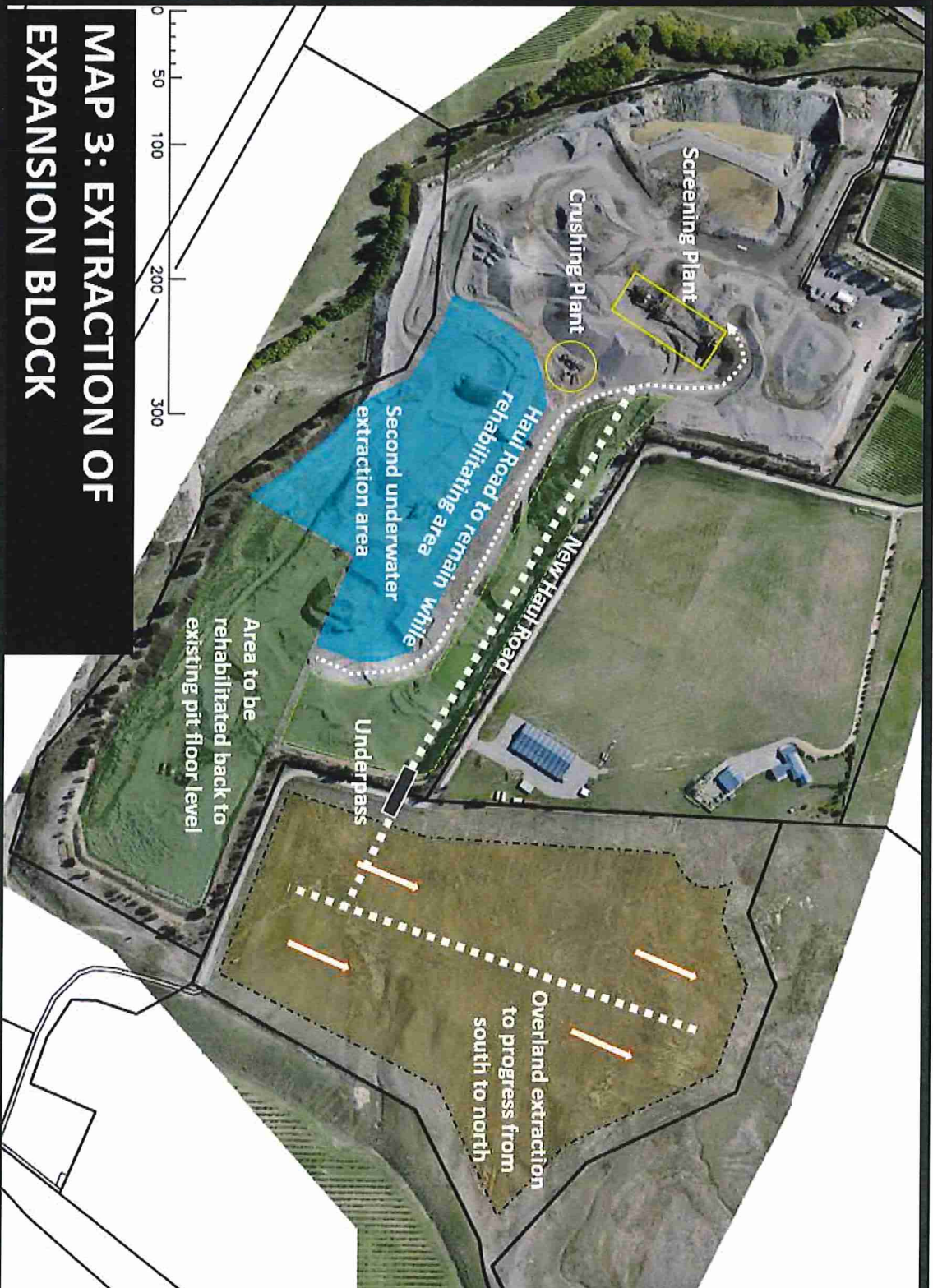


MAP 1: EXISTING LAYOUT



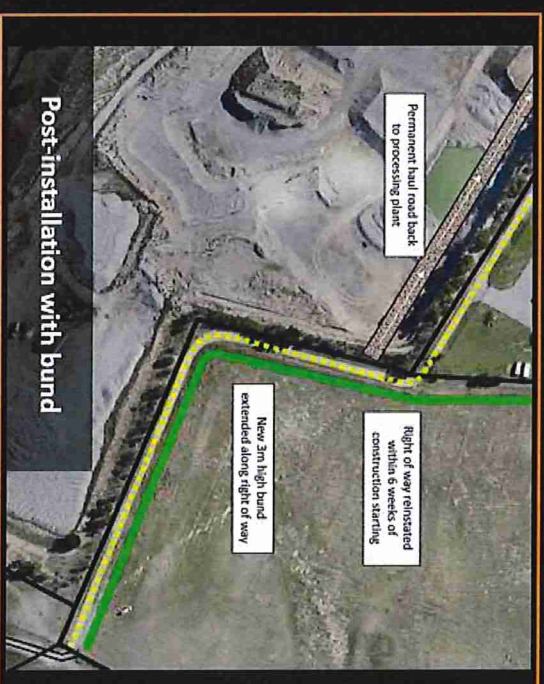
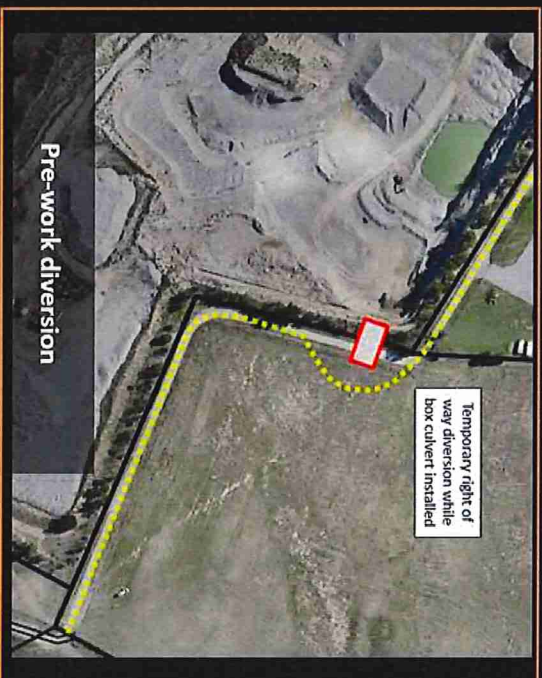
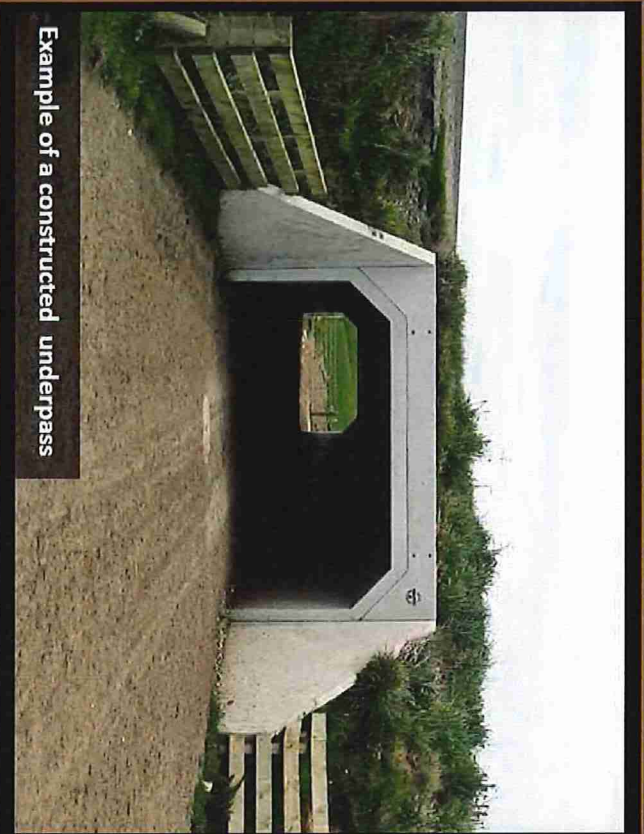
MAP 2: UNDERWATER EXTRACTION

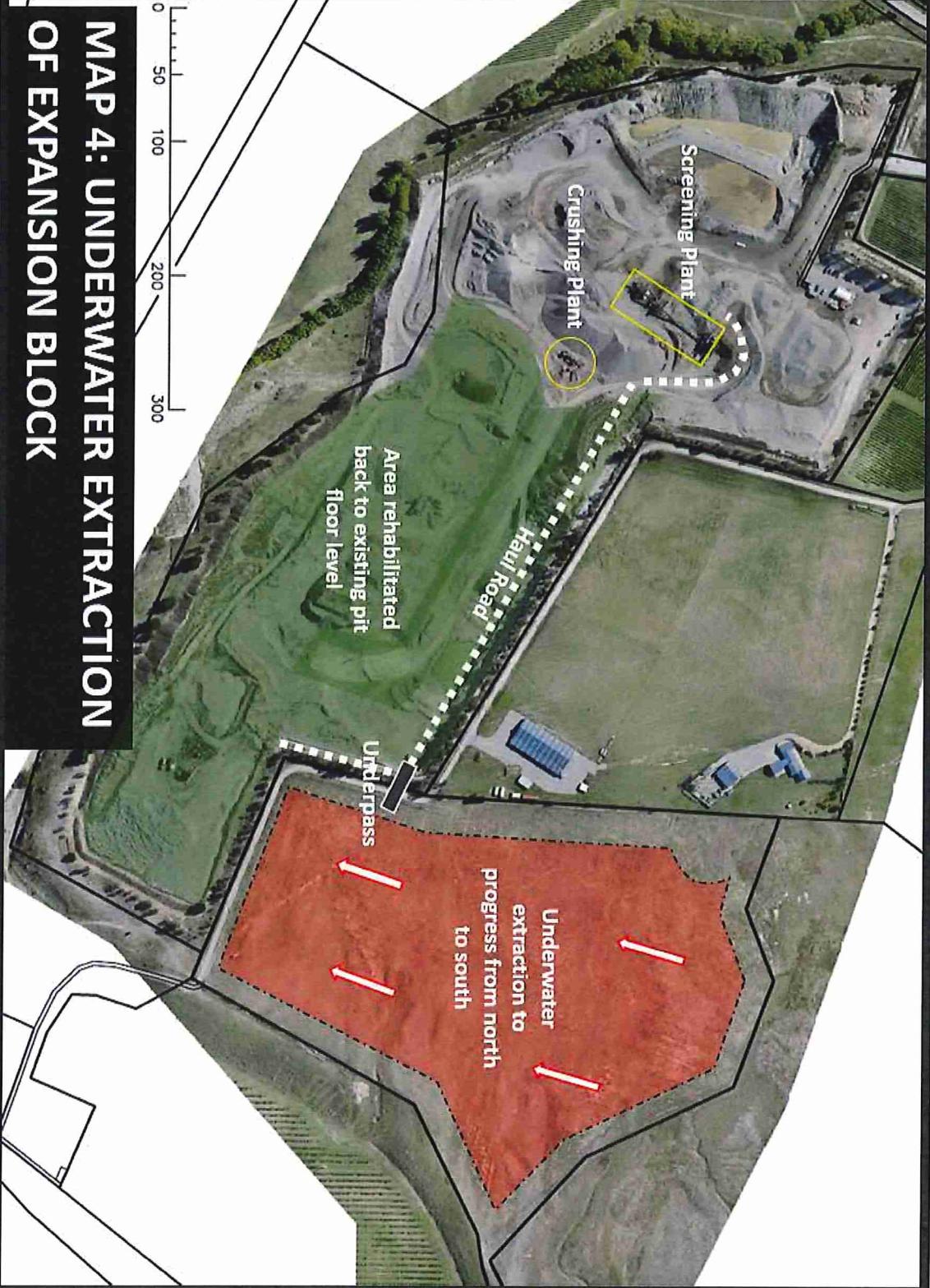




MAP 3: EXTRACTION OF EXPANSION BLOCK

Temporary Diversion and Bund Extension





**MAP 4: UNDERWATER EXTRACTION
OF EXPANSION BLOCK**

REHABILITATION TIMEFRAME

