

Developing Otago's new Land and Water Regional Plan

Online meeting with
Lower Clutha Rohe
community

Programme

7:00pm – Welcome and introductions

7:10pm – Mana whenua

7:20pm – ORC presentation and community
discussion

8:15pm – Any final questions and answers

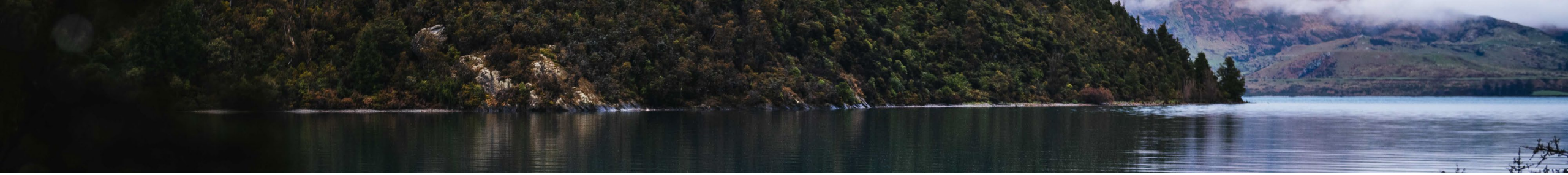
8:25pm - Next steps

8:30pm – Meeting finishes



The mana whenua perspective





What is a Land and Water Regional Plan?

- Tells us how we manage activities that have an impact on health of our freshwater and land
- Objectives & Policies – outcomes & how to get there
- Rules & Limits – controls on things we can and can't do, tells us when we need resource consent.



Why do we need a new Plan?

- Our current water plan is out-of-date
- Changing expectations
- New challenges and issues
- Need to give effect to new legislation



Te mana o te wai

new fundamental concept & shared responsibility

1st

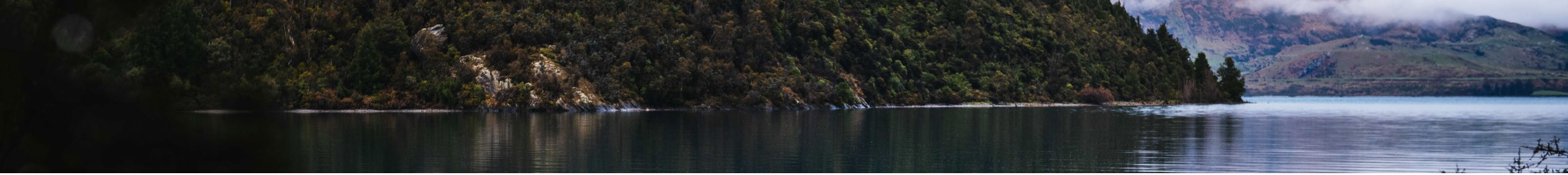
- The health and well-being of **water** bodies and freshwater ecosystems

2nd

- the health needs of **people** (such as drinking water)

3rd

- the ability of people and communities to provide for their **social, economic, and cultural** wellbeing, now and in the future

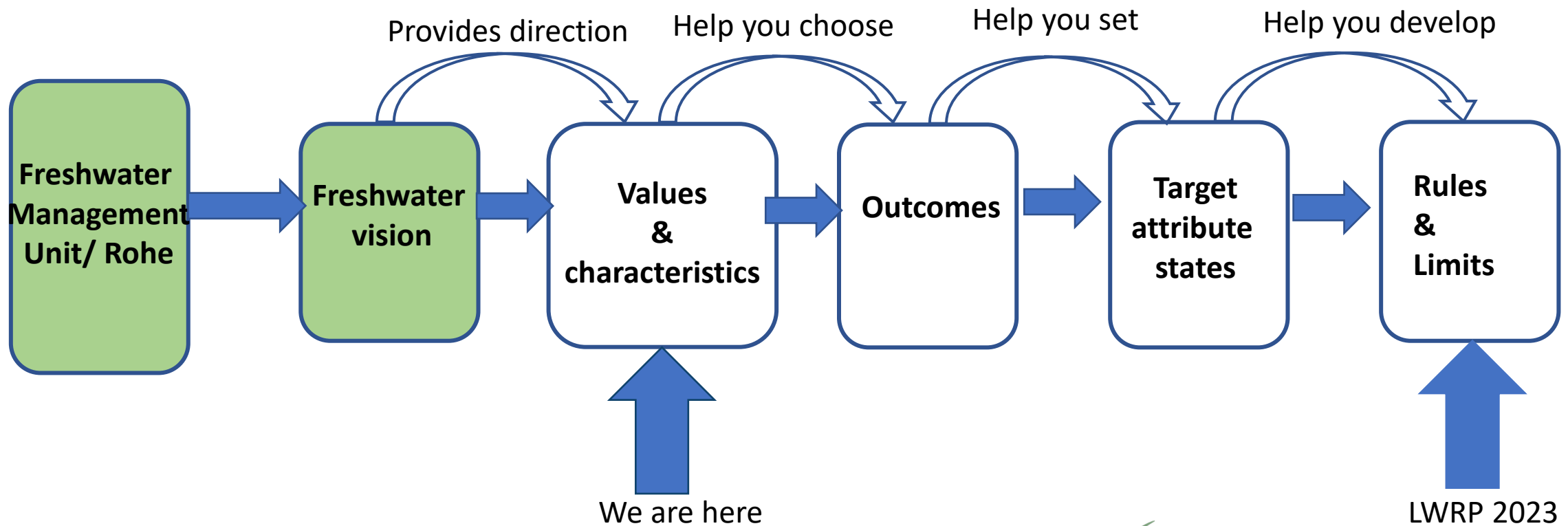


How are we doing this?

- Partnering with iwi
- Building on past consultation
- Collating new and existing technical information (hydrology, ecology, economics)
- Engaging with communities and whanau to better understand what you value and what you want the environment to look like in the future.



How are we doing this?





Proposed Lower Clutha rohe long-term

vision

- A single connected system with a pure water source
- Relationship of Kāi Tahu
- Sustain or restore the natural form and function
- Easy migration of indigenous species
- Clutha hydro-electricity generation scheme has national significance
- Connections between freshwater, wetlands and coast are preserved or restored
- Sustainable land management reducing contaminant discharges – safe human contact



Lower Clutha rohe values

Compulsory values

Ecosystem health

- *Water quality*
- *Water quantity (River flow and lake level)*
- *Habitat*
- *Aquatic life - Plants or animals that live in or near water*
- *Ecological processes*

Human contact (*swimming*)

Threatened species

Mahika kai

Values that must be considered

Natural character

Fishing

Water take and use

- *Hydro-electricity*
- *Animal drinking water*
- *Commercial & domestic use*
- *Economic, commercial or productive uses*
- *Drinking water*

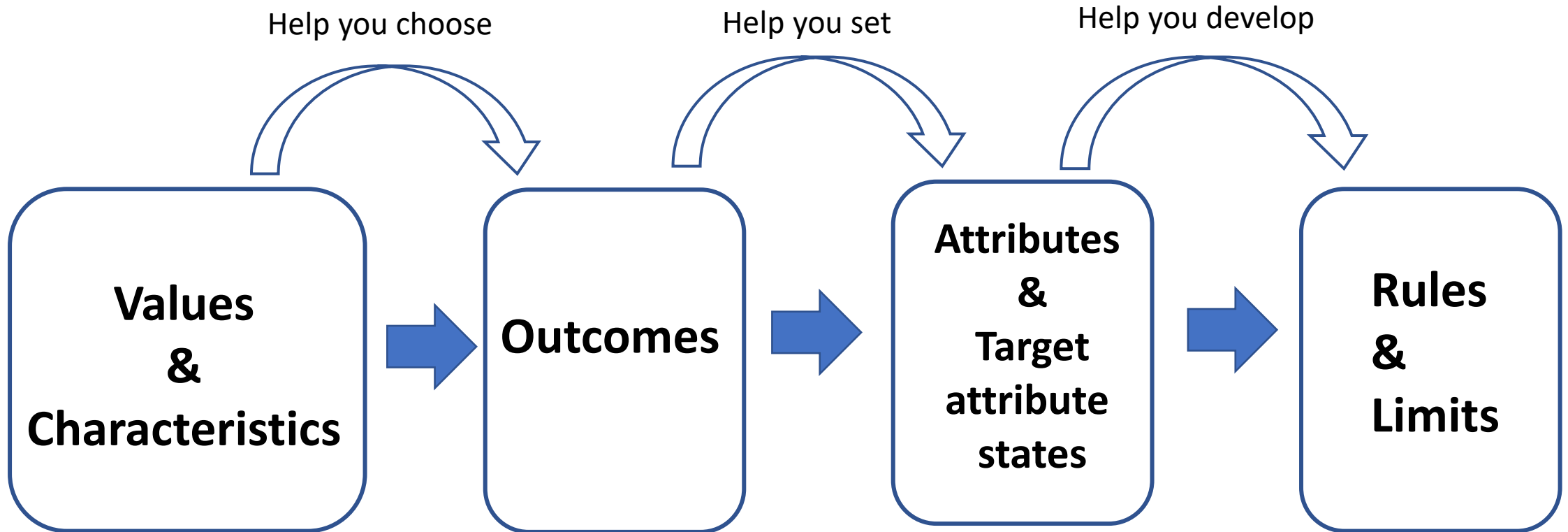
Wai tapu

Tauranga

Other values identified

- *Non-contact recreation (e.g. walking, camping & snow sports)*
- *...*

Example: Swimming



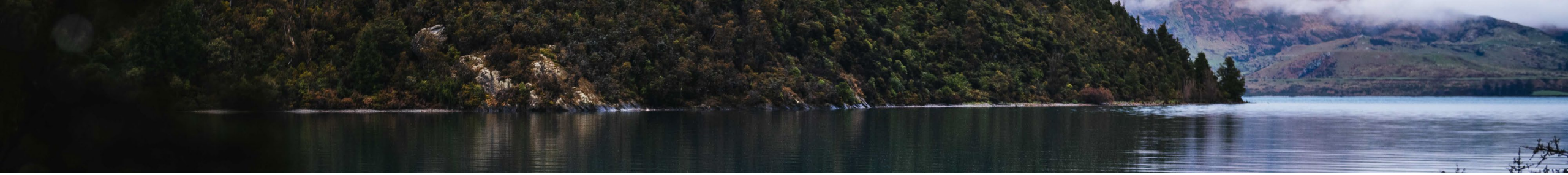
Value= Swimming

Characteristic =
Clean river bed
(low) risk of getting sick

Outcome=
Water bodies are clean
and have sufficient flow
for safe swimming year
round

Attribute= *E. coli*
Target attribute
state = 2%
exceedances
over 260/100mL

Output control=
Stormwater
discharges
Land use control=
Fencing



FMU/Rohe public meetings and consultation

1. Confirm values and discuss their characteristics (to inform setting environmental outcomes)
2. Present and discuss environment outcomes and management options to achieve outcomes
3. Present a preferred management option
4. Proposed Land and Water Regional Plan out for public submissions



How can you have a say?

- 1. [Talking us online](#) via Zoom.
- 2. [Completing the online survey](#) about the land and waterways in your area or request a hard copy (*Email customerservices@orc.govt.nz, or call [0800 474 082](tel:0800474082) to request a paper version of the survey.*)
- 3. Mark areas of significance on our [online waterways map](#).

https://yoursay.orc.govt.nz/lwrp2022?tool=map#tool_tab



Next steps & session wrap up

- We have your feedback from tonight
- Online survey closes 28 March 2022
- We will be in your area in person in the 2nd half of 2022 to talk about preferred management options
- Keep connected: www.orc.govt.nz

THANK YOU!

