



Developing Otago's new Land and Water Regional Plan



Welcome & introductions

David Cooper

Principal Advisor, Otago Regional Council

- Welcome
- What we're going to cover
- Introducing you to the ORC and iwi team
- Online meeting logistics
- Questions and answers
- Next steps



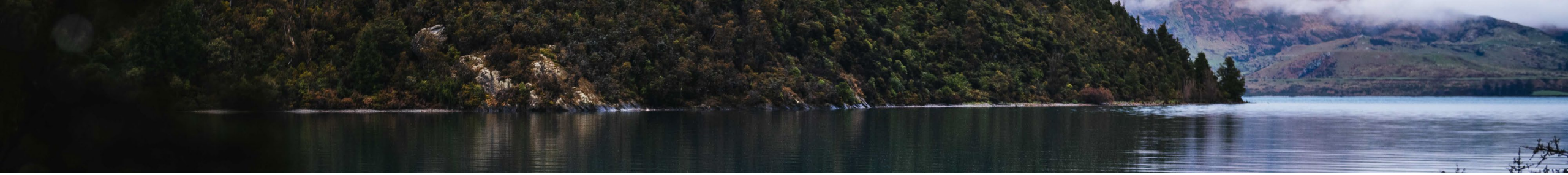
The mana whenua perspective



The Land & Water Regional Plan

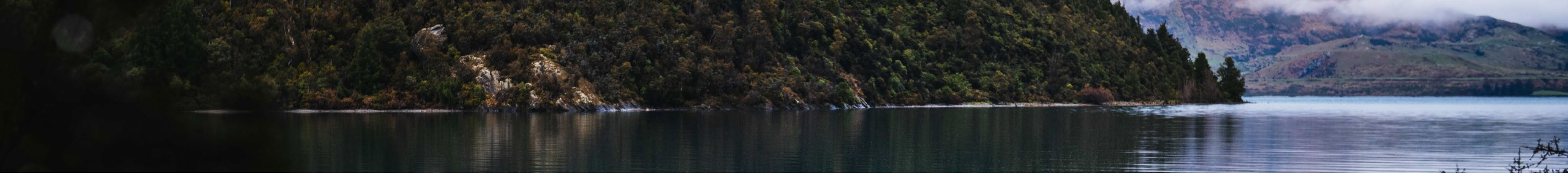
Tom De Pelsemaeker, Otago Regional Council

- What is a regional plan? (Why do we need one & how do we develop one?)
- What are FMUs and Rohe (i.e. Dunstan Rohe)
- What's important to you? (Values and characteristics)
- How can you tell us more? (Demonstration of the survey)



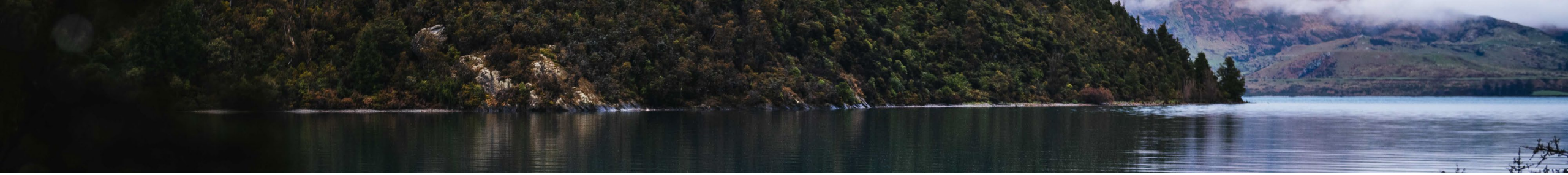
What is a Land and Water Regional Plan?

- Tells us how we manage activities that have an impact on health of our freshwater and land
- Objectives & Policies – outcomes & how to get there
- Rules & Limits – controls on things we can and can't do, tells us when we need resource consent.



Why do we need a new Plan?

- Our current water plan is out-of-date
- Changing expectations
- New challenges and issues
- Need to give effect to new legislation



Te mana o te wai

new fundamental concept & shared responsibility

1st

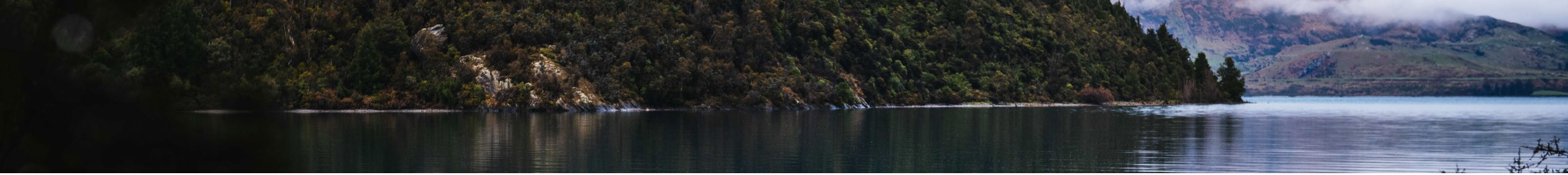
- The health and well-being of **water** bodies and freshwater ecosystems

2nd

- the health needs of **people** (such as drinking water)

3rd

- the ability of people and communities to provide for their **social, economic, and cultural** wellbeing, now and in the future

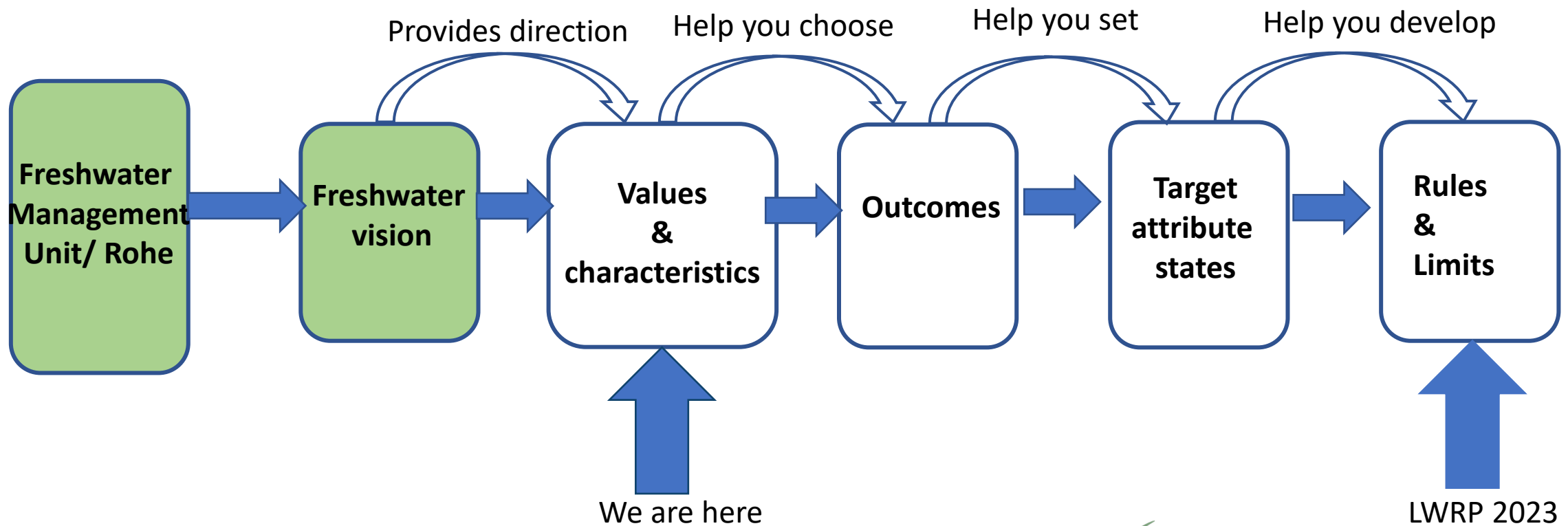


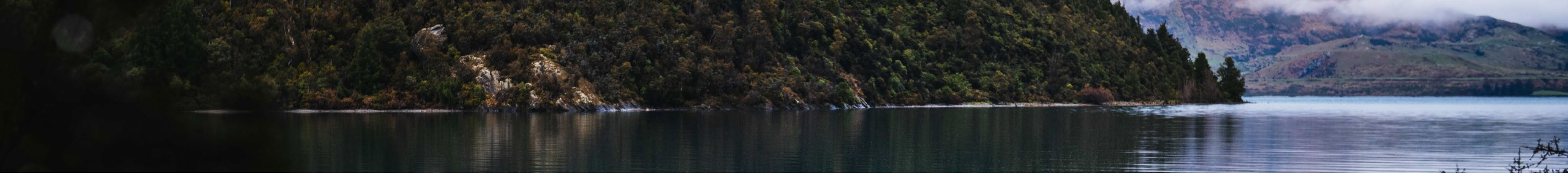
How are we doing this?

- Partnering with iwi
- Building on past consultation
- Collating new and existing technical information (hydrology, ecology, economics)
- Engaging with communities and whanau to better understand what you value and what you want the environment to look like in the future.



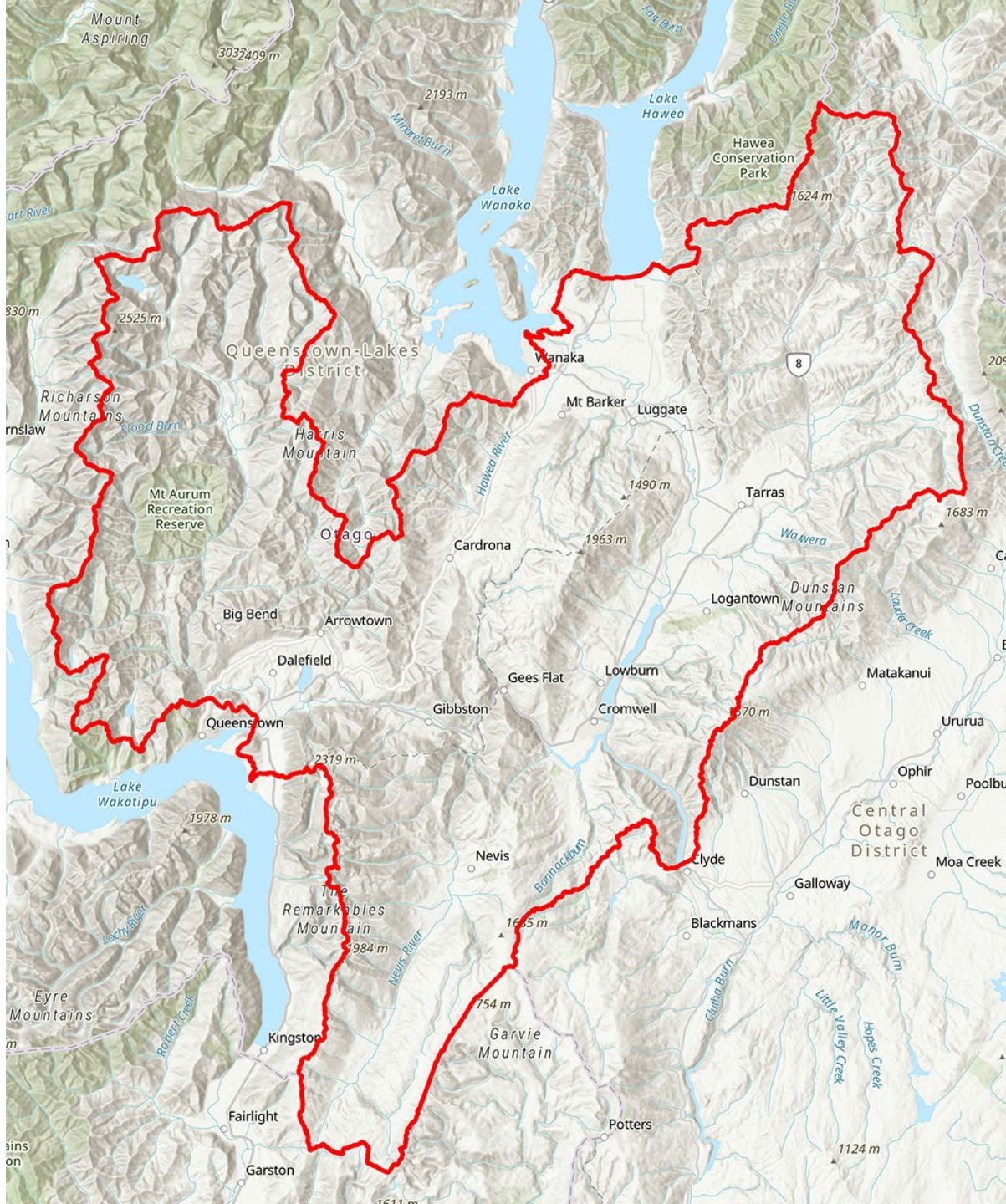
How are we doing this?





FMU/Rohe public meetings and consultation

1. Confirm values and discuss their characteristics (to inform setting environmental outcomes)
2. Present and discuss environment outcomes and management options to achieve outcomes
3. Present a preferred management option
4. Proposed Land and Water Regional Plan out for public submissions



The Dunstan Rohe

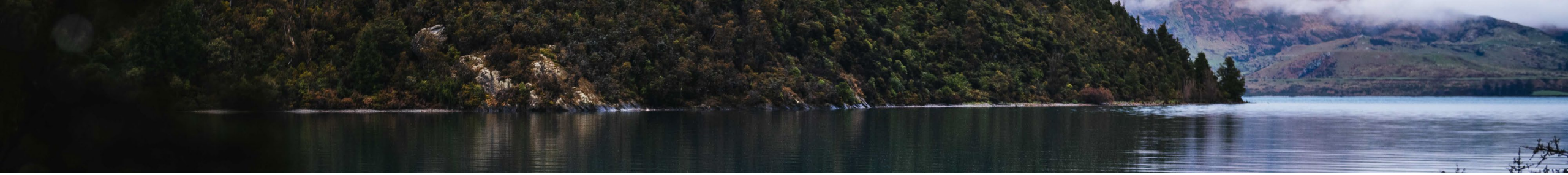




Proposed Dunstan rohe long-term vision

- A single connected system with a pure water source
- Relationship of Kāi Tahu
- Sustain or restore the natural form and function
- Easy migration of indigenous species
- Safe for human contact
- Takes from bigger rivers or groundwater in preference to smaller streams
- Clutha hydro-electricity generation scheme has national significance

2045



Feedback we need from you

Via the online survey (or request a hard copy)

https://yoursay.orc.govt.nz/lwrp2022?tool=map#tool_tab





How can you have a say?

- 1. [Talking us online](#) via Zoom.
- 2. [Completing the online survey](#) about the land and waterways in your area.
- 3. Mark areas of significance on our [online waterways map](#).



Next steps & session wrap up

- We have all your feedback from tonight
- Online survey closes 28 March 2022
- We will be in your area in person in the 2nd half of 2022 to talk about preferred management options
- Keep connected:
 - www.orc.govt.nz
 -
 -
- THANK YOU!

