

AURORA ENERGY LIMITED

PO Box 5140, Dunedin 9058

PH 0800 22 00 05

WEB www.auroraenergy.co.nz



22nd June 2023

Your ref: RM22.434

Submissions
Otago Regional Council
Private Bag 1954
DUNEDIN 9054

SUBMISSION ON COLD GOLD CLUTHA LIMITED RM22.434 – UPPER CLUTHA MATA-AU – FOR THE OPERATION OF A SUCTION DREDGE AND CONSTRUCTION OF A SLIPWAY

This is a submission made by Aurora Energy Limited ("Aurora Energy") on Cold Gold Clutha Limited's resource consent application for the purpose of operating a suction dredge in the Upper Clutha Mata-au and construction of a slipway near Queensberry.

The specific parts of the application/s that this submission relates to are:

This submission relates to the dredging activity which has the potential to adversely affect the operation of electricity distribution infrastructure.

Aurora Energy's submission is as follows:

Aurora's submission is neutral regarding the application in its entirety.

However, Aurora Energy have a number of overhead electricity lines which cross the Clutha-Mata Au at multiple locations within the subject site (**Attachment A**). These lines supply electricity to the Upper Clutha area.

Given the proximity of Aurora's infrastructure over the proposed site, Aurora Energy support the inclusion of the following conditions which are provided in *Appendix 1: Promoted Conditions of Consent (pp.46-49)* of the application for resource consent dated 14th of May 2021.

14. *The total height of the dredge, including any antenna or other fixtures that can articulate and extend vertically above the craft, must be no more than 7.5 metres vertically above the water line.*
15. *The consent holder must ensure no structure comes within 15 metres of any high voltage line.*
16. *Vessels performing work under other electricity lines must maintain a 4 metres minimum approach distance from the conductors as per New Zealand Electrical Code of Practice for Electrical Safe Distances 34.*

We support the inclusion of these conditions to ensure the operation of these electricity lines are not compromised by the proposed activity.

In addition to the above, Aurora Energy seeks the inclusion or variation of the following condition:

- 16(a). *When vessels are performing work within 4 metres of electricity lines, the applicant and/or their contractors are to hold at all times, an active and approved Aurora overhead close approach permit.*

Aurora manages activities which cannot meet the requirements of NZECP 34: 2001 through the Close Approach Permit. All work activity must be kept at least four metres from overhead line conductors. If person(s) need to work closer than 4 metres to Aurora Energy overhead power lines, they need to apply for close approach approval.

Aurora Energy seek the following decision from the consent authority:

If the consent authority are minded to grant the application, Aurora Energy seek the inclusion of the above conditions from the consent authority.

Provided the conditions above are included in the consent decision, we **do not** wish to be heard in support of our submission.

Aurora Energy **are not** a trade competitor* of the applicant.

We **do not** wish to be involved in any pre-hearing meeting that may be held for this application.

Aurora have served a copy of this submission to the applicant.

Yours sincerely

Catherine Morris

Resource Planning Intern

Address for Service of Submitter

Aurora Energy Limited

10 Halsey St

DUNEDIN 9016

Contact Details of Submitter

Catherine Morris

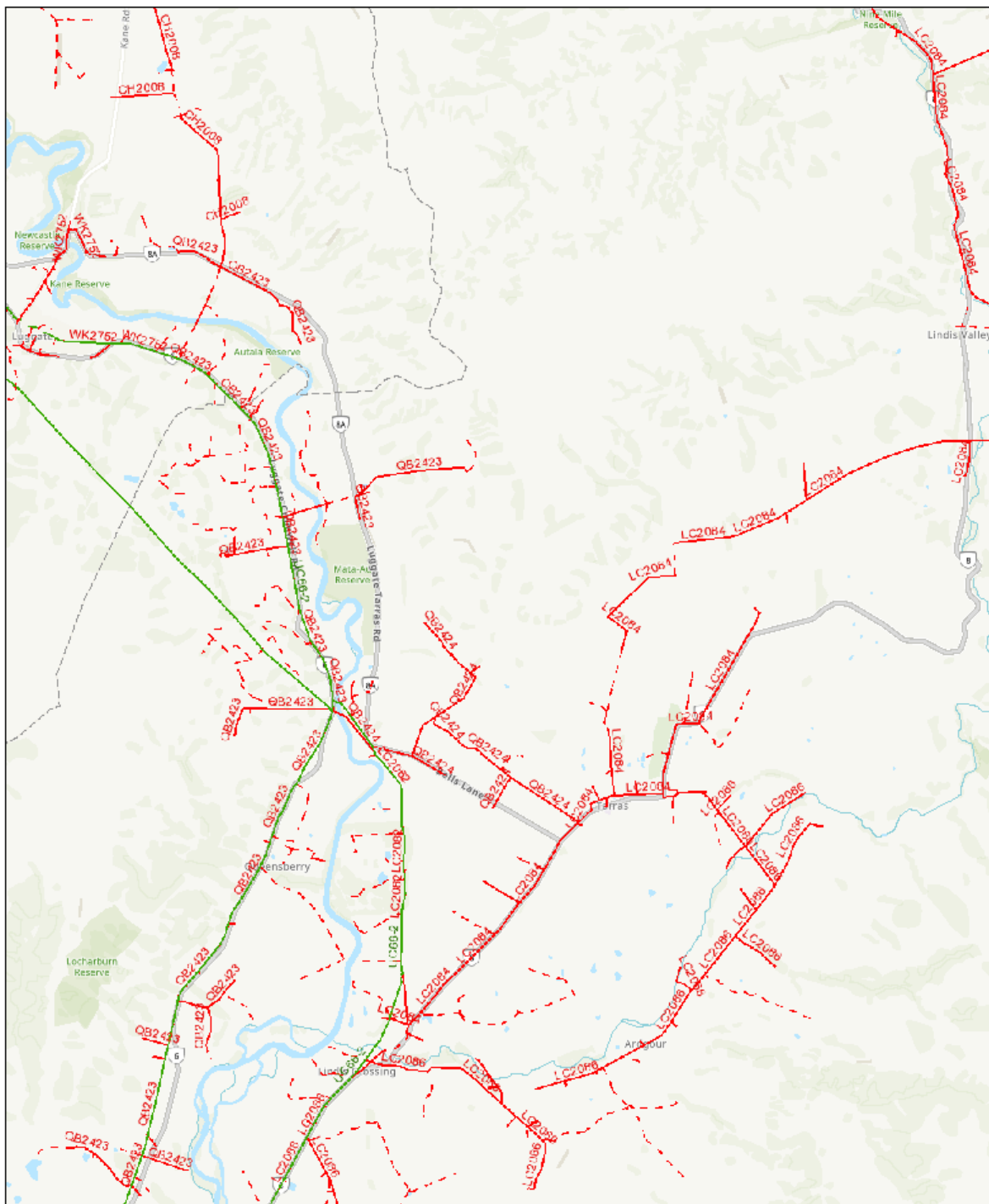
Resource Planning Intern

[REDACTED]

[REDACTED]

Attachment A

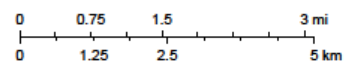
Aurora Overhead Lines Crossing Upper Clutha Mata-Au



6/22/2023, 10:32:59 AM

- UndergroundCableHV
- UndergroundCableEHV
- OverheadLineHV
- OverheadLineEHV

1:72,224



Eagle Technology, LINZ, StatsNZ, NIWA, Natural Earth, © OpenStreetMap contributors, Aurora Energy Ltd

DISCLAIMER: While reasonable measures have been taken to ensure the accuracy of the information contained in this plan Aurora Energy shall not have any liability whatsoever in relation to any loss, damage, cost or