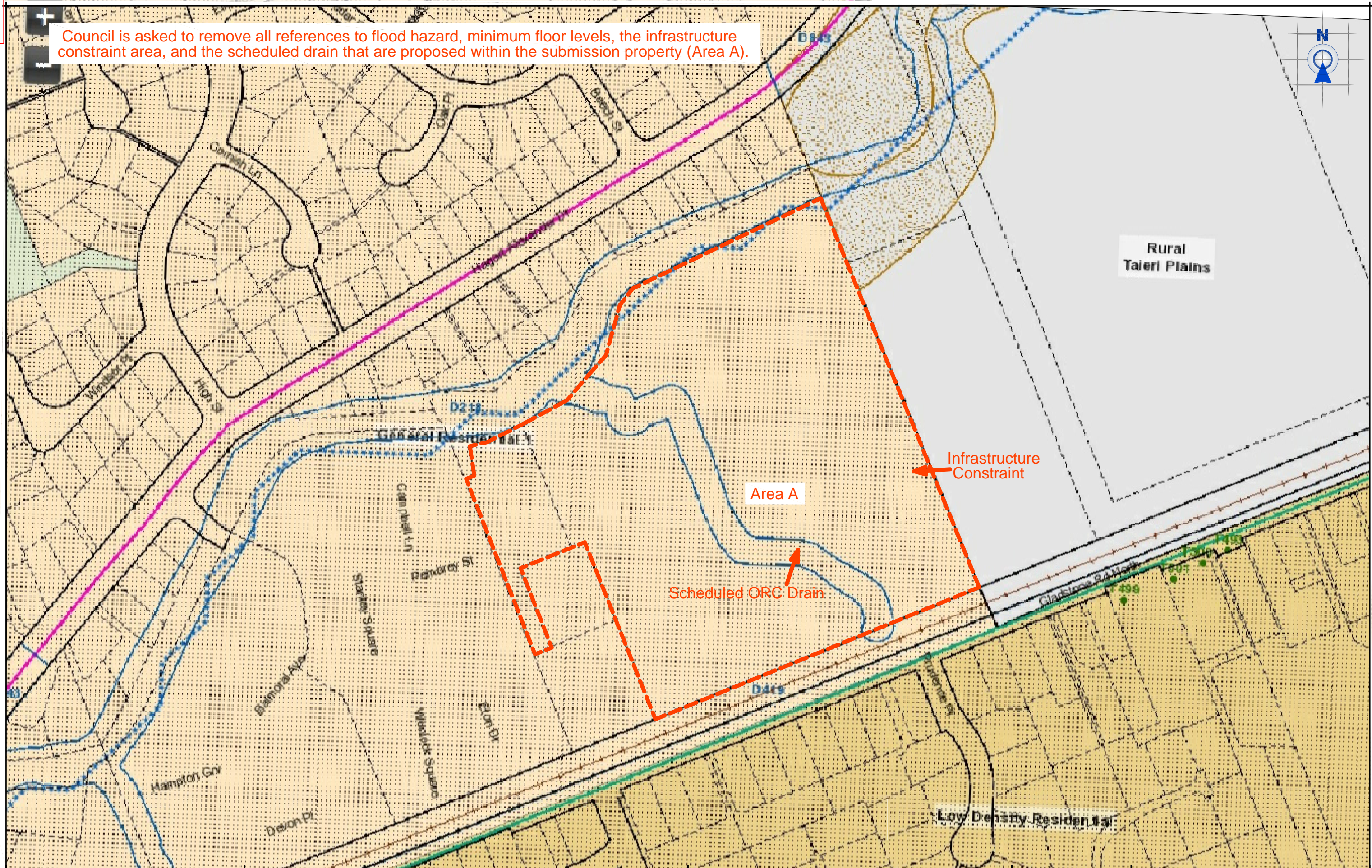


Council is asked to remove all references to flood hazard, minimum floor levels, the infrastructure constraint area, and the scheduled drain that are proposed within the submission property (Area A).



PATERSONPITTSGROUP
Surveying • Planning • Engineering
Your Land Professionals
www.ppgroup.co.nz
0800 PPGROUP

DUNEDIN:
229 Moray Place,
PO Box 5933,
Dunedin 9058.
T 03 477 3245
F 03 474 0484
E dunedin@ppgroup.co.nz

Client/Location:
Owhiro River Ltd
67A and 71 Gladstone Road North

Purpose/Drawing Title:
**Proposed Zone Adjustment
to Support 2GP Submission
Infrastructure Constraint and Sched. Drain**

© COPYRIGHT. This drawing, content and design remains the property of Paterson Pitts Partners Limited and may not be reproduced in part or full or altered without the written permission of Paterson Pitts Partners Limited. This drawing and its content shall only be used for the purpose for which it is intended. No liability shall be accepted by Paterson Pitts Partners Limited for its unauthorized use.

Surveyed by:		Original Size:	Scale:
Designed by:		A3	DO NOT SCALE
Drawn by:			
Checked by:		Sheet No:	Revision No:
Approved by:			Date Created:
Job Ref:			