

# **Proposed Plan Change 3C (Waiwera catchment minimum flow)**

## **Regional Plan: Water for Otago**

### **Incorporating Decisions of Council**

*Note: Changes shown in this document compare all recommended changes to the Operative Water Plan, with additions underlined and deletions ~~struckout~~*

**ISBN 978-0-908324-16-3**

## Introduction

The Otago Regional Council has prepared Proposed Plan Change 3C (Waiwera catchment minimum flow) to the Regional Plan: Water for Otago. It proposes to establish minimum flows, allocation limits, and monitoring sites for the Waiwera River.

This document should be read in conjunction with:

- Section 32 Evaluation Report; and
- Section 32AA Further Evaluation Report
- The Regional Plan: Water for Otago operative as at 1 May 2014 (the base document\*).

-----

## Table of Contents

<b>Policy 6.4.5 (page 6-21 of Plan*)</b> .....	<b>2</b>
<b>Rule 12.1.4.2 (page 12-7 of Plan)</b> .....	<b>4</b>
<b>Schedule 2: Schedule of specified restrictions on the exercise of permits to take surface water (page 20-58 of Plan)</b> .....	<b>6</b>
<b>Minor and consequential changes</b> .....	<b>7</b>
<b>Maps: (Maps B13, B15 for) Waiwera River</b> .....	<b>8</b>

\* *Regional Plan: Water for Otago operative as at 1 May 2014*\*\*.

-----

\*\* Note that Plan Change 3B (Pomahaka catchment minimum flow) has been made operative from 1 June 2015, and is shown incorporated here as if it is part of the Water Plan base document.

# 6

## Water Quantity



...

## **6.4 Policies applying to the management of the taking of water**

*[Index... – Policy 6.4.4 unchanged]*

**6.4.5 The minimum flows established by Policies 6.4.3, 6.4.4, 6.4.6, 6.4.9 and 6.4.10 will apply to resource consents for the taking of water, as follows:**

- (a) In the case of new takes applied for after 28 February 1998, upon granting of the consent; and**
- (b) In the case of any resource consent to take water from within the Taieri above Paerau and between Sutton and Outram, Welcome Creek, Shag, Kakanui, Water of Leith, Lake Hayes, Waitahuna, Trotters, Waianakarua, Pomahaka, Waiwera and Lake Tuakitoto catchment areas as defined in Schedule 2A, subject to the review of consent conditions under Sections 128 to 132 of the Resource Management Act; and**
- (c) ...**

# 12

## Rules: Water Take, Use and Management



...

## **12.1 The taking and use of surface water**

*[12.1.1 - 12.1.4.1 unchanged]*

- 12.1.4.2 Taking and use of surface water as primary allocation in the following Schedule 2A catchment areas, shown on the B-series maps:
- Kakanui,
  - Lake Hayes,
  - Lake Tuakitoto,
  - Pomahaka,
  - Shag,
  - Taieri Catchment upstream of Paerau,
  - Taieri Catchment Sutton to Outram,
  - Trotters,
  - Waianakarua,
  - Waitahuna,
  - Waiwera,
  - Water of Leith, and
  - Welcome Creek:

...

# 20

## Schedules



SCHEDULE 2: SPECIFIED RESTRICTIONS ON THE EXERCISE OF PERMITS TO TAKE WATER

...

**2 Schedule of specified restrictions on the exercise of permits to take surface water**

...

**2A Schedule of specific minimum flows for primary allocation takes in accordance with Policy 6.4.3, and primary allocation limits in accordance with Policies 6.4.2(a) and 6.4.1A**

The following schedule:

...

Catchment See the B-series maps	Monitoring Site (with MS number) See the B-series maps	Minimum flow (litres per second – instantaneous flow)	Primary Allocation Limits in accord with Policy 6.4.2(a) (litres per second – instantaneous flow)
<u>Waiwera catchment</u>	<u>Maws Farm (MS 16)</u>	<u>300 (1 October to 30 April)</u> <u>400 (1 May to 30 September)</u>	<u>150</u> <u>Waiwera catchment from confluence with Clutha/Mata-Au to headwaters</u>

...

**2B Schedule of supplementary allocation blocks and specific minimum flows in accordance with Policy 6.4.9(c)**

Catchment (See the B-series maps) & Supplementary Block Number	Minimum Flow (litres per second – instantaneous flow) at the monitoring site(s) (See the B-series maps)	Supplementary Allocation Block (litres per second – instantaneous flow)
<u>Waiwera catchment (first supplementary allocation block)</u>	<u>500</u> <u>At Maws Farm (MS 16)</u>	<u>100</u>

...



**Table of minor and consequential changes**

Plan Provision	Detail of proposed change								
Page numbers	Update page numbers.								
Footers	Change footer to read “ <u>Regional Plan: Water for Otago (Updated to &lt;date to be inserted&gt;)</u> ”.								
Title page	Change the date to read “ <u>Updated to &lt;date to be inserted&gt;</u> ”.								
ISBN number	Obtain new ISBN numbers for Regional Plan: Water for Otago, if necessary.								
Chronicle of key events	<p>Add the following to the end of the table:</p> <table border="1" style="width: 100%; border-collapse: collapse;"> <thead> <tr> <th style="background-color: #d9d9d9;">Key event</th> <th style="background-color: #d9d9d9;">Date notified</th> <th style="background-color: #d9d9d9;">Date decisions released</th> <th style="background-color: #d9d9d9;">Date operative</th> </tr> </thead> <tbody> <tr> <td><u>Plan Change 3C (Waiwera catchment minimum flow) to the Regional Plan: Water</u></td> <td><u>13 December 2014</u></td> <td><u>8 August 2015</u></td> <td><i>&lt;Date to be inserted&gt;</i></td> </tr> </tbody> </table>	Key event	Date notified	Date decisions released	Date operative	<u>Plan Change 3C (Waiwera catchment minimum flow) to the Regional Plan: Water</u>	<u>13 December 2014</u>	<u>8 August 2015</u>	<i>&lt;Date to be inserted&gt;</i>
Key event	Date notified	Date decisions released	Date operative						
<u>Plan Change 3C (Waiwera catchment minimum flow) to the Regional Plan: Water</u>	<u>13 December 2014</u>	<u>8 August 2015</u>	<i>&lt;Date to be inserted&gt;</i>						
section 1.4	<p>...</p> <p>Proposed Plan Change 6A...</p> <p><u>Proposed Plan Change 3C (Waiwera catchment minimum flow) was notified on 13 December 2014 to introduce a minimum flow and allocation regime with monitoring site for the Waiwera catchment. A total of six submissions and two further submissions were received. Following the hearing, decisions on submissions received were released on 8 August 2015. Plan Change 3C was made operative on ...</u></p> <p>...</p>								
Tables of contents [ <i>on pages viii and 20-2</i> ]	Update page numbers, if necessary.								
Map Index (section B)	Update section B maps and Index, as a consequence of the plan change.								

M A P S

**Maps: Maps B13 and B15 showing Waiwera catchment and proposed minimum flow site at Maws Farm (MS 16)**

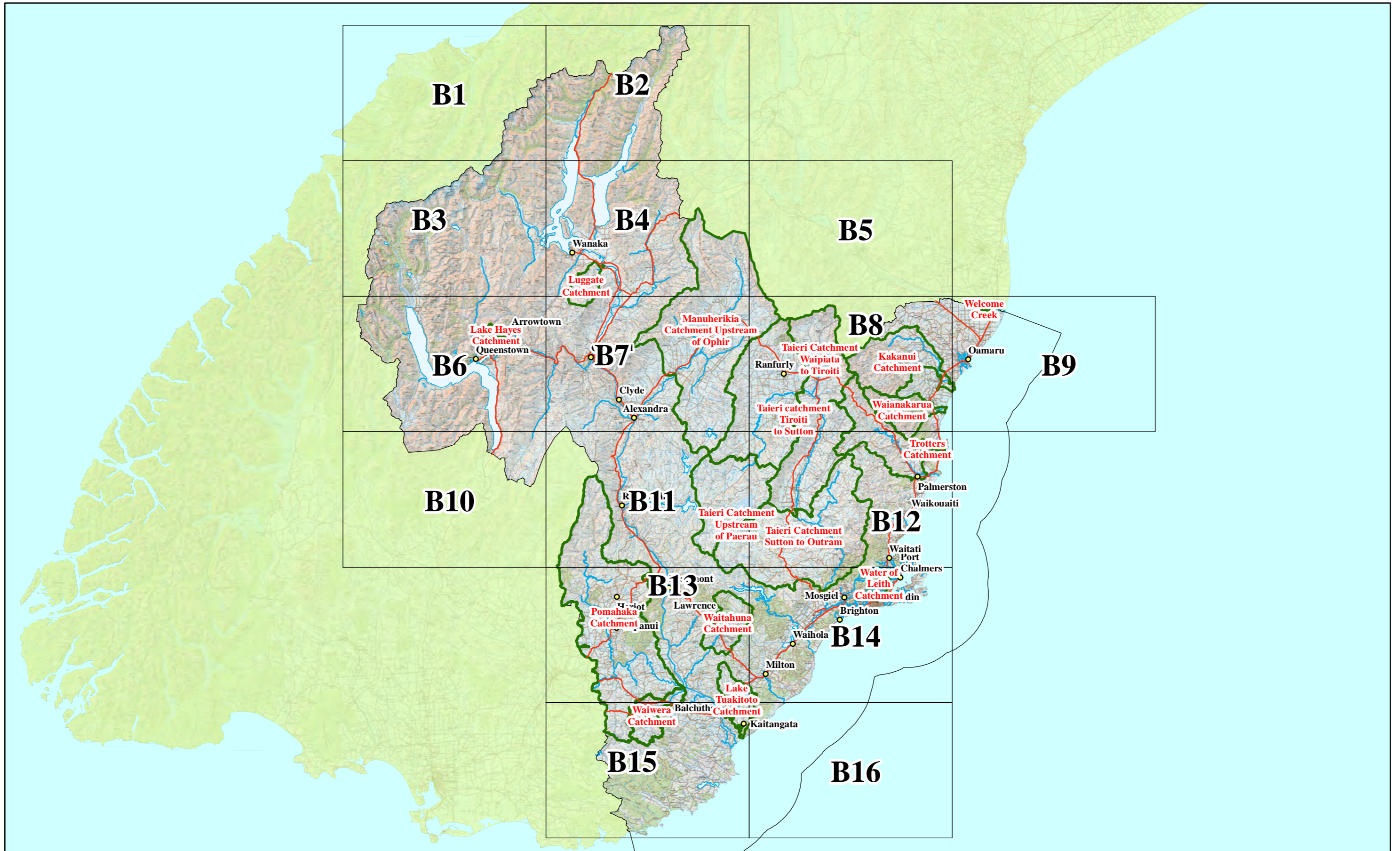
*Maps, which use the numbering introduced by Plan Change 3B (Pomahaka catchment minimum flow), are attached as follows:*

Map B - Index: Minimum Flow Catchment Boundaries and Monitoring Sites

**B13**

**B15**





**Key**

- Towns
- State Highway
- Regional Boundary

Sourced from LINZ data, Crown Copyright reserved.

# Map B - Index

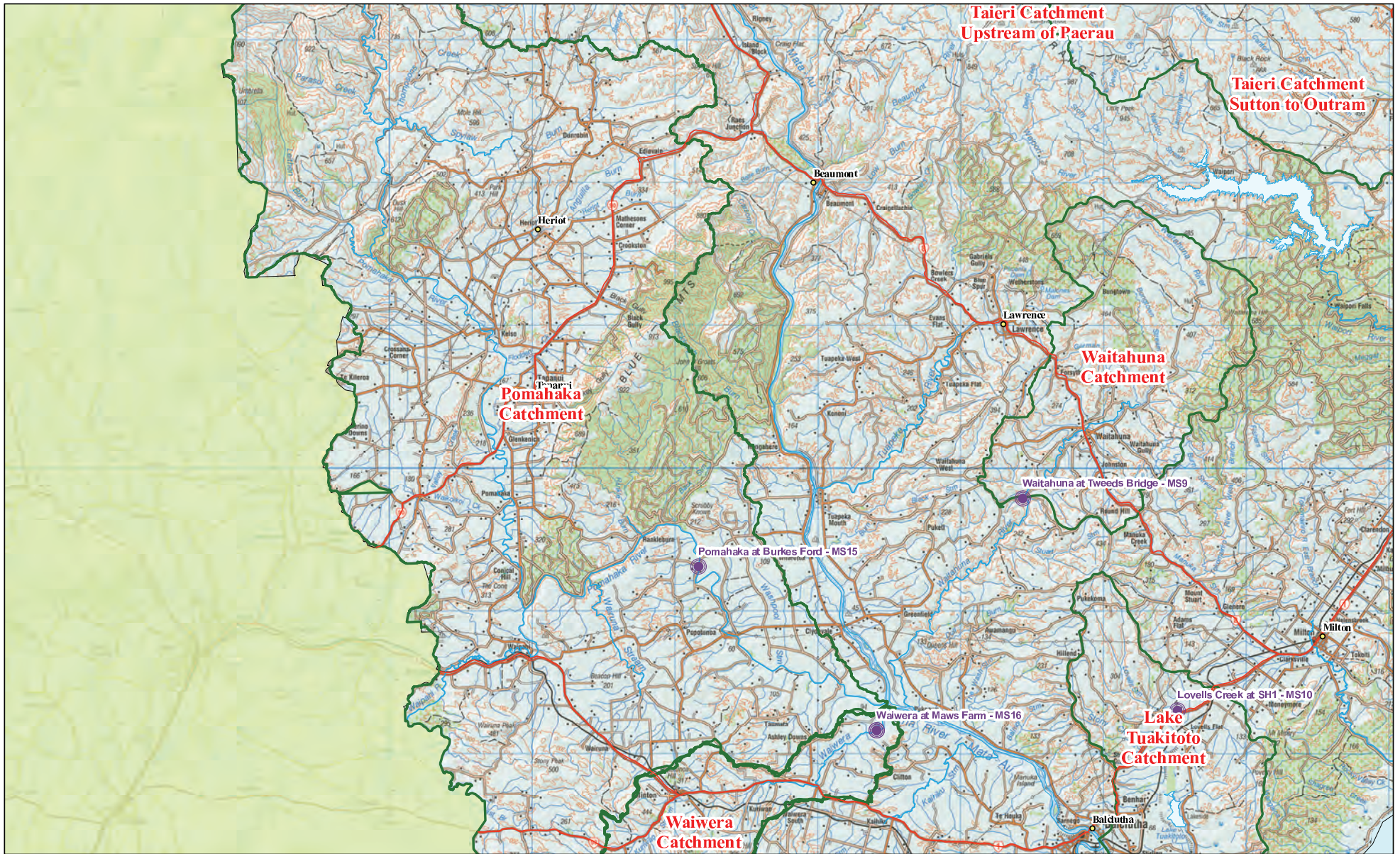
## Minimum Flow Catchment Boundaries and Monitoring Sites

Basemap: Land Information New Zealand Topo50 Maps

*Proposed Plan Change 3B  
(Pomahaka catchment minimum flow),  
16 August 2014*







Base map: Land Information New Zealand Topo50 Maps

B1	B2	<b>Key</b> MinFlowMonitoringSites Catchment Boundary Otago Regional Boundary
B3	B4	
B6	B7	
B10	B11	
B13	B14	
B15	B16	

Sourced from LINZ data, Crown Copyright reserved.

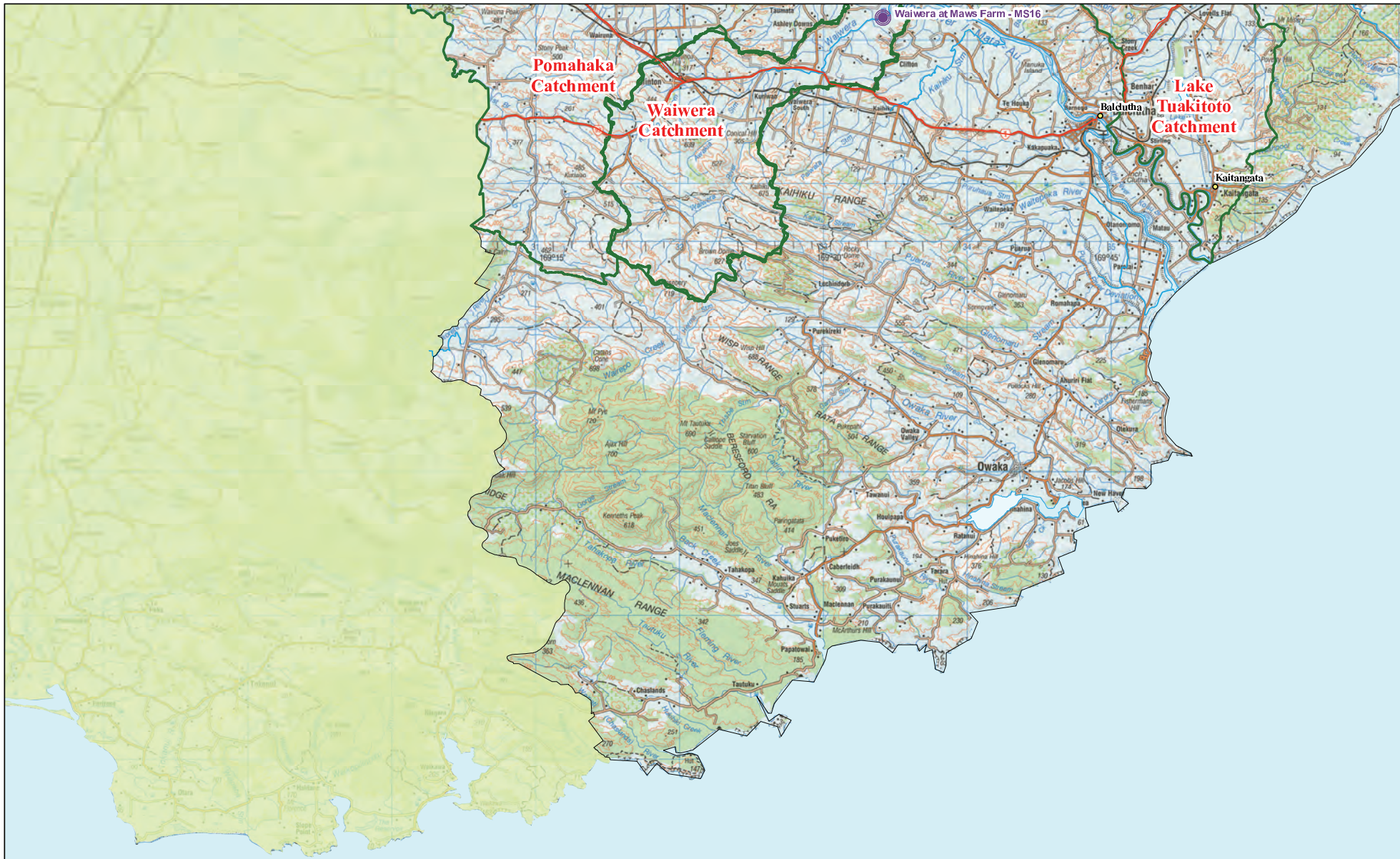
# Minimum Flow Catchment Boundaries and Monitoring Sites

## Map B13

Proposed Plan Change 3B  
 (Pomahaka catchment minimum flow),  
 16 August 2014







Base map: Land Information New Zealand Topo50 Maps

B1	B2	<b>Key</b> MinFlowMonitoringSites Catchment Boundary Otago Regional Boundary
B3	B4 B5	
B6	B7 B8 B9	
B10	B11 B12	
B13	B14	
B15	B16	

Sourced from LINZ data, Crown Copyright reserved.

# Minimum Flow Catchment Boundaries and Monitoring Sites

## Map B15

Proposed Plan Change 3B  
 (Pomahaka catchment minimum flow),  
 16 August 2014

