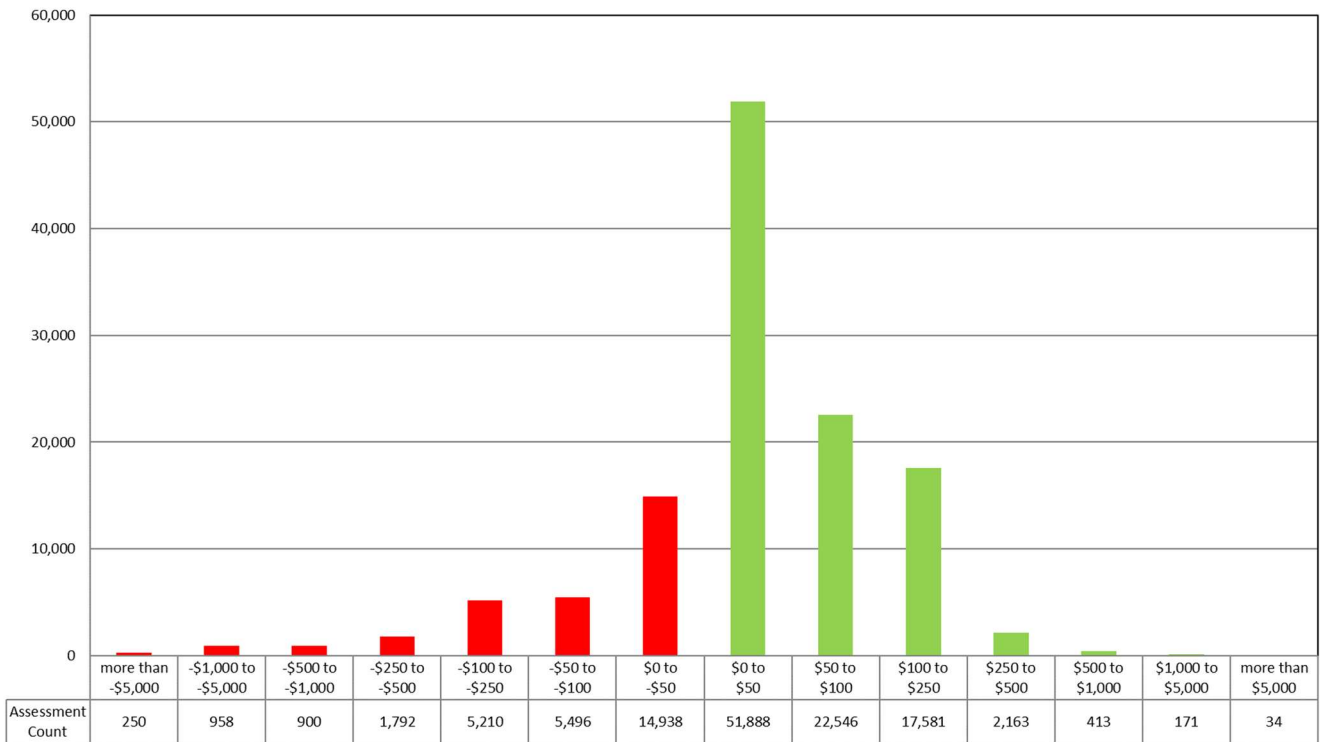
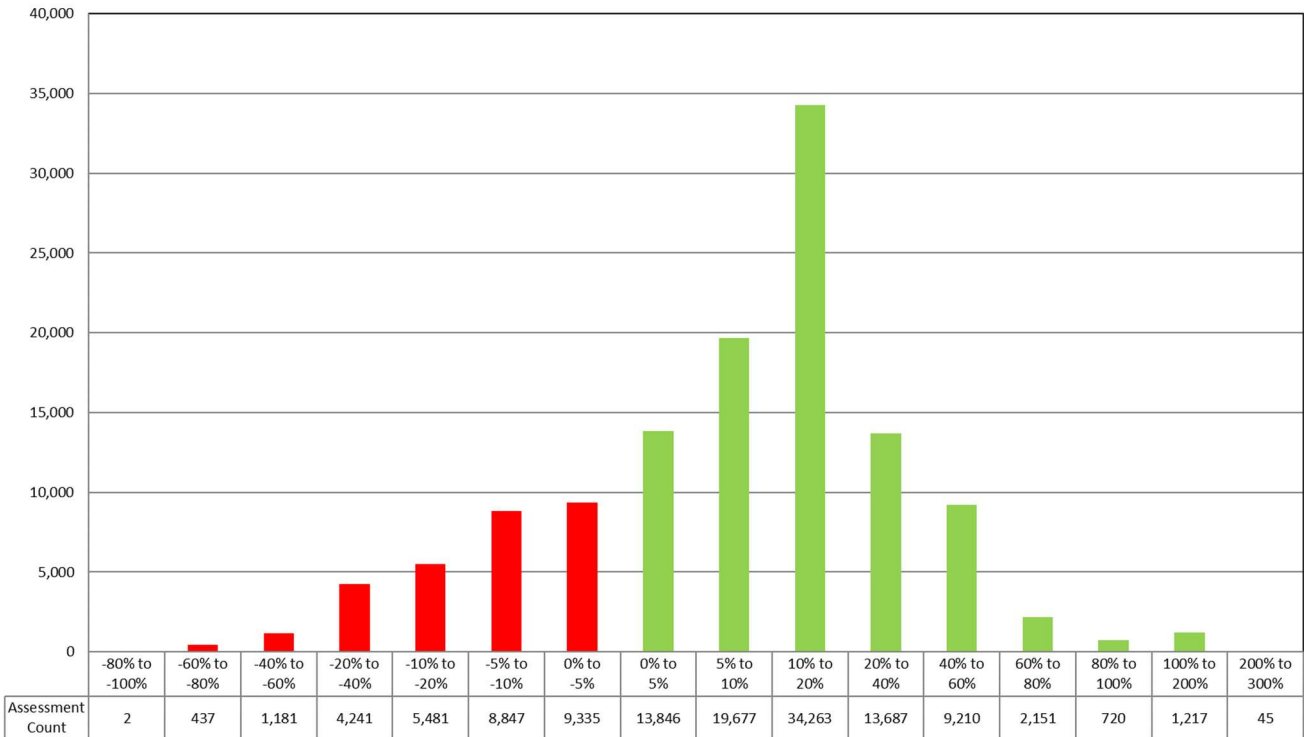


Sensitivity Analysis - Current Policy to Proposed Policy

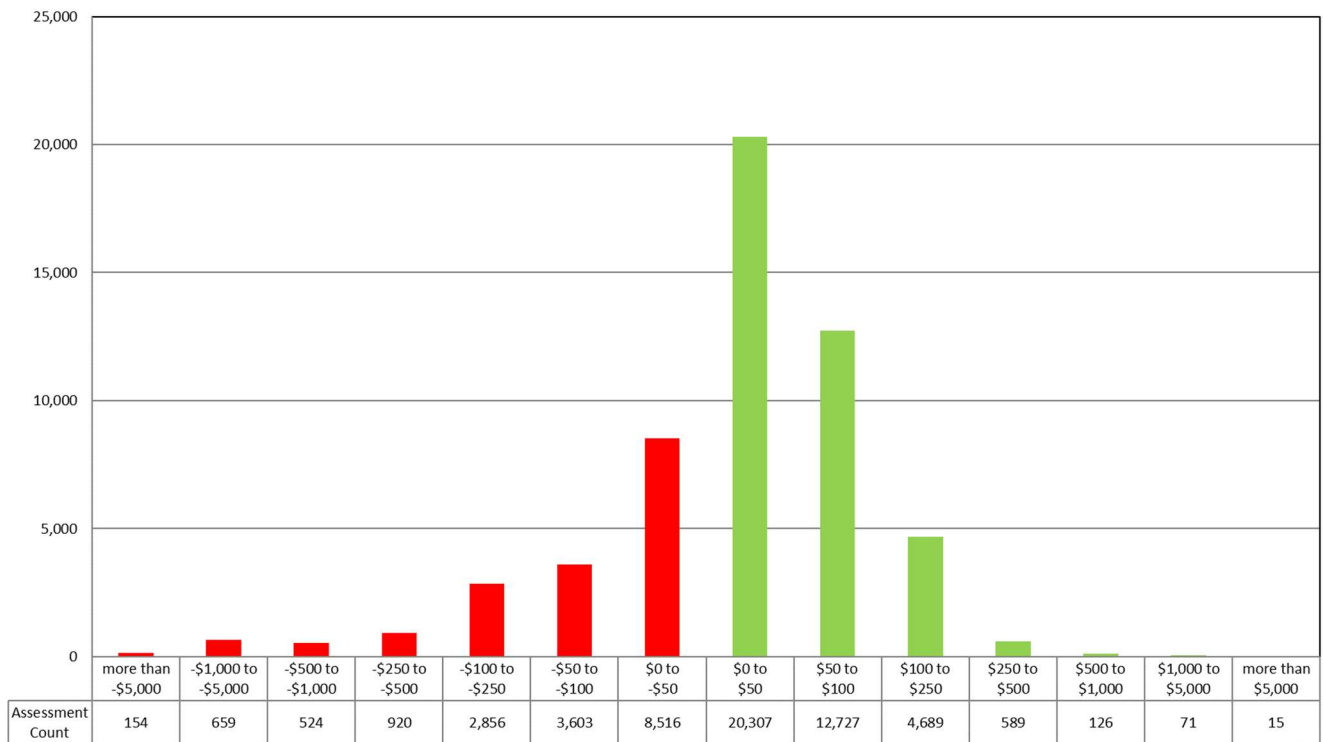
All Otago – \$



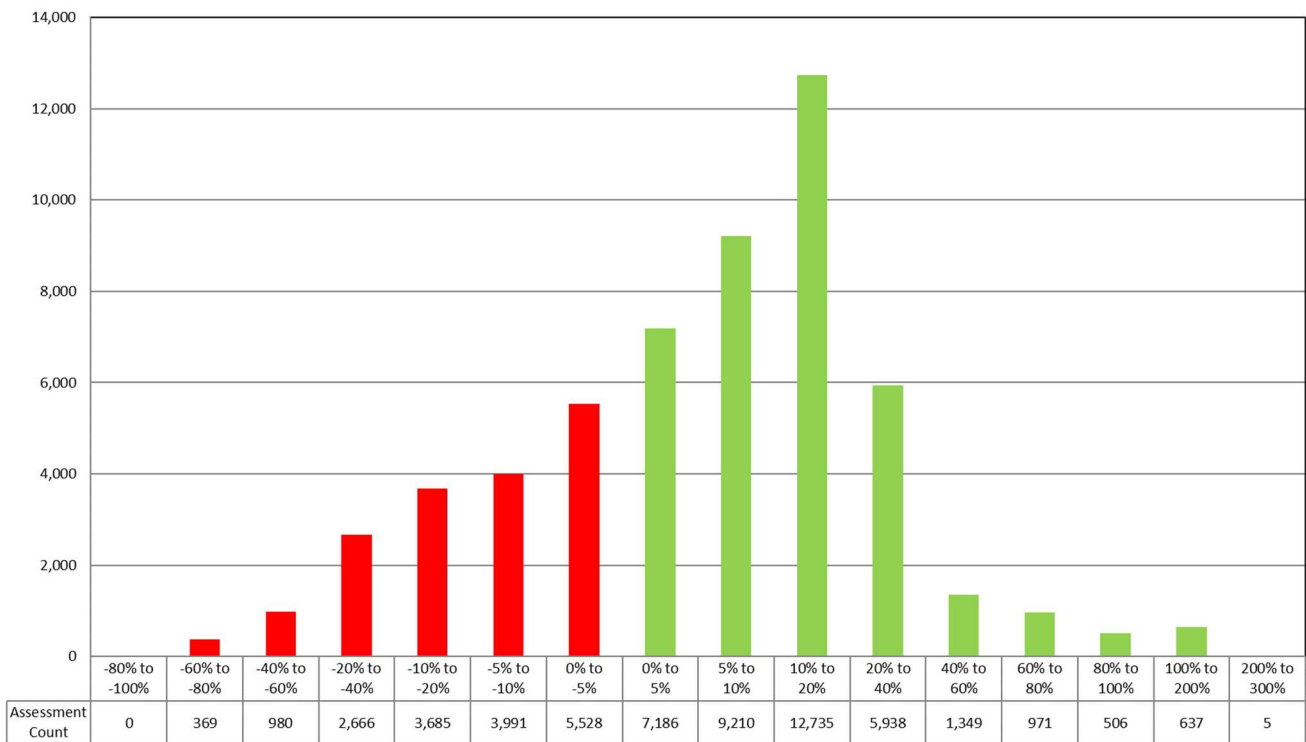
All Otago – %



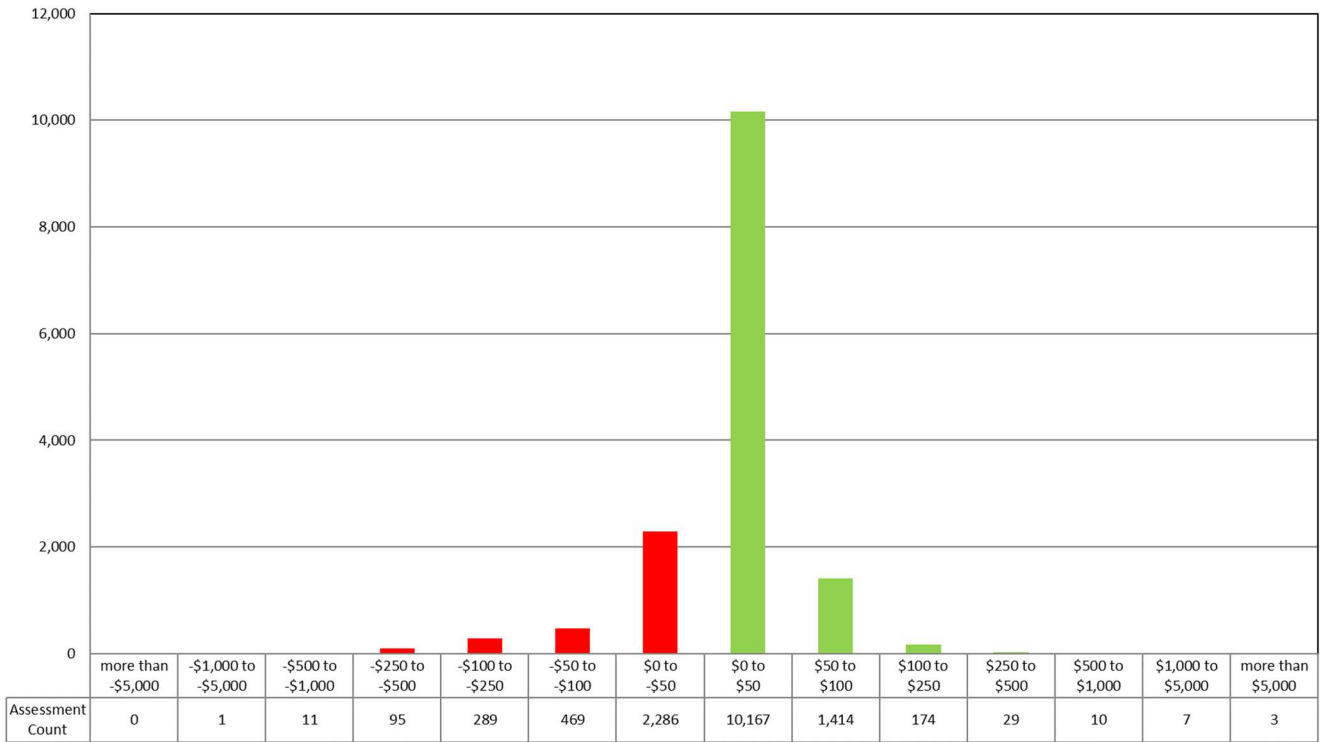
Dunedin – \$



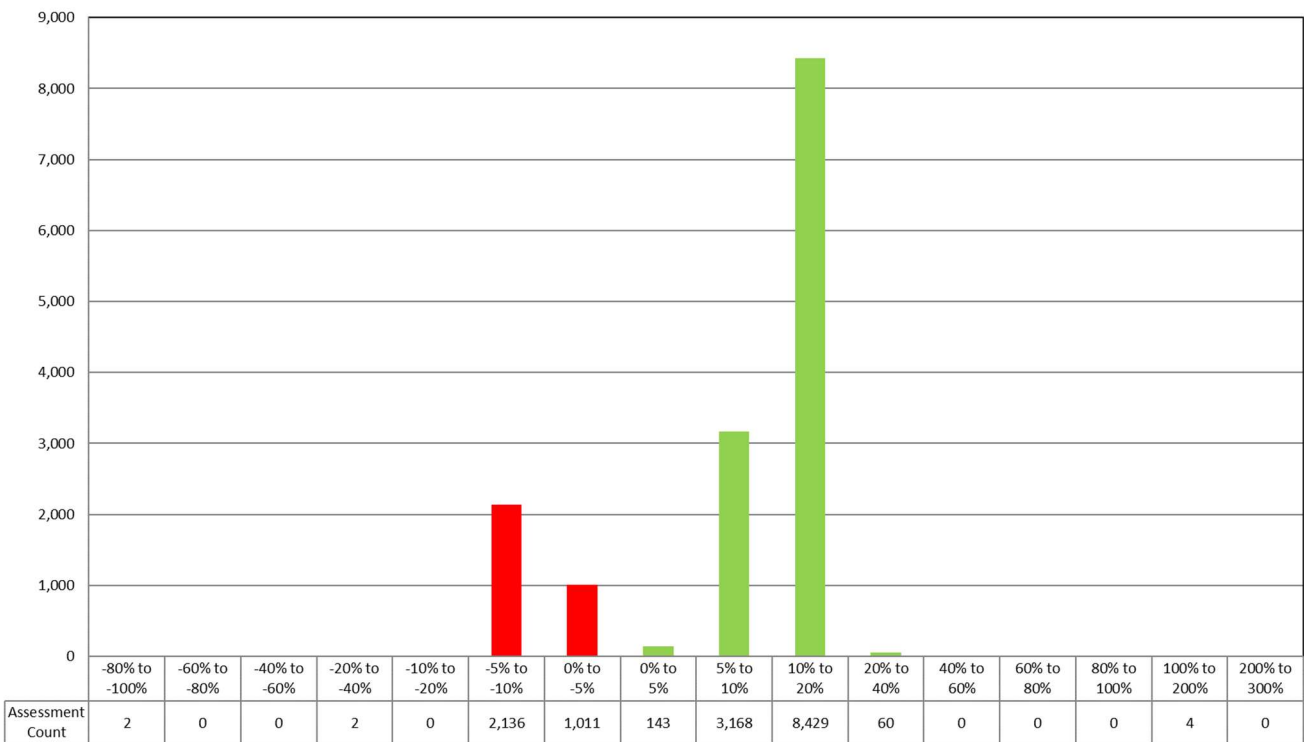
Dunedin – %



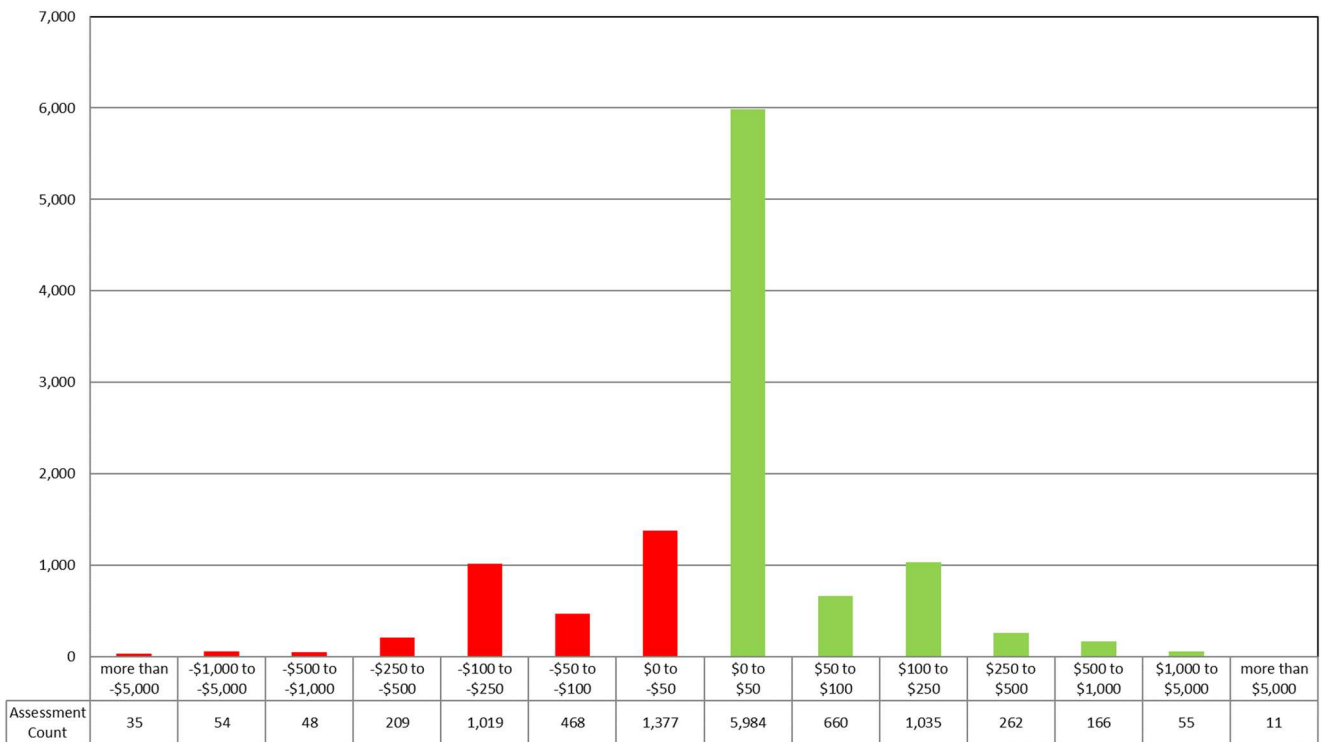
Central Otago – \$



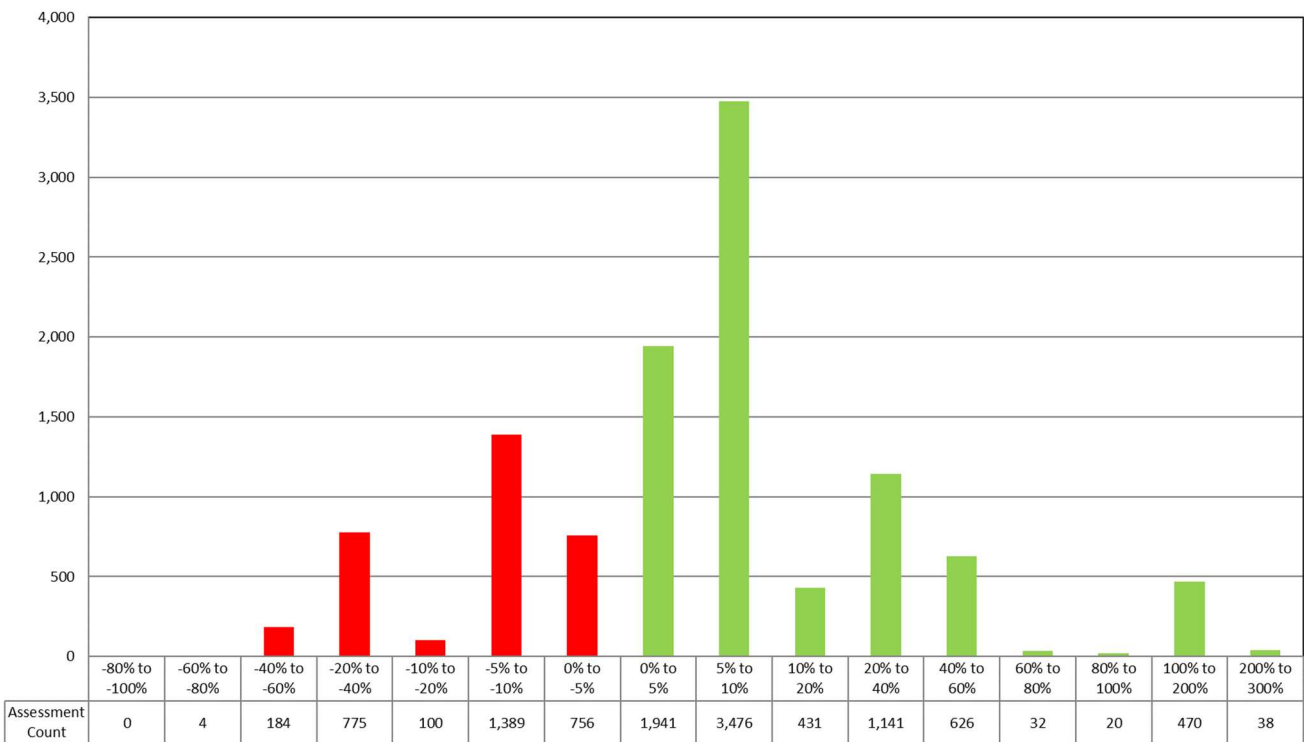
Central Otago – %



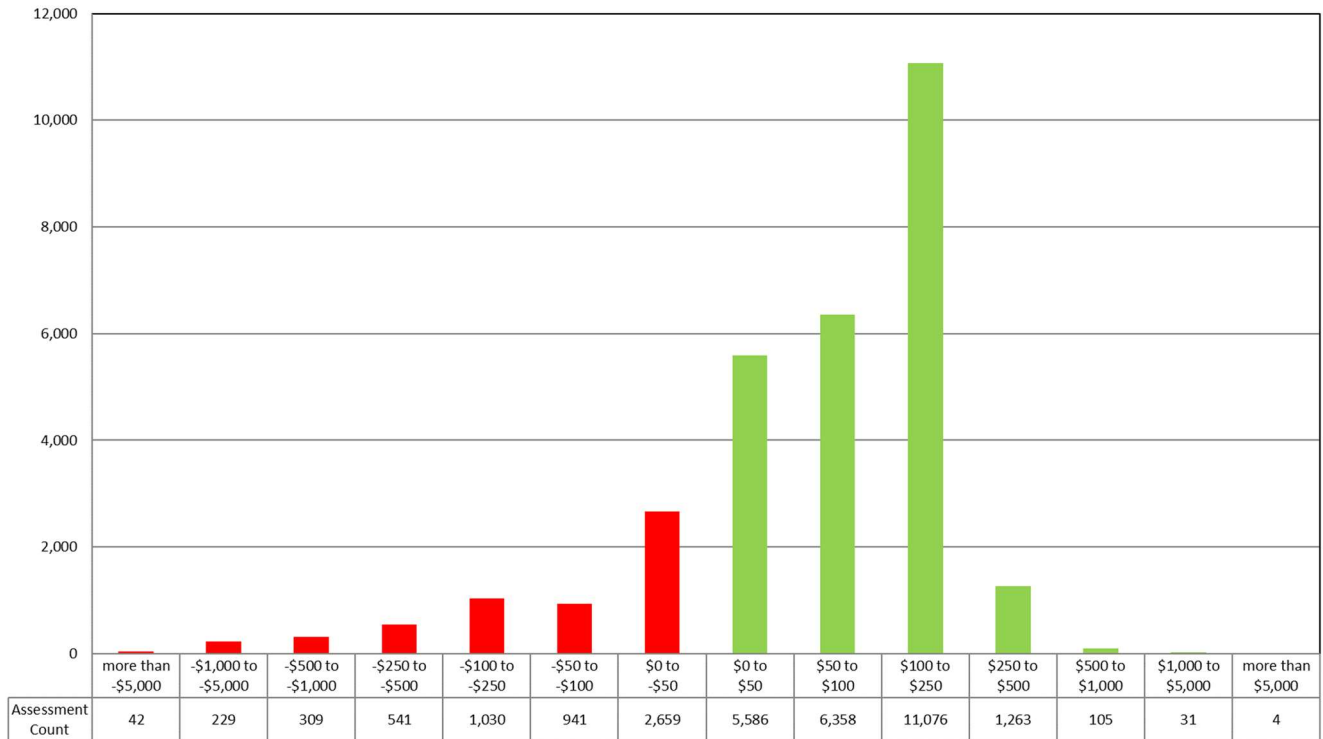
Clutha – \$



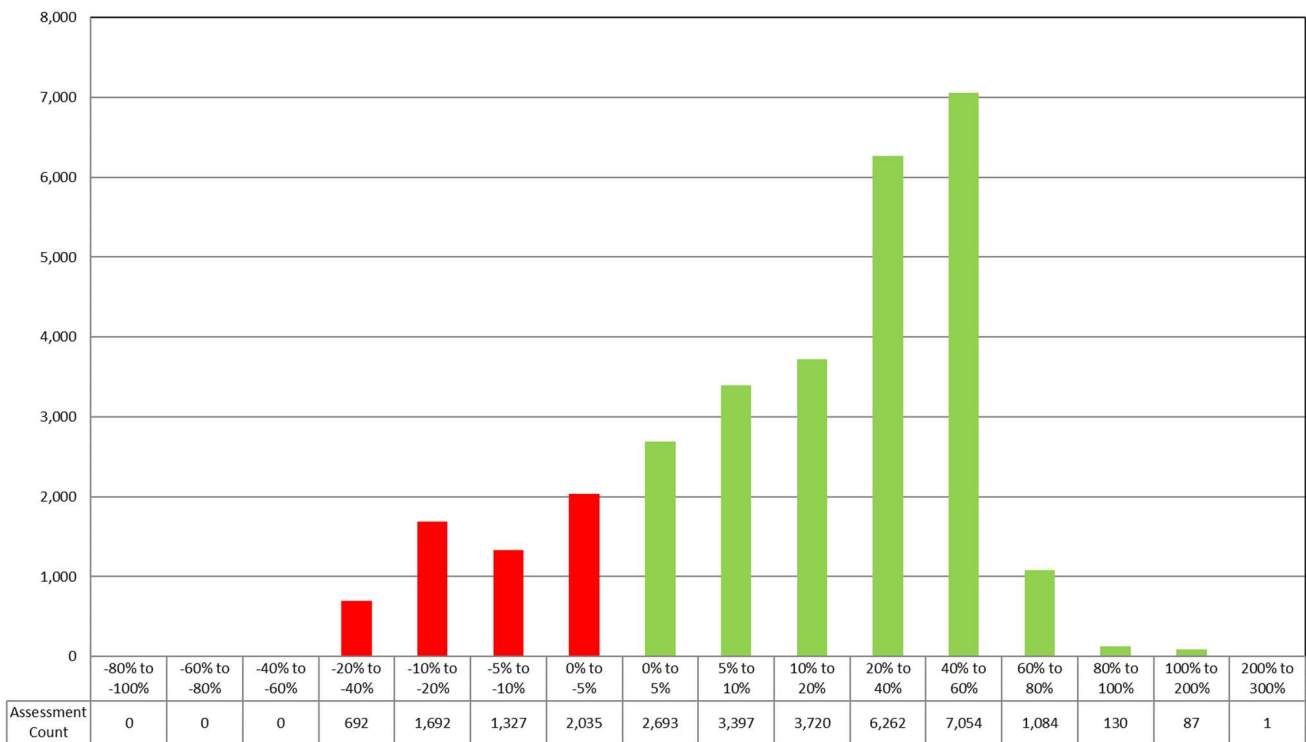
Clutha – %



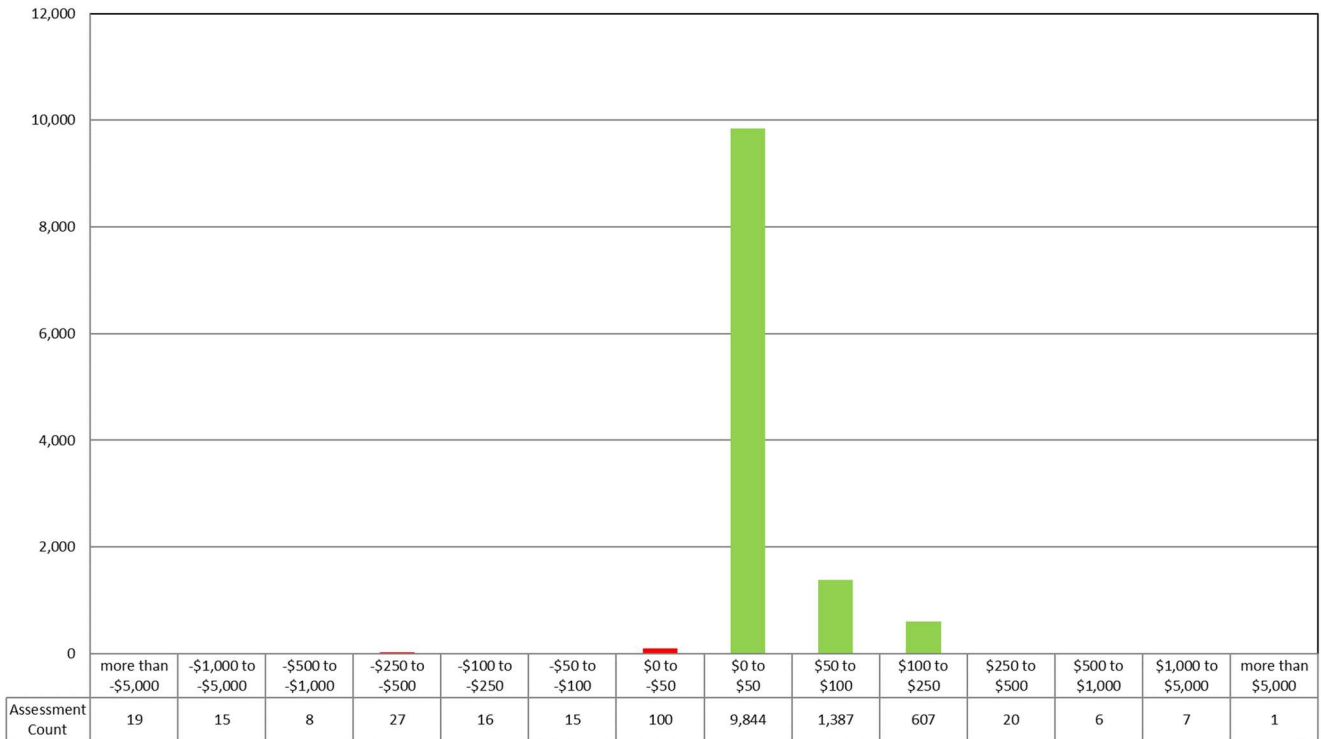
Queenstown – \$



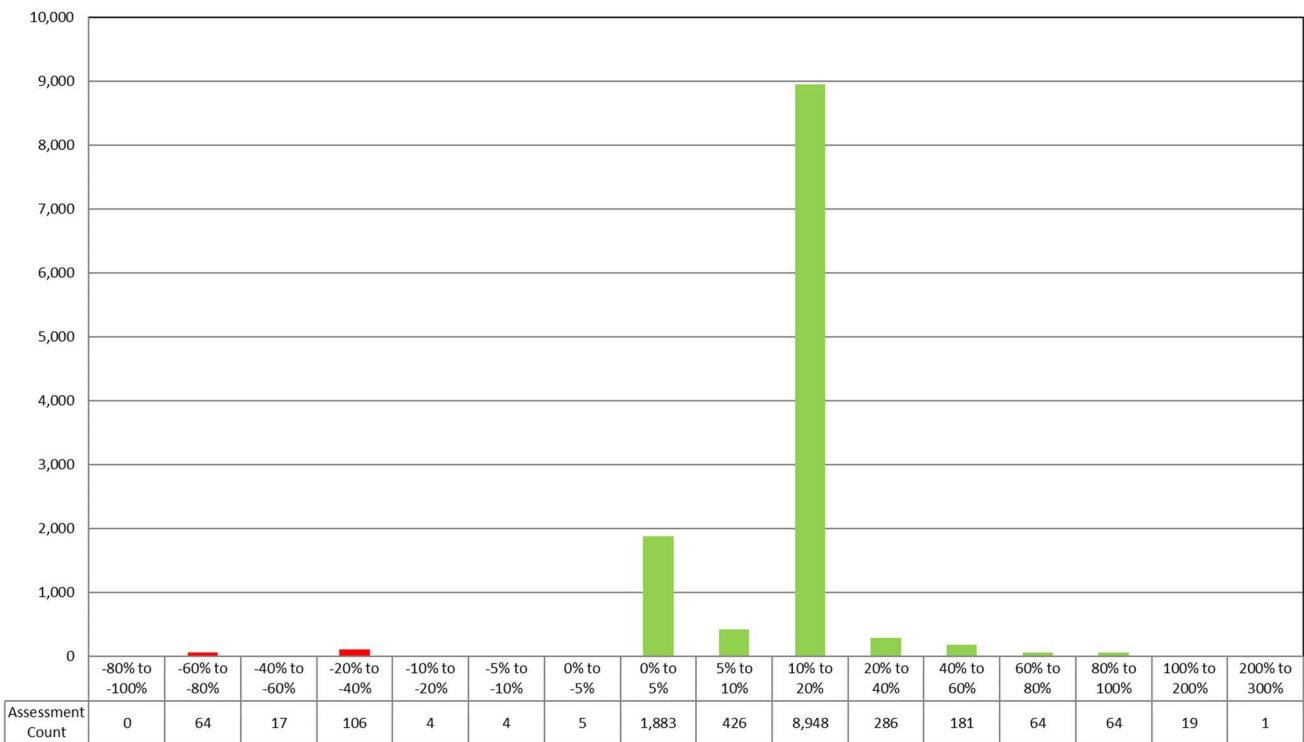
Queenstown – %



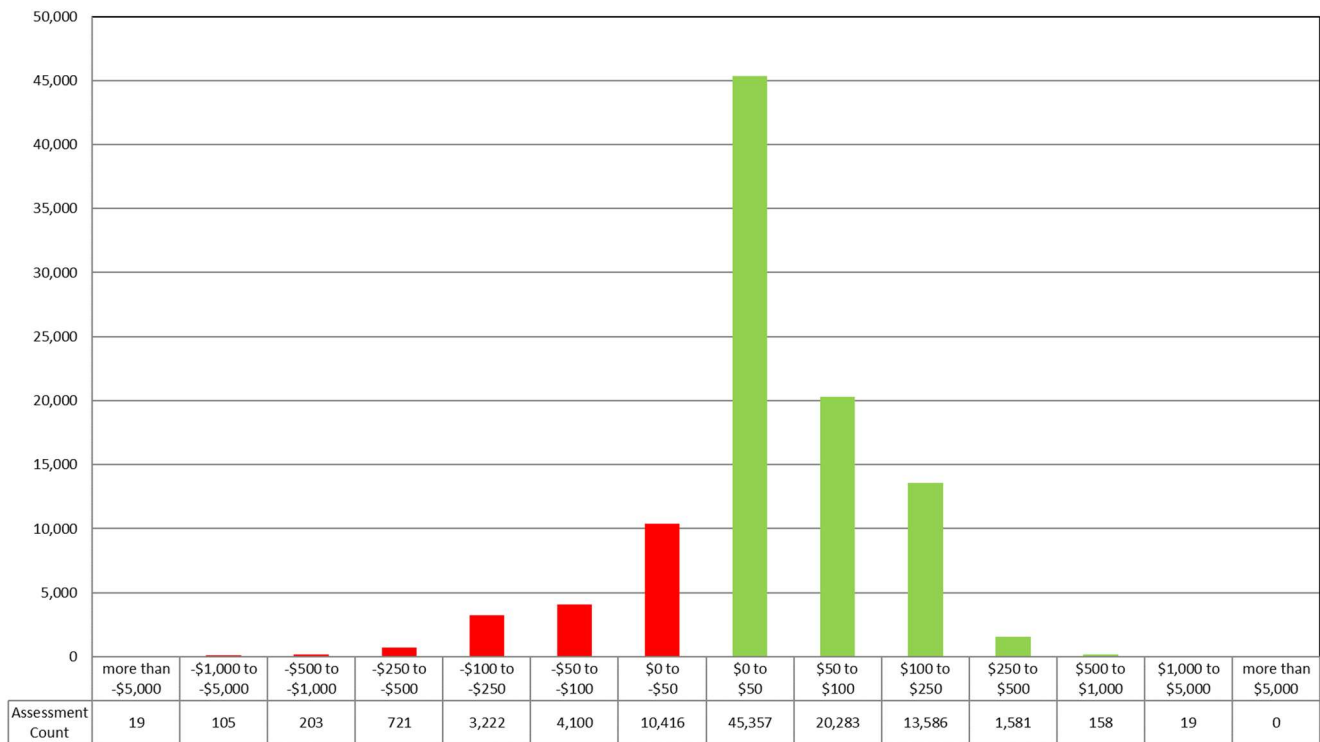
Waitaki – \$



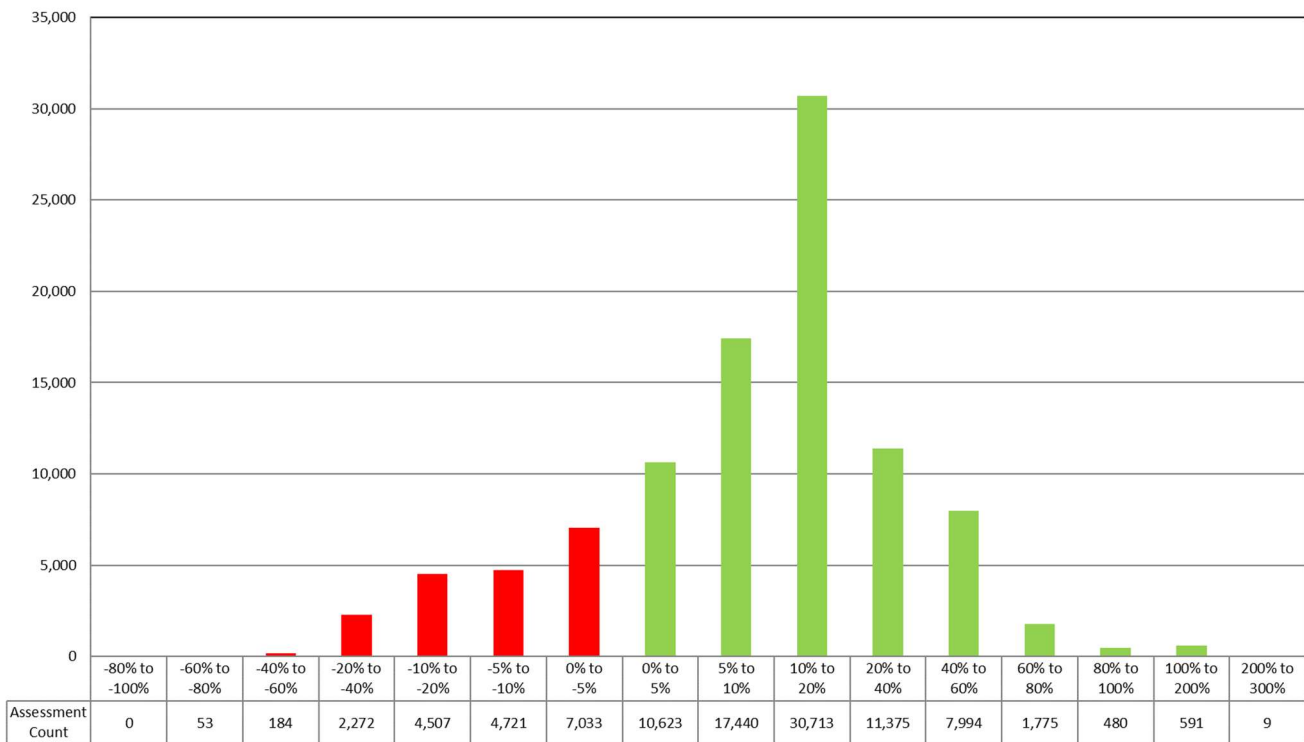
Waitaki – %



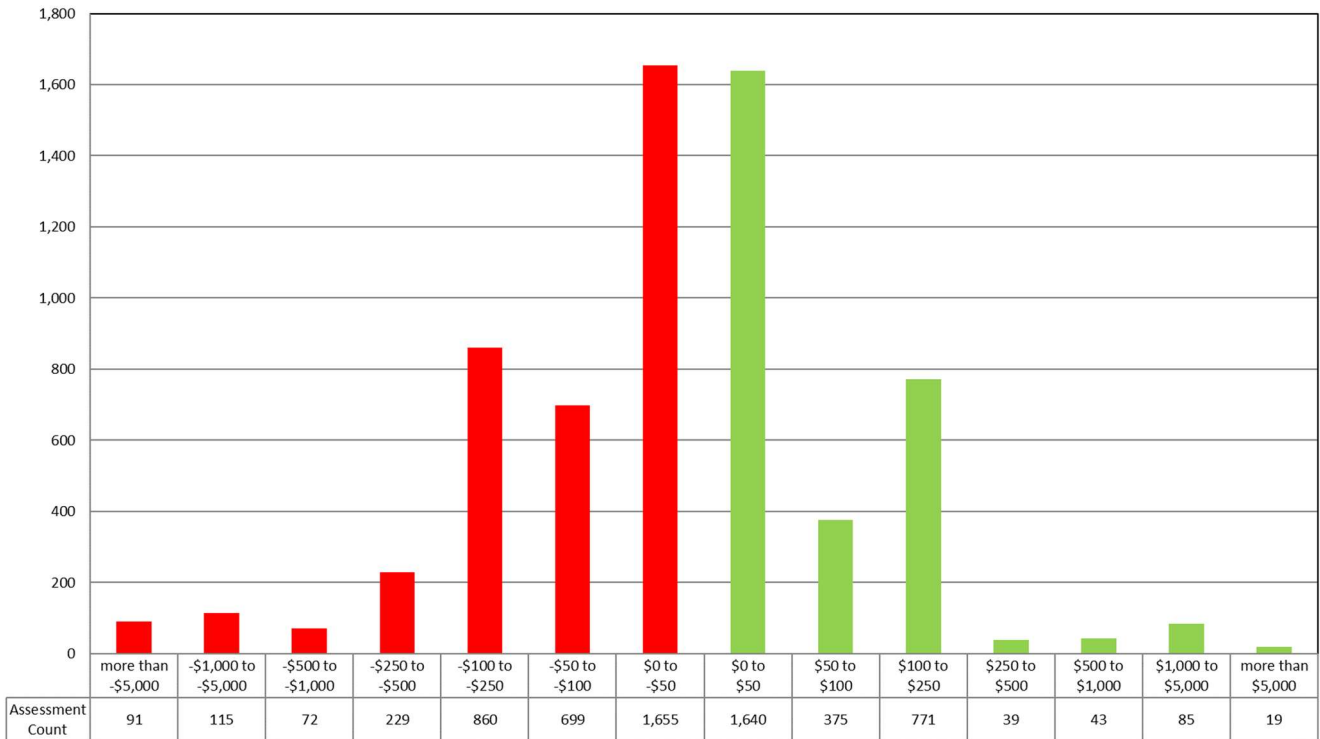
Residential (all Otago) – \$



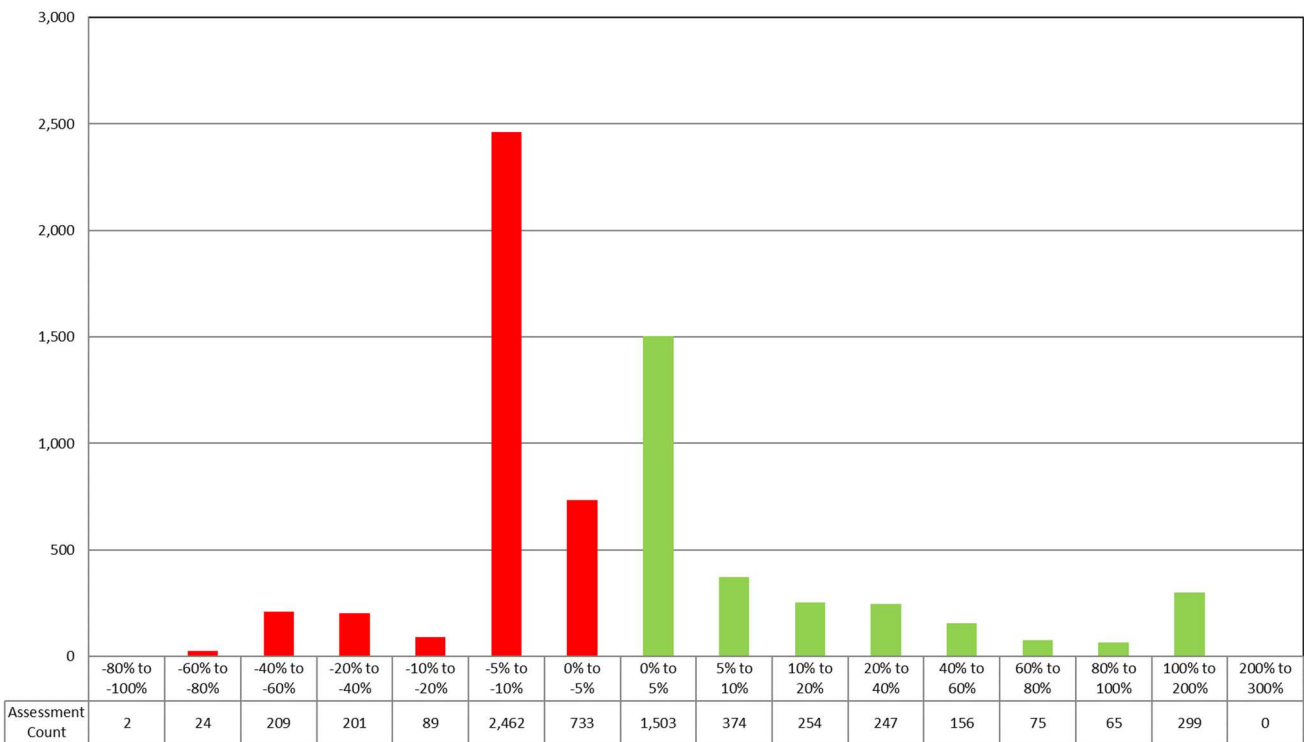
Residential (all Otago) – %



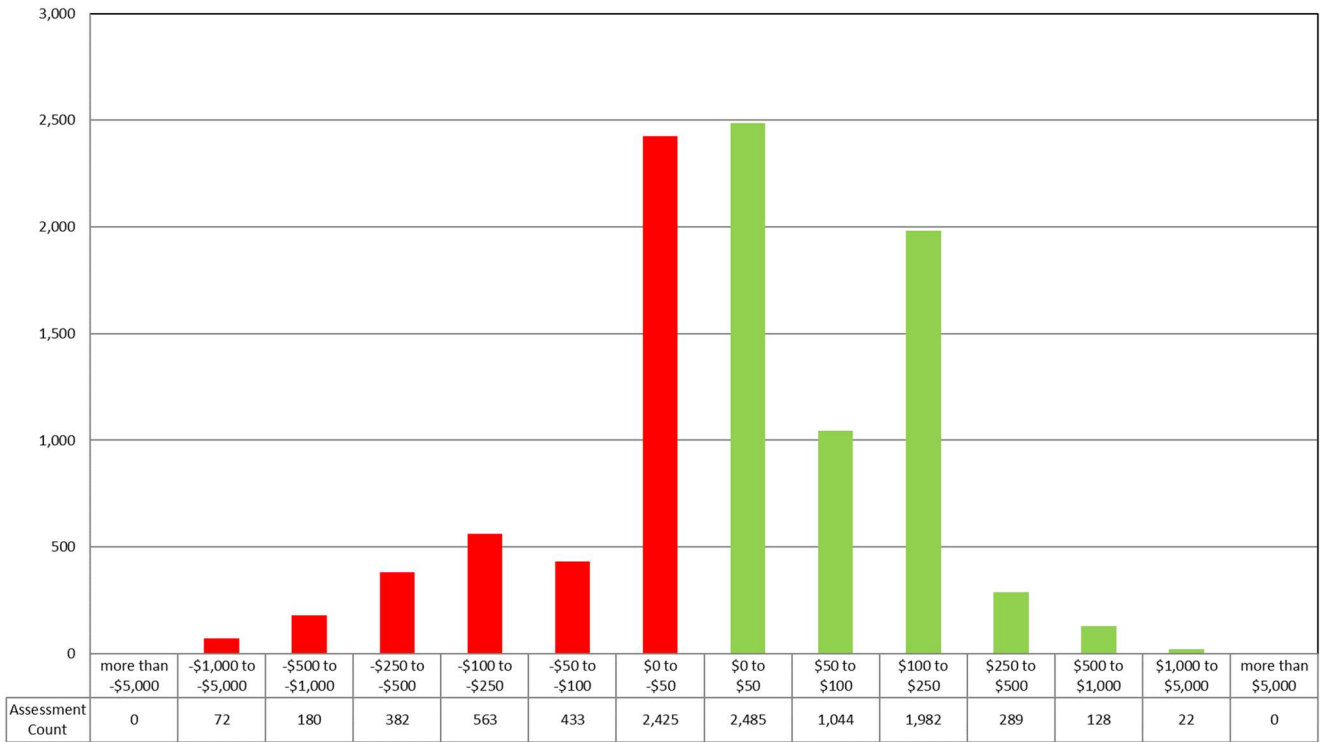
Rural (all Otago) – \$



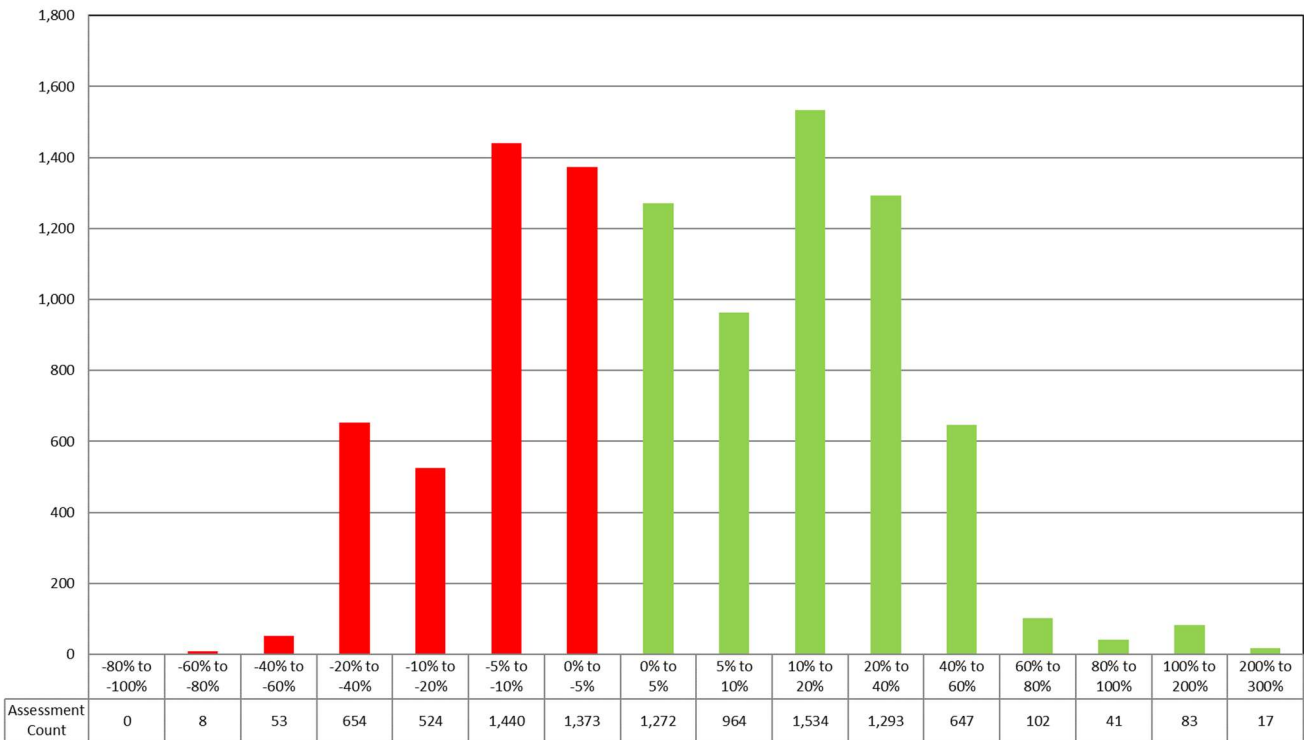
Rural (all Otago) – %



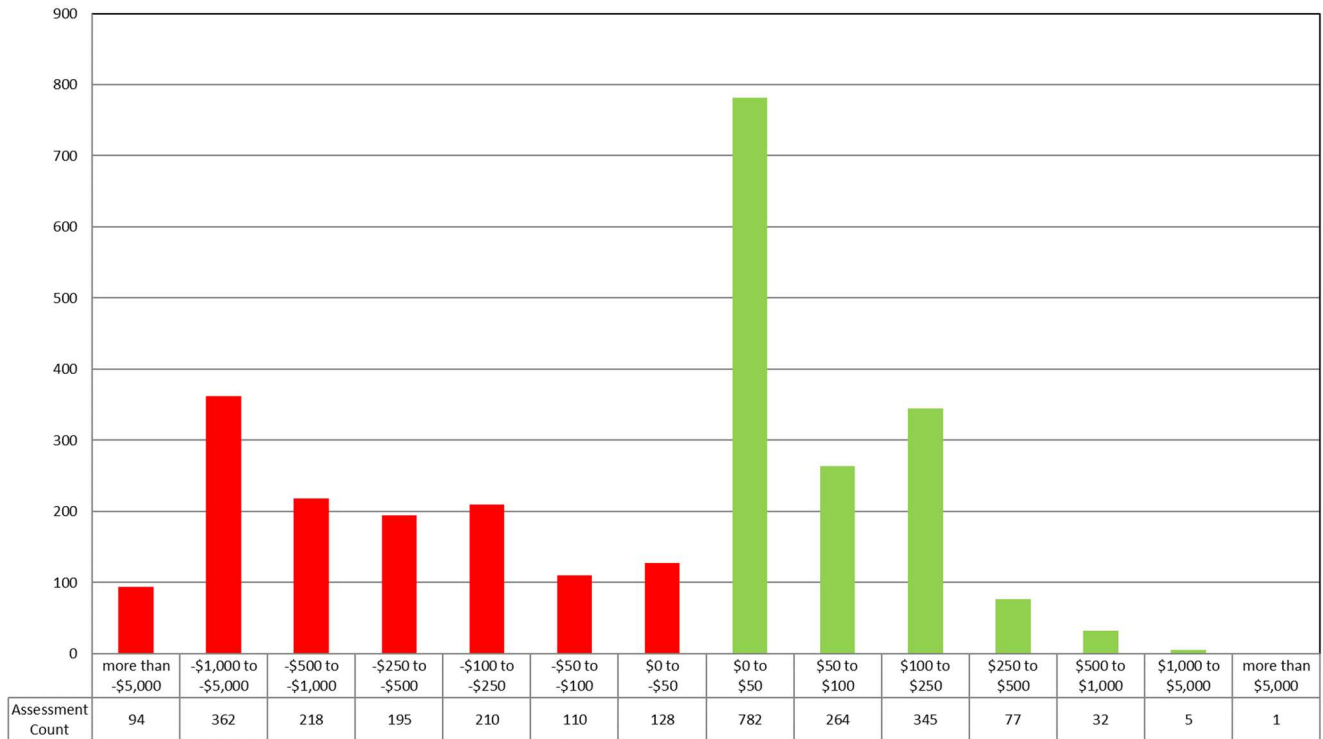
Lifestyle (all Otago) – \$



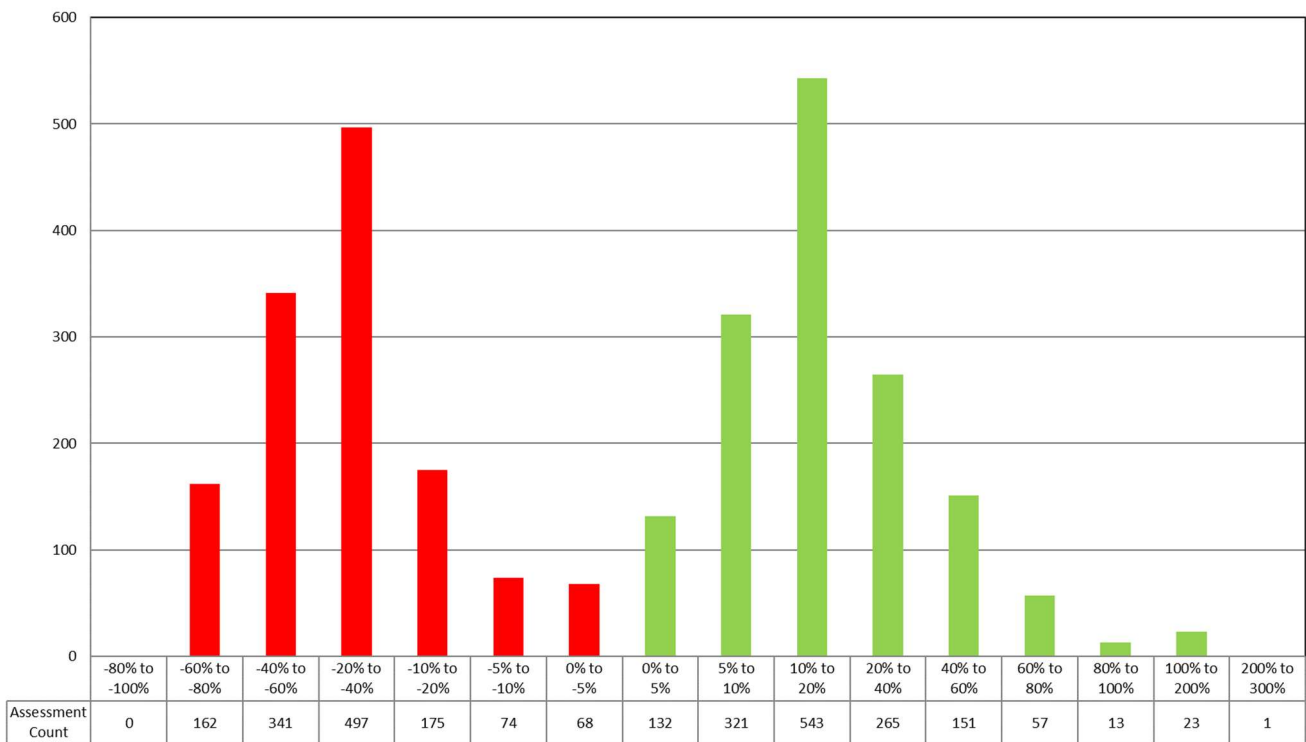
Lifestyle (all Otago) – %



Commercial (all Otago) – \$



Commercial (all Otago) – %



Rate Samples - Current Policy to Proposed Policy

The following pages show samples properties:

District

- residential
- rural/lifestyle
- commercial

Flood & Drainage Schemes

- by benefit zone

Selected Properties

Dunedin – Residential

CV \$590,000 – Median

LevyDescr	24/25 Pre RR	24/25 Post RR
(40) General Rate - Dunedin	124.81	106.02
(40) Uniform General Charge - Dunedin	76.03	72.48
(20) Dunedin Transport Class B - Dunedin	169.16	26.61
(40) Biosecurity - Dunedin	19.85	20.94
(40) River & Waterway Management - Dunedin	4.80	3.56
(70) Leith Flood Indirect	16.80	10.07
(90) Uniform Emergency Management Rate- Dunedin	36.52	36.52
(90) Uniform Targeted Wilding Trees Rate - Dunedin	2.42	-
(NEW) Dunedin Catchment Management	-	28.04
(NEW) Dunedin Harbours Management	-	10.85
(NEW) Dunedin Transport Fixed Charge	-	163.86
	450.38	478.94

CV \$670,000 – Leith Direct

LevyDescr	24/25 Pre RR	24/25 Post RR
(40) General Rate - Dunedin	141.74	120.39
(40) Uniform General Charge - Dunedin	76.03	72.48
(20) Dunedin Transport Class B - Dunedin	192.10	30.22
(40) Biosecurity - Dunedin	16.74	17.67
(40) River & Waterway Management - Dunedin	5.45	4.04
(60) Leith Flood Direct	363.91	278.24
(90) Uniform Emergency Management Rate- Dunedin	36.52	36.52
(90) Uniform Targeted Wilding Trees Rate - Dunedin	2.42	-
(NEW) Dunedin Catchment Management	-	31.84
(NEW) Dunedin Harbours Management	-	10.85
(NEW) Dunedin Transport Fixed Charge	-	163.86
	834.91	766.11

CV \$500,000 – Aramoana

LevyDescr	24/25 Pre RR	24/25 Post RR
(40) General Rate - Dunedin	105.77	89.84
(40) Uniform General Charge - Dunedin	76.03	72.48
(40) Biosecurity - Dunedin	14.26	15.05
(40) River & Waterway Management - Dunedin	4.07	3.02
(70) Leith Flood Indirect	14.23	8.53
(90) Uniform Emergency Management Rate- Dunedin	36.52	36.52
(90) Uniform Targeted Wilding Trees Rate - Dunedin	2.42	-
(NEW) Dunedin Catchment Management	-	23.76
(NEW) Dunedin Harbours Management	-	10.85
(NEW) Dunedin Transport Fixed Charge	-	163.86
	253.31	423.91

CV \$600,000 – Mosgiel

LevyDescr	24/25 Pre RR	24/25 Post RR
(40) General Rate - Dunedin	126.93	107.81
(40) Uniform General Charge - Dunedin	76.03	72.48
(20) Dunedin Transport Class B - Dunedin	172.03	27.06
(28) Lower Taieri Flood Protection EF8	8.74	19.07
(40) Biosecurity - Dunedin	32.87	34.69
(40) River & Waterway Management - Dunedin	4.88	3.62
(90) Uniform Emergency Management Rate- Dunedin	36.52	36.52
(90) Uniform Targeted Wilding Trees Rate - Dunedin	2.42	-
(NEW) Dunedin Catchment Management	-	28.51
(NEW) Dunedin Harbours Management	-	10.85
(NEW) Dunedin Transport Fixed Charge	-	163.86
(NEW) Leith Flood Indirect	-	10.24
	460.41	514.70

CV \$850,000 – Outram

LevyDescr	24/25 Pre RR	24/25 Post RR
(40) General Rate - Dunedin	179.81	152.74
(40) Uniform General Charge - Dunedin	76.03	72.48
(00) West Taieri Drainage - Uniform	5.38	17.53
(02) Lower Taieri Flood Protection WF2	1,008.75	1,189.49
(02) West Taieri Drainage - WD2	4.72	-
(40) Biosecurity - Dunedin	22.02	23.24
(40) River & Waterway Management - Dunedin	6.92	5.13
(90) Uniform Emergency Management Rate- Dunedin	36.52	36.52
(90) Uniform Targeted Wilding Trees Rate - Dunedin	2.42	-
(NEW) Dunedin Catchment Management	-	40.39
(NEW) Dunedin Harbours Management	-	10.85
(NEW) Dunedin Transport Fixed Charge	-	163.86
(NEW) Leith Flood Indirect	-	14.50
	1,342.56	1,726.72

CV \$150,000 – Middlemarch

LevyDescr	24/25 Pre RR	24/25 Post RR
(40) General Rate - Dunedin	31.73	26.95
(40) Uniform General Charge - Dunedin	76.03	72.48
(40) Biosecurity - Dunedin	4.96	5.24
(40) River & Waterway Management - Dunedin	1.22	0.91
(90) Uniform Emergency Management Rate- Dunedin	36.52	36.52
(90) Uniform Targeted Wilding Trees Rate - Dunedin	2.42	-
(NEW) Dunedin Catchment Management	-	7.13
(NEW) Dunedin Harbours Management	-	10.85
(NEW) Dunedin Transport Fixed Charge	-	163.86
(NEW) Leith Flood Indirect	-	2.56
	152.88	326.48

CV \$310,000 – Hyde

LevyDescr	24/25 Pre RR	24/25 Post RR
(40) General Rate - Dunedin	65.58	55.70
(40) Uniform General Charge - Dunedin	76.03	72.48
(40) Biosecurity - Dunedin	3.72	3.93
(40) River & Waterway Management - Dunedin	2.52	1.87
(90) Uniform Emergency Management Rate- Dunedin	36.52	36.52
(90) Uniform Targeted Wilding Trees Rate - Dunedin	2.42	-
(NEW) Dunedin Catchment Management	-	14.73
(NEW) Dunedin Harbours Management	-	10.85
(NEW) Dunedin Transport Fixed Charge	-	163.86
(NEW) Leith Flood Indirect	-	5.29
	186.79	365.22

Dunedin – Rural / Lifestyle

CV \$800,000 – Median Rural

LevyDescr	24/25 Pre RR	24/25 Post RR
(40) General Rate - Dunedin	169.24	143.75
(40) Uniform General Charge - Dunedin	76.03	72.48
(04) Rural Water Quality - Dunedin	52.94	-
(40) Biosecurity - Dunedin	40.93	43.20
(40) River & Waterway Management - Dunedin	6.51	4.83
(90) Uniform Emergency Management Rate- Dunedin	36.52	36.52
(90) Uniform Targeted Wilding Trees Rate - Dunedin	2.42	-
(NEW) Dunedin Catchment Management	-	38.02
(NEW) Dunedin Harbours Management	-	10.85
(NEW) Dunedin Transport Fixed Charge	-	163.86
(NEW) Leith Flood Indirect	-	13.65
	384.59	527.15

CV \$8,540,000 – West Taieri (WF1)

LevyDescr	24/25 Pre RR	24/25 Post RR
(40) General Rate - Dunedin	1,806.61	1,534.55
(40) Uniform General Charge - Dunedin	76.03	72.48
(00) West Taieri Drainage - Uniform	9,002.20	29,354.98
(01) Lower Taieri Flood Protection WF1	17,128.33	11,950.83
(01) West Taieri Drainage - WD1	28,759.10	-
(04) Rural Water Quality - Dunedin	565.17	-
(05) Dairy Environmental Monitoring Rate	560.32	560.32
(40) Biosecurity - Dunedin	429.79	453.58
(40) River & Waterway Management - Dunedin	69.51	51.54
(90) Uniform Emergency Management Rate- Dunedin	36.52	36.52
(90) Uniform Targeted Wilding Trees Rate - Dunedin	2.42	-
(NEW) Dunedin Catchment Management	-	405.85
(NEW) Dunedin Harbours Management	-	10.85
(NEW) Dunedin Transport Fixed Charge	-	163.86
(NEW) Leith Flood Indirect	-	145.71
	58,435.99	44,741.07

CV \$4,290,000 – West Taieri (WF2)

LevyDescr	24/25 Pre RR	24/25 Post RR
(40) General Rate - Dunedin	907.54	770.87
(40) Uniform General Charge - Dunedin	76.03	72.48
(00) West Taieri Drainage - Uniform	3,499.15	11,410.26
(02) Lower Taieri Flood Protection WF2	5,091.21	6,003.40
(02) West Taieri Drainage - WD2	3,070.82	-
(04) Rural Water Quality - Dunedin	283.91	-
(40) Biosecurity - Dunedin	221.41	233.66
(40) River & Waterway Management - Dunedin	34.92	25.89
(90) Uniform Emergency Management Rate- Dunedin	36.52	36.52
(90) Uniform Targeted Wilding Trees Rate - Dunedin	2.42	-
(NEW) Dunedin Catchment Management	-	203.87
(NEW) Dunedin Harbours Management	-	10.85
(NEW) Dunedin Transport Fixed Charge	-	163.86
(NEW) Leith Flood Indirect	-	73.20
	13,223.90	19,004.85

CV \$800,000 – Railway Reserve (Rural)

LevyDescr	24/25 Pre RR	24/25 Post RR
(40) General Rate - Dunedin	169.24	143.75
(40) Uniform General Charge - Dunedin	76.03	72.48
(04) Rural Water Quality - Dunedin	52.94	-
(30) Dunedin Transport Class A - Dunedin	860.13	135.31
(40) Biosecurity - Dunedin	48.99	51.71
(40) River & Waterway Management - Dunedin	6.51	4.83
(70) Leith Flood Indirect	22.78	13.65
(90) Uniform Emergency Management Rate- Dunedin	36.52	36.52
(90) Uniform Targeted Wilding Trees Rate - Dunedin	2.42	-
(NEW) Dunedin Catchment Management	-	38.02
(NEW) Dunedin Harbours Management	-	10.85
(NEW) Dunedin Transport Fixed Charge	-	163.86
	1,275.56	670.97

CV \$1,150,000 – Median Lifestyle

LevyDescr	24/25 Pre RR	24/25 Post RR
(40) General Rate - Dunedin	243.28	206.64
(40) Uniform General Charge - Dunedin	76.03	72.48
(04) Rural Water Quality - Dunedin	76.11	-
(40) Biosecurity - Dunedin	43.41	45.82
(40) River & Waterway Management - Dunedin	9.36	6.94
(90) Uniform Emergency Management Rate- Dunedin	36.52	36.52
(90) Uniform Targeted Wilding Trees Rate - Dunedin	2.42	-
(NEW) Dunedin Catchment Management	-	54.65
(NEW) Dunedin Harbours Management	-	10.85
(NEW) Dunedin Transport Fixed Charge	-	163.86
(NEW) Leith Flood Indirect	-	19.62
	487.12	617.37

CV \$630,000 – Momona (Lifestyle)

LevyDescr	24/25 Pre RR	24/25 Post RR
(40) General Rate - Dunedin	133.27	113.20
(00) West Taieri Drainage - Uniform	66.14	215.68
(02) Lower Taieri Flood Protection WF2	747.66	881.62
(02) West Taieri Drainage - WD2	58.04	-
(40) Biosecurity - Dunedin	24.19	25.53
(40) River & Waterway Management - Dunedin	5.13	3.80
(NEW) Dunedin Catchment Management	-	29.94
(NEW) Leith Flood Indirect	-	10.75
	1,034.43	1,280.52

CV \$1,470,000 – Port Chalmers (Lifestyle)

LevyDescr	24/25 Pre RR	24/25 Post RR
(40) General Rate - Dunedin	310.97	264.14
(40) Uniform General Charge - Dunedin	76.03	72.48
(04) Rural Water Quality - Dunedin	97.28	-
(20) Dunedin Transport Class B - Dunedin	421.47	66.30
(40) Biosecurity - Dunedin	37.21	39.27
(40) River & Waterway Management - Dunedin	11.96	8.87
(70) Leith Flood Indirect	41.85	25.08
(90) Uniform Emergency Management Rate- Dunedin	36.52	36.52
(90) Uniform Targeted Wilding Trees Rate - Dunedin	2.42	-
(NEW) Dunedin Catchment Management	-	69.86
(NEW) Dunedin Harbours Management	-	10.85
(NEW) Dunedin Transport Fixed Charge	-	163.86
	1,035.71	757.23

Dunedin – Commercial

CV \$1,580,000 – Median

LevyDescr	24/25 Pre RR	24/25 Post RR
(40) General Rate - Dunedin	334.24	283.91
(40) Uniform General Charge - Dunedin	76.03	72.48
(30) Dunedin Transport Class A - Dunedin	1,698.76	267.24
(40) Biosecurity - Dunedin	49.61	52.36
(40) River & Waterway Management - Dunedin	12.86	9.54
(70) Leith Flood Indirect	44.98	26.96
(90) Uniform Emergency Management Rate- Dunedin	36.52	36.52
(90) Uniform Targeted Wilding Trees Rate - Dunedin	2.42	-
(NEW) Dunedin Catchment Management	-	75.09
(NEW) Dunedin Harbours Management	-	10.85
(NEW) Dunedin Transport Fixed Charge	-	163.86
	2,255.43	998.79

CV \$3,180,000 – Dunedin (Leith Indirect)

LevyDescr	24/25 Pre RR	24/25 Post RR
(40) General Rate - Dunedin	672.72	571.41
(40) Uniform General Charge - Dunedin	76.03	72.48
(20) Dunedin Transport Class B - Dunedin	911.74	143.43
(40) Biosecurity - Dunedin	111.63	117.81
(40) River & Waterway Management - Dunedin	25.88	19.19
(70) Leith Flood Indirect	90.53	54.26
(90) Uniform Emergency Management Rate- Dunedin	36.52	36.52
(90) Uniform Targeted Wilding Trees Rate - Dunedin	2.42	-
(NEW) Dunedin Catchment Management	-	151.12
(NEW) Dunedin Harbours Management	-	10.85
(NEW) Dunedin Transport Fixed Charge	-	163.86
	1,927.47	1,340.93

CV \$3,290,000 – Dunedin (Leith Direct)

LevyDescr	24/25 Pre RR	24/25 Post RR
(40) General Rate - Dunedin	695.99	591.18
(40) Uniform General Charge - Dunedin	76.03	72.48
(20) Dunedin Transport Class B - Dunedin	943.28	148.39
(40) Biosecurity - Dunedin	153.18	161.67
(40) River & Waterway Management - Dunedin	26.78	19.86
(60) Leith Flood Direct	1,786.97	1,366.29
(90) Uniform Emergency Management Rate- Dunedin	36.52	36.52
(90) Uniform Targeted Wilding Trees Rate - Dunedin	2.42	-
(NEW) Dunedin Catchment Management	-	156.35
(NEW) Dunedin Harbours Management	-	10.85
(NEW) Dunedin Transport Fixed Charge	-	163.86
	3,721.17	2,727.44

CV \$4,280,000 – Dunedin Motel (Residential)

LevyDescr	24/25 Pre RR	24/25 Post RR
(40) General Rate - Dunedin	905.42	769.07
(40) Uniform General Charge - Dunedin	76.03	72.48
(20) Dunedin Transport Class B - Dunedin	1,227.12	193.04
(40) Biosecurity - Dunedin	168.69	178.03
(40) River & Waterway Management - Dunedin	34.83	25.83
(60) Leith Flood Direct	2,324.70	1,777.42
(90) Uniform Emergency Management Rate- Dunedin	36.52	36.52
(90) Uniform Targeted Wilding Trees Rate - Dunedin	2.42	-
(NEW) Dunedin Catchment Management	-	203.40
(NEW) Dunedin Harbours Management	-	10.85
(NEW) Dunedin Transport Fixed Charge	-	163.86
	4,775.73	3,430.50

Central Otago – Residential

CV \$700,000 – Central Otago Median

LevyDescr	24/25 Pre RR	24/25 Post RR
(20) General Rate - Central Otago	135.56	125.78
(20) Uniform General Charge - Central Otago	76.03	72.48
(20) River & Waterway Management - Central Otago	16.93	22.55
(20) Biosecurity - Central Otago	19.85	20.94
(70) Uniform Emergency Management Rate- Central Otago	36.52	36.52
(70) Uniform Targeted Wilding Trees Rate - Central Otago	2.42	-
(NEW) Central Otago Catchment Management	-	33.27
(NEW) Central Otago Harbours Management	-	10.85
	287.30	322.38

CV \$800,000 – Cromwell

LevyDescr	24/25 Pre RR	24/25 Post RR
(20) General Rate - Central Otago	154.92	143.75
(20) Uniform General Charge - Central Otago	76.03	72.48
(20) River & Waterway Management - Central Otago	19.35	25.77
(20) Biosecurity - Central Otago	34.11	36.00
(70) Uniform Emergency Management Rate- Central Otago	36.52	36.52
(70) Uniform Targeted Wilding Trees Rate - Central Otago	2.42	-
(NEW) Central Otago Catchment Management	-	38.02
(NEW) Central Otago Harbours Management	-	10.85
	323.35	363.37

CV \$650,000 – Alexandra

LevyDescr	24/25 Pre RR	24/25 Post RR
(20) General Rate - Central Otago	125.88	116.80
(20) Uniform General Charge - Central Otago	76.03	72.48
(20) River & Waterway Management - Central Otago	15.72	20.93
(20) Biosecurity - Central Otago	17.68	18.65
(70) Uniform Emergency Management Rate- Central Otago	36.52	36.52
(70) Uniform Targeted Wilding Trees Rate - Central Otago	2.42	-
(NEW) Central Otago Catchment Management	-	30.89
(NEW) Central Otago Harbours Management	-	10.85
	274.24	307.12

CV \$830,000 – Clyde

LevyDescr	24/25 Pre RR	24/25 Post RR
(20) General Rate - Central Otago	160.73	149.14
(20) Uniform General Charge - Central Otago	76.03	72.48
(20) River & Waterway Management - Central Otago	20.08	26.73
(20) Biosecurity - Central Otago	31.01	32.73
(70) Uniform Emergency Management Rate- Central Otago	36.52	36.52
(70) Uniform Targeted Wilding Trees Rate - Central Otago	2.42	-
(NEW) Central Otago Catchment Management	-	39.44
(NEW) Central Otago Harbours Management	-	10.85
	326.78	367.88

Central Otago – Rural / Lifestyle

CV \$2,000,000 – Median Rural

LevyDescr	24/25 Pre RR	24/25 Post RR
(20) General Rate - Central Otago	387.31	359.38
(20) Uniform General Charge - Central Otago	76.03	72.48
(02) Rural Water Quality - Central Otago	132.36	-
(20) River & Waterway Management - Central Otago	48.38	64.41
(20) Biosecurity - Central Otago	43.41	45.82
(70) Uniform Emergency Management Rate- Central Otago	36.52	36.52
(70) Uniform Targeted Wilding Trees Rate - Central Otago	2.42	-
(NEW) Central Otago Catchment Management	-	95.05
(NEW) Central Otago Harbours Management	-	10.85
	726.42	684.50

CV \$10,850,000 – Farm

LevyDescr	24/25 Pre RR	24/25 Post RR
(20) General Rate - Central Otago	2,101.16	1,949.64
(20) Uniform General Charge - Central Otago	76.03	72.48
(02) Rural Water Quality - Central Otago	718.05	-
(20) River & Waterway Management - Central Otago	262.45	349.45
(20) Biosecurity - Central Otago	507.93	536.05
(70) Uniform Emergency Management Rate- Central Otago	36.52	36.52
(70) Uniform Targeted Wilding Trees Rate - Central Otago	2.42	-
(NEW) Central Otago Catchment Management	-	515.62
(NEW) Central Otago Harbours Management	-	10.85
	3,704.54	3,470.60

CV \$1,000,000 – Median Lifestyle

LevyDescr	24/25 Pre RR	24/25 Post RR
(20) General Rate - Central Otago	193.66	179.69
(20) Uniform General Charge - Central Otago	76.03	72.48
(20) River & Waterway Management - Central Otago	24.19	32.21
(20) Biosecurity - Central Otago	34.73	36.65
(70) Uniform Emergency Management Rate- Central Otago	36.52	36.52
(70) Uniform Targeted Wilding Trees Rate - Central Otago	2.42	-
(NEW) Central Otago Catchment Management	-	47.52
(NEW) Central Otago Harbours Management	-	10.85
	367.54	415.91

Central Otago – Commercial

CV \$650,000 – Median

LevyDescr	24/25 Pre RR	24/25 Post RR
(20) General Rate - Central Otago	125.88	116.80
(20) Uniform General Charge - Central Otago	76.03	72.48
(20) River & Waterway Management - Central Otago	15.72	20.93
(20) Biosecurity - Central Otago	21.71	22.91
(70) Uniform Emergency Management Rate- Central Otago	36.52	36.52
(70) Uniform Targeted Wilding Trees Rate - Central Otago	2.42	-
(NEW) Central Otago Catchment Management	-	30.89
(NEW) Central Otago Harbours Management	-	10.85
	278.27	311.37

CV \$2,780,000

LevyDescr	24/25 Pre RR	24/25 Post RR
(20) General Rate - Central Otago	538.36	499.54
(20) Uniform General Charge - Central Otago	76.03	72.48
(20) River & Waterway Management - Central Otago	67.24	89.54
(20) Biosecurity - Central Otago	110.39	116.51
(70) Uniform Emergency Management Rate- Central Otago	36.52	36.52
(70) Uniform Targeted Wilding Trees Rate - Central Otago	2.42	-
(NEW) Central Otago Catchment Management	-	132.11
(NEW) Central Otago Harbours Management	-	10.85
	830.96	957.53

CV \$5,120,000

LevyDescr	24/25 Pre RR	24/25 Post RR
(20) General Rate - Central Otago	991.51	920.01
(20) Uniform General Charge - Central Otago	76.03	72.48
(20) River & Waterway Management - Central Otago	123.85	164.90
(20) Biosecurity - Central Otago	106.67	112.58
(70) Uniform Emergency Management Rate- Central Otago	36.52	36.52
(70) Uniform Targeted Wilding Trees Rate - Central Otago	2.42	-
(NEW) Central Otago Catchment Management	-	243.32
(NEW) Central Otago Harbours Management	-	10.85
	1,336.99	1,560.65

Clutha – Residential

CV \$300,000 – Median

LevyDescr	24/25 Pre RR	24/25 Post RR
(50) General Rate - Clutha	75.54	67.26
(50) Uniform General Charge - Clutha	76.03	72.48
(00) Uniform Emergency Management Rate- Clutha	36.52	36.52
(00) Uniform Targeted Wilding Trees Rate - Clutha	2.42	-
(50) Biosecurity - Clutha	4.07	4.30
(50) River & Waterway Management - Clutha	17.44	17.44
(NEW) Clutha Catchment Management	-	17.79
(NEW) Clutha Harbours Management	-	10.85
	212.01	226.62

CV \$310,000 – Balclutha Resident

LevyDescr	24/25 Pre RR	24/25 Post RR
(50) General Rate - Clutha	78.06	69.50
(50) Uniform General Charge - Clutha	76.03	72.48
(00) Uniform Emergency Management Rate- Clutha	36.52	36.52
(00) Uniform Targeted Wilding Trees Rate - Clutha	2.42	-
(20) Lower Clutha Flood Protection & Drainage U4	58.15	149.75
(50) Biosecurity - Clutha	8.98	9.47
(50) River & Waterway Management - Clutha	18.02	18.02
(NEW) Clutha Catchment Management	-	18.38
(NEW) Clutha Harbours Management	-	10.85
	278.16	384.96

CV \$240,000 – Lawrence Resident

LevyDescr	24/25 Pre RR	24/25 Post RR
(50) General Rate - Clutha	60.43	53.81
(50) Uniform General Charge - Clutha	76.03	72.48
(00) Uniform Emergency Management Rate- Clutha	36.52	36.52
(00) Uniform Targeted Wilding Trees Rate - Clutha	2.42	-
(50) Biosecurity - Clutha	3.02	3.18
(50) River & Waterway Management - Clutha	13.95	13.95
(NEW) Clutha Catchment Management	-	14.23
(NEW) Clutha Harbours Management	-	10.85
	192.36	205.01

CV \$290,000 – Milton Resident

LevyDescr	24/25 Pre RR	24/25 Post RR
(50) General Rate - Clutha	73.02	65.02
(50) Uniform General Charge - Clutha	76.03	72.48
(00) Uniform Emergency Management Rate- Clutha	36.52	36.52
(00) Uniform Targeted Wilding Trees Rate - Clutha	2.42	-
(10) Tokomairiro Drainage U1	40.08	32.14
(50) Biosecurity - Clutha	11.69	12.34
(50) River & Waterway Management - Clutha	16.86	16.86
(NEW) Clutha Catchment Management	-	17.20
(NEW) Clutha Harbours Management	-	10.85
	256.61	263.38

Clutha – Rural / Lifestyle

CV \$1,400,000 – Median Rural

LevyDescr	24/25 Pre RR	24/25 Post RR
(50) General Rate - Clutha	352.51	313.87
(50) Uniform General Charge - Clutha	76.03	72.48
(00) Uniform Emergency Management Rate- Clutha	36.52	36.52
(00) Uniform Targeted Wilding Trees Rate - Clutha	2.42	-
(05) Rural Water Quality - Clutha	92.65	-
(50) Biosecurity - Clutha	101.83	107.47
(50) River & Waterway Management - Clutha	81.37	81.37
(NEW) Clutha Catchment Management	-	83.01
(NEW) Clutha Harbours Management	-	10.85
	743.33	705.56

CV \$2,990,000 – Tokomairiro Rural

LevyDescr	24/25 Pre RR	24/25 Post RR
(50) General Rate - Clutha	752.86	670.34
(50) Uniform General Charge - Clutha	76.03	72.48
(00) Uniform Emergency Management Rate- Clutha	36.52	36.52
(00) Uniform Targeted Wilding Trees Rate - Clutha	2.42	-
(05) Dairy Environmental Monitoring Rate	560.32	560.32
(05) Rural Water Quality - Clutha	197.88	-
(40) Tokomairiro Drainage B	1,148.40	319.22
(50) Biosecurity - Clutha	178.02	187.87
(50) River & Waterway Management - Clutha	173.79	173.79
(80) Tokomairiro Drainage F	122.35	255.07
(NEW) Clutha Catchment Management	-	177.29
(NEW) Clutha Harbours Management	-	10.85
	3,248.57	2,463.75

CV \$300,000 – Median Lifestyle

LevyDescr	24/25 Pre RR	24/25 Post RR
(50) General Rate - Clutha	75.54	67.26
(50) Uniform General Charge - Clutha	76.03	72.48
(00) Uniform Emergency Management Rate- Clutha	36.52	36.52
(00) Uniform Targeted Wilding Trees Rate - Clutha	2.42	-
(05) Rural Water Quality - Clutha	19.85	-
(50) Biosecurity - Clutha	5.51	5.81
(50) River & Waterway Management - Clutha	17.44	17.44
(NEW) Clutha Catchment Management	-	17.79
(NEW) Clutha Harbours Management	-	10.85
	233.30	228.13

CV \$600,000 – Lifestyle

LevyDescr	24/25 Pre RR	24/25 Post RR
(50) General Rate - Clutha	151.08	134.52
(50) Uniform General Charge - Clutha	76.03	72.48
(00) Uniform Emergency Management Rate- Clutha	36.52	36.52
(00) Uniform Targeted Wilding Trees Rate - Clutha	2.42	-
(05) Rural Water Quality - Clutha	39.71	-
(50) Biosecurity - Clutha	15.09	15.92
(50) River & Waterway Management - Clutha	34.87	34.87
(60) Lower Clutha Flood Protection & Drainage F	75.03	752.56
(NEW) Clutha Catchment Management	-	35.58
(NEW) Clutha Harbours Management	-	10.85
	430.74	1,093.28

Clutha – Commercial

CV \$200,000 – Median

LevyDescr	24/25 Pre RR	24/25 Post RR
(50) General Rate - Clutha	50.36	44.84
(50) Uniform General Charge - Clutha	76.03	72.48
(00) Uniform Emergency Management Rate- Clutha	36.52	36.52
(00) Uniform Targeted Wilding Trees Rate - Clutha	2.42	-
(10) Tokomairiro Drainage U1	27.64	22.16
(50) Biosecurity - Clutha	8.67	9.15
(50) River & Waterway Management - Clutha	11.62	11.62
(NEW) Clutha Catchment Management	-	11.86
(NEW) Clutha Harbours Management	-	10.85
	213.26	219.48

CV \$2,610,000 – Commercial

LevyDescr	24/25 Pre RR	24/25 Post RR
(50) General Rate - Clutha	657.18	585.15
(50) Uniform General Charge - Clutha	76.03	72.48
(00) Lower Clutha Flood Protection & Drainage U2	2,937.44	1,260.80
(00) Uniform Emergency Management Rate- Clutha	36.52	36.52
(00) Uniform Targeted Wilding Trees Rate - Clutha	2.42	-
(50) Biosecurity - Clutha	51.29	54.13
(50) River & Waterway Management - Clutha	151.70	151.70
(NEW) Clutha Catchment Management	-	154.76
(NEW) Clutha Harbours Management	-	10.85
	3,912.58	2,326.38

Queenstown Lakes – Residential

CV \$1,200,000 – Median

LevyDescr	24/25 Pre RR	24/25 Post RR
(30) General Rate - Queenstown	228.27	229.84
(30) Uniform General Charge - Queenstown	76.03	72.48
(30) Biosecurity - Queenstown	39.46	41.64
(60) River & Waterway Management - Wanaka	18.66	12.25
(80) Uniform Emergency Management Rate- Queenstown	36.52	36.52
(80) Uniform Targeted Wilding Trees Rate - Queenstown	2.42	-
(NEW) Queenstown Catchment Management	-	60.79
(NEW) Wakatipu Transport Fixed Charge	-	128.59
	401.35	582.11

CV \$1,500,000 – Wanaka Resident

LevyDescr	24/25 Pre RR	24/25 Post RR
(30) General Rate - Queenstown	285.34	287.31
(30) Uniform General Charge - Queenstown	76.03	72.48
(30) Biosecurity - Queenstown	79.61	84.01
(60) River & Waterway Management - Wanaka	23.32	15.31
(80) Uniform Emergency Management Rate- Queenstown	36.52	36.52
(80) Uniform Targeted Wilding Trees Rate - Queenstown	2.42	-
(NEW) Queenstown Catchment Management	-	75.98
(NEW) Wakatipu Transport Fixed Charge	-	128.59
	503.23	700.20

CV \$1,300,000 – Shotover Country Resident

LevyDescr	24/25 Pre RR	24/25 Post RR
(30) General Rate - Queenstown	247.29	249.00
(30) Uniform General Charge - Queenstown	76.03	72.48
(30) Biosecurity - Queenstown	27.69	29.22
(70) River & Waterway Management - Wakatipu	11.64	13.27
(70) Wakatipu Transport Class B	177.85	17.90
(80) Uniform Emergency Management Rate- Queenstown	36.52	36.52
(80) Uniform Targeted Wilding Trees Rate - Queenstown	2.42	-
(NEW) Queenstown Catchment Management	-	65.85
(NEW) Wakatipu Transport Fixed Charge	-	128.59
	579.43	612.82

CV \$760,000 – Luggate Resident

LevyDescr	24/25 Pre RR	24/25 Post RR
(30) General Rate - Queenstown	144.57	145.57
(30) Uniform General Charge - Queenstown	76.03	72.48
(30) Biosecurity - Queenstown	29.42	31.05
(60) River & Waterway Management - Wanaka	11.82	7.76
(80) Uniform Emergency Management Rate- Queenstown	36.52	36.52
(80) Uniform Targeted Wilding Trees Rate - Queenstown	2.42	-
(NEW) Queenstown Catchment Management	-	38.50
(NEW) Wakatipu Transport Fixed Charge	-	128.59
	300.77	460.46

Queenstown Lakes – Rural / Lifestyle

CV \$2,650,000 – Median Rural

LevyDescr	24/25 Pre RR	24/25 Post RR
(30) General Rate - Queenstown	504.09	507.57
(30) Uniform General Charge - Queenstown	76.03	72.48
(03) Rural Water Quality - Queenstown	175.38	-
(30) Biosecurity - Queenstown	181.36	191.40
(60) River & Waterway Management - Wanaka	41.20	27.05
(80) Uniform Emergency Management Rate- Queenstown	36.52	36.52
(80) Uniform Targeted Wilding Trees Rate - Queenstown	2.42	-
(NEW) Queenstown Catchment Management	-	134.24
(NEW) Wakatipu Transport Fixed Charge	-	128.59
	1,016.99	1,097.85

CV \$3,000,000 – Wanaka Lifestyle

LevyDescr	24/25 Pre RR	24/25 Post RR
(30) General Rate - Queenstown	570.67	574.61
(30) Uniform General Charge - Queenstown	76.03	72.48
(30) Biosecurity - Queenstown	123.91	130.77
(60) River & Waterway Management - Wanaka	46.64	30.62
(80) Uniform Emergency Management Rate- Queenstown	36.52	36.52
(80) Uniform Targeted Wilding Trees Rate - Queenstown	2.42	-
(NEW) Queenstown Catchment Management	-	151.97
(NEW) Wakatipu Transport Fixed Charge	-	128.59
	856.18	1,125.55

Queenstown Lakes – Commercial

CV \$2,700,000 – Median

LevyDescr	24/25 Pre RR	24/25 Post RR
(30) General Rate - Queenstown	513.60	517.15
(30) Uniform General Charge - Queenstown	76.03	72.48
(30) Biosecurity - Queenstown	88.60	93.51
(60) Wakatipu Transport Class A	738.75	74.35
(70) River & Waterway Management - Wakatipu	24.17	27.56
(80) Uniform Emergency Management Rate- Queenstown	36.52	36.52
(80) Uniform Targeted Wilding Trees Rate - Queenstown	2.42	-
(NEW) Queenstown Catchment Management	-	136.77
(NEW) Wakatipu Transport Fixed Charge	-	128.59
	1,480.09	1,086.92

CV \$116,050,000 – Queenstown Hotel

LevyDescr	24/25 Pre RR	24/25 Post RR
(30) General Rate - Queenstown	22,075.49	22,227.86
(30) Uniform General Charge - Queenstown	76.03	72.48
(30) Biosecurity - Queenstown	3,236.14	3,415.33
(60) Wakatipu Transport Class A	31,752.61	3,195.71
(70) River & Waterway Management - Wakatipu	1,038.66	1,184.38
(80) Uniform Emergency Management Rate- Queenstown	36.52	36.52
(80) Uniform Targeted Wilding Trees Rate - Queenstown	2.42	-
(NEW) Queenstown Catchment Management	-	5,878.65
(NEW) Wakatipu Transport Fixed Charge	-	128.59
	58,217.86	36,139.52

CV \$11,950,000 – Wanaka Commercial

LevyDescr	24/25 Pre RR	24/25 Post RR
(30) General Rate - Queenstown	2,273.18	2,288.87
(30) Uniform General Charge - Queenstown	76.03	72.48
(30) Biosecurity - Queenstown	409.80	432.49
(60) River & Waterway Management - Wanaka	185.79	121.96
(80) Uniform Emergency Management Rate- Queenstown	36.52	36.52
(80) Uniform Targeted Wilding Trees Rate - Queenstown	2.42	-
(NEW) Queenstown Catchment Management	-	605.34
(NEW) Wakatipu Transport Fixed Charge	-	128.59
	2,983.72	3,686.24

CV \$108,000,000 – Queenstown Airport (Terminal)

LevyDescr	24/25 Pre RR	24/25 Post RR
(30) General Rate - Queenstown	20,544.18	20,685.99
(30) Uniform General Charge - Queenstown	76.03	72.48
(30) Biosecurity - Queenstown	4,014.89	4,237.20
(60) Wakatipu Transport Class A	29,550.04	2,974.04
(70) River & Waterway Management - Wakatipu	966.61	1,102.22
(80) Uniform Emergency Management Rate- Queenstown	36.52	36.52
(80) Uniform Targeted Wilding Trees Rate - Queenstown	2.42	-
(NEW) Queenstown Catchment Management	-	5,470.87
(NEW) Wakatipu Transport Fixed Charge	-	128.59
	55,190.69	34,707.90

Waitaki – Residential

CV \$335,000 – Median

LevyDescr	24/25 Pre RR	24/25 Post RR
(10) General Rate - Waitaki	85.04	77.05
(10) Uniform General Charge - Waitaki	76.03	72.48
(10) Biosecurity - Waitaki	9.84	10.38
(10) River & Waterway Management - Waitaki	21.83	33.07
(60) Uniform Emergency Management Rate - Waitaki	36.52	36.52
(60) Uniform Targeted Wilding Trees Rate - Waitaki	2.42	-
(New) Oamaru Public Transport	-	5.43
(NEW) Waitaki Catchment Management	-	20.38
(NEW) Waitaki Harbours Management	-	10.85
	231.67	266.14

CV \$400,000 – Palmerston Resident

LevyDescr	24/25 Pre RR	24/25 Post RR
(10) General Rate - Waitaki	101.54	91.99
(10) Uniform General Charge - Waitaki	76.03	72.48
(10) Biosecurity - Waitaki	10.63	11.21
(10) River & Waterway Management - Waitaki	26.06	39.49
(21) Dunedin Transport Class B - Waitaki	114.68	18.04
(60) Uniform Emergency Management Rate - Waitaki	36.52	36.52
(60) Uniform Targeted Wilding Trees Rate - Waitaki	2.42	-
(NEW) Palmerston Transport Fixed Charge	-	163.86
(NEW) Waitaki Catchment Management	-	24.33
(NEW) Waitaki Harbours Management	-	10.85
	367.88	468.77

CV \$500,000 – Oamaru Resident

LevyDescr	24/25 Pre RR	24/25 Post RR
(10) General Rate - Waitaki	126.93	114.99
(10) Uniform General Charge - Waitaki	76.03	72.48
(10) Biosecurity - Waitaki	9.84	10.38
(10) River & Waterway Management - Waitaki	32.58	49.36
(60) Uniform Emergency Management Rate - Waitaki	36.52	36.52
(60) Uniform Targeted Wilding Trees Rate - Waitaki	2.42	-
(New) Oamaru Public Transport	-	5.43
(NEW) Waitaki Catchment Management	-	30.41
(NEW) Waitaki Harbours Management	-	10.85
	284.30	330.41

Waitaki – Rural / Lifestyle

CV \$1,200,000 – Median Rural

LevyDescr	24/25 Pre RR	24/25 Post RR
(10) General Rate - Waitaki	304.62	275.98
(10) Uniform General Charge - Waitaki	76.03	72.48
(01) Rural Water Quality - Waitaki	79.42	-
(10) Biosecurity - Waitaki	82.64	87.22
(10) River & Waterway Management - Waitaki	78.18	118.47
(60) Uniform Emergency Management Rate - Waitaki	36.52	36.52
(60) Uniform Targeted Wilding Trees Rate - Waitaki	2.42	-
(New) Oamaru Public Transport	-	5.43
(NEW) Waitaki Catchment Management	-	72.99
(NEW) Waitaki Harbours Management	-	10.85
	659.82	679.92

CV \$500,000 – Median Lifestyle

LevyDescr	24/25 Pre RR	24/25 Post RR
(10) General Rate - Waitaki	126.93	114.99
(10) Uniform General Charge - Waitaki	76.03	72.48
(01) Rural Water Quality - Waitaki	33.09	-
(10) Biosecurity - Waitaki	15.74	16.61
(10) River & Waterway Management - Waitaki	32.58	49.36
(60) Uniform Emergency Management Rate - Waitaki	36.52	36.52
(60) Uniform Targeted Wilding Trees Rate - Waitaki	2.42	-
(New) Oamaru Public Transport	-	5.43
(NEW) Waitaki Catchment Management	-	30.41
(NEW) Waitaki Harbours Management	-	10.85
	323.30	336.64

Waitaki – Commercial

CV \$310,000 – Median

LevyDescr	24/25 Pre RR	24/25 Post RR
(10) General Rate - Waitaki	78.69	71.30
(10) Uniform General Charge - Waitaki	76.03	72.48
(10) Biosecurity - Waitaki	5.51	5.81
(10) River & Waterway Management - Waitaki	20.20	30.60
(60) Uniform Emergency Management Rate- Waitaki	36.52	36.52
(60) Uniform Targeted Wilding Trees Rate - Waitaki	2.42	-
(New) Oamaru Public Transport	-	5.43
(NEW) Waitaki Catchment Management	-	18.86
(NEW) Waitaki Harbours Management	-	10.85
	219.36	251.83

CV \$2,100,000 – Commercial

LevyDescr	24/25 Pre RR	24/25 Post RR
(10) General Rate - Waitaki	533.09	482.97
(10) Uniform General Charge - Waitaki	76.03	72.48
(10) Biosecurity - Waitaki	22.43	23.67
(10) River & Waterway Management - Waitaki	136.82	207.32
(60) Uniform Emergency Management Rate- Waitaki	36.52	36.52
(60) Uniform Targeted Wilding Trees Rate - Waitaki	2.42	-
(New) Oamaru Public Transport	-	5.43
(NEW) Waitaki Catchment Management	-	127.73
(NEW) Waitaki Harbours Management	-	10.85
	807.30	966.96

Lower Clutha Flood & Drainage

CV \$995,000 – A Rural

LevyDescr	24/25 Pre RR	24/25 Post RR
(50) General Rate - Clutha	250.53	223.07
(50) Uniform General Charge - Clutha	76.03	72.48
(00) Uniform Emergency Management Rate- Clutha	36.52	36.52
(00) Uniform Targeted Wilding Trees Rate - Clutha	2.42	-
(05) Rural Water Quality - Clutha	65.85	-
(10) Lower Clutha Flood Protection & Drainage A	2,967.70	437.74
(50) Biosecurity - Clutha	61.85	65.28
(50) Lower Clutha Flood Protection & Drainage E	686.65	810.25
(50) River & Waterway Management - Clutha	57.83	57.83
(NEW) Clutha Catchment Management	-	59.00
(NEW) Clutha Harbours Management	-	10.85
	4,205.39	1,773.01

CV \$2,950,000 – B Rural

LevyDescr	24/25 Pre RR	24/25 Post RR
(50) General Rate - Clutha	742.79	661.38
(50) Uniform General Charge - Clutha	76.03	72.48
(00) Uniform Emergency Management Rate- Clutha	36.52	36.52
(00) Uniform Targeted Wilding Trees Rate - Clutha	2.42	-
(05) Dairy Environmental Monitoring Rate	560.32	560.32
(05) Rural Water Quality - Clutha	195.23	-
(20) Lower Clutha Flood Protection & Drainage B	9,909.64	3,681.25
(50) Biosecurity - Clutha	171.98	181.50
(50) Lower Clutha Flood Protection & Drainage E	15.94	18.81
(50) River & Waterway Management - Clutha	171.46	171.46
(NEW) Clutha Catchment Management	-	174.92
(NEW) Clutha Harbours Management	-	10.85
	11,882.33	5,569.49

CV \$2,110,000 – C Rural

LevyDescr	24/25 Pre RR	24/25 Post RR
(50) General Rate - Clutha	531.28	473.05
(50) Uniform General Charge - Clutha	76.03	72.48
(00) Uniform Emergency Management Rate- Clutha	36.52	36.52
(00) Uniform Targeted Wilding Trees Rate - Clutha	2.42	-
(05) Rural Water Quality - Clutha	139.64	-
(30) Lower Clutha Flood Protection & Drainage C	4,151.81	1,633.05
(40) Lower Clutha Flood Protection & Drainage D	1,616.65	1,013.44
(50) Biosecurity - Clutha	121.44	128.17
(50) River & Waterway Management - Clutha	122.64	122.64
(NEW) Clutha Catchment Management	-	125.11
(NEW) Clutha Harbours Management	-	10.85
	6,798.43	3,615.29

CV \$2,980,000 – D Rural

LevyDescr	24/25 Pre RR	24/25 Post RR
(50) General Rate - Clutha	750.34	668.10
(50) Uniform General Charge - Clutha	76.03	72.48
(00) Uniform Emergency Management Rate- Clutha	36.52	36.52
(00) Uniform Targeted Wilding Trees Rate - Clutha	2.42	-
(05) Dairy Environmental Monitoring Rate	560.32	560.32
(05) Rural Water Quality - Clutha	197.21	-
(30) Lower Clutha Flood Protection & Drainage C	7,614.83	2,995.17
(40) Lower Clutha Flood Protection & Drainage D	1,042.42	653.47
(50) Biosecurity - Clutha	168.21	177.52
(50) River & Waterway Management - Clutha	173.20	173.20
(NEW) Clutha Catchment Management	-	176.69
(NEW) Clutha Harbours Management	-	10.85
	10,621.52	5,524.33

CV \$2,920,000 – E Rural

LevyDescr	24/25 Pre RR	24/25 Post RR
(50) General Rate - Clutha	735.24	654.65
(50) Uniform General Charge - Clutha	76.03	72.48
(00) Uniform Emergency Management Rate- Clutha	36.52	36.52
(00) Uniform Targeted Wilding Trees Rate - Clutha	2.42	-
(05) Dairy Environmental Monitoring Rate	560.32	560.32
(05) Rural Water Quality - Clutha	193.24	-
(40) Lower Clutha Flood Protection & Drainage D	4,789.94	3,002.70
(50) Biosecurity - Clutha	169.72	179.12
(50) Lower Clutha Flood Protection & Drainage E	559.10	659.74
(50) River & Waterway Management - Clutha	169.72	169.72
(NEW) Clutha Catchment Management	-	173.14
(NEW) Clutha Harbours Management	-	10.85
	7,292.25	5,519.22

CV \$2,920,000 – F Rural

LevyDescr	24/25 Pre RR	24/25 Post RR
(50) General Rate - Clutha	735.24	654.65
(05) Rural Water Quality - Clutha	193.24	-
(50) Biosecurity - Clutha	199.14	210.16
(50) River & Waterway Management - Clutha	169.72	169.72
(60) Lower Clutha Flood Protection & Drainage F	365.15	3,662.44
(NEW) Clutha Catchment Management	-	173.14
	1,662.48	4,870.11

CV \$211,000 – U1 Rural

LevyDescr	24/25 Pre RR	24/25 Post RR
(50) General Rate - Clutha	53.13	47.31
(00) Lower Clutha Flood Protection & Drainage U2	86.66	37.20
(05) Rural Water Quality - Clutha	13.96	-
(10) Lower Clutha Flood Protection & Drainage U3	18.51	35.75
(50) Biosecurity - Clutha	15.09	15.92
(50) River & Waterway Management - Clutha	12.26	12.26
(90) Lower Clutha Flood Protection & Drainage U1	202.58	28.98
(NEW) Clutha Catchment Management	-	12.51
	402.19	189.93

CV \$355,000 – U2 Residential

LevyDescr	24/25 Pre RR	24/25 Post RR
(50) General Rate - Clutha	89.39	79.59
(50) Uniform General Charge - Clutha	76.03	72.48
(00) Lower Clutha Flood Protection & Drainage U2	399.54	171.49
(00) Uniform Emergency Management Rate- Clutha	36.52	36.52
(00) Uniform Targeted Wilding Trees Rate - Clutha	2.42	-
(50) Biosecurity - Clutha	7.02	7.40
(50) River & Waterway Management - Clutha	20.63	20.63
(NEW) Clutha Catchment Management	-	21.05
(NEW) Clutha Harbours Management	-	10.85
	631.54	420.00

CV \$240,000 – U3 Residential

LevyDescr	24/25 Pre RR	24/25 Post RR
(50) General Rate - Clutha	60.43	53.81
(50) Uniform General Charge - Clutha	76.03	72.48
(00) Uniform Emergency Management Rate- Clutha	36.52	36.52
(00) Uniform Targeted Wilding Trees Rate - Clutha	2.42	-
(10) Lower Clutha Flood Protection & Drainage U3	60.02	115.94
(50) Biosecurity - Clutha	3.02	3.18
(50) River & Waterway Management - Clutha	13.95	13.95
(NEW) Clutha Catchment Management	-	14.23
(NEW) Clutha Harbours Management	-	10.85
	252.39	320.95

CV \$290,000 – U4 Residential

LevyDescr	24/25 Pre RR	24/25 Post RR
(50) General Rate - Clutha	73.02	65.02
(50) Uniform General Charge - Clutha	76.03	72.48
(00) Uniform Emergency Management Rate- Clutha	36.52	36.52
(00) Uniform Targeted Wilding Trees Rate - Clutha	2.42	-
(20) Lower Clutha Flood Protection & Drainage U4	54.40	140.09
(50) Biosecurity - Clutha	8.98	9.47
(50) River & Waterway Management - Clutha	16.86	16.86
(NEW) Clutha Catchment Management	-	17.20
(NEW) Clutha Harbours Management	-	10.85
	268.21	368.47

Lower Taieri Flood

CV \$2,510,000 – WF1 Rural

LevyDescr	24/25 Pre RR	24/25 Post RR
(40) General Rate - Dunedin	530.98	451.02
(40) Uniform General Charge - Dunedin	76.03	72.48
(00) West Taieri Drainage - Uniform	1,395.25	4,549.73
(01) Lower Taieri Flood Protection WF1	5,034.20	3,512.48
(01) West Taieri Drainage - WD1	4,457.37	-
(04) Rural Water Quality - Dunedin	166.11	-
(40) Biosecurity - Dunedin	87.45	92.29
(40) River & Waterway Management - Dunedin	20.43	15.15
(90) Uniform Emergency Management Rate- Dunedin	36.52	36.52
(90) Uniform Targeted Wilding Trees Rate - Dunedin	2.42	-
(NEW) Dunedin Catchment Management	-	119.28
(NEW) Dunedin Harbours Management	-	10.85
(NEW) Dunedin Transport Fixed Charge	-	163.86
(NEW) Leith Flood Indirect	-	42.83
	11,806.75	9,066.47

CV \$1,060,000 – WF2 Lifestyle

LevyDescr	24/25 Pre RR	24/25 Post RR
(40) General Rate - Dunedin	224.24	190.47
(40) Uniform General Charge - Dunedin	76.03	72.48
(02) Lower Taieri Flood Protection WF2	1,257.97	1,483.36
(05) West Taieri Drainage - WD5	0.65	-
(40) Biosecurity - Dunedin	37.83	39.93
(40) River & Waterway Management - Dunedin	8.63	6.40
(90) Uniform Emergency Management Rate- Dunedin	36.52	36.52
(90) Uniform Targeted Wilding Trees Rate - Dunedin	2.42	-
(NEW) Dunedin Catchment Management	-	50.37
(NEW) Dunedin Harbours Management	-	10.85
(NEW) Dunedin Transport Fixed Charge	-	163.86
(NEW) Leith Flood Indirect	-	18.09
	1,644.27	2,072.31

CV \$540,000 – WF3 Residential

LevyDescr	24/25 Pre RR	24/25 Post RR
(40) General Rate - Dunedin	114.24	97.03
(40) Uniform General Charge - Dunedin	76.03	72.48
(03) Lower Taieri Flood Protection WF3	10.13	-
(29) Lower Taieri Flood Protection EF9	3.65	17.16
(40) Biosecurity - Dunedin	9.24	9.75
(40) River & Waterway Management - Dunedin	4.40	3.26
(90) Uniform Emergency Management Rate- Dunedin	36.52	36.52
(90) Uniform Targeted Wilding Trees Rate - Dunedin	2.42	-
(NEW) Dunedin Catchment Management	-	25.66
(NEW) Dunedin Harbours Management	-	10.85
(NEW) Dunedin Transport Fixed Charge	-	163.86
(NEW) Leith Flood Indirect	-	9.21
	256.61	445.78

CV \$502,000 – WF8 Rural

LevyDescr	24/25 Pre RR	24/25 Post RR
(40) General Rate - Dunedin	106.20	90.20
(40) Uniform General Charge - Dunedin	76.03	72.48
(00) West Taieri Drainage - Uniform	940.69	3,067.47
(03) West Taieri Drainage - WD3	2,242.34	-
(04) Rural Water Quality - Dunedin	33.22	-
(08) Lower Taieri Flood Protection WF8	70.76	-
(40) Biosecurity - Dunedin	29.46	31.09
(40) River & Waterway Management - Dunedin	4.09	3.03
(90) Uniform Emergency Management Rate- Dunedin	36.52	36.52
(90) Uniform Targeted Wilding Trees Rate - Dunedin	2.42	-
(NEW) Dunedin Catchment Management	-	23.86
(NEW) Dunedin Harbours Management	-	10.85
(NEW) Dunedin Transport Fixed Charge	-	163.86
(NEW) Leith Flood Indirect	-	8.57
	3,541.73	3,507.92

CV \$630,000 – WF9 Residential

LevyDescr	24/25 Pre RR	24/25 Post RR
(40) General Rate - Dunedin	133.27	113.20
(40) Uniform General Charge - Dunedin	76.03	72.48
(09) Lower Taieri Flood Protection WF9	1.02	-
(40) Biosecurity - Dunedin	6.82	7.20
(40) River & Waterway Management - Dunedin	5.13	3.80
(90) Uniform Emergency Management Rate- Dunedin	36.52	36.52
(90) Uniform Targeted Wilding Trees Rate - Dunedin	2.42	-
(NEW) Dunedin Catchment Management	-	29.94
(NEW) Dunedin Harbours Management	-	10.85
(NEW) Dunedin Transport Fixed Charge	-	163.86
(NEW) Leith Flood Indirect	-	10.75
	261.21	448.60

CV \$1,700,000 – EF1 Rural

LevyDescr	24/25 Pre RR	24/25 Post RR
(40) General Rate - Dunedin	359.63	305.47
(40) Uniform General Charge - Dunedin	76.03	72.48
(00) East Taieri Drainage - Uniform	972.98	3,807.30
(01) East Taieri Drainage - ED1	5,154.74	-
(04) Rural Water Quality - Dunedin	112.50	-
(21) Lower Taieri Flood Protection EF1	1,207.42	35.49
(40) Biosecurity - Dunedin	93.03	98.18
(40) River & Waterway Management - Dunedin	13.84	10.26
(90) Uniform Emergency Management Rate- Dunedin	36.52	36.52
(90) Uniform Targeted Wilding Trees Rate - Dunedin	2.42	-
(NEW) Dunedin Catchment Management	-	80.79
(NEW) Dunedin Harbours Management	-	10.85
(NEW) Dunedin Transport Fixed Charge	-	163.86
(NEW) Leith Flood Indirect	-	29.01
	8,029.10	4,650.20

CV \$2,065,000 – EF2 Rural

LevyDescr	24/25 Pre RR	24/25 Post RR
(40) General Rate - Dunedin	436.84	371.06
(40) Uniform General Charge - Dunedin	76.03	72.48
(00) East Taieri Drainage - Uniform	1,834.37	7,177.98
(02) East Taieri Drainage - ED2	8,733.75	-
(04) Rural Water Quality - Dunedin	136.66	-
(22) Lower Taieri Flood Protection EF2	2,334.95	65.62
(40) Biosecurity - Dunedin	103.57	109.31
(40) River & Waterway Management - Dunedin	16.81	12.46
(90) Uniform Emergency Management Rate- Dunedin	36.52	36.52
(90) Uniform Targeted Wilding Trees Rate - Dunedin	2.42	-
(NEW) Dunedin Catchment Management	-	98.13
(NEW) Dunedin Harbours Management	-	10.85
(NEW) Dunedin Transport Fixed Charge	-	163.86
(NEW) Leith Flood Indirect	-	35.23
	13,711.93	8,153.50

CV \$2,010,000 – EF3 Rural

LevyDescr	24/25 Pre RR	24/25 Post RR
(40) General Rate - Dunedin	425.21	361.18
(40) Uniform General Charge - Dunedin	76.03	72.48
(00) East Taieri Drainage - Uniform	2,022.06	7,912.42
(02) East Taieri Drainage - ED2	9,627.37	-
(04) Rural Water Quality - Dunedin	133.02	-
(22) Lower Taieri Flood Protection EF2	1,327.48	37.30
(23) Lower Taieri Flood Protection EF3	416.03	11.76
(40) Biosecurity - Dunedin	120.94	127.63
(40) River & Waterway Management - Dunedin	16.36	12.13
(90) Uniform Emergency Management Rate- Dunedin	36.52	36.52
(90) Uniform Targeted Wilding Trees Rate - Dunedin	2.42	-
(NEW) Dunedin Catchment Management	-	95.52
(NEW) Dunedin Harbours Management	-	10.85
(NEW) Dunedin Transport Fixed Charge	-	163.86
(NEW) Leith Flood Indirect	-	34.30
	14,203.43	8,875.94

CV \$1,590,000 – EF4 Rural

LevyDescr	24/25 Pre RR	24/25 Post RR
(40) General Rate - Dunedin	336.36	285.71
(40) Uniform General Charge - Dunedin	76.03	72.48
(00) East Taieri Drainage - Uniform	1,009.00	3,948.25
(04) East Taieri Drainage - ED4	3,006.93	-
(04) Rural Water Quality - Dunedin	105.23	-
(08) East Taieri Drainage - ED8	448.89	-
(24) Lower Taieri Flood Protection EF4	1,078.46	37.53
(27) Lower Taieri Flood Protection EF7	6.31	13.00
(40) Biosecurity - Dunedin	75.04	79.20
(40) River & Waterway Management - Dunedin	12.94	9.60
(90) Uniform Emergency Management Rate- Dunedin	36.52	36.52
(90) Uniform Targeted Wilding Trees Rate - Dunedin	2.42	-
(NEW) Dunedin Catchment Management	-	75.56
(NEW) Dunedin Harbours Management	-	10.85
(NEW) Dunedin Transport Fixed Charge	-	163.86
(NEW) Leith Flood Indirect	-	27.13
	6,194.11	4,759.66

CV \$1,350,000 – EF5 Lifestyle

LevyDescr	24/25 Pre RR	24/25 Post RR
(40) General Rate - Dunedin	285.59	242.58
(40) Uniform General Charge - Dunedin	76.03	72.48
(00) East Taieri Drainage - Uniform	66.96	262.01
(09) East Taieri Drainage - ED9	77.61	-
(25) Lower Taieri Flood Protection EF5	34.26	42.90
(40) Biosecurity - Dunedin	42.17	44.51
(40) River & Waterway Management - Dunedin	10.99	8.15
(90) Uniform Emergency Management Rate- Dunedin	36.52	36.52
(90) Uniform Targeted Wilding Trees Rate - Dunedin	2.42	-
(NEW) Dunedin Catchment Management	-	64.16
(NEW) Dunedin Harbours Management	-	10.85
(NEW) Dunedin Transport Fixed Charge	-	163.86
(NEW) Leith Flood Indirect	-	23.03
	632.54	971.03

CV \$1,960,000 – EF6 Rural

LevyDescr	24/25 Pre RR	24/25 Post RR
(40) General Rate - Dunedin	414.63	352.19
(40) Uniform General Charge - Dunedin	76.03	72.48
(04) Rural Water Quality - Dunedin	129.71	-
(26) Lower Taieri Flood Protection EF6	260.48	7.37
(40) Biosecurity - Dunedin	51.48	54.33
(40) River & Waterway Management - Dunedin	15.95	11.83
(90) Uniform Emergency Management Rate- Dunedin	36.52	36.52
(90) Uniform Targeted Wilding Trees Rate - Dunedin	2.42	-
(NEW) Dunedin Catchment Management	-	93.15
(NEW) Dunedin Harbours Management	-	10.85
(NEW) Dunedin Transport Fixed Charge	-	163.86
(NEW) Leith Flood Indirect	-	33.44
	987.21	836.01

CV \$1,200,000 – EF7 Lifestyle

LevyDescr	24/25 Pre RR	24/25 Post RR
(40) General Rate - Dunedin	253.86	215.63
(40) Uniform General Charge - Dunedin	76.03	72.48
(00) East Taieri Drainage - Uniform	83.70	327.51
(04) Rural Water Quality - Dunedin	79.42	-
(08) East Taieri Drainage - ED8	111.88	-
(27) Lower Taieri Flood Protection EF7	18.50	38.13
(40) Biosecurity - Dunedin	40.31	42.54
(40) River & Waterway Management - Dunedin	9.77	7.24
(90) Uniform Emergency Management Rate- Dunedin	36.52	36.52
(90) Uniform Targeted Wilding Trees Rate - Dunedin	2.42	-
(NEW) Dunedin Catchment Management	-	57.03
(NEW) Dunedin Harbours Management	-	10.85
(NEW) Dunedin Transport Fixed Charge	-	163.86
(NEW) Leith Flood Indirect	-	20.47
	712.39	992.26

CV \$700,000 – EF8 Residential

LevyDescr	24/25 Pre RR	24/25 Post RR
(40) General Rate - Dunedin	148.08	125.78
(40) Uniform General Charge - Dunedin	76.03	72.48
(20) Dunedin Transport Class B - Dunedin	200.70	31.57
(28) Lower Taieri Flood Protection EF8	10.20	22.24
(40) Biosecurity - Dunedin	21.71	22.91
(40) River & Waterway Management - Dunedin	5.70	4.22
(90) Uniform Emergency Management Rate- Dunedin	36.52	36.52
(90) Uniform Targeted Wilding Trees Rate - Dunedin	2.42	-
(NEW) Dunedin Catchment Management	-	33.27
(NEW) Dunedin Harbours Management	-	10.85
(NEW) Dunedin Transport Fixed Charge	-	163.86
(NEW) Leith Flood Indirect	-	11.94
	501.35	535.64

CV \$1,230,000 – EF9 Lifestyle

LevyDescr	24/25 Pre RR	24/25 Post RR
(40) General Rate - Dunedin	260.20	221.02
(40) Uniform General Charge - Dunedin	76.03	72.48
(00) East Taieri Drainage - Uniform	50.22	196.52
(10) East Taieri Drainage - ED10	51.74	-
(20) Dunedin Transport Class B - Dunedin	352.65	55.48
(29) Lower Taieri Flood Protection EF9	8.31	39.08
(40) Biosecurity - Dunedin	39.69	41.89
(40) River & Waterway Management - Dunedin	10.01	7.42
(90) Uniform Emergency Management Rate- Dunedin	36.52	36.52
(90) Uniform Targeted Wilding Trees Rate - Dunedin	2.42	-
(NEW) Dunedin Catchment Management	-	58.45
(NEW) Dunedin Harbours Management	-	10.85
(NEW) Dunedin Transport Fixed Charge	-	163.86
(NEW) Leith Flood Indirect	-	20.99
	887.80	924.55

CV \$1,750,000 – EF10 Lifestyle

LevyDescr	24/25 Pre RR	24/25 Post RR
(40) General Rate - Dunedin	370.21	314.46
(40) Uniform General Charge - Dunedin	76.03	72.48
(00) East Taieri Drainage - Uniform	200.88	786.04
(04) Rural Water Quality - Dunedin	115.81	-
(08) East Taieri Drainage - ED8	268.51	-
(30) Lower Taieri Flood Protection EF10	14.72	55.61
(40) Biosecurity - Dunedin	48.99	51.71
(40) River & Waterway Management - Dunedin	14.24	10.56
(90) Uniform Emergency Management Rate- Dunedin	36.52	36.52
(90) Uniform Targeted Wilding Trees Rate - Dunedin	2.42	-
(NEW) Dunedin Catchment Management	-	83.17
(NEW) Dunedin Harbours Management	-	10.85
(NEW) Dunedin Transport Fixed Charge	-	163.86
(NEW) Leith Flood Indirect	-	29.86
	1,148.32	1,615.10

CV \$3,210,000 – EF12 Rural

LevyDescr	24/25 Pre RR	24/25 Post RR
(40) General Rate - Dunedin	679.07	576.80
(40) Uniform General Charge - Dunedin	76.03	72.48
(00) East Taieri Drainage - Uniform	2,679.84	10,486.34
(01) East Taieri Drainage - ED1	14,197.57	-
(04) Rural Water Quality - Dunedin	212.44	-
(21) Lower Taieri Flood Protection EF1	1,513.33	44.49
(32) Lower Taieri Flood Protection EF12	2,355.76	56.40
(40) Biosecurity - Dunedin	137.06	144.65
(40) River & Waterway Management - Dunedin	26.13	19.37
(90) Uniform Emergency Management Rate- Dunedin	36.52	36.52
(90) Uniform Targeted Wilding Trees Rate - Dunedin	2.42	-
(NEW) Dunedin Catchment Management	-	152.55
(NEW) Dunedin Harbours Management	-	10.85
(NEW) Dunedin Transport Fixed Charge	-	163.86
(NEW) Leith Flood Indirect	-	54.77
	21,916.15	11,819.07

CV \$2,025,000 – EF13 Rural

LevyDescr	24/25 Pre RR	24/25 Post RR
(40) General Rate - Dunedin	428.38	363.87
(40) Uniform General Charge - Dunedin	76.03	72.48
(00) East Taieri Drainage - Uniform	2,378.17	9,305.90
(01) East Taieri Drainage - ED1	12,599.37	-
(04) Rural Water Quality - Dunedin	134.01	-
(21) Lower Taieri Flood Protection EF1	635.60	18.68
(33) Lower Taieri Flood Protection EF13	1,907.17	45.66
(40) Biosecurity - Dunedin	97.99	103.41
(40) River & Waterway Management - Dunedin	16.48	12.22
(90) Uniform Emergency Management Rate- Dunedin	36.52	36.52
(90) Uniform Targeted Wilding Trees Rate - Dunedin	2.42	-
(NEW) Dunedin Catchment Management	-	96.23
(NEW) Dunedin Harbours Management	-	10.85
(NEW) Dunedin Transport Fixed Charge	-	163.86
(NEW) Leith Flood Indirect	-	34.55
	18,312.14	10,264.24

East Taieri Drainage (Land Area)

Area 61.17 Ha – ED1 Rural

LevyDescr	24/25 Pre RR	24/25 Post RR
(40) General Rate - Dunedin	338.47	287.50
(40) Uniform General Charge - Dunedin	76.03	72.48
(00) East Taieri Drainage - Uniform	2,530.14	9,900.55
(01) East Taieri Drainage - ED1	13,404.47	-
(04) Rural Water Quality - Dunedin	105.89	-
(21) Lower Taieri Flood Protection EF1	1,729.52	50.84
(40) Biosecurity - Dunedin	96.75	102.11
(40) River & Waterway Management - Dunedin	13.02	9.66
(90) Uniform Emergency Management Rate- Dunedin	36.52	36.52
(90) Uniform Targeted Wilding Trees Rate - Dunedin	2.42	-
(NEW) Dunedin Catchment Management	-	76.04
(NEW) Dunedin Harbours Management	-	10.85
(NEW) Dunedin Transport Fixed Charge	-	163.86
(NEW) Leith Flood Indirect	-	27.30
	18,333.23	10,737.70

Area 38.2 Ha – ED2 Rural

LevyDescr	24/25 Pre RR	24/25 Post RR
(40) General Rate - Dunedin	406.17	345.00
(40) Uniform General Charge - Dunedin	76.03	72.48
(00) East Taieri Drainage - Uniform	1,580.14	6,183.17
(02) East Taieri Drainage - ED2	7,523.32	-
(04) Rural Water Quality - Dunedin	127.06	-
(22) Lower Taieri Flood Protection EF2	1,326.34	37.27
(40) Biosecurity - Dunedin	115.35	121.74
(40) River & Waterway Management - Dunedin	15.63	11.59
(90) Uniform Emergency Management Rate- Dunedin	36.52	36.52
(90) Uniform Targeted Wilding Trees Rate - Dunedin	2.42	-
(NEW) Dunedin Catchment Management	-	91.24
(NEW) Dunedin Harbours Management	-	10.85
(NEW) Dunedin Transport Fixed Charge	-	163.86
(NEW) Leith Flood Indirect	-	32.76
	11,208.99	7,106.48

Area 6 Ha – ED4 Lifestyle

LevyDescr	24/25 Pre RR	24/25 Post RR
(40) General Rate - Dunedin	401.94	341.41
(40) Uniform General Charge - Dunedin	76.03	72.48
(00) East Taieri Drainage - Uniform	248.19	971.18
(04) East Taieri Drainage - ED4	1,108.61	-
(04) Rural Water Quality - Dunedin	125.74	-
(24) Lower Taieri Flood Protection EF4	1,735.03	60.37
(40) Biosecurity - Dunedin	43.41	45.82
(40) River & Waterway Management - Dunedin	15.46	11.47
(90) Uniform Emergency Management Rate- Dunedin	36.52	36.52
(90) Uniform Targeted Wilding Trees Rate - Dunedin	2.42	-
(NEW) Dunedin Catchment Management	-	90.29
(NEW) Dunedin Harbours Management	-	10.85
(NEW) Dunedin Transport Fixed Charge	-	163.86
(NEW) Leith Flood Indirect	-	32.42
	3,793.35	1,836.66

Area 5.39 Ha – ED5 Lifestyle

LevyDescr	24/25 Pre RR	24/25 Post RR
(40) General Rate - Dunedin	452.71	384.54
(40) Uniform General Charge - Dunedin	76.03	72.48
(00) East Taieri Drainage - Uniform	223.12	873.09
(04) Rural Water Quality - Dunedin	141.62	-
(05) East Taieri Drainage - ED5	449.60	-
(40) Biosecurity - Dunedin	66.36	70.03
(40) River & Waterway Management - Dunedin	17.42	12.92
(90) Uniform Emergency Management Rate- Dunedin	36.52	36.52
(90) Uniform Targeted Wilding Trees Rate - Dunedin	2.42	-
(NEW) Dunedin Catchment Management	-	101.70
(NEW) Dunedin Harbours Management	-	10.85
(NEW) Dunedin Transport Fixed Charge	-	163.86
(NEW) Leith Flood Indirect	-	36.51
	1,465.79	1,762.49

Area 0.05 Ha – ED7 Residential

LevyDescr	24/25 Pre RR	24/25 Post RR
(40) General Rate - Dunedin	118.47	100.63
(40) Uniform General Charge - Dunedin	76.03	72.48
(07) East Taieri Drainage - ED7	14.61	-
(20) Dunedin Transport Class B - Dunedin	160.56	25.26
(28) Lower Taieri Flood Protection EF8	8.16	17.79
(40) Biosecurity - Dunedin	24.50	25.85
(40) River & Waterway Management - Dunedin	4.56	3.38
(90) Uniform Emergency Management Rate- Dunedin	36.52	36.52
(90) Uniform Targeted Wilding Trees Rate - Dunedin	2.42	-
(NEW) Dunedin Catchment Management	-	26.61
(NEW) Dunedin Harbours Management	-	10.85
(NEW) Dunedin Transport Fixed Charge	-	163.86
(NEW) Leith Flood Indirect	-	9.55
	445.82	492.78

Area 3.18 Ha – ED8 Industrial

LevyDescr	24/25 Pre RR	24/25 Post RR
(40) General Rate - Dunedin	537.33	456.41
(40) Uniform General Charge - Dunedin	76.03	72.48
(00) East Taieri Drainage - Uniform	131.45	514.35
(08) East Taieri Drainage - ED8	175.70	-
(30) Lower Taieri Flood Protection EF10	21.36	80.71
(40) Biosecurity - Dunedin	157.53	166.25
(40) River & Waterway Management - Dunedin	20.67	15.33
(90) Uniform Emergency Management Rate- Dunedin	36.52	36.52
(90) Uniform Targeted Wilding Trees Rate - Dunedin	2.42	-
(NEW) Dunedin Catchment Management	-	120.71
(NEW) Dunedin Harbours Management	-	10.85
(NEW) Dunedin Transport Fixed Charge	-	163.86
(NEW) Leith Flood Indirect	-	43.34
	1,159.00	1,680.80

Area 0.82 Ha – ED9 Residential

LevyDescr	24/25 Pre RR	24/25 Post RR
(40) General Rate - Dunedin	313.09	265.94
(40) Uniform General Charge - Dunedin	76.03	72.48
(00) East Taieri Drainage - Uniform	34.29	134.17
(09) East Taieri Drainage - ED9	39.74	-
(20) Dunedin Transport Class B - Dunedin	424.33	66.75
(40) Biosecurity - Dunedin	76.28	80.51
(40) River & Waterway Management - Dunedin	12.05	8.93
(90) Uniform Emergency Management Rate- Dunedin	36.52	36.52
(90) Uniform Targeted Wilding Trees Rate - Dunedin	2.42	-
(NEW) Dunedin Catchment Management	-	70.33
(NEW) Dunedin Harbours Management	-	10.85
(NEW) Dunedin Transport Fixed Charge	-	163.86
(NEW) Leith Flood Indirect	-	25.25
	1,014.74	935.59

Area 0.35 Ha – ED10 Residential

LevyDescr	24/25 Pre RR	24/25 Post RR
(40) General Rate - Dunedin	175.58	149.14
(40) Uniform General Charge - Dunedin	76.03	72.48
(00) East Taieri Drainage - Uniform	14.66	57.38
(10) East Taieri Drainage - ED10	15.11	-
(20) Dunedin Transport Class B - Dunedin	237.97	37.44
(40) Biosecurity - Dunedin	37.21	39.27
(40) River & Waterway Management - Dunedin	6.76	5.01
(90) Uniform Emergency Management Rate- Dunedin	36.52	36.52
(90) Uniform Targeted Wilding Trees Rate - Dunedin	2.42	-
(NEW) Dunedin Catchment Management	-	39.44
(NEW) Dunedin Harbours Management	-	10.85
(NEW) Dunedin Transport Fixed Charge	-	163.86
(NEW) Leith Flood Indirect	-	14.16
	602.26	625.55

West Taieri Drainage (Land Area)

Area 48.9 Ha – WD1 Rural

LevyDescr	24/25 Pre RR	24/25 Post RR
(40) General Rate - Dunedin	492.52	418.68
(40) Uniform General Charge - Dunedin	76.23	72.48
(00) West Taieri Drainage - Uniform	1,964.38	6,405.58
(01) Lower Taieri Flood Protection WF1	4,673.19	3,260.59
(01) West Taieri Drainage - WD1	6,352.03	-
(04) Rural Water Quality - Dunedin	154.20	-
(40) Biosecurity - Dunedin	118.45	125.01
(40) River & Waterway Management - Dunedin	18.96	14.06
(90) Uniform Emergency Management Rate- Dunedin	36.52	36.52
(90) Uniform Targeted Wilding Trees Rate - Dunedin	2.42	-
(NEW) Dunedin Catchment Management	-	110.73
(NEW) Dunedin Harbours Management	-	10.85
(NEW) Dunedin Transport Fixed Charge	-	163.86
(NEW) Leith Flood Indirect	-	39.76
	13,888.90	10,658.11

Area 40.9 Ha – WD2 Rural

LevyDescr	24/25 Pre RR	24/25 Post RR
(40) General Rate - Dunedin	359.63	305.47
(40) Uniform General Charge - Dunedin	76.03	72.48
(00) West Taieri Drainage - Uniform	1,660.95	5,416.12
(02) Lower Taieri Flood Protection WF2	2,015.12	2,376.17
(02) West Taieri Drainage - WD2	1,457.63	-
(04) Rural Water Quality - Dunedin	112.50	-
(40) Biosecurity - Dunedin	99.85	105.38
(40) River & Waterway Management - Dunedin	13.84	10.26
(90) Uniform Emergency Management Rate- Dunedin	36.52	36.52
(90) Uniform Targeted Wilding Trees Rate - Dunedin	2.42	-
(NEW) Dunedin Catchment Management	-	80.79
(NEW) Dunedin Harbours Management	-	10.85
(NEW) Dunedin Transport Fixed Charge	-	163.86
(NEW) Leith Flood Indirect	-	29.01
	5,834.48	8,606.90

Area 24.2 Ha – WD3 Rural

LevyDescr	24/25 Pre RR	24/25 Post RR
(40) General Rate - Dunedin	194.62	165.31
(40) Uniform General Charge - Dunedin	76.03	72.48
(00) West Taieri Drainage - Uniform	983.64	3,207.51
(01) West Taieri Drainage - WD1	72.65	-
(03) West Taieri Drainage - WD3	2,290.49	-
(04) Rural Water Quality - Dunedin	60.89	-
(08) Lower Taieri Flood Protection WF8	92.05	-
(40) Biosecurity - Dunedin	55.20	58.25
(40) River & Waterway Management - Dunedin	7.49	5.55
(90) Uniform Emergency Management Rate- Dunedin	36.52	36.52
(90) Uniform Targeted Wilding Trees Rate - Dunedin	2.42	-
(NEW) Dunedin Catchment Management	-	43.72
(NEW) Dunedin Harbours Management	-	10.85
(NEW) Dunedin Transport Fixed Charge	-	163.86
(NEW) Leith Flood Indirect	-	15.70
	3,871.98	3,779.75

Area 8 Ha – WD4 Rural

LevyDescr	24/25 Pre RR	24/25 Post RR
(40) General Rate - Dunedin	69.02	58.67
(40) Uniform General Charge - Dunedin	76.23	72.48
(00) West Taieri Drainage - Uniform	322.53	1,051.73
(03) Lower Taieri Flood Protection WF3	6.06	-
(04) Rural Water Quality - Dunedin	21.61	-
(04) West Taieri Drainage - WD4	1,042.93	-
(40) Biosecurity - Dunedin	19.85	20.94
(40) River & Waterway Management - Dunedin	2.66	1.97
(90) Uniform Emergency Management Rate- Dunedin	36.52	36.52
(90) Uniform Targeted Wilding Trees Rate - Dunedin	2.42	-
(NEW) Dunedin Catchment Management	-	15.52
(NEW) Dunedin Harbours Management	-	10.85
(NEW) Dunedin Transport Fixed Charge	-	163.86
(NEW) Leith Flood Indirect	-	5.57
	1,599.81	1,438.10

Area 1.9 Ha – WD5 Lifestyle

LevyDescr	24/25 Pre RR	24/25 Post RR
(40) General Rate - Dunedin	194.62	165.31
(40) Uniform General Charge - Dunedin	76.03	72.48
(02) Lower Taieri Flood Protection WF2	1,091.82	1,287.44
(05) West Taieri Drainage - WD5	1.03	-
(40) Biosecurity - Dunedin	30.39	32.07
(40) River & Waterway Management - Dunedin	7.49	5.55
(90) Uniform Emergency Management Rate- Dunedin	36.52	36.52
(90) Uniform Targeted Wilding Trees Rate - Dunedin	2.42	-
(NEW) Dunedin Catchment Management	-	43.72
(NEW) Dunedin Harbours Management	-	10.85
(NEW) Dunedin Transport Fixed Charge	-	163.86
(NEW) Leith Flood Indirect	-	15.70
	1,440.31	1,833.50

Tokomairiro Drainage

CV \$12,760,000 – A Rural

LevyDescr	24/25 Pre RR	24/25 Post RR
(50) General Rate - Clutha	3,212.88	2,860.74
(50) Uniform General Charge - Clutha	76.03	72.48
(00) Uniform Emergency Management Rate- Clutha	36.52	36.52
(00) Uniform Targeted Wilding Trees Rate - Clutha	2.42	-
(05) Dairy Environmental Monitoring Rate	560.32	560.32
(05) Rural Water Quality - Clutha	844.45	-
(30) Tokomairiro Drainage A	580.42	121.00
(40) Tokomairiro Drainage B	2,862.01	795.56
(50) Biosecurity - Clutha	736.20	776.96
(50) River & Waterway Management - Clutha	741.64	741.64
(50) Tokomairiro Drainage C	2,333.28	810.73
(60) Tokomairiro Drainage D	832.48	385.68
(70) Tokomairiro Drainage E	681.76	568.53
(80) Tokomairiro Drainage F	62.56	130.42
(NEW) Clutha Catchment Management	-	756.58
(NEW) Clutha Harbours Management	-	10.85
	13,562.96	8,628.01

CV \$580,000 – B Lifestyle

LevyDescr	24/25 Pre RR	24/25 Post RR
(50) General Rate - Clutha	146.04	130.03
(50) Uniform General Charge - Clutha	76.03	72.48
(00) Uniform Emergency Management Rate- Clutha	36.52	36.52
(00) Uniform Targeted Wilding Trees Rate - Clutha	2.42	-
(05) Rural Water Quality - Clutha	38.38	-
(40) Tokomairiro Drainage B	400.76	111.40
(50) Biosecurity - Clutha	13.58	14.33
(50) River & Waterway Management - Clutha	33.71	33.71
(NEW) Clutha Catchment Management	-	34.39
(NEW) Clutha Harbours Management	-	10.85
	747.44	443.70

CV \$2,605,000 – C Rural

LevyDescr	24/25 Pre RR	24/25 Post RR
(50) General Rate - Clutha	655.92	584.03
(50) Uniform General Charge - Clutha	76.03	72.48
(00) Uniform Emergency Management Rate- Clutha	36.52	36.52
(00) Uniform Targeted Wilding Trees Rate - Clutha	2.42	-
(05) Rural Water Quality - Clutha	172.40	-
(30) Tokomairiro Drainage A	1.84	0.38
(40) Tokomairiro Drainage B	1.38	0.38
(50) Biosecurity - Clutha	173.49	183.10
(50) River & Waterway Management - Clutha	151.41	151.41
(50) Tokomairiro Drainage C	467.10	162.30
(60) Tokomairiro Drainage D	4.56	2.11
(70) Tokomairiro Drainage E	324.76	270.82
(80) Tokomairiro Drainage F	30.86	64.34
(NEW) Clutha Catchment Management	-	154.46
(NEW) Clutha Harbours Management	-	10.85
	2,098.68	1,693.18

CV \$1,270,000 – D Rural

LevyDescr	24/25 Pre RR	24/25 Post RR
(50) General Rate - Clutha	319.78	284.73
(50) Uniform General Charge - Clutha	76.03	72.48
(00) Uniform Emergency Management Rate- Clutha	36.52	36.52
(00) Uniform Targeted Wilding Trees Rate - Clutha	2.42	-
(05) Rural Water Quality - Clutha	84.05	-
(50) Biosecurity - Clutha	74.68	78.81
(50) River & Waterway Management - Clutha	73.82	73.82
(60) Tokomairiro Drainage D	365.66	169.41
(70) Tokomairiro Drainage E	89.37	74.52
(NEW) Clutha Catchment Management	-	75.30
(NEW) Clutha Harbours Management	-	10.85
	1,122.31	876.43

CV \$405,000 – E Residential

LevyDescr	24/25 Pre RR	24/25 Post RR
(50) General Rate - Clutha	101.98	90.80
(50) Uniform General Charge - Clutha	76.03	72.48
(00) Uniform Emergency Management Rate- Clutha	36.52	36.52
(00) Uniform Targeted Wilding Trees Rate - Clutha	2.42	-
(50) Biosecurity - Clutha	8.37	8.84
(50) River & Waterway Management - Clutha	23.54	23.54
(70) Tokomairiro Drainage E	93.28	77.79
(NEW) Clutha Catchment Management	-	24.01
(NEW) Clutha Harbours Management	-	10.85
	342.13	344.82

CV \$4,250,000 – F Rural

LevyDescr	24/25 Pre RR	24/25 Post RR
(50) General Rate - Clutha	1,070.12	952.83
(50) Uniform General Charge - Clutha	76.03	72.48
(00) Uniform Emergency Management Rate- Clutha	36.52	36.52
(00) Uniform Targeted Wilding Trees Rate - Clutha	2.42	-
(05) Rural Water Quality - Clutha	281.26	-
(40) Tokomairiro Drainage B	1,486.28	413.14
(50) Biosecurity - Clutha	271.55	286.59
(50) River & Waterway Management - Clutha	247.02	247.02
(60) Tokomairiro Drainage D	129.35	59.93
(70) Tokomairiro Drainage E	192.09	160.19
(80) Tokomairiro Drainage F	87.80	183.04
(NEW) Clutha Catchment Management	-	252.00
(NEW) Clutha Harbours Management	-	10.85
	3,880.44	2,674.57

CV \$425,000 – U1 Residential

LevyDescr	24/25 Pre RR	24/25 Post RR
(50) General Rate - Clutha	107.01	95.28
(50) Uniform General Charge - Clutha	76.03	72.48
(00) Uniform Emergency Management Rate- Clutha	36.52	36.52
(00) Uniform Targeted Wilding Trees Rate - Clutha	2.42	-
(10) Tokomairiro Drainage U1	58.73	47.10
(50) Biosecurity - Clutha	8.67	9.15
(50) River & Waterway Management - Clutha	24.70	24.70
(NEW) Clutha Catchment Management	-	25.20
(NEW) Clutha Harbours Management	-	10.85
	314.09	321.28

Leith Flood

CV \$670,000 – Direct Residential

LevyDescr	24/25 Pre RR	24/25 Post RR
(40) General Rate - Dunedin	141.74	120.39
(40) Uniform General Charge - Dunedin	76.03	72.48
(20) Dunedin Transport Class B - Dunedin	192.10	30.22
(40) Biosecurity - Dunedin	16.74	17.67
(40) River & Waterway Management - Dunedin	5.45	4.04
(60) Leith Flood Direct	363.91	278.24
(90) Uniform Emergency Management Rate- Dunedin	36.52	36.52
(90) Uniform Targeted Wilding Trees Rate - Dunedin	2.42	-
(NEW) Dunedin Catchment Management	-	31.84
(NEW) Dunedin Harbours Management	-	10.85
(NEW) Dunedin Transport Fixed Charge	-	163.86
	834.91	766.11

CV \$670,000 – Indirect Median (all Dunedin)

LevyDescr	24/25 Pre RR	24/25 Post RR
(40) General Rate - Dunedin	141.74	120.39
(40) Uniform General Charge - Dunedin	76.03	72.48
(20) Dunedin Transport Class B - Dunedin	192.10	30.22
(40) Biosecurity - Dunedin	17.37	18.33
(40) River & Waterway Management - Dunedin	5.45	4.04
(70) Leith Flood Indirect	19.07	11.43
(90) Uniform Emergency Management Rate- Dunedin	36.52	36.52
(90) Uniform Targeted Wilding Trees Rate - Dunedin	2.42	-
(NEW) Dunedin Catchment Management	-	31.84
(NEW) Dunedin Harbours Management	-	10.85
(NEW) Dunedin Transport Fixed Charge	-	163.86
	490.69	499.96

CV \$249,700,000 – Stadium

LevyDescr	24/25 Pre RR	24/25 Post RR
(40) General Rate - Dunedin	52,823.24	44,868.59
(40) Uniform General Charge - Dunedin	76.03	72.48
(20) Dunedin Transport Class B - Dunedin	71,591.77	11,262.46
(40) Biosecurity - Dunedin	1,584.57	1,672.31
(40) River & Waterway Management - Dunedin	2,032.27	1,506.95
(61) Leith Flood Direct Stadium	32,863.52	103,696.86
(90) Uniform Emergency Management Rate- Dunedin	36.52	36.52
(90) Uniform Targeted Wilding Trees Rate - Dunedin	2.42	-
(NEW) Dunedin Catchment Management	-	11,866.49
(NEW) Dunedin Harbours Management	-	10.85
(NEW) Dunedin Transport Fixed Charge	-	163.86
	161,010.32	175,157.36

Selected Properties

CV \$335,010,000 – DCC 3 Waters (Utility)

LevyDescr	24/25 Pre RR	24/25 Post RR
(40) General Rate - Dunedin	70,870.29	60,197.94
(40) Uniform General Charge - Dunedin	76.03	72.48
(40) Biosecurity - Dunedin	-	-
(40) River & Waterway Management - Dunedin	2,726.59	2,021.81
(90) Uniform Emergency Management Rate- Dunedin	36.52	36.52
(90) Uniform Targeted Wilding Trees Rate - Dunedin	2.42	-
(NEW) Dunedin Catchment Management	-	15,920.67
(NEW) Dunedin Harbours Management	-	10.85
(NEW) Dunedin Transport Fixed Charge	-	163.86
(NEW) Leith Flood Indirect	-	5,716.02
	73,711.85	84,140.14

CV \$417,440,000 – DCC 3 Waters (Utility)

LevyDescr	24/25 Pre RR	24/25 Post RR
(40) General Rate - Dunedin	88,308.10	75,009.79
(40) Uniform General Charge - Dunedin	76.03	72.48
(40) Biosecurity - Dunedin	-	-
(40) River & Waterway Management - Dunedin	3,397.48	2,519.28
(90) Uniform Emergency Management Rate- Dunedin	36.52	36.52
(90) Uniform Targeted Wilding Trees Rate - Dunedin	2.42	-
(NEW) Dunedin Catchment Management	-	19,837.99
(NEW) Dunedin Harbours Management	-	10.85
(NEW) Dunedin Transport Fixed Charge	-	163.86
(NEW) Leith Flood Indirect	-	7,122.46
	91,820.54	104,773.21

CV \$178,729,000 – DCC 3 Waters (Utility)

LevyDescr	24/25 Pre RR	24/25 Post RR
(40) General Rate - Dunedin	37,809.55	32,115.81
(40) Uniform General Charge - Dunedin	76.03	72.48
(40) Biosecurity - Dunedin	-	-
(40) River & Waterway Management - Dunedin	1,454.65	1,078.64
(90) Uniform Emergency Management Rate- Dunedin	36.52	36.52
(90) Uniform Targeted Wilding Trees Rate - Dunedin	2.42	-
(NEW) Dunedin Catchment Management	-	8,493.73
(NEW) Dunedin Harbours Management	-	10.85
(NEW) Dunedin Transport Fixed Charge	-	163.86
(NEW) Leith Flood Indirect	-	3,049.51
	39,379.16	45,021.40

CV \$38,680,000 – Dunedin Airport

LevyDescr	24/25 Pre RR	24/25 Post RR
(40) General Rate - Dunedin	8,182.63	6,950.41
(40) Uniform General Charge - Dunedin	76.03	72.48
(00) West Taieri Drainage - Uniform	728.17	2,374.48
(01) Lower Taieri Flood Protection WF1	77,578.90	54,128.58
(01) West Taieri Drainage - WD1	2,326.28	-
(40) Biosecurity - Dunedin	311.95	329.22
(40) River & Waterway Management - Dunedin	314.81	233.44
(90) Uniform Emergency Management Rate- Dunedin	36.52	36.52
(90) Uniform Targeted Wilding Trees Rate - Dunedin	2.42	-
(NEW) Dunedin Catchment Management	-	1,838.19
(NEW) Dunedin Harbours Management	-	10.85
(NEW) Dunedin Transport Fixed Charge	-	163.86
(NEW) Leith Flood Indirect	-	659.97
	89,557.71	66,797.99

CV \$249,700,000 – Dunedin Stadium

LevyDescr	24/25 Pre RR	24/25 Post RR
(40) General Rate - Dunedin	52,823.24	44,868.59
(40) Uniform General Charge - Dunedin	76.03	72.48
(20) Dunedin Transport Class B - Dunedin	71,591.77	11,262.46
(40) Biosecurity - Dunedin	1,584.57	1,672.31
(40) River & Waterway Management - Dunedin	2,032.27	1,506.95
(61) Leith Flood Direct Stadium	32,863.52	103,696.86
(90) Uniform Emergency Management Rate- Dunedin	36.52	36.52
(90) Uniform Targeted Wilding Trees Rate - Dunedin	2.42	-
(NEW) Dunedin Catchment Management	-	11,866.49
(NEW) Dunedin Harbours Management	-	10.85
(NEW) Dunedin Transport Fixed Charge	-	163.86
	161,010.32	175,157.36

CV \$709,200,000 – Contact Energy

LevyDescr	24/25 Pre RR	24/25 Post RR
(20) General Rate - Central Otago	137,340.11	127,436.14
(20) Uniform General Charge - Central Otago	76.03	72.48
(20) River & Waterway Management - Central Otago	17,154.61	22,841.36
(20) Biosecurity - Central Otago	172.41	181.96
(70) Uniform Emergency Management Rate- Central Otago	36.52	36.52
(70) Uniform Targeted Wilding Trees Rate - Central Otago	2.42	-
(NEW) Central Otago Catchment Management	-	33,703.29
(NEW) Central Otago Harbours Management	-	10.85
	154,782.10	184,282.59

CV \$346,950,000 – Contact Energy

LevyDescr	24/25 Pre RR	24/25 Post RR
(20) General Rate - Central Otago	67,188.60	62,343.44
(20) Uniform General Charge - Central Otago	76.03	72.48
(20) River & Waterway Management - Central Otago	8,392.26	11,174.30
(20) Biosecurity - Central Otago	170.55	179.99
(70) Uniform Emergency Management Rate- Central Otago	36.52	36.52
(70) Uniform Targeted Wilding Trees Rate - Central Otago	2.42	-
(NEW) Central Otago Catchment Management	-	16,488.09
(NEW) Central Otago Harbours Management	-	10.85
	75,866.37	90,305.67

Rate Type / Zone Analysis

The following pages show the impact of rate type / benefit zone changes

Flood and drainage schemes

- summary of benefit zone movements

Public Transport

- summary of move to uniform rate

Lower Clutha Flood & Drainage

LOWER CLUTHA	A	B	C	D	E	F	U1	U2	U3	U4	TOTAL
Rates Change	Total \$	Total \$	Total \$	Total \$	Total \$	Total \$	Total \$	Total \$	Total \$	Total \$	Total \$
more than -\$5,000	(42,357)	(81,438)	(186,952)	-	-	-	-	(15,417)	-	-	(326,165)
-\$1,000 to -\$5,000	(2,530)	(50,254)	(42,159)	(9,386)	-	-	(1,808)	(15,205)	-	-	(121,344)
-\$500 to -\$1,000	-	(1,831)	(6,823)	(8,294)	-	-	(1,641)	(10,593)	-	-	(29,182)
-\$250 to -\$500	(290)	(840)	(4,800)	(5,087)	-	-	(619)	(36,373)	-	-	(48,010)
-\$100 to -\$250	-	(276)	(1,453)	(3,442)	-	-	(275)	(80,646)	-	-	(86,091)
-\$50 to -\$100	-	(142)	(383)	(146)	-	-	(162)	(6,558)	-	-	(7,391)
\$0 to -\$50	-	(86)	(82)	(205)	-	-	(129)	(2,424)	-	-	(2,926)
\$0 to \$50	-	-	-	-	513	1,063	-	-	8,950	3,184	13,710
\$50 to \$100	-	-	-	-	1,111	2,551	-	-	9,391	56,554	69,607
\$100 to \$250	-	-	-	-	3,344	17,771	-	-	1,618	65,238	87,970
\$250 to \$500	-	-	-	-	2,308	88,503	-	-	-	3,320	94,131
\$500 to \$1,000	-	-	-	-	2,519	92,024	-	-	-	1,256	95,798
\$1,000 to \$5,000	-	-	-	-	2,067	116,303	-	-	-	1,814	120,184
more than \$5,000	-	-	-	-	-	83,246	-	-	-	-	83,246
	(45,177)	(134,868)	(242,652)	(26,559)	11,862	401,461	(4,634)	(167,218)	19,959	131,366	(56,461)
Rates Change	Rate Units	Rate Units	Rate Units	Rate Units	Rate Units	Rate Units	Rate Units	Rate Units	Rate Units	Rate Units	Rate Units
more than -\$5,000	2	9	21	-	-	-	-	1	-	-	33
-\$1,000 to -\$5,000	1	19	17	7	-	-	1	7	-	-	52
-\$500 to -\$1,000	-	3	10	12	-	-	2	16	-	-	43
-\$250 to -\$500	1	2	13	14	-	-	2	116	-	-	148
-\$100 to -\$250	-	2	8	20	-	-	2	466	-	-	498
-\$50 to -\$100	-	2	5	2	-	-	2	86	-	-	97
\$0 to -\$50	-	4	11	12	-	-	5	143	-	-	175
\$0 to \$50	-	-	-	-	28	53	-	1	367	156	605
\$50 to \$100	-	-	-	-	14	33	-	-	144	679	870
\$100 to \$250	-	-	-	-	21	100	-	-	13	533	667
\$250 to \$500	-	-	-	-	7	242	-	-	-	10	259
\$500 to \$1,000	-	-	-	-	3	138	-	-	-	2	143
\$1,000 to \$5,000	-	-	-	-	1	58	-	-	-	1	60
more than \$5,000	-	-	-	-	-	11	-	-	-	-	11
	4	41	85	67	74	635	14	836	524	1,381	3,661
Rates Change	Avg Rates	Avg Rates	Avg Rates	Avg Rates	Avg Rates	Avg Rates	Avg Rates	Avg Rates	Avg Rates	Avg Rates	Avg Rates
more than -\$5,000	-21,178.49	-9,048.67	-8,902.49	-	-	-	-	-15,417.39	-	-	-9,883.78
-\$1,000 to -\$5,000	-2,529.97	-2,644.96	-2,479.96	-1,340.91	-	-	-1,808.31	-2,172.20	-	-	-2,333.53
-\$500 to -\$1,000	-	-610.46	-682.31	-691.18	-	-	-820.25	-662.06	-	-	-678.66
-\$250 to -\$500	-289.97	-420.18	-369.20	-363.36	-	-	-309.58	-313.56	-	-	-324.39
-\$100 to -\$250	-	-137.94	-181.60	-172.08	-	-	-137.40	-173.06	-	-	-172.87
-\$50 to -\$100	-	-71.09	-76.61	-72.79	-	-	-81.01	-76.26	-	-	-76.20
\$0 to -\$50	-	-21.43	-7.45	-17.05	-	-	-25.87	-16.95	-	-	-16.72
\$0 to \$50	-	-	-	-	18.32	20.06	-	0.00	24.39	20.41	22.66
\$50 to \$100	-	-	-	-	79.39	77.30	-	-	65.21	83.29	80.01
\$100 to \$250	-	-	-	-	159.23	177.71	-	-	124.44	122.40	131.89
\$250 to \$500	-	-	-	-	329.71	365.71	-	-	-	331.98	363.44
\$500 to \$1,000	-	-	-	-	839.55	666.84	-	-	-	627.91	669.92
\$1,000 to \$5,000	-	-	-	-	2,066.93	2,005.22	-	-	-	1,814.30	2,003.07
more than \$5,000	-	-	-	-	-	7,567.86	-	-	-	-	7,567.86
	-11,294.23	-3,289.46	-2,854.73	-396.41	160.29	632.22	-331.01	-200.02	38.09	95.12	-15.42

Lower Taieri Flood

LOWER TAIERI	WF1	WF2	WF3	WF4	WF5	WF6	WF7	WF8	WF9	EF1	EF2	EF3	EF4	EF5	EF6	EF7	EF8	EF9	EF10	EF12	EF13	TOTAL
Rates Change	Total \$	Total \$	Total \$	Total \$	Total \$	Total \$	Total \$	Total \$	Total \$	Total \$	Total \$	Total \$	Total \$	Total \$	Total \$	Total \$	Total \$	Total \$	Total \$	Total \$	Total \$	Total \$
more than -\$5,000	(28,628)	-	-	-	-	-	-	-	-	-	(11,305)	-	-	-	-	-	-	-	-	-	-	(39,933)
-\$1,000 to -\$5,000	(99,124)	-	-	-	-	-	-	-	-	(17,154)	(20,970)	-	(10,558)	-	-	-	-	-	-	(2,299)	(3,286)	(153,393)
-\$500 to -\$1,000	(13,522)	-	-	-	-	-	-	-	-	(5,026)	(1,615)	-	-	-	-	-	-	-	-	-	-	(20,163)
-\$250 to -\$500	(6,953)	-	-	-	-	-	-	-	-	(2,588)	(1,229)	(716)	(1,538)	-	(981)	-	-	-	-	-	(286)	(14,290)
-\$100 to -\$250	(1,125)	-	-	-	-	-	-	(585)	-	(648)	(303)	-	(510)	-	(363)	-	-	-	-	-	-	(3,536)
-\$50 to -\$100	(137)	-	-	(96)	-	-	-	(332)	-	(97)	-	-	-	-	-	-	-	-	-	-	-	(662)
\$0 to -\$50	(210)	-	(275)	(127)	(3)	(17)	(1)	(121)	(3)	(5)	-	-	(63)	-	(27)	-	-	-	-	-	-	(853)
\$0 to \$50	-	231	-	-	-	-	-	-	-	-	-	-	-	625	-	906	51,210	15,613	2,294	-	-	70,878
\$50 to \$100	-	4,058	-	-	-	-	-	-	-	-	-	-	-	-	-	-	634	861	1,126	-	-	6,679
\$100 to \$250	-	61,939	-	-	-	-	-	-	-	-	-	-	-	124	-	-	914	-	889	-	-	63,865
\$250 to \$500	-	22,635	-	-	-	-	-	-	-	-	-	-	-	-	-	-	591	-	343	-	-	23,569
\$500 to \$1,000	-	7,898	-	-	-	-	-	-	-	-	-	-	-	-	-	-	-	-	-	-	-	7,898
\$1,000 to \$5,000	-	13,597	-	-	-	-	-	-	-	-	-	-	-	-	-	-	-	-	-	1,079	-	14,676
more than \$5,000	-	-	-	-	-	-	-	-	-	-	-	-	-	-	-	-	-	-	-	-	-	-
	(149,699)	110,357	(275)	(223)	(3)	(17)	(1)	(1,039)	(3)	(25,518)	(35,423)	(716)	(12,669)	749	(1,371)	906	53,349	16,474	5,732	(2,299)	(3,573)	(45,263)
Rates Change	Rate Units	Rate Units	Rate Units	Rate Units	Rate Units	Rate Units	Rate Units	Rate Units	Rate Units	Rate Units	Rate Units	Rate Units	Rate Units	Rate Units	Rate Units	Rate Units	Rate Units	Rate Units	Rate Units	Rate Units	Rate Units	Rate Units
more than -\$5,000	2	-	-	-	-	-	-	-	-	2	-	-	8	-	-	-	-	-	-	-	-	4
-\$1,000 to -\$5,000	45	-	-	-	-	-	-	-	-	9	10	-	8	-	-	-	-	-	-	1	2	75
-\$500 to -\$1,000	21	-	-	-	-	-	-	-	-	7	2	-	-	-	-	-	-	-	-	-	-	30
-\$250 to -\$500	19	-	-	-	-	-	-	-	-	7	3	2	4	-	3	-	-	-	-	-	-	39
-\$100 to -\$250	6	-	-	-	-	-	-	4	-	3	2	-	4	-	2	-	-	-	-	-	-	21
-\$50 to -\$100	2	-	-	1	-	-	-	4	-	1	-	-	-	-	-	-	-	-	-	-	-	8
\$0 to -\$50	10	-	26	3	2	3	2	6	15	1	-	-	2	-	1	-	-	-	-	-	-	71
\$0 to \$50	-	14	-	-	-	-	-	-	-	-	-	-	-	84	-	53	4,514	639	137	-	-	5,441
\$50 to \$100	-	55	-	-	-	-	-	-	-	-	-	-	-	-	-	-	9	13	17	-	-	94
\$100 to \$250	-	379	-	-	-	-	-	-	-	-	-	-	-	1	-	-	6	-	5	-	-	391
\$250 to \$500	-	74	-	-	-	-	-	-	-	-	-	-	-	-	-	-	2	-	1	-	-	77
\$500 to \$1,000	-	11	-	-	-	-	-	-	-	-	-	-	-	-	-	-	-	-	-	-	-	11
\$1,000 to \$5,000	-	9	-	-	-	-	-	-	-	-	-	-	-	-	-	-	-	-	-	1	-	10
more than \$5,000	-	-	-	-	-	-	-	-	-	-	-	-	-	-	-	-	-	-	-	-	-	-
	105	542	26	4	2	3	2	14	15	28	19	2	18	85	6	53	4,531	652	161	1	3	6,272
Rates Change	Avg Rates	Avg Rates	Avg Rates	Avg Rates	Avg Rates	Avg Rates	Avg Rates	Avg Rates	Avg Rates	Avg Rates	Avg Rates	Avg Rates	Avg Rates	Avg Rates	Avg Rates	Avg Rates	Avg Rates	Avg Rates	Avg Rates	Avg Rates	Avg Rates	Avg Rates
more than -\$5,000	-14,313.91	-	-	-	-	-	-	-	-	-	-5,652.47	-	-	-	-	-	-	-	-	-	-	-9,983.19
-\$1,000 to -\$5,000	-2,202.76	-	-	-	-	-	-	-	-	-1,906.00	-2,097.02	-	-1,319.78	-	-	-	-	-	-	-2,299.36	-1,643.23	-2,045.23
-\$500 to -\$1,000	-643.91	-	-	-	-	-	-	-	-	-717.93	-807.73	-	-	-	-	-	-	-	-	-	-	-672.10
-\$250 to -\$500	-365.93	-	-	-	-	-	-	-	-	-369.76	-409.54	-357.84	-384.51	-	-326.93	-	-	-	-	-	-286.29	-366.42
-\$100 to -\$250	-187.54	-	-	-	-	-	-	-146.25	-	-216.13	-151.66	-	-127.58	-	-181.65	-	-	-	-	-	-	-168.36
-\$50 to -\$100	-68.51	-	-	-95.90	-	-	-	-83.03	-	-96.52	-	-	-	-	-	-	-	-	-	-	-	-82.69
\$0 to -\$50	-21.04	-	-10.56	-42.27	-1.65	-5.60	-0.58	-20.24	-0.23	-5.25	-	-	-31.29	-	-27.27	-	-	-	-	-	-	-12.01
\$0 to \$50	-	16.49	-	-	-	-	-	-	-	-	-	-	-	7.44	-	17.10	11.34	24.43	16.74	-	-	13.03
\$50 to \$100	-	73.78	-	-	-	-	-	-	-	-	-	-	-	-	-	-	70.48	66.23	66.23	-	-	71.05
\$100 to \$250	-	163.43	-	-	-	-	-	-	-	-	-	-	-	123.52	-	-	152.31	-	177.81	-	-	163.34
\$250 to \$500	-	305.88	-	-	-	-	-	-	-	-	-	-	-	-	-	-	295.48	-	343.46	-	-	306.10
\$500 to \$1,000	-	717.98	-	-	-	-	-	-	-	-	-	-	-	-	-	-	-	-	-	-	-	717.98
\$1,000 to \$5,000	-	1,510.73	-	-	-	-	-	-	-	-	-	-	-	-	-	-	-	-	-	1,079.44	-	1,467.60
more than \$5,000	-	-	-	-	-	-	-	-	-	-	-	-	-	-	-	-	-	-	-	-	-	-
	-1,425.71	203.61	-10.56	-55.68	-1.65	-5.60	-0.58	-74.18	-0.23	-911.36	-1,864.35	-357.84	-703.85	8.81	-228.56	17.10	11.77	25.27	35.60	-2,299.36	-1,190.91	-7.22

West Taieri Drainage

WEST TAIERI	WD1	WD2	WD3	WD4	WD5	TOTAL
Rates Change	Total \$	Total \$	Total \$	Total \$	Total \$	Total \$
more than -\$5,000	(72,537)	-	-	-	-	(72,537)
-\$1,000 to -\$5,000	(109,820)	-	-	(3,370)	-	(113,190)
-\$500 to -\$1,000	(8,510)	-	(1,934)	(577)	-	(11,021)
-\$250 to -\$500	(2,176)	-	(1,777)	(1,007)	-	(4,960)
-\$100 to -\$250	(1,286)	-	(277)	-	-	(1,563)
-\$50 to -\$100	(539)	-	-	-	-	(539)
\$0 to -\$50	(552)	-	(45)	(18)	-	(615)
\$0 to \$50	-	888	-	-	4,580	5,468
\$50 to \$100	-	766	-	-	386	1,152
\$100 to \$250	-	3,334	-	-	2,189	5,523
\$250 to \$500	-	3,883	-	-	3,019	6,901
\$500 to \$1,000	-	4,417	-	-	2,084	6,500
\$1,000 to \$5,000	-	73,388	-	-	13,301	86,689
more than \$5,000	-	36,987	-	-	33,943	70,930
	(195,419)	123,663	(4,034)	(4,972)	59,502	(21,260)
Rates Change	Rate Units	Rate Units	Rate Units	Rate Units	Rate Units	Rate Units
more than -\$5,000	10	-	-	-	-	10
-\$1,000 to -\$5,000	39	-	-	2	-	41
-\$500 to -\$1,000	12	-	3	1	-	16
-\$250 to -\$500	7	-	5	3	-	15
-\$100 to -\$250	8	-	2	-	-	10
-\$50 to -\$100	8	-	-	-	-	8
\$0 to -\$50	24	-	4	1	-	29
\$0 to \$50	-	102	-	-	330	432
\$50 to \$100	-	10	-	-	6	16
\$100 to \$250	-	20	-	-	13	33
\$250 to \$500	-	11	-	-	8	19
\$500 to \$1,000	-	6	-	-	3	9
\$1,000 to \$5,000	-	28	-	-	8	36
more than \$5,000	-	4	-	-	3	7
	108	181	14	7	371	681
Rates Change	Avg Rates	Avg Rates	Avg Rates	Avg Rates	Avg Rates	Avg Rates
more than -\$5,000	-7,253.68	-	-	-	-	-7,253.68
-\$1,000 to -\$5,000	-2,815.90	-	-	-1,685.11	-	-2,760.74
-\$500 to -\$1,000	-709.14	-	-644.83	-576.89	-	-688.82
-\$250 to -\$500	-310.85	-	-355.42	-335.74	-	-330.69
-\$100 to -\$250	-160.70	-	-138.53	-	-	-156.27
-\$50 to -\$100	-67.33	-	-	-	-	-67.33
\$0 to -\$50	-23.00	-	-11.23	-17.96	-	-21.20
\$0 to \$50	-	8.70	-	-	13.88	12.66
\$50 to \$100	-	76.60	-	-	64.37	72.01
\$100 to \$250	-	166.69	-	-	168.38	167.36
\$250 to \$500	-	352.96	-	-	377.35	363.23
\$500 to \$1,000	-	736.13	-	-	694.57	722.28
\$1,000 to \$5,000	-	2,621.01	-	-	1,662.60	2,408.03
more than \$5,000	-	9,246.83	-	-	11,314.25	10,132.87
	-1,809.43	683.22	-288.11	-710.33	160.38	-31.22

East Taieri Drainage

EAST TAIERI	ED1	ED2	ED4	ED5	ED7	ED8	ED9	ED10	TOTAL
Rates Change	Total \$	Total \$	Total \$	Total \$	Total \$	Total \$	Total \$	Total \$	Total \$
more than -\$5,000	(73,971)	(23,885)	-	-	-	-	-	-	(97,857)
-\$1,000 to -\$5,000	(22,143)	(15,966)	(3,985)	-	-	-	-	-	(42,094)
-\$500 to -\$1,000	(2,379)	(3,424)	(575)	-	-	-	-	-	(6,377)
-\$250 to -\$500	(1,725)	(924)	(3,040)	-	-	-	-	-	(5,689)
-\$100 to -\$250	(465)	(279)	(753)	-	(172)	-	-	-	(1,670)
-\$50 to -\$100	(88)	(163)	(71)	-	(172)	-	-	-	(494)
\$0 to -\$50	-	(32)	(25)	-	(11,234)	-	-	-	(11,291)
\$0 to \$50	-	-	-	386	-	1,883	2,910	2,975	8,152
\$50 to \$100	-	-	-	6,815	-	2,329	1,245	1,090	11,479
\$100 to \$250	-	-	-	4,597	-	3,441	2,572	6,307	16,917
\$250 to \$500	-	-	-	5,425	-	8,928	4,911	4,793	24,058
\$500 to \$1,000	-	-	-	9,088	-	14,084	8,788	2,493	34,454
\$1,000 to \$5,000	-	-	-	3,750	-	20,012	24,861	-	48,623
more than \$5,000	-	-	-	-	-	-	-	5,195	5,195
	(100,771)	(44,674)	(8,449)	30,061	(11,578)	50,677	45,287	22,854	(16,593)
Rates Change	Rate Units	Rate Units	Rate Units	Rate Units	Rate Units	Rate Units	Rate Units	Rate Units	Rate Units
more than -\$5,000	9	3	-	-	-	-	-	-	12
-\$1,000 to -\$5,000	10	5	3	-	-	-	-	-	18
-\$500 to -\$1,000	3	4	1	-	-	-	-	-	8
-\$250 to -\$500	4	2	7	-	-	-	-	-	13
-\$100 to -\$250	2	2	5	-	1	-	-	-	10
-\$50 to -\$100	1	2	1	-	2	-	-	-	6
\$0 to -\$50	-	2	1	-	1,543	-	-	-	1,546
\$0 to \$50	-	-	-	21	20	127	261	454	883
\$50 to \$100	-	-	-	99	-	30	18	14	161
\$100 to \$250	-	-	-	29	-	20	17	37	103
\$250 to \$500	-	-	-	14	-	24	15	14	67
\$500 to \$1,000	-	-	-	13	-	19	12	4	48
\$1,000 to \$5,000	-	-	-	2	-	12	14	-	28
more than \$5,000	-	-	-	-	-	-	-	1	1
	29	20	18	178	1,566	232	337	524	2,904
Rates Change	Avg Rates	Avg Rates	Avg Rates	Avg Rates	Avg Rates	Avg Rates	Avg Rates	Avg Rates	Avg Rates
more than -\$5,000	-8,219.04	-7,961.83	-	-	-	-	-	-	-8,154.74
-\$1,000 to -\$5,000	-2,214.32	-3,193.11	-1,328.35	-	-	-	-	-	-2,338.55
-\$500 to -\$1,000	-792.89	-855.97	-574.61	-	-	-	-	-	-797.15
-\$250 to -\$500	-431.15	-462.06	-434.32	-	-	-	-	-	-437.61
-\$100 to -\$250	-232.67	-139.52	-150.65	-	-172.31	-	-	-	-166.99
-\$50 to -\$100	-88.06	-81.60	-70.98	-	-85.96	-	-	-	-82.36
\$0 to -\$50	-	-16.11	-24.62	-	-7.28	-	-	-	-7.30
\$0 to \$50	-	-	-	18.36	0.00	14.82	11.15	6.55	9.23
\$50 to \$100	-	-	-	68.84	-	77.63	69.15	77.87	71.30
\$100 to \$250	-	-	-	158.52	-	172.03	151.29	170.46	164.24
\$250 to \$500	-	-	-	387.52	-	372.00	327.43	342.38	359.08
\$500 to \$1,000	-	-	-	699.08	-	741.29	732.34	623.35	717.79
\$1,000 to \$5,000	-	-	-	1,874.90	-	1,667.67	1,775.77	-	1,736.52
more than \$5,000	-	-	-	-	-	-	-	5,195.23	5,195.23
	-3,474.87	-2,233.68	-469.38	168.88	-7.39	218.43	134.38	43.61	-5.71

Tokomairiro

TOKOMAIRIRO	A	B	C	D	E	F	U1	TOTAL
Rates Change	Total \$	Total \$	Total \$	Total \$	Total \$	Total \$	Total \$	Total \$
more than -\$5,000	-	-	-	-	-	-	-	-
-\$1,000 to -\$5,000	(3,649)	(6,402)	(4,799)	(5,339)	-	-	(3,126)	(23,316)
-\$500 to -\$1,000	(1,351)	(2,833)	(3,023)	(3,154)	-	-	-	(10,361)
-\$250 to -\$500	(1,676)	(2,163)	(3,922)	(5,013)	-	-	-	(12,774)
-\$100 to -\$250	(601)	(2,226)	(3,838)	(4,454)	(369)	-	-	(11,486)
-\$50 to -\$100	(215)	(490)	(422)	(1,999)	(835)	-	-	(3,960)
\$0 to -\$50	(170)	(126)	(232)	(830)	(2,515)	-	(8,093)	(11,966)
\$0 to \$50	-	-	-	-	-	5,349	-	5,349
\$50 to \$100	-	-	-	-	-	4,484	-	4,484
\$100 to \$250	-	-	-	-	-	5,314	-	5,314
\$250 to \$500	-	-	-	-	-	10,283	-	10,283
\$500 to \$1,000	-	-	-	-	-	5,743	-	5,743
\$1,000 to \$5,000	-	-	-	-	-	2,141	-	2,141
more than \$5,000	-	-	-	-	-	-	-	-
	(7,662)	(14,240)	(16,235)	(20,789)	(3,718)	33,314	(11,220)	(40,550)
Rates Change	Rate Units	Rate Units	Rate Units	Rate Units	Rate Units	Rate Units	Rate Units	Rate Units
more than -\$5,000	-	-	-	-	-	-	-	-
-\$1,000 to -\$5,000	3	4	4	2	-	-	1	14
-\$500 to -\$1,000	2	4	4	5	-	-	-	15
-\$250 to -\$500	4	6	12	15	-	-	-	37
-\$100 to -\$250	4	14	23	29	3	-	-	73
-\$50 to -\$100	3	7	6	28	12	-	-	56
\$0 to -\$50	8	8	8	41	222	-	1,003	1,290
\$0 to \$50	-	-	-	1	1	281	-	283
\$50 to \$100	-	-	-	-	-	61	-	61
\$100 to \$250	-	-	-	-	-	33	-	33
\$250 to \$500	-	-	-	-	-	29	-	29
\$500 to \$1,000	-	-	-	-	-	9	-	9
\$1,000 to \$5,000	-	-	-	-	-	2	-	2
more than \$5,000	-	-	-	-	-	-	-	-
	24	43	57	121	238	415	1,004	1,902
Rates Change	Avg Rates	Avg Rates	Avg Rates	Avg Rates	Avg Rates	Avg Rates	Avg Rates	Avg Rates
more than -\$5,000	-	-	-	-	-	-	-	-
-\$1,000 to -\$5,000	-1,216.35	-1,600.60	-1,199.71	-2,669.48	-	-	-3,126.43	-1,665.41
-\$500 to -\$1,000	-675.63	-708.19	-755.68	-630.82	-	-	-	-690.72
-\$250 to -\$500	-418.94	-360.54	-326.86	-334.20	-	-	-	-345.25
-\$100 to -\$250	-150.22	-158.97	-166.85	-153.58	-122.86	-	-	-157.35
-\$50 to -\$100	-71.71	-69.99	-70.28	-71.39	-69.56	-	-	-70.72
\$0 to -\$50	-21.28	-15.71	-28.97	-20.25	-11.33	-	-8.07	-9.28
\$0 to \$50	-	-	-	0.00	0.00	19.04	-	18.90
\$50 to \$100	-	-	-	-	-	73.50	-	73.50
\$100 to \$250	-	-	-	-	-	161.04	-	161.04
\$250 to \$500	-	-	-	-	-	354.60	-	354.60
\$500 to \$1,000	-	-	-	-	-	638.07	-	638.07
\$1,000 to \$5,000	-	-	-	-	-	1,070.27	-	1,070.27
more than \$5,000	-	-	-	-	-	-	-	-
	-319.26	-331.15	-284.82	-171.81	-15.62	80.27	-11.17	-21.32

Leith Flood

LEITH	Direct	Stadium	Indirect	TOTAL
Rates Change	Total \$	Total \$	Total \$	Total \$
more than -\$5,000	-	-	-	-
-\$1,000 to -\$5,000	(41,489)	-	-	(41,489)
-\$500 to -\$1,000	(14,543)	-	(2,693)	(17,236)
-\$250 to -\$500	(21,974)	-	(4,727)	(26,701)
-\$100 to -\$250	(55,061)	-	(8,675)	(63,735)
-\$50 to -\$100	(52,006)	-	(8,577)	(60,583)
\$0 to -\$50	(4,725)	-	(311,822)	(316,547)
\$0 to \$50	-	-	167,548	167,548
\$50 to \$100	-	-	10,901	10,901
\$100 to \$250	-	-	12,860	12,860
\$250 to \$500	-	-	4,152	4,152
\$500 to \$1,000	-	-	2,566	2,566
\$1,000 to \$5,000	-	1,572	8,235	9,806
more than \$5,000	-	70,833	12,838	83,672
	(189,799)	72,405	(117,394)	(234,787)
Rates Change	Rate Units	Rate Units	Rate Units	Rate Units
more than -\$5,000	-	-	-	-
-\$1,000 to -\$5,000	22	-	-	22
-\$500 to -\$1,000	23	-	4	27
-\$250 to -\$500	64	-	15	79
-\$100 to -\$250	405	-	61	466
-\$50 to -\$100	663	-	130	793
\$0 to -\$50	139	-	40,514	40,653
\$0 to \$50	-	-	13,430	13,430
\$50 to \$100	-	-	154	154
\$100 to \$250	-	-	89	89
\$250 to \$500	-	-	13	13
\$500 to \$1,000	-	-	4	4
\$1,000 to \$5,000	-	1	3	4
more than \$5,000	-	1	2	3
	1,316	2	54,419	55,737
Rates Change	Avg Rates	Avg Rates	Avg Rates	Avg Rates
more than -\$5,000	-	-	-	-
-\$1,000 to -\$5,000	-1,885.88	-	-	-1,885.88
-\$500 to -\$1,000	-632.30	-	-673.23	-638.36
-\$250 to -\$500	-343.35	-	-315.11	-337.99
-\$100 to -\$250	-135.95	-	-142.21	-136.77
-\$50 to -\$100	-78.44	-	-65.98	-76.40
\$0 to -\$50	-33.99	-	-7.70	-7.79
\$0 to \$50	-	-	12.48	12.48
\$50 to \$100	-	-	70.78	70.78
\$100 to \$250	-	-	144.50	144.50
\$250 to \$500	-	-	319.42	319.42
\$500 to \$1,000	-	-	641.45	641.45
\$1,000 to \$5,000	-	1,571.55	2,744.97	2,451.61
more than \$5,000	-	70,833.34	6,419.24	27,890.60
	-144.22	36,202.45	-2.16	-4.21

Dunedin Transport

TRANSPORT DUNEDIN	Dunedin Class A	Dunedin Class B	Waitaki Class B	Dunedin Fixed New	Waitaki Fixed New	TOTAL
Rates Change	Total \$	Total \$	Total \$	Total \$	Total \$	Total \$
more than -\$5,000	(1,328,611)	(123,244)	-	-	-	(1,451,855)
-\$1,000 to -\$5,000	(1,218,457)	(198,104)	-	-	-	(1,416,561)
-\$500 to -\$1,000	(257,264)	(269,117)	-	-	-	(526,381)
-\$250 to -\$500	(113,158)	(1,250,577)	(1,517)	-	-	(1,365,252)
-\$100 to -\$250	(17,490)	(5,894,870)	(9,903)	-	-	(5,922,263)
-\$50 to -\$100	(1,573)	(410,618)	(24,150)	-	-	(436,341)
\$0 to -\$50	(255)	(22,557)	(7,143)	-	-	(29,955)
\$0 to \$50	-	-	-	-	-	-
\$50 to \$100	-	-	-	-	-	-
\$100 to \$250	-	-	-	8,821,882	97,007	8,918,888
\$250 to \$500	-	-	-	-	-	-
\$500 to \$1,000	-	-	-	-	-	-
\$1,000 to \$5,000	-	-	-	-	-	-
more than \$5,000	-	-	-	-	-	-
	(2,936,807)	(8,169,087)	(42,714)	8,821,882	97,007	(2,229,720)
Rates Change	Rate Units	Rate Units	Rate Units	Rate Units	Rate Units	Rate Units
more than -\$5,000	113	8	-	-	-	121
-\$1,000 to -\$5,000	570	113	-	-	-	683
-\$500 to -\$1,000	352	414	-	-	-	766
-\$250 to -\$500	301	4,015	4	-	-	4,320
-\$100 to -\$250	93	38,435	75	-	-	38,603
-\$50 to -\$100	21	4,907	330	-	-	5,258
\$0 to -\$50	20	1,155	279	-	-	1,454
\$0 to \$50	3	23	-	3	-	29
\$50 to \$100	-	-	-	-	-	-
\$100 to \$250	-	-	-	53,837	592	54,429
\$250 to \$500	-	-	-	-	-	-
\$500 to \$1,000	-	-	-	-	-	-
\$1,000 to \$5,000	-	-	-	-	-	-
more than \$5,000	-	-	-	-	-	-
	1,473	49,070	688	53,840	592	105,663
Rates Change	Avg Rates	Avg Rates	Avg Rates	Avg Rates	Avg Rates	Avg Rates
more than -\$5,000	-11,757.62	-15,405.48	-	-	-	-11,998.80
-\$1,000 to -\$5,000	-2,137.64	-1,753.14	-	-	-	-2,074.03
-\$500 to -\$1,000	-730.86	-650.04	-	-	-	-687.18
-\$250 to -\$500	-375.94	-311.48	-379.32	-	-	-316.03
-\$100 to -\$250	-188.06	-153.37	-132.05	-	-	-153.41
-\$50 to -\$100	-74.90	-83.68	-73.18	-	-	-82.99
\$0 to -\$50	-12.74	-19.53	-25.60	-	-	-20.60
\$0 to \$50	0.00	0.00	-	0.00	-	0.00
\$50 to \$100	-	-	-	-	-	-
\$100 to \$250	-	-	-	163.86	163.86	163.86
\$250 to \$500	-	-	-	-	-	-
\$500 to \$1,000	-	-	-	-	-	-
\$1,000 to \$5,000	-	-	-	-	-	-
more than \$5,000	-	-	-	-	-	-
	-1,993.76	-166.48	-62.08	163.85	163.86	-21.10

Queenstown Transport

TRANSPORT QUEENSTOWN	Whakatipu Class A	Whakatipu Class B	Qtn Lakes Fixed New	TOTAL
Rates Change	Total \$	Total \$	Total \$	Total \$
more than -\$5,000	(615,918)	(100,631)	-	(716,549)
-\$1,000 to -\$5,000	(397,636)	(329,398)	-	(727,035)
-\$500 to -\$1,000	(79,831)	(541,856)	-	(621,687)
-\$250 to -\$500	(51,875)	(862,176)	-	(914,051)
-\$100 to -\$250	(37,998)	(1,374,201)	-	(1,412,199)
-\$50 to -\$100	(13,995)	(218,802)	-	(232,797)
\$0 to -\$50	(366)	(43,478)	-	(43,844)
\$0 to \$50	-	-	-	-
\$50 to \$100	-	-	-	-
\$100 to \$250	-	-	3,757,070	3,757,070
\$250 to \$500	-	-	-	-
\$500 to \$1,000	-	-	-	-
\$1,000 to \$5,000	-	-	-	-
more than \$5,000	-	-	-	-
	(1,197,619)	(3,470,543)	3,757,070	(911,092)
Rates Change	Rate Units	Rate Units	Rate Units	Rate Units
more than -\$5,000	51	11	-	62
-\$1,000 to -\$5,000	183	205	-	388
-\$500 to -\$1,000	112	812	-	924
-\$250 to -\$500	155	2,537	-	2,692
-\$100 to -\$250	231	8,630	-	8,861
-\$50 to -\$100	195	2,875	-	3,070
\$0 to -\$50	19	1,279	-	1,298
\$0 to \$50	4	25	7	36
\$50 to \$100	-	-	-	-
\$100 to \$250	-	-	29,217	29,217
\$250 to \$500	-	-	-	-
\$500 to \$1,000	-	-	-	-
\$1,000 to \$5,000	-	-	-	-
more than \$5,000	-	-	-	-
	950	16,374	29,224	46,548
Rates Change	Avg Rates	Avg Rates	Avg Rates	Avg Rates
more than -\$5,000	-12,076.82	-9,148.28	-	-11,557.24
-\$1,000 to -\$5,000	-2,172.88	-1,606.82	-	-1,873.80
-\$500 to -\$1,000	-712.78	-667.31	-	-672.82
-\$250 to -\$500	-334.68	-339.84	-	-339.54
-\$100 to -\$250	-164.49	-159.24	-	-159.37
-\$50 to -\$100	-71.77	-76.11	-	-75.83
\$0 to -\$50	-19.26	-33.99	-	-33.78
\$0 to \$50	0.00	0.00	0.00	0.00
\$50 to \$100	-	-	-	-
\$100 to \$250	-	-	128.59	128.59
\$250 to \$500	-	-	-	-
\$500 to \$1,000	-	-	-	-
\$1,000 to \$5,000	-	-	-	-
more than \$5,000	-	-	-	-
	-1,260.65	-211.95	128.56	-19.57