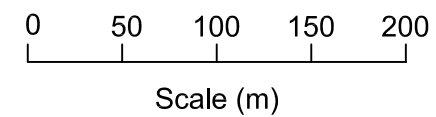


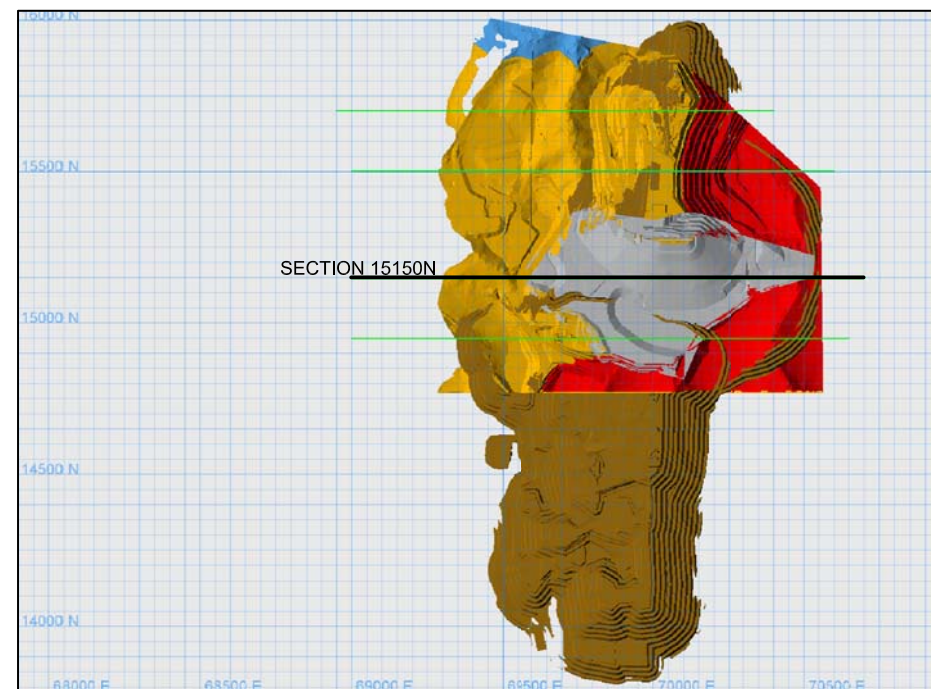
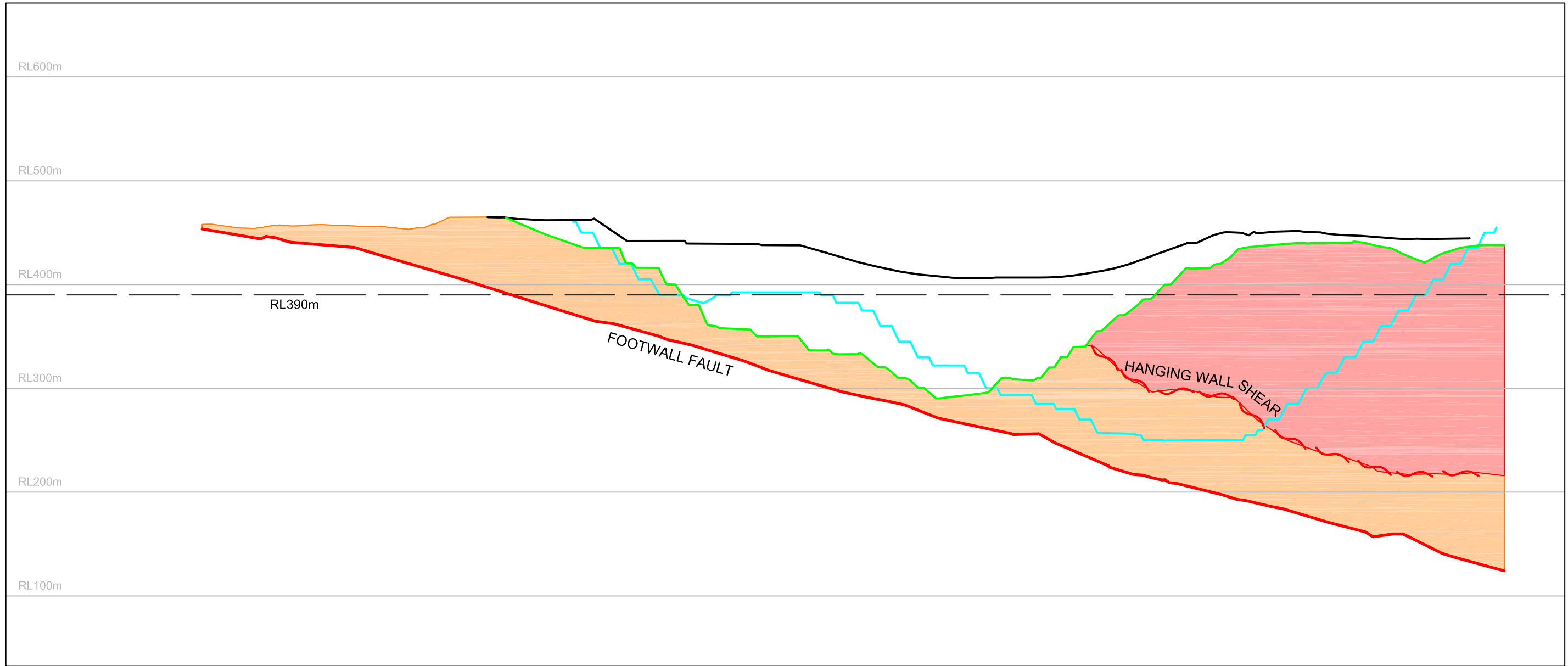
LEGEND

-  FILL LEVEL (DECEMBER 2000)
-  CURRENT PIT
-  PROPOSED ROUND HILL & GOLDEN POND PIT
-  PROPOSED SOUTHERN PIT
-  HANGING WALL
-  HYDE - MACRAES SHEAR ZONE
-  TOE FAULT


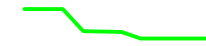







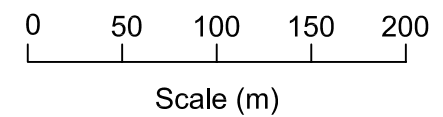
Pells Sullivan Meynink

Oceana Gold Round Hill East	
FOOTWALL FAULT & HANGING WALL SECTION 14950N	
PSM 71.R40	Figure A1



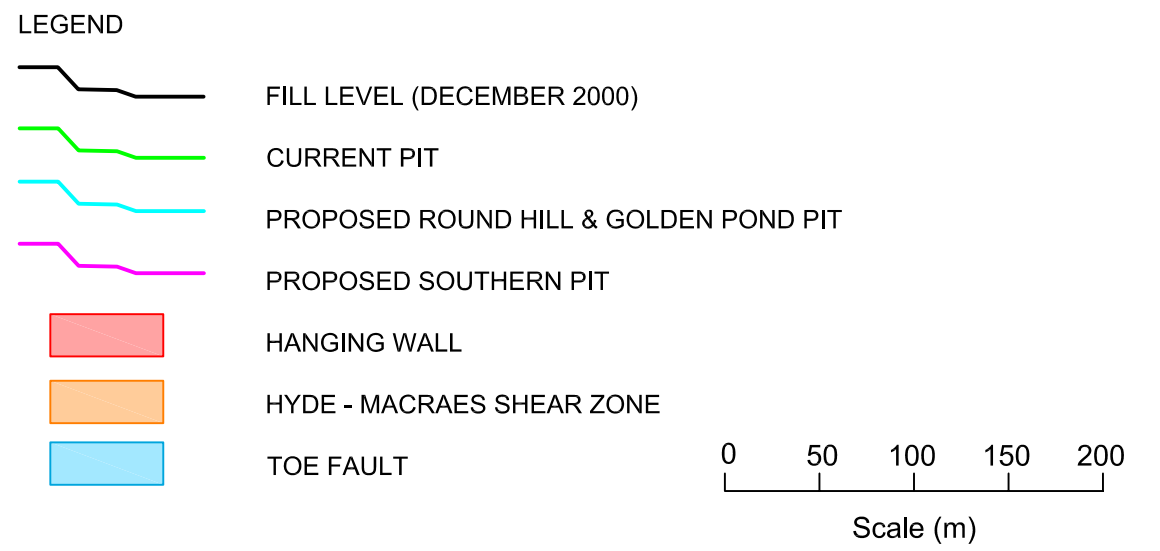
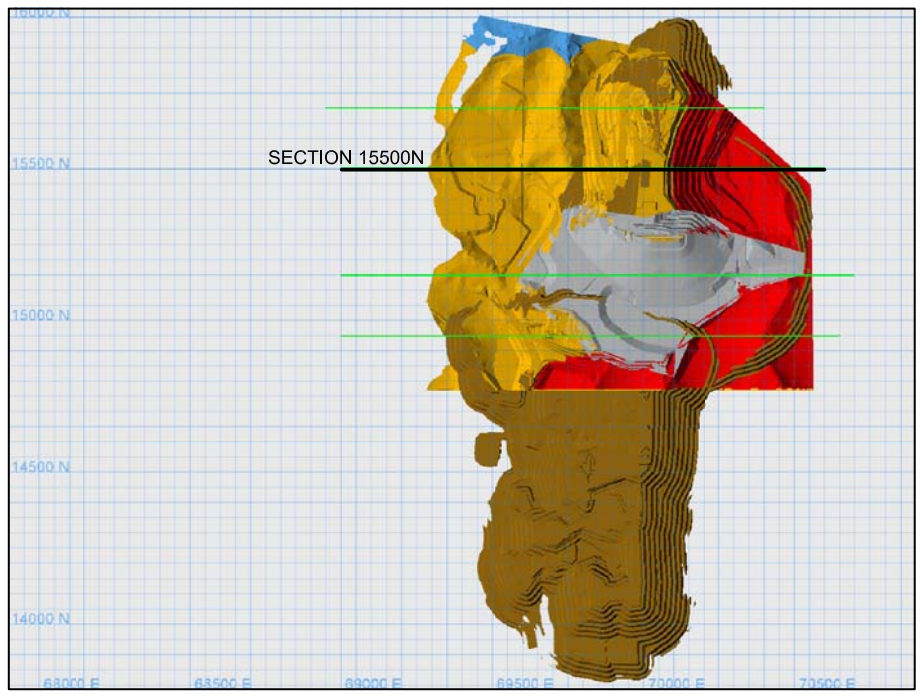
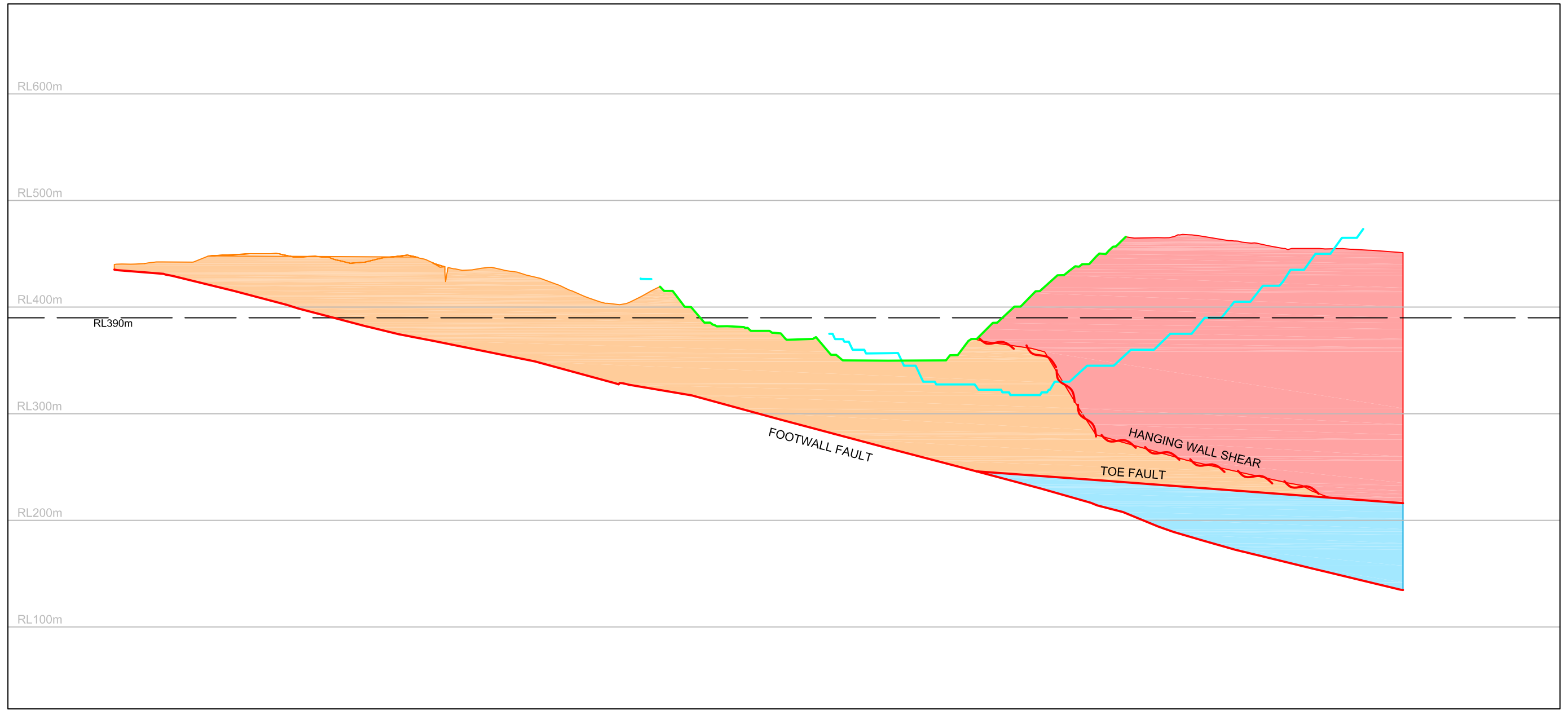
**LEGEND**

-  FILL LEVEL (DECEMBER 2000)
-  CURRENT PIT
-  PROPOSED ROUND HILL & GOLDEN POND PIT
-  PROPOSED SOUTHERN PIT
-  HANGING WALL
-  HYDE - MACRAES SHEAR ZONE
-  TOE FAULT



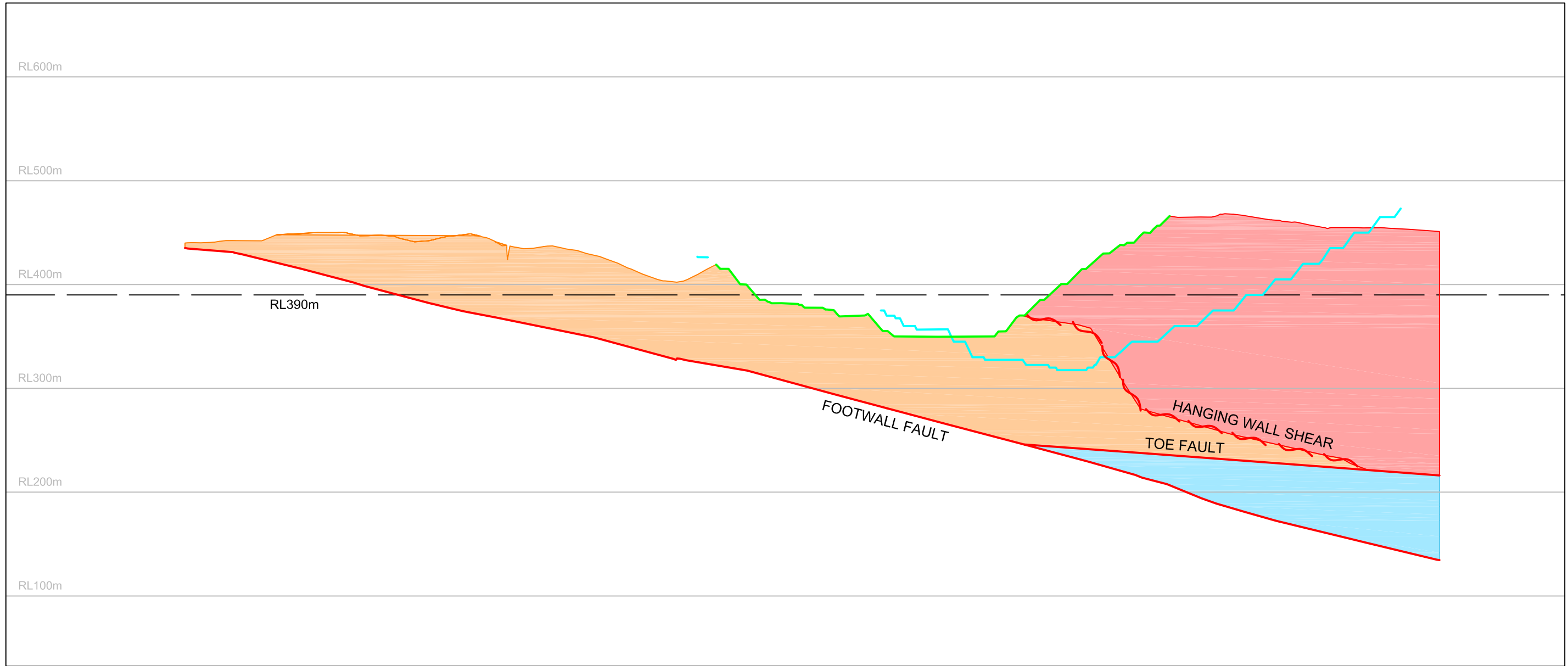
**Pells Sullivan Meynink**

Oceana Gold Round Hill East	
FOOTWALL FAULT & HANGING WALL SECTION 15150N	
PSM 71.R40	Figure A2










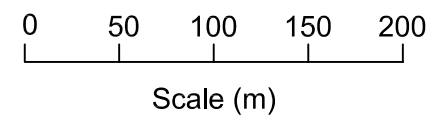
**Pells Sullivan Meynink**

Oceana Gold Round Hill East	
FOOTWALL FAULT & HANGING WALL SECTION 15500N	
PSM 71.R40	Figure A3



**LEGEND**

-  FILL LEVEL (DECEMBER 2000)
-  CURRENT PIT
-  PROPOSED ROUND HILL & GOLDEN POND PIT
-  PROPOSED SOUTHERN PIT
-  HANGING WALL
-  HYDE - MACRAES SHEAR ZONE
-  TOE FAULT



**Pells Sullivan Meynink**

Oceana Gold Round Hill East	
FOOTWALL FAULT & HANGING WALL SECTION 15700N	
PSM 71.R40	Figure A4