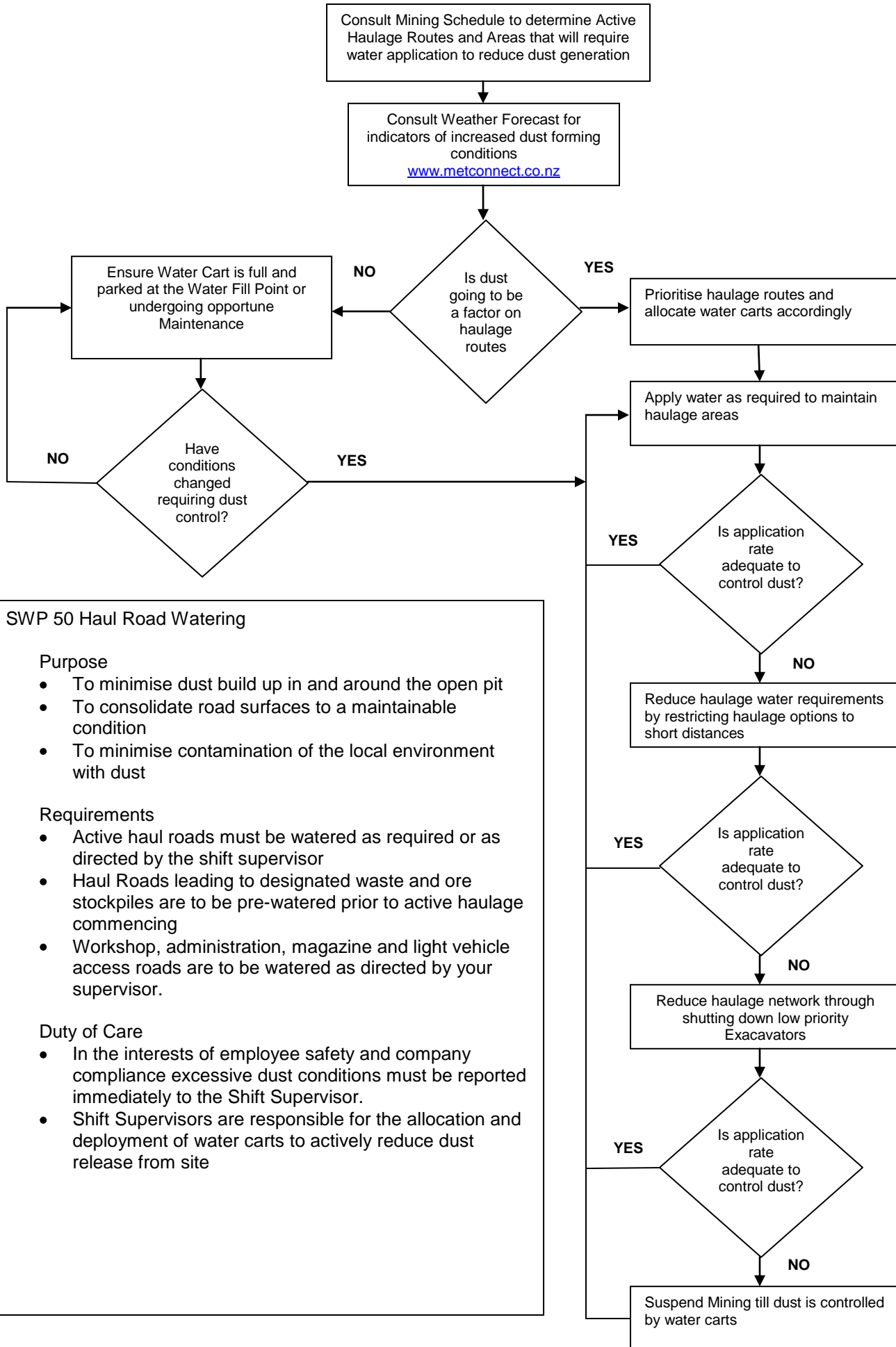


Open Cut Supervisors Dust Management Decision Tree



SWP 50 Haul Road Watering

Purpose

- To minimise dust build up in and around the open pit
- To consolidate road surfaces to a maintainable condition
- To minimise contamination of the local environment with dust

Requirements

- Active haul roads must be watered as required or as directed by the shift supervisor
- Haul Roads leading to designated waste and ore stockpiles are to be pre-watered prior to active haulage commencing
- Workshop, administration, magazine and light vehicle access roads are to be watered as directed by your supervisor.

Duty of Care

- In the interests of employee safety and company compliance excessive dust conditions must be reported immediately to the Shift Supervisor.
- Shift Supervisors are responsible for the allocation and deployment of water carts to actively reduce dust release from site