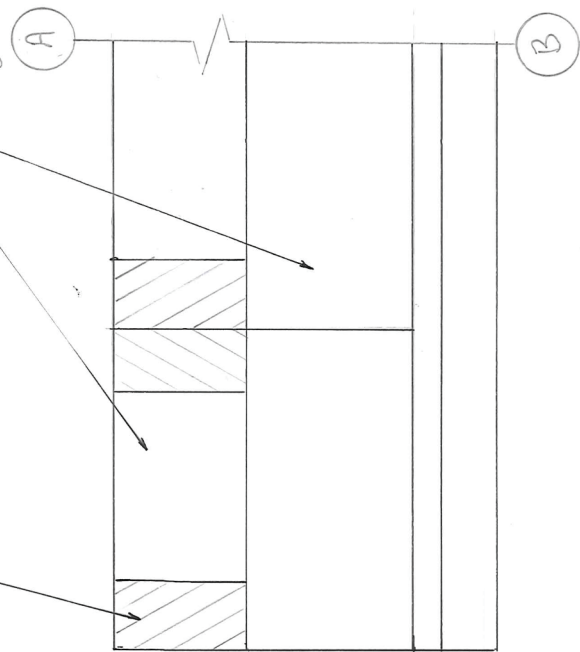


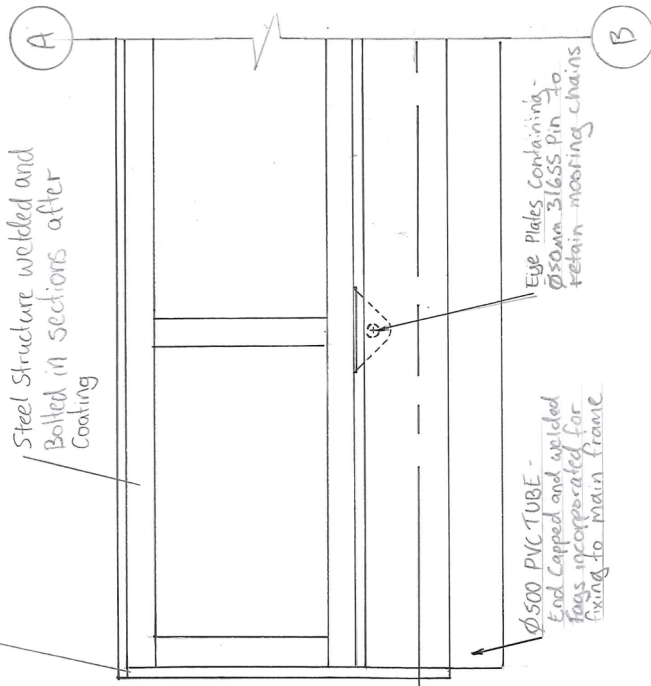
SIDES - Painted in a reflective light base colour to increase visibility day and night

Area Reserved for Day/Night Reflection Panels - HIP GRADE 500x500 - fixed to top edge



21mm H5 Construction Plywood layed over Steel frame

Steel Structure welded and Bolted in sections after Coating



Edge Plates containing Ø150mm SILSS Pin To retain mooring chains

Ø500 PVC TUBE - End Capped and welded Rags incorporated for fixing to main frame

PONTOON ELEVATIONS - DETAIL

Prepared for: Peter Graham  
On: 5/07/2017

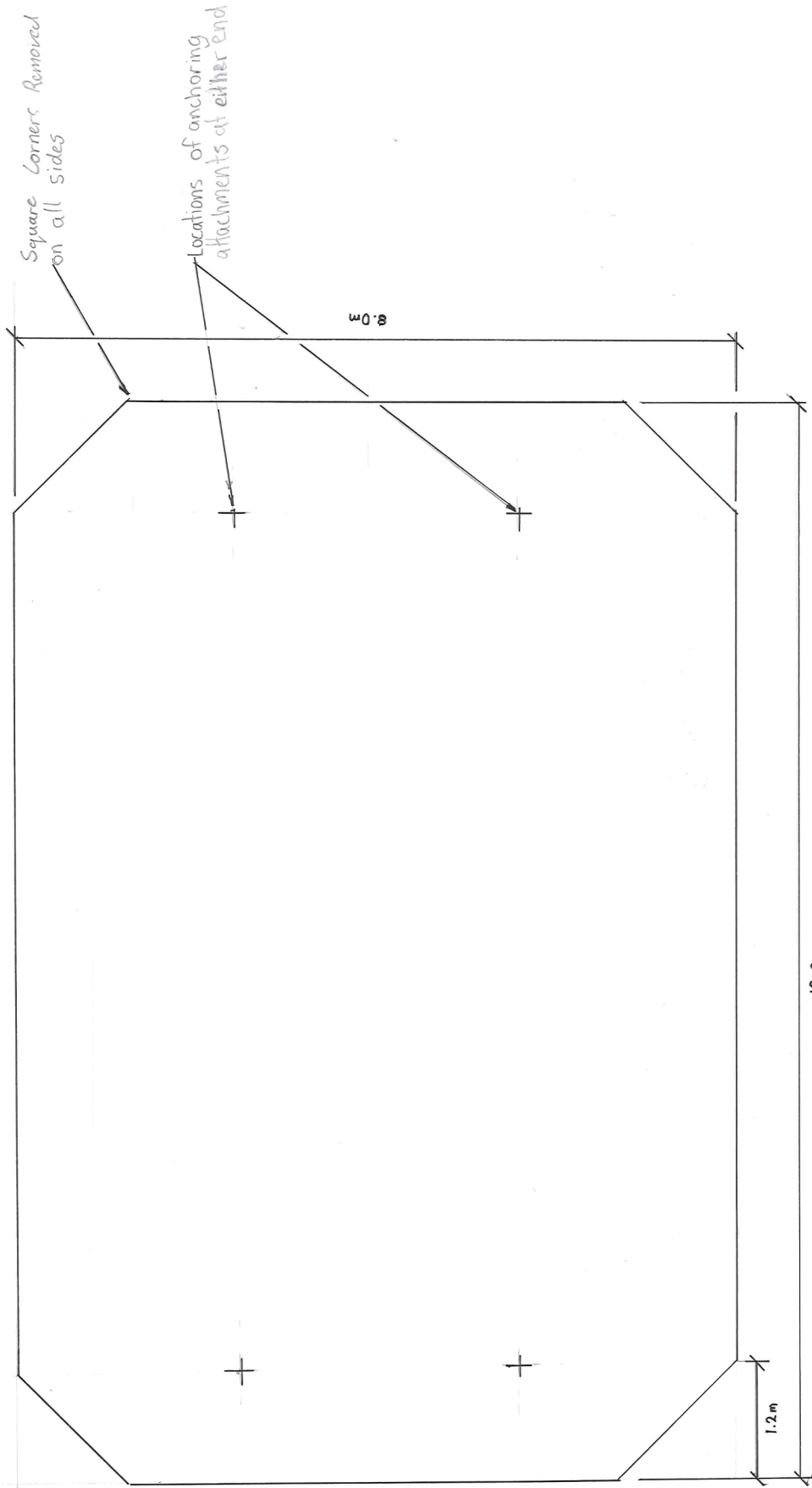
Prepared By: Steven Phillips

Drawing No: 2

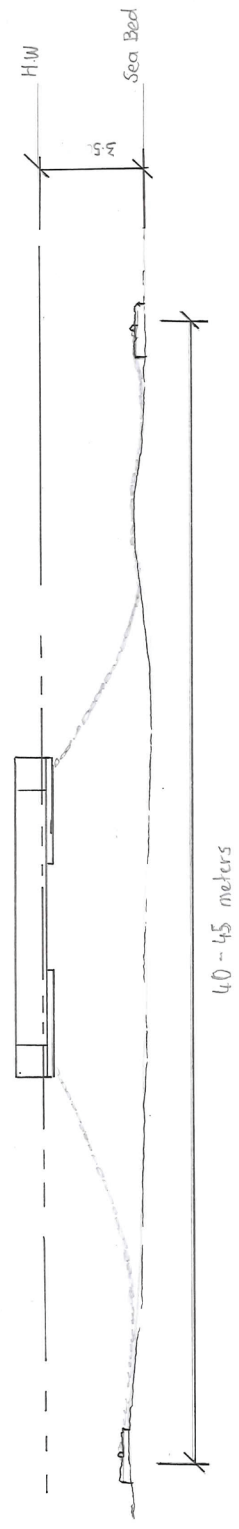
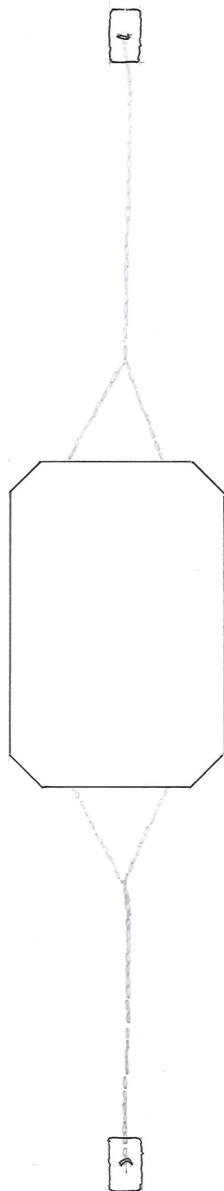
Unit: Millimeters

Scale: 1:20

Golf Tee Pontoon



Prepared for: Peter Graham	Drawing No 1
On: 5/09/2017	DIM. Meters
Prepared By: Steven Phillips	Scale 1:50
PLAN VIEW	
Golf Tee Portoon	



MOORING PLAN AND ELEVATION VIEWS	Prepared for: Peter Graham	Drawing No 3
	On 5/07/2017	DIM. METERS
Golf Tee Pontoon	Prepared By: Steven Phillips	Scale 1:60