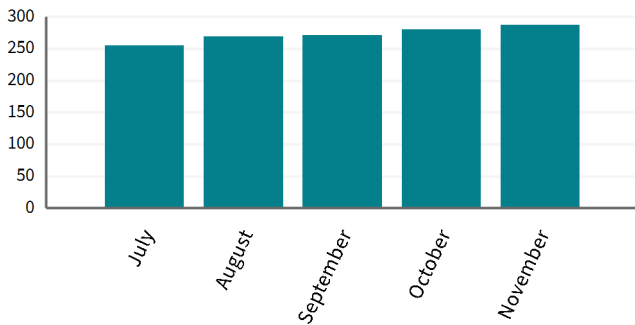


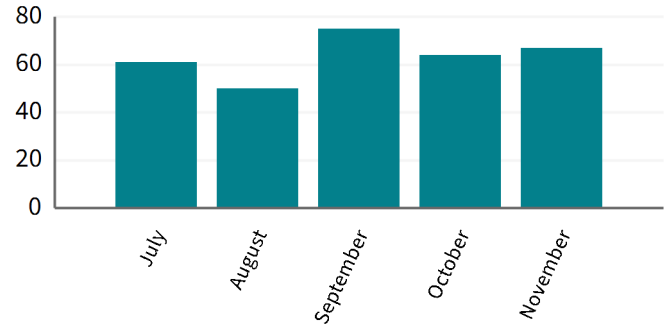
## CONSENTS

Level of Service	Target	Current Result
Percentage of resource consent applications processed in accordance with Resource Management Act 1991 legislative timeframes	98%	100%
Percentage of public inquiries for consent information completed within 7 working days	99.5%	97%

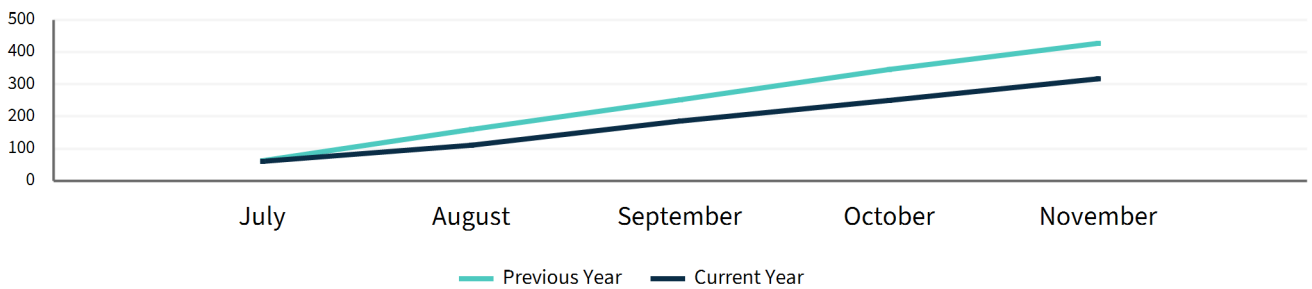
Applications in Progress per Month



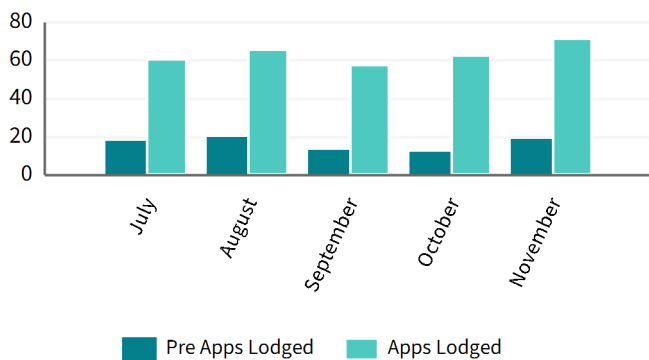
Consents Issued per Month



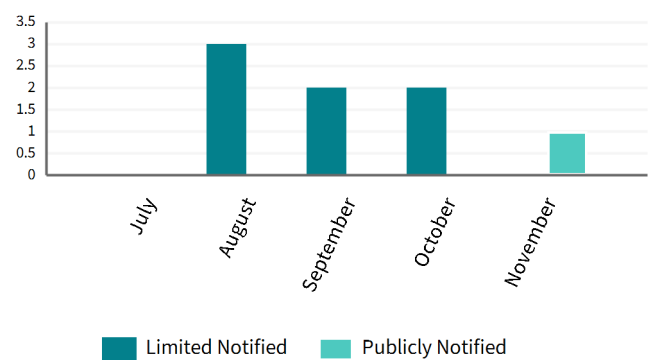
Consents Issued Cumulative Total



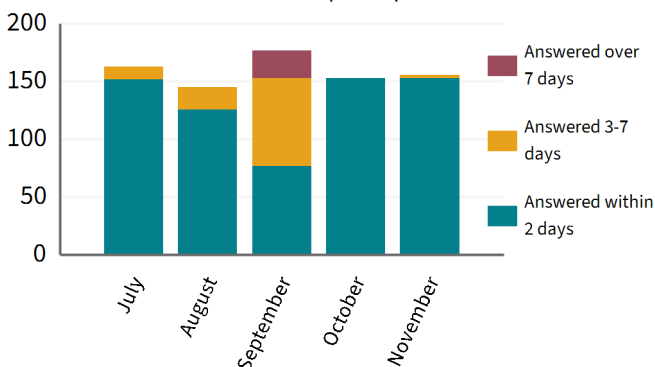
Pre-Applications and Applications Received



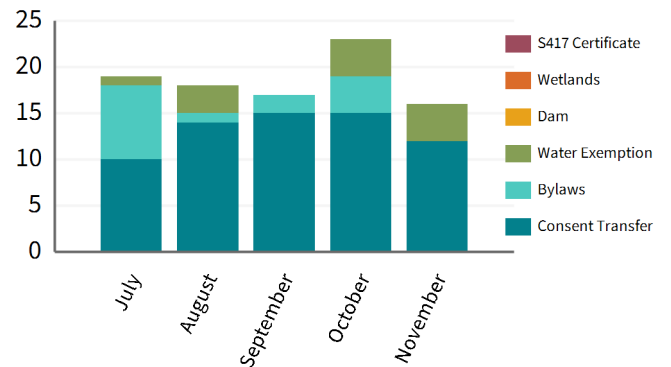
Notified Applications per Month



Consent Public Enquiries per Month



Other Applications per Month



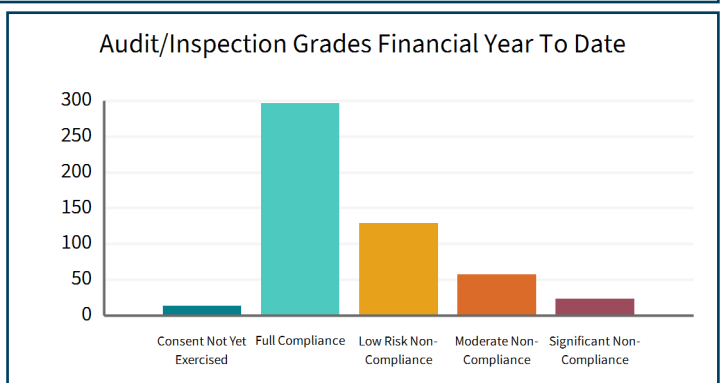
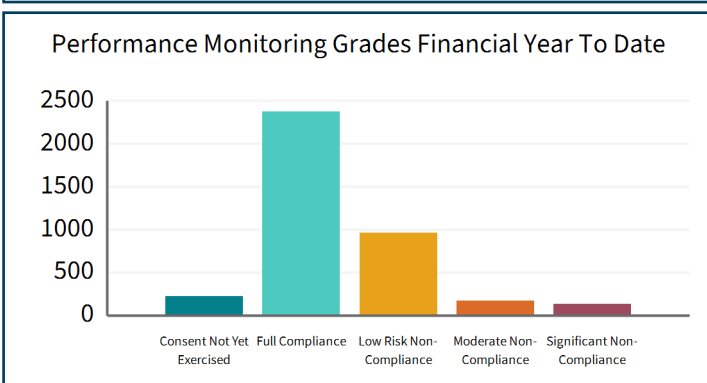
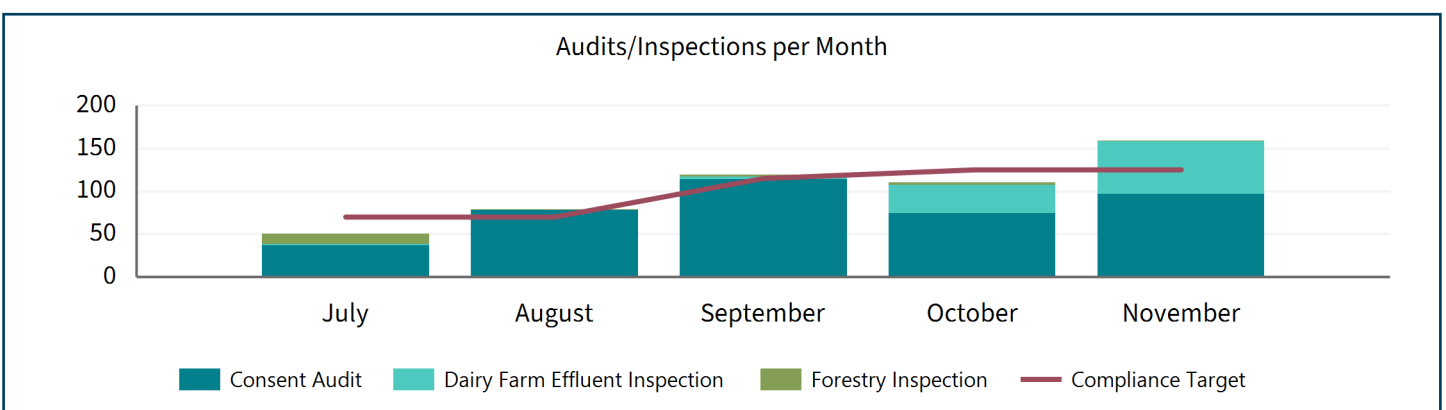
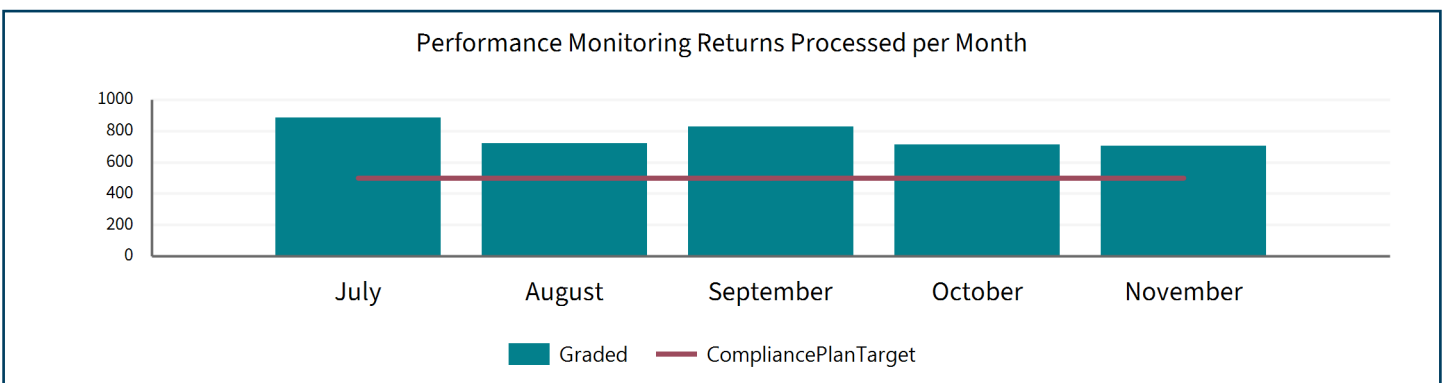
## COMPLIANCE AND ENVIRONMENTAL DELIVERY DATA AND SYSTEMS

Annual Plan Measured	Compliance Plan Target	Annual Plan Target	Total Graded YTD	Compliance Plan Target YTD	Percentage of Target YTD
Percentage of performance monitoring returns completed each year, as per the Compliance Audit and Performance Monitoring Schedule targets	7250	90%	3852	3500	110.1%
Percentage of programmed inspections/audits completed each year, as per the Compliance Audit and Performance Monitoring Schedule targets	1225	90%	517	505	102.4%

CME Metrics Report Measure	Compliance Plan Target	Monitored YTD	Target YTD	Percentage of Target YTD
Individual Resource Consents Requiring Monitoring	2500	1858	1042	178.3%

## Financial Year To Date Inspection Totals

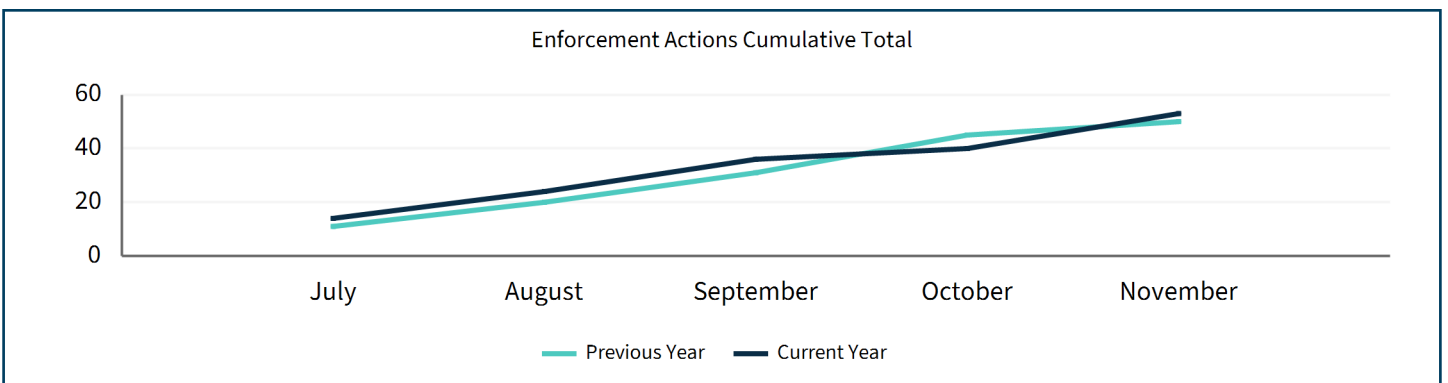
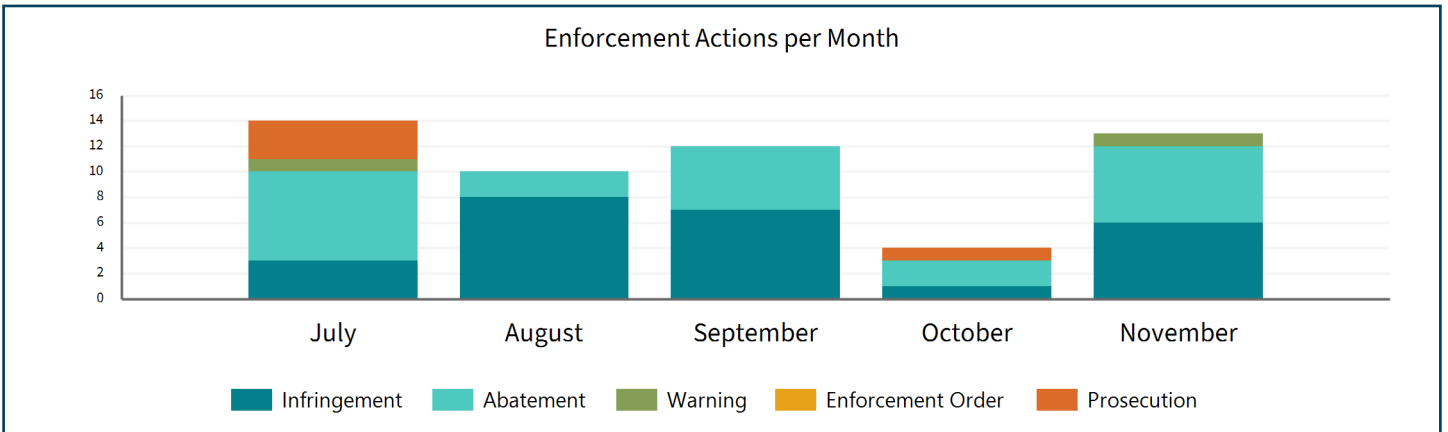
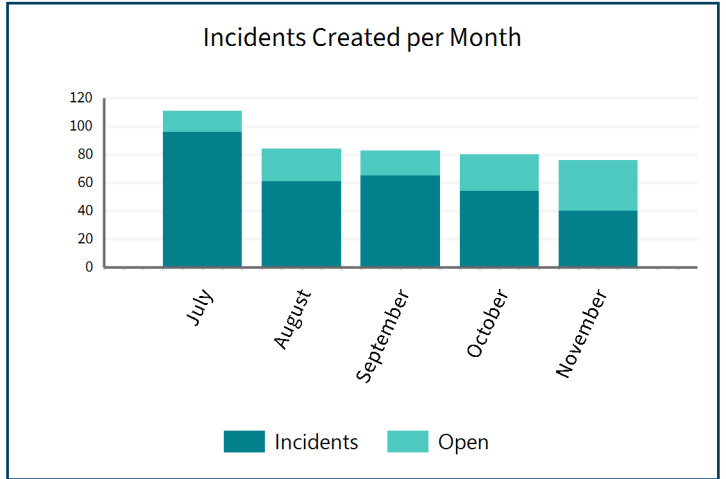
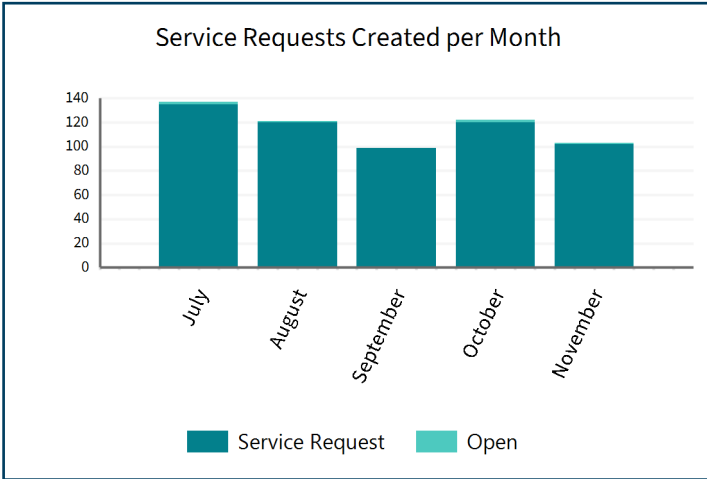
Audits	400	Dairy Inspections	98	Forestry Inspections	19
--------	-----	-------------------	----	----------------------	----



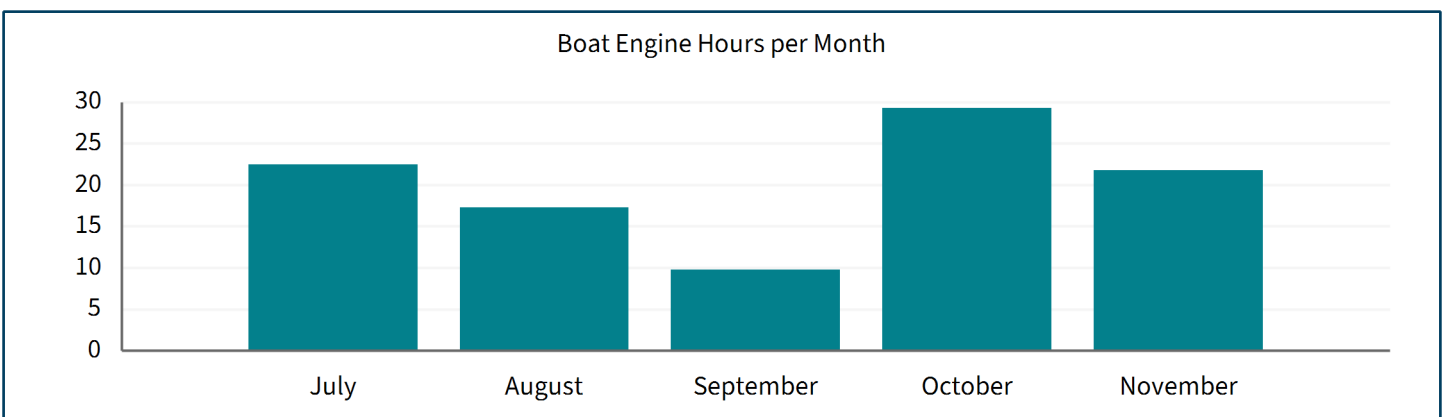
## SERVICE REQUESTS, INCIDENTS AND ENFORCEMENT

### Financial Year To Date Enforcement Totals

Infringements	25	Abatements	22	Warnings	2	Prosecutions	4
---------------	----	------------	----	----------	---	--------------	---

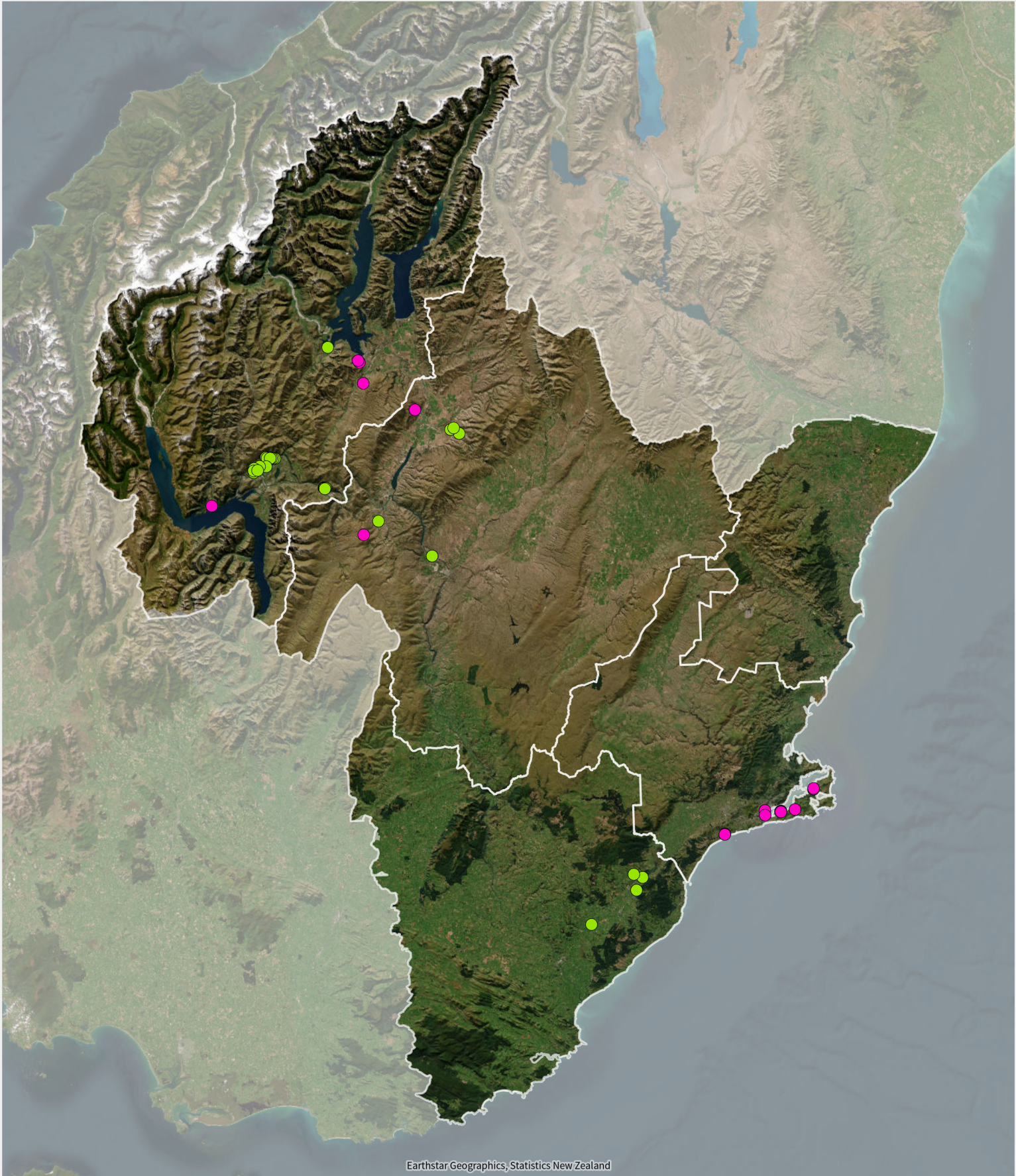


## HARBOUR MASTER





# Biosecurity Inspections November 2025



Biosecurity Inspections

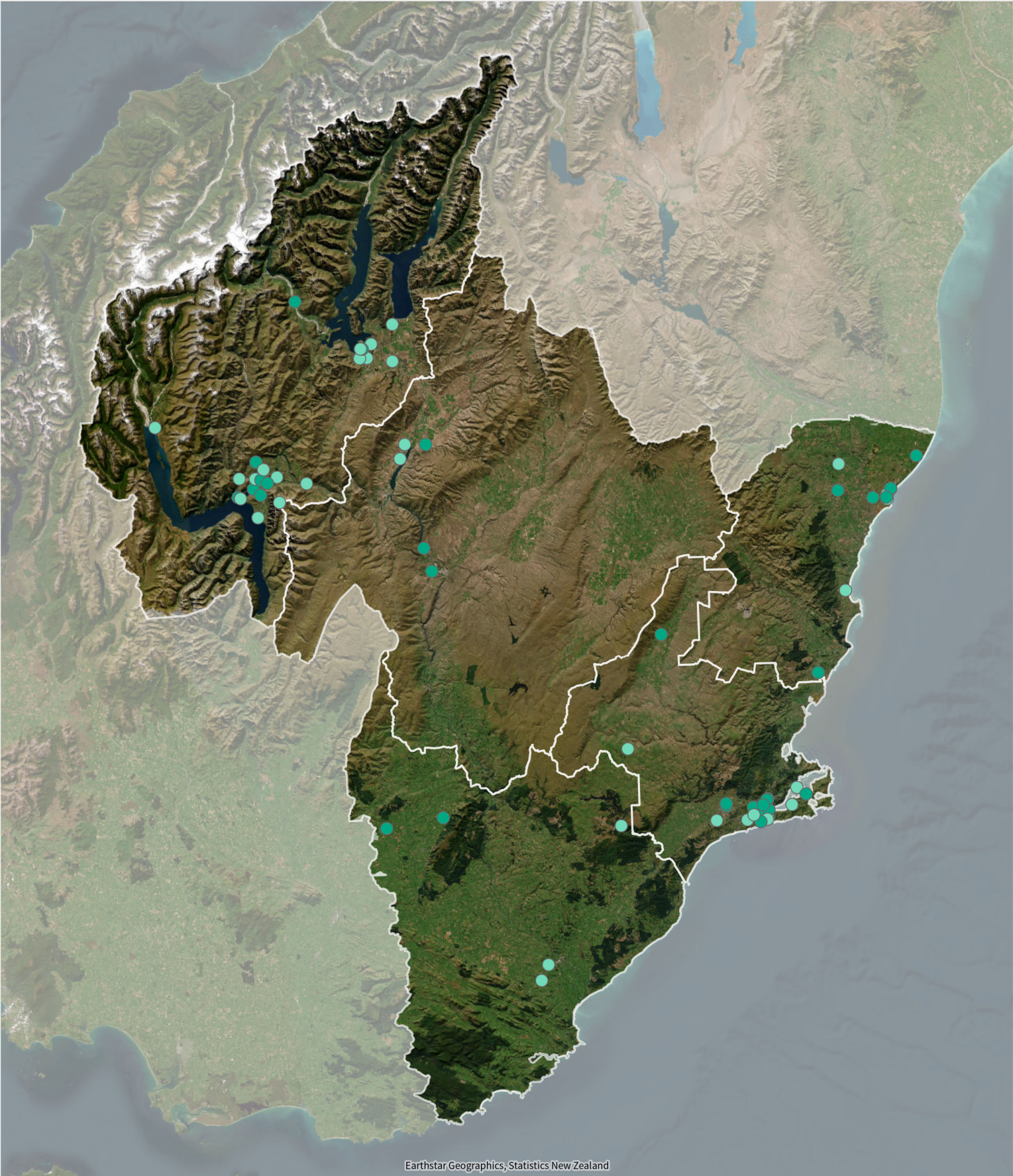
- Rabbit
- Non-Rabbit



Information on this map may not be used for the purposes of any legal disputes. The user should independently verify the accuracy of any information before taking any action in reliance upon it. Only records with a spatial location will show on the map. This map was generated for A4 printing on 4/12/2025 at the scale of 1:1,400,000.



# Incidents November 2025



## Incidents










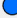
- Open
- Completed





# Consents Issued November 2025



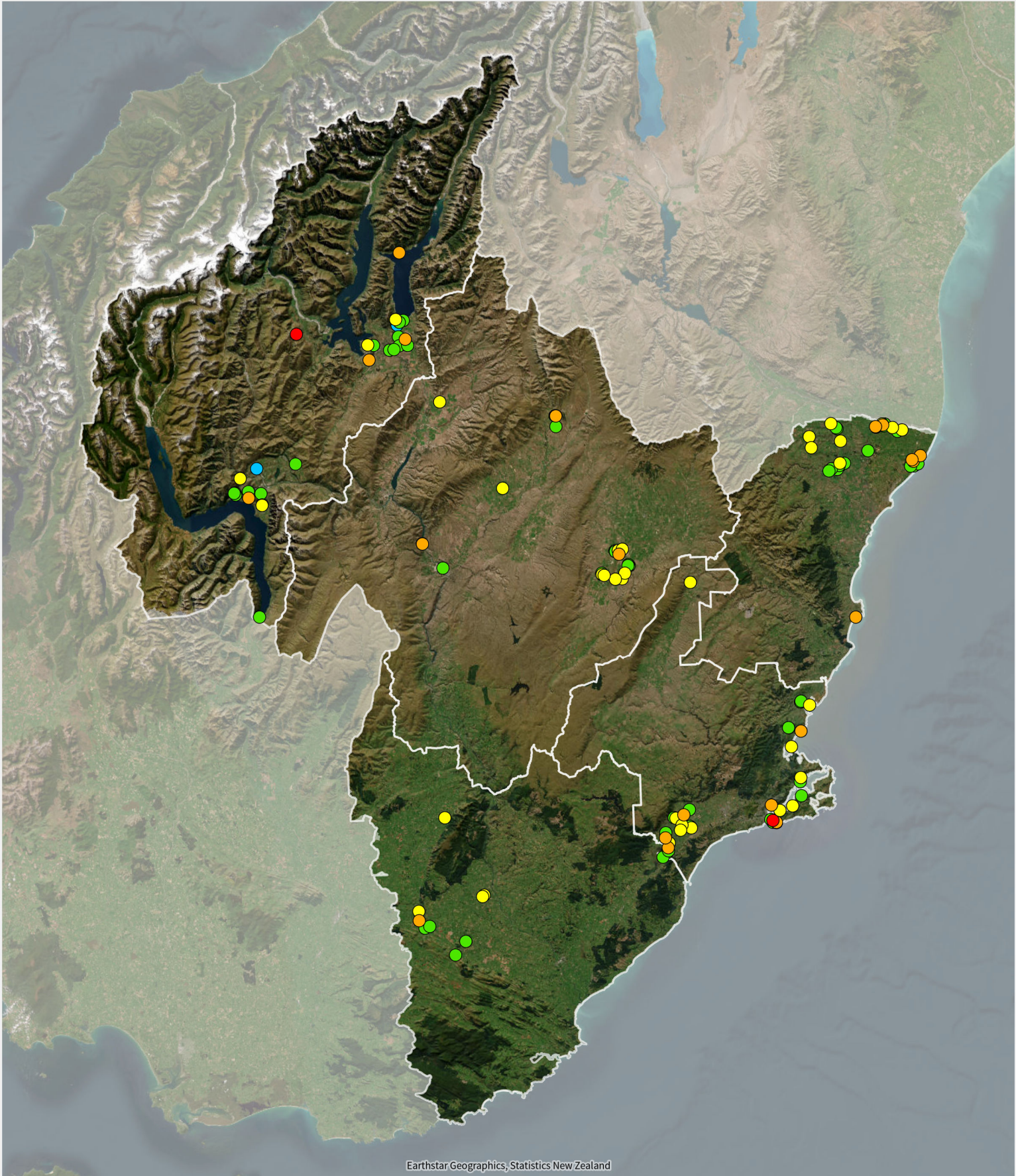
- |   |   |   |
|---|---|---|
|  Bore Construction Consent |  Discharge to Water Permit |  Surface Water Take Permit |
|  Dam Water Permit          |  Earthworks Consent        |  Compliance Certificate    |
|  Discharge to Air Permit   |  Land Use Consent          |   |
|  Discharge to Land Permit  |  Groundwater Take Permit   |   |



Information on this map may not be used for the purposes of any legal disputes. The user should independently verify the accuracy of any information before taking any action in reliance upon it. Only records with a spatial location will show on the map. This map was generated for A4 printing on 4/12/2025 at the scale of 1:1,400,000.



# Audits Completed November 2025



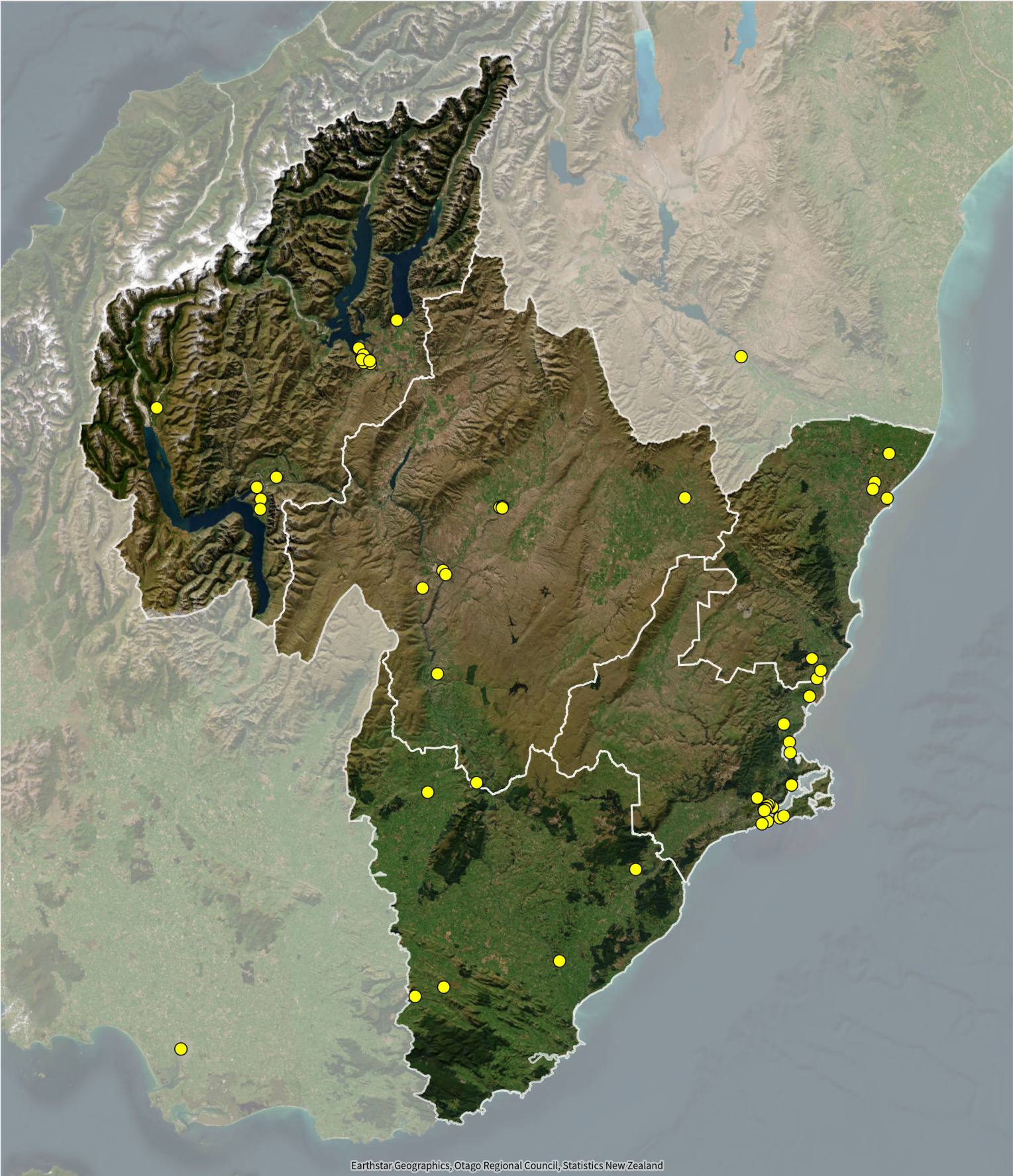
- Full Compliance
- Low Risk Non-Compliance
- Moderate Non-Compliance

- Significant Non-Compliance
- Consent Not Yet Exercised





# Catchment Advisor Engagements November 2025



Earthstar Geographics, Otago Regional Council, Statistics New Zealand

● Catchment Advisor Engagements



Information on this map may not be used for the purposes of any legal disputes. The user should independently verify the accuracy of any information before taking any action in reliance upon it. Only records with a spatial location will show on the map. This map was generated for A4 printing on 4/12/2025 at the scale of 1:1,400,000.