

# Minimum Flow Catchment Boundaries and Monitoring Sites



## Map B3



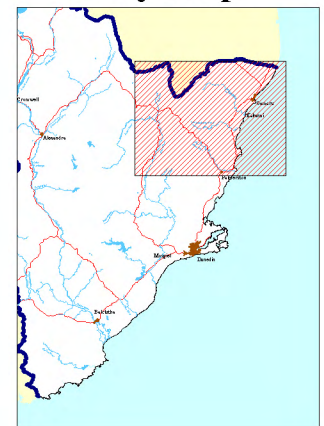
Map Scale  
1:250,000

### Key

- Regional Boundary
- MS## Monitoring Site
- Catchment Boundary

Approval for reproduction by the Otago Regional Council in terms of LINZ Map Licence No. 23732/002 Crown Copyright Reserved.

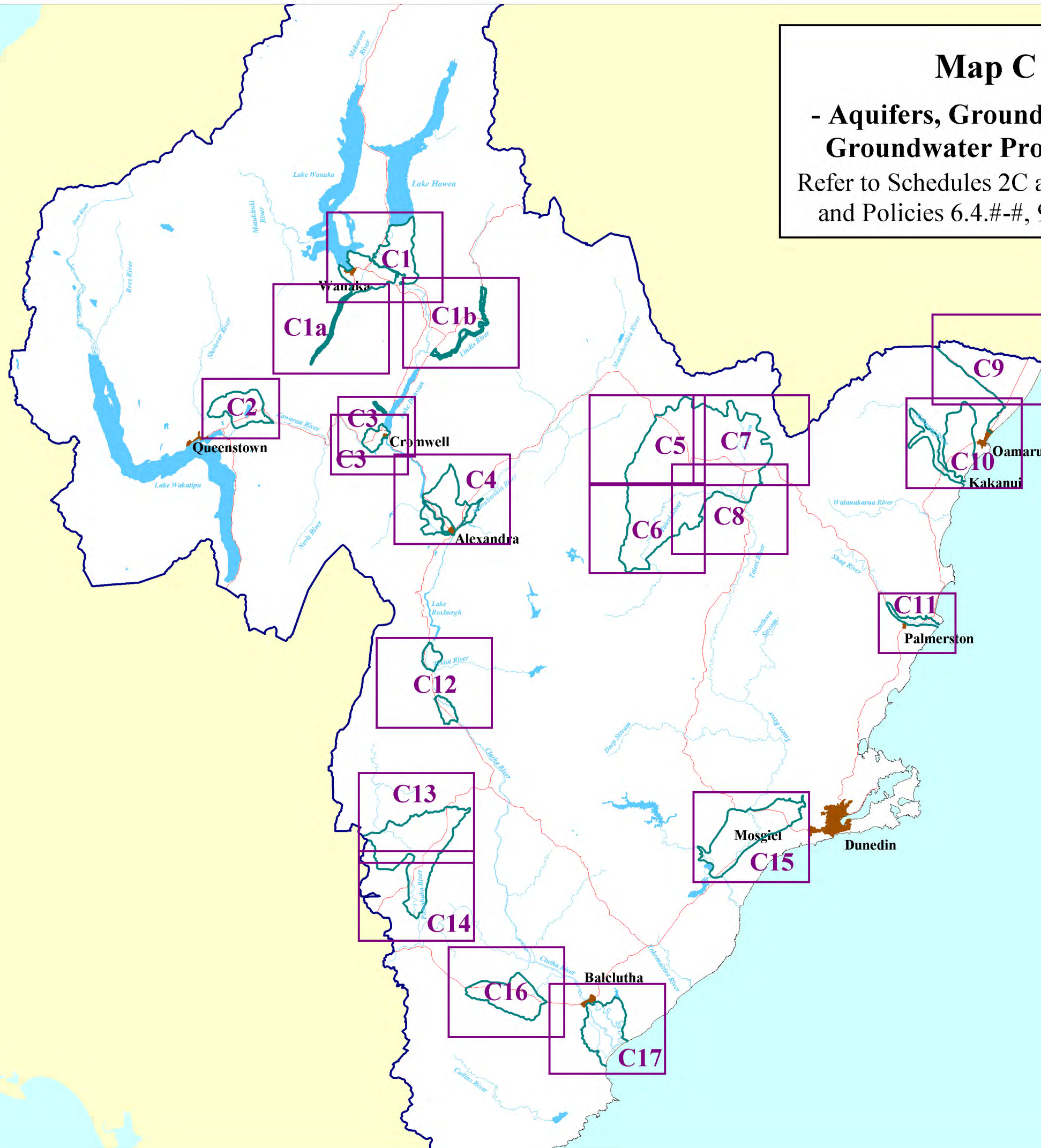
### Key Map



10 April 2010

# Map C Index

- Aquifers, Groundwater Zones and Groundwater Protection Zones  
Refer to Schedules 2C and 3A, Rules in 12.2, and Policies 6.4.#-#, 9.4.1, and 9.4.18-20



### Key

- Regional Boundary
- Aquifer Boundary
- Main River
- Main Road
- C## Map Boundary and Number
- Main Lake
- Urban Area

Grid North

10 April 2010

# Cardrona Alluvial Ribbon and Wanaka Basin Cardrona Gravel Aquifers




## Map C1a

Grid North



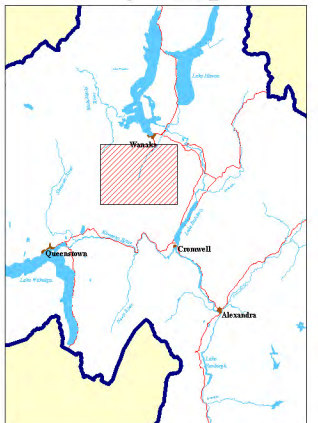
Map Scale  
1:75,000

### Key

 Aquifer Boundary

Approval for reproduction by the Otago Regional Council in terms of LINZ Map Licence No. 23732/002 Crown Copyright Reserved.

### Key Map



10 April 2010

# Lindis Alluvial Ribbon and Hawea Basin Aquifers

Decision F1


## Map C1b

Grid North



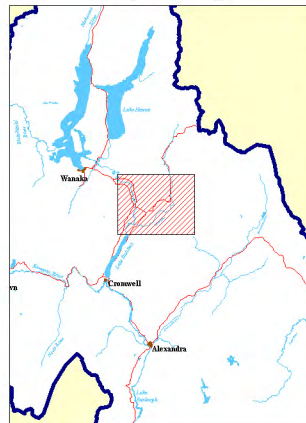
Map Scale  
1:75,000

Key

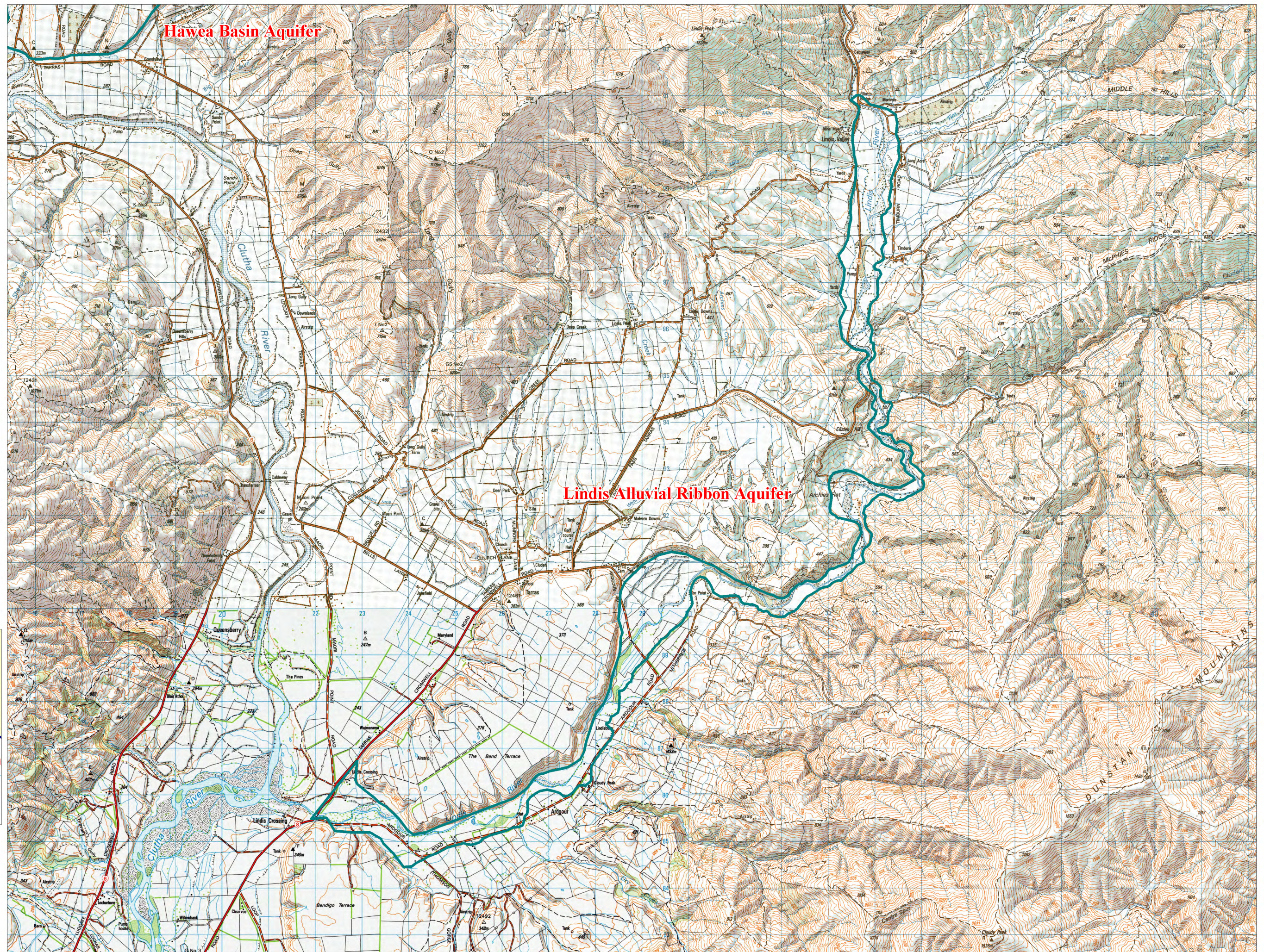
 Aquifer Boundary

Approval for reproduction by the Otago Regional Council in terms of LINZ Map Licence No. 23732/002 Crown Copyright Reserved.

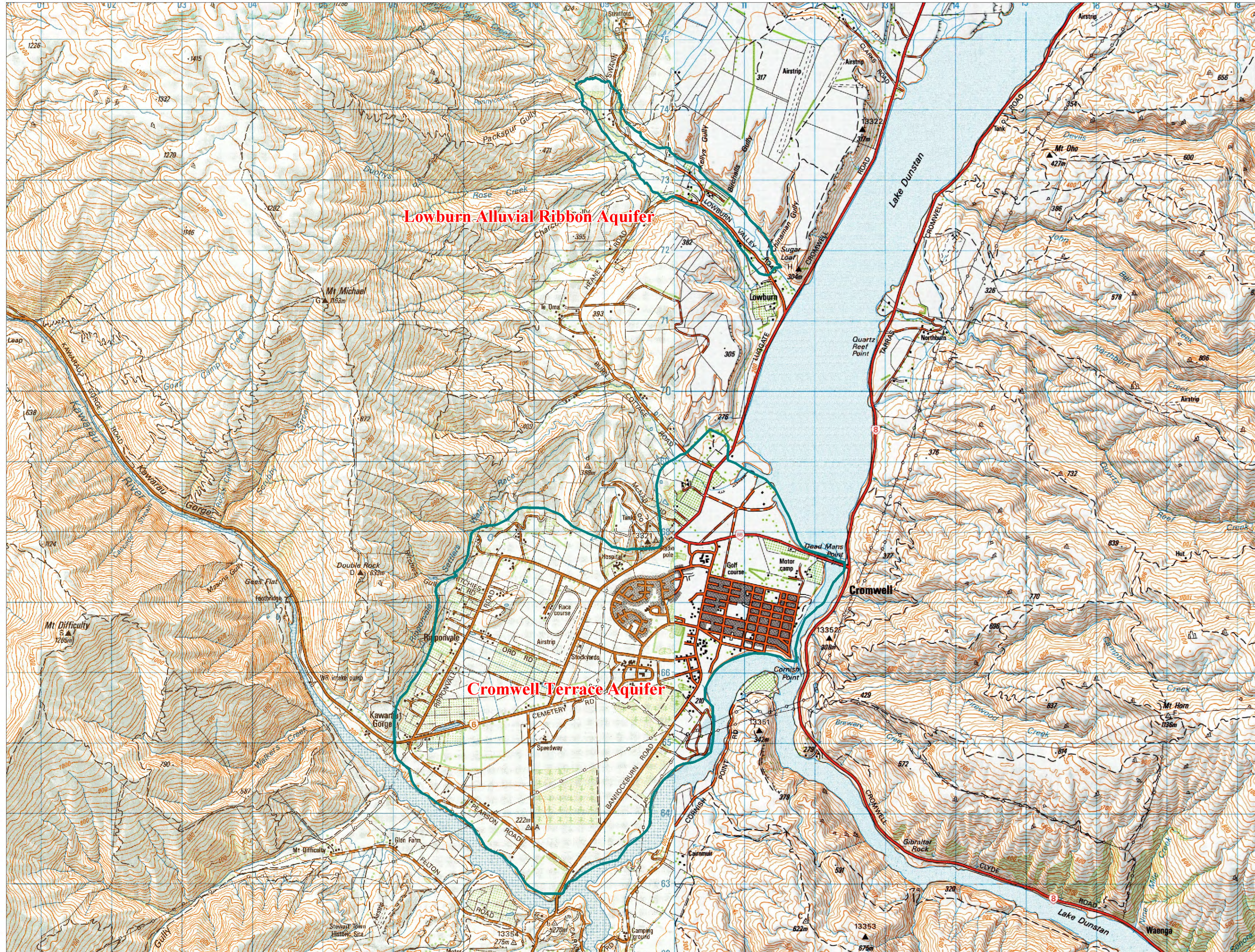
Key Map



10 April 2010



# Lowburn Alluvial Ribbon and Cromwell Terrace Aquifers



## Map C3



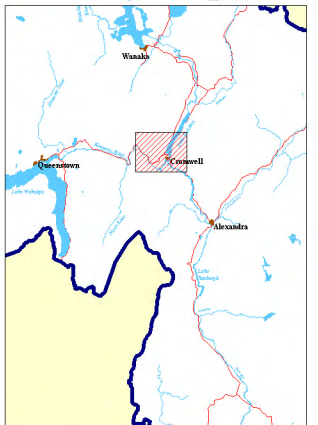
Map Scale  
1:50,000

### Key

Aquifer Boundary

Approval for reproduction by the Otago Regional Council in terms of LINZ Map Licence No. 23732/002 Crown Copyright Reserved.

### Key Map



10 April 2010