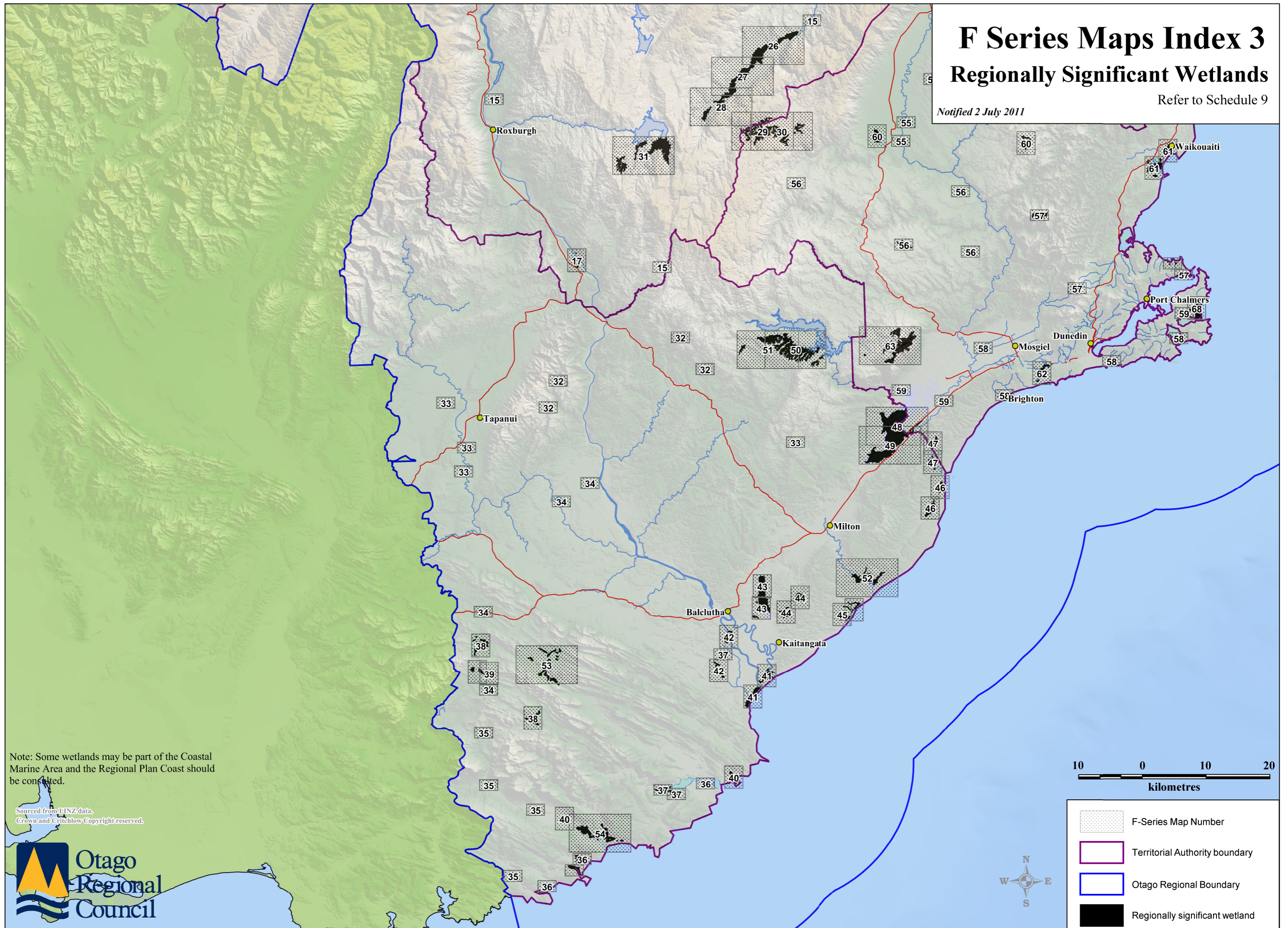


# F Series Maps Index 3

## Regionally Significant Wetlands

Refer to Schedule 9





Notified 2 July 2011



Note: Some wetlands may be part of the Coastal Marine Area and the Regional Plan Coast should be consulted.

Sourced from LINZ data.  
Crown and Crichtlow Copyright reserved.



-  F-Series Map Number
-  Territorial Authority boundary
-  Otago Regional Boundary
-  Regionally significant wetland