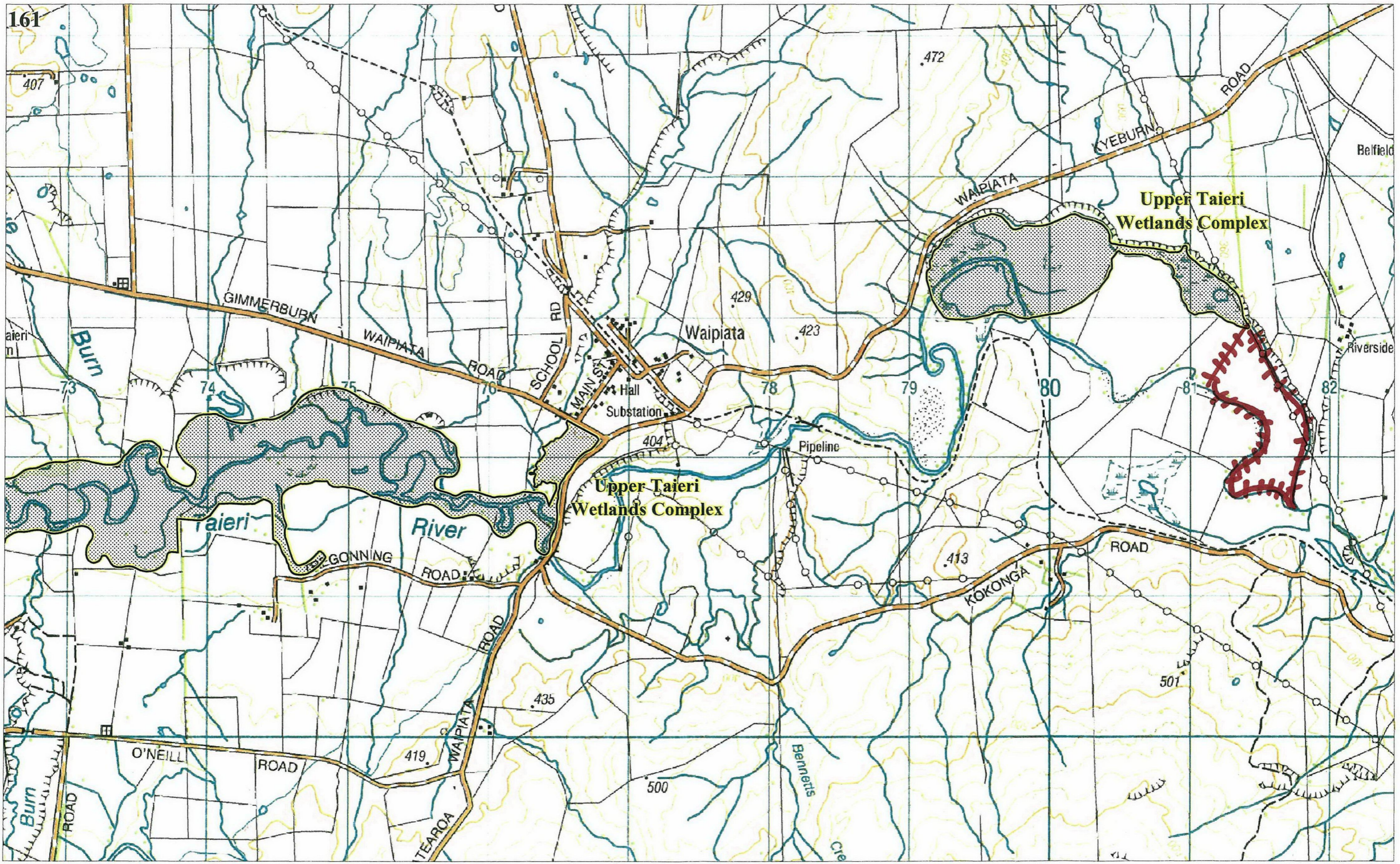
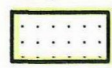



APPENDIX 2
MAP SHOWING AREAS SOUGHT TO BE ADDED TO UPPER TAIERI
SCROLL PLAIN WETLAND COMPLEX
(Attached)



Basemap: Land Information New Zealand Topo50 Maps
Notified 2 July 2011

Key


 Regionally significant wetland

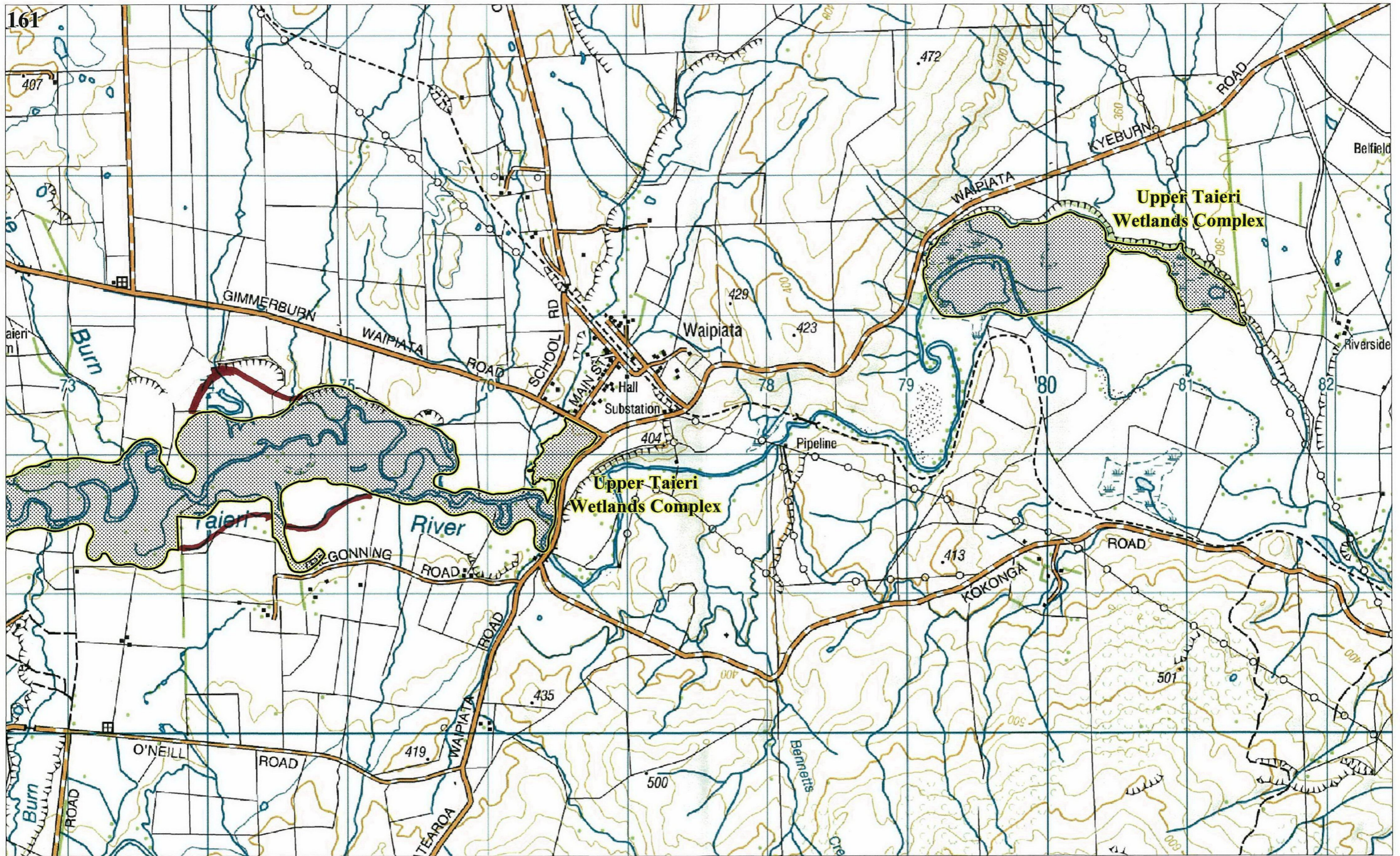
 0.5 0 0.5 1 kilometres

Sourced from LINZ data, Crown and Critchlow Copyright reserved.

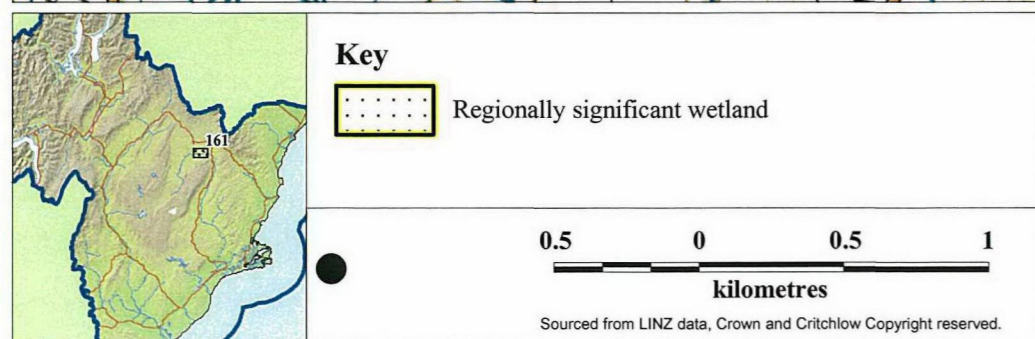
Proposed Plan Change 2 Regionally Significant Wetlands Map F22

*Proposed
amended
boundary*



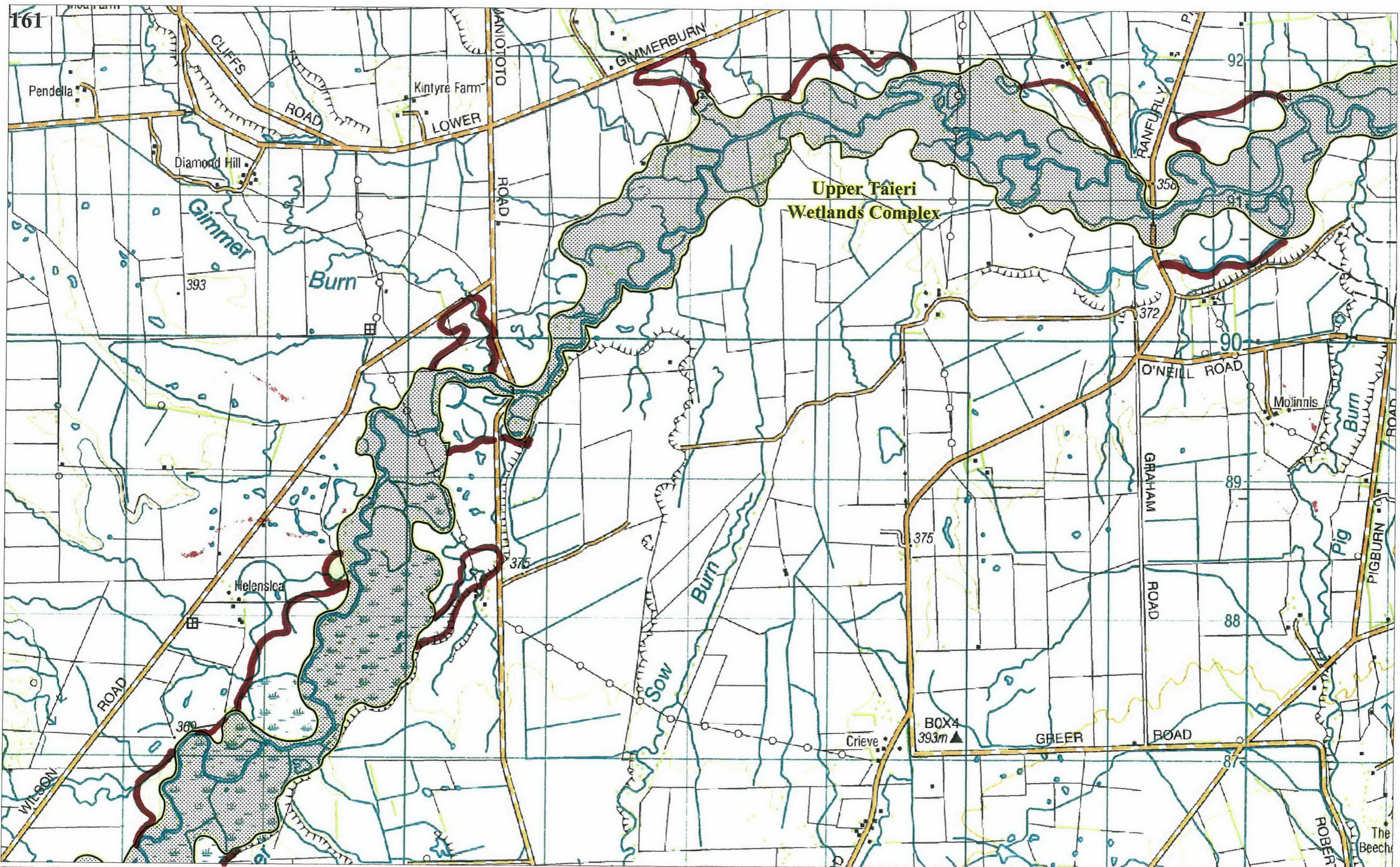



Basemap: Land Information New Zealand Topo50 Maps
Notified 2 July 2011



Proposed Plan Change 2 Regionally Significant Wetlands Map F22

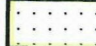




Basemap: Land Information New Zealand Topo50 Maps
Notified 2 July 2011



Key

 Regionally significant wetland

0.5 0 0.5 1
kilometres

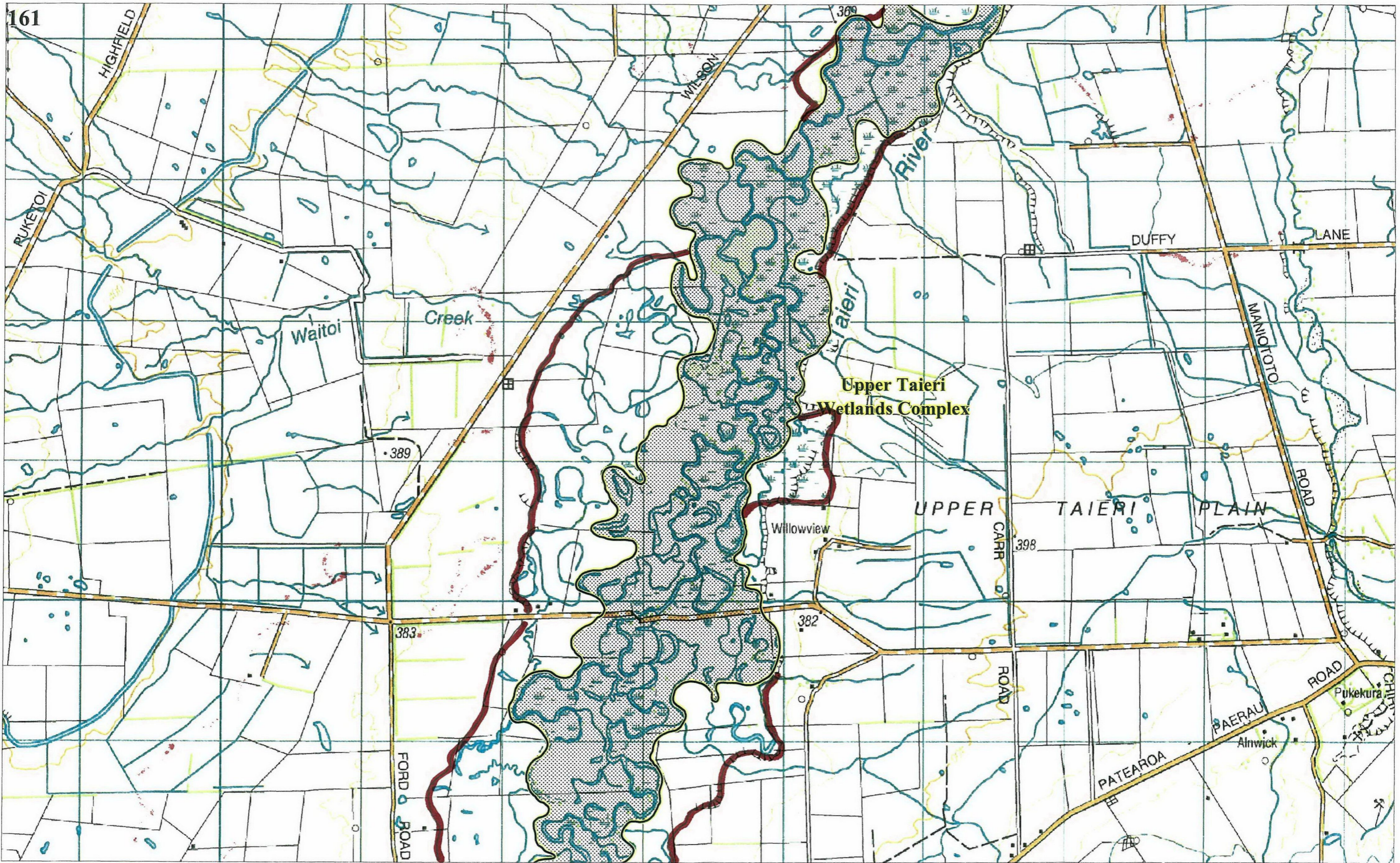
Sourced from LINZ data, Crown and Critchlow Copyright reserved.

Proposed Plan Change 2

Regionally Significant Wetlands

Map F23

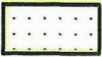




Basemap: Land Information New Zealand Topo50 Maps
Notified 2 July 2011



Key

 Regionally significant wetland

0.5 0 0.5 1
kilometres

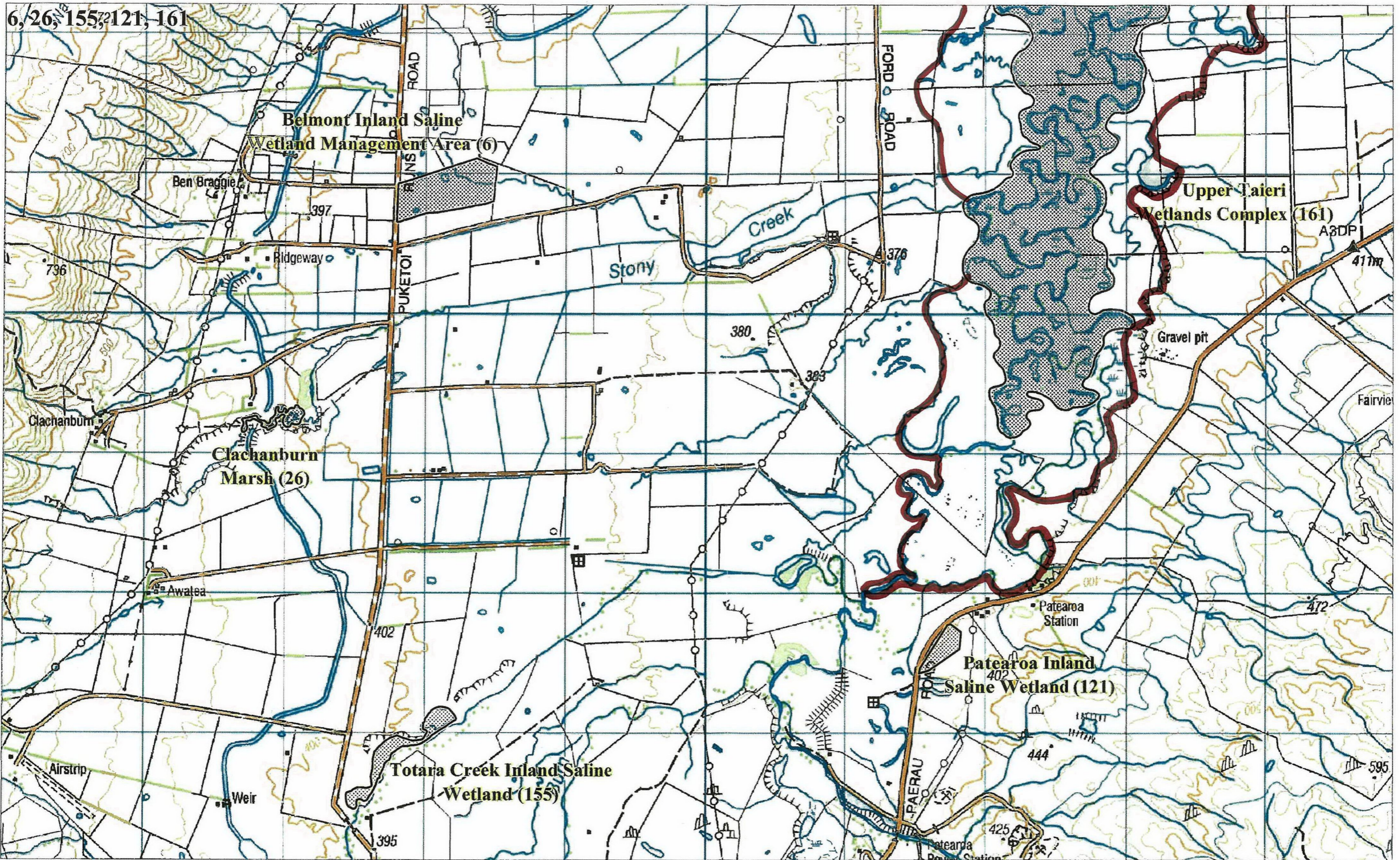
Sourced from LINZ data, Crown and Critchlow Copyright reserved.

Proposed Plan Change 2

Regionally Significant Wetlands

Map F24





Basemap: Land Information New Zealand Topo50 Maps
Notified 2 July 2011

Key

Regionally significant wetland

0.5 0 0.5 1
kilometres

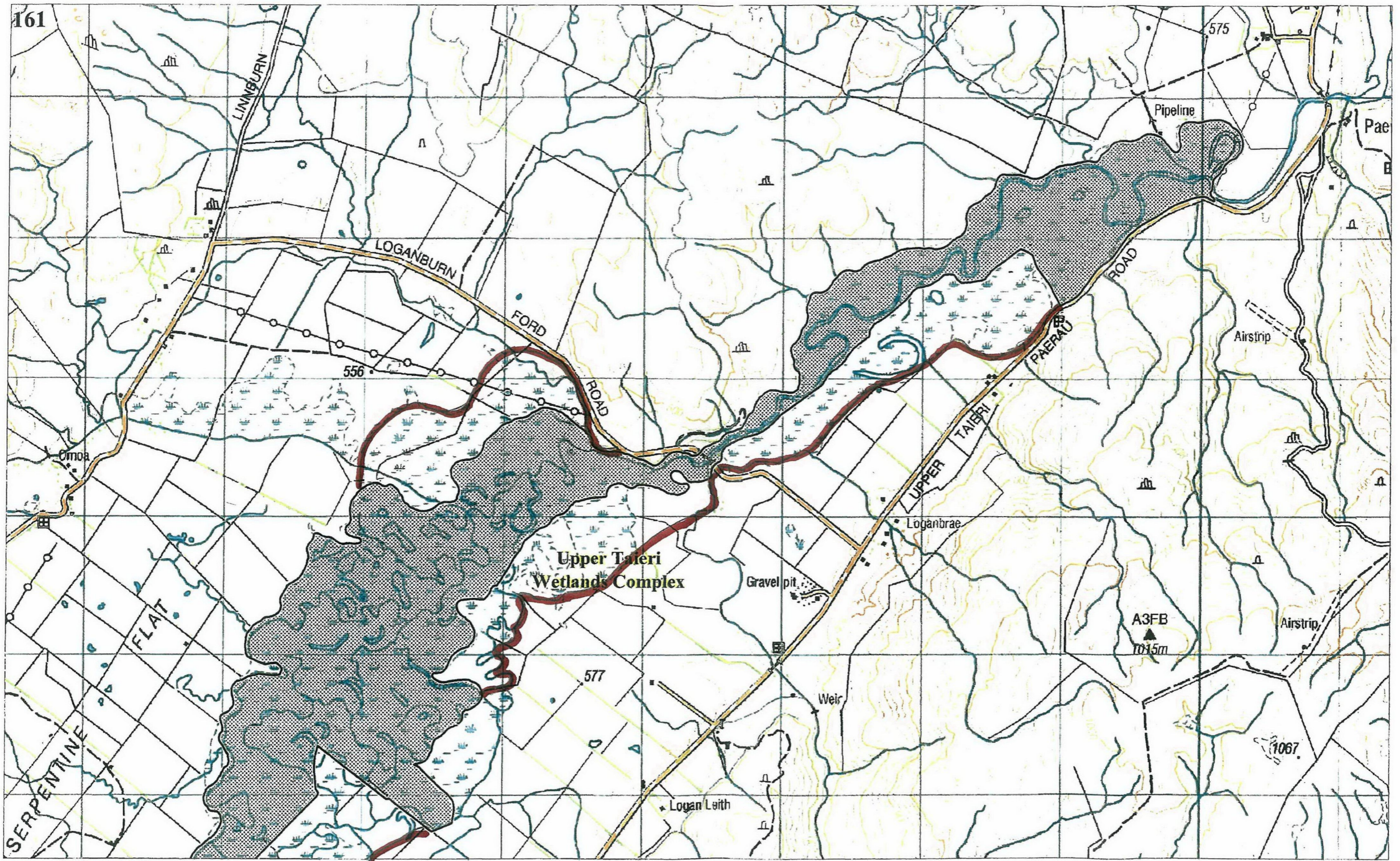
Sourced from LINZ data, Crown and Critchlow Copyright reserved.

Proposed Plan Change 2

Regionally Significant Wetlands

Map F25

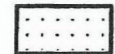




Basemap: Land Information New Zealand Topo50 Maps
Notified 2 July 2011



Key

 Regionally significant wetland



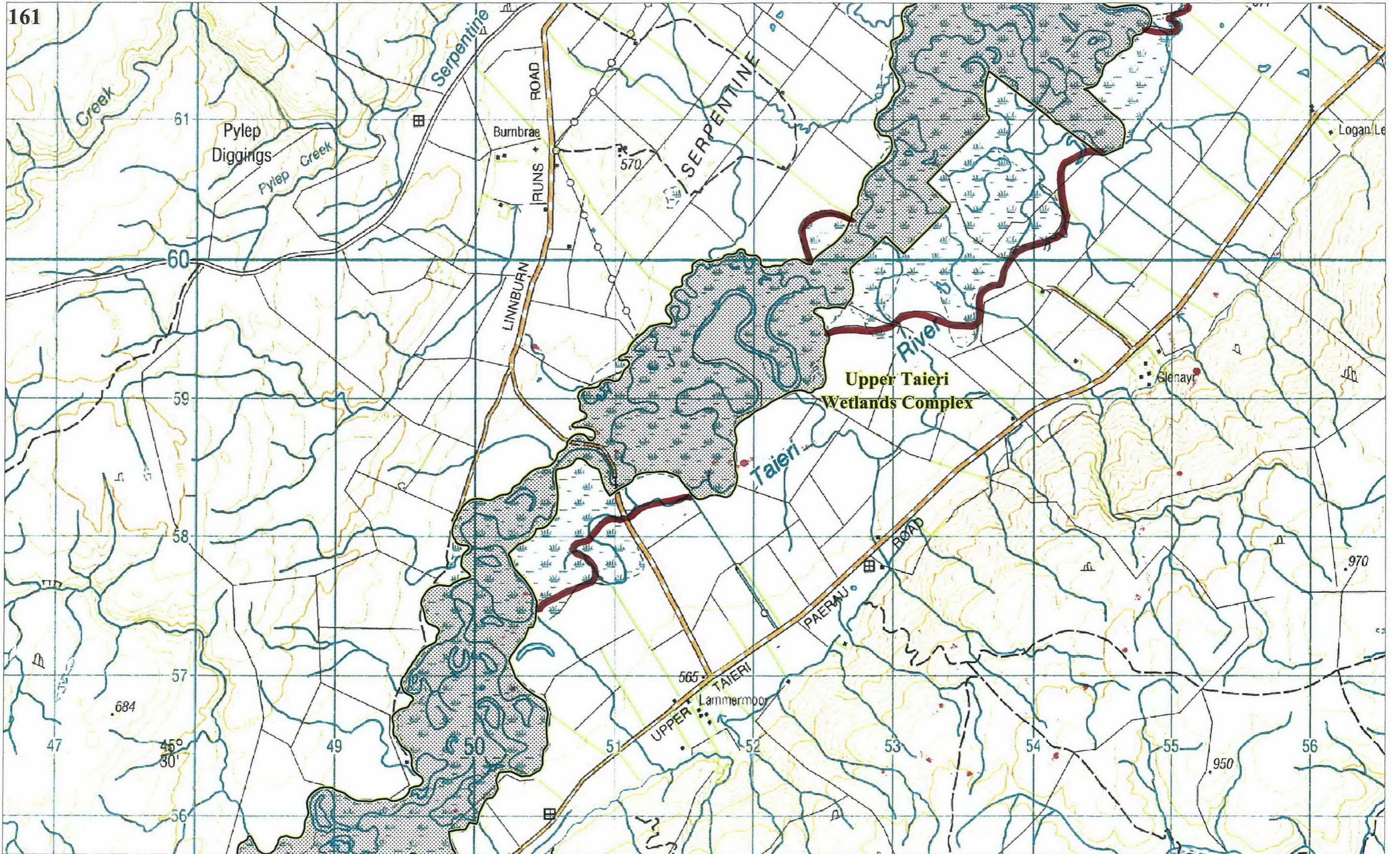
Sourced from LINZ data, Crown and Critchlow Copyright reserved.

Proposed Plan Change 2

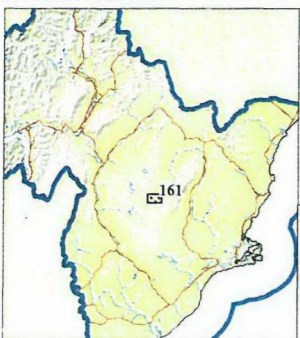
Regionally Significant Wetlands

Map F26

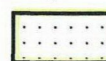




Basemap: Land Information New Zealand Topo50 Maps
Notified 2 July 2011



Key

 Regionally significant wetland



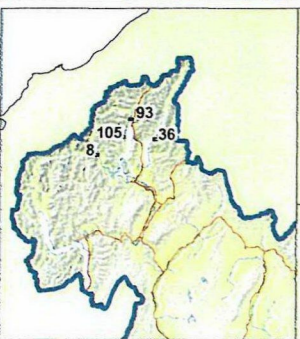
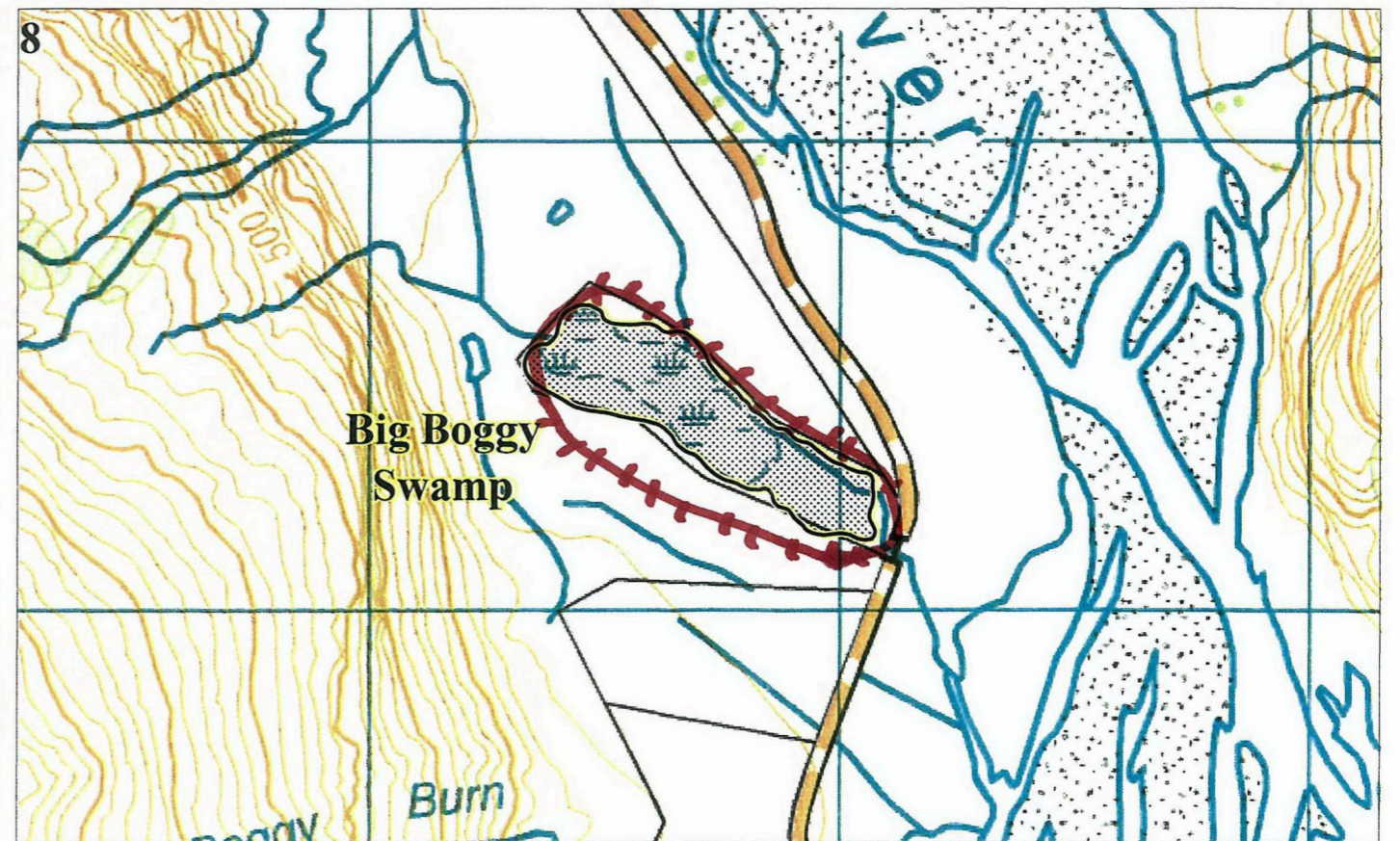
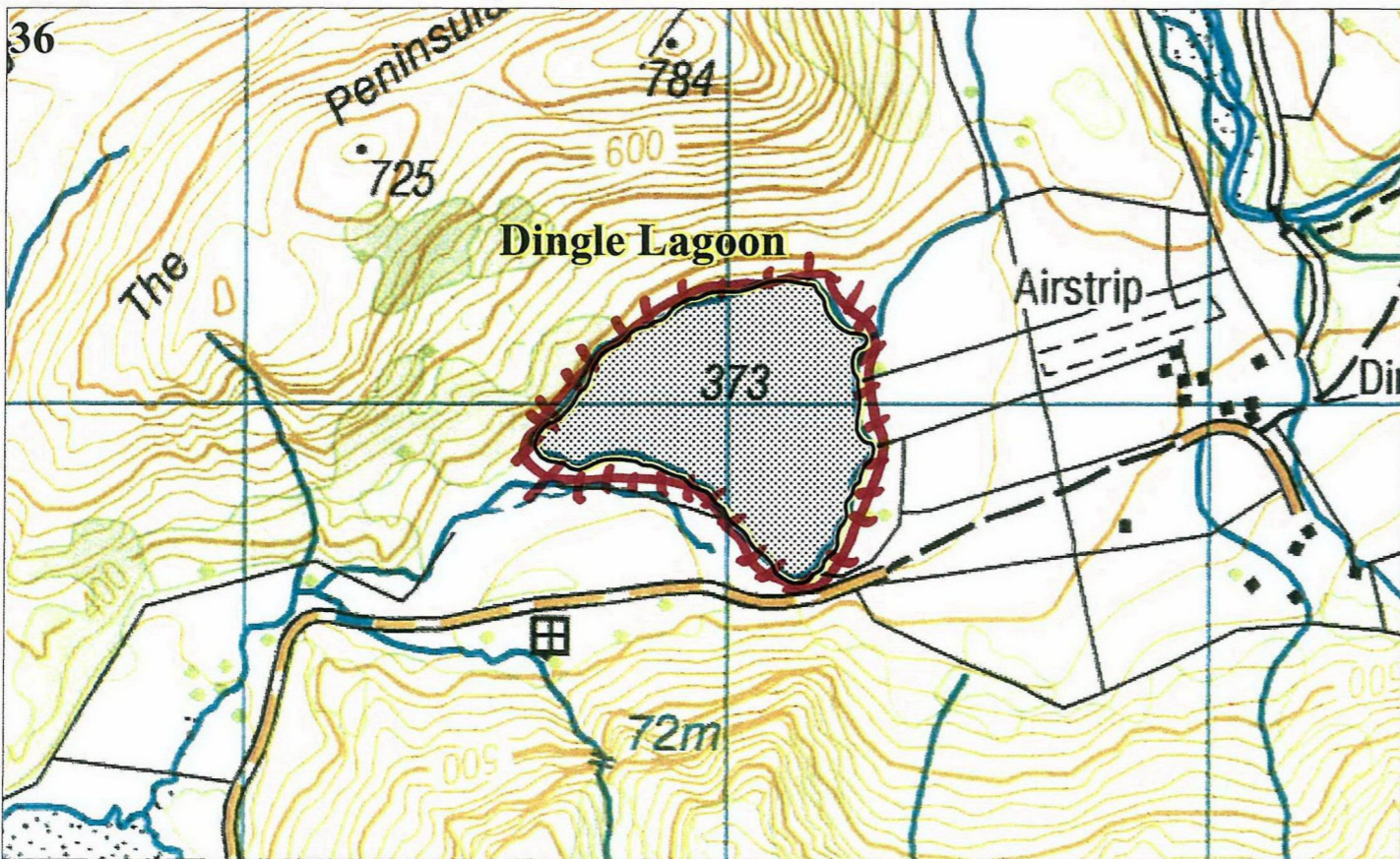
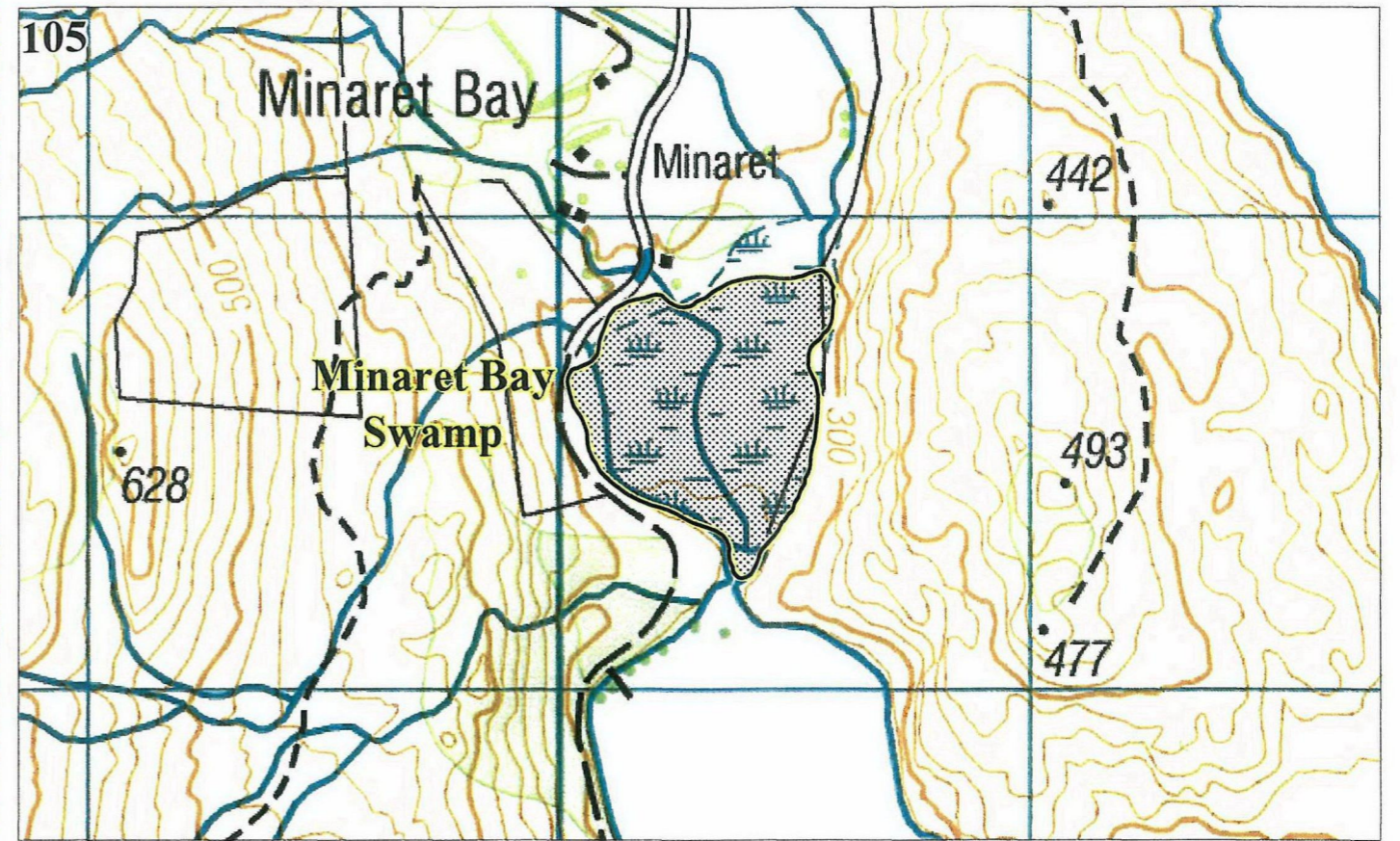
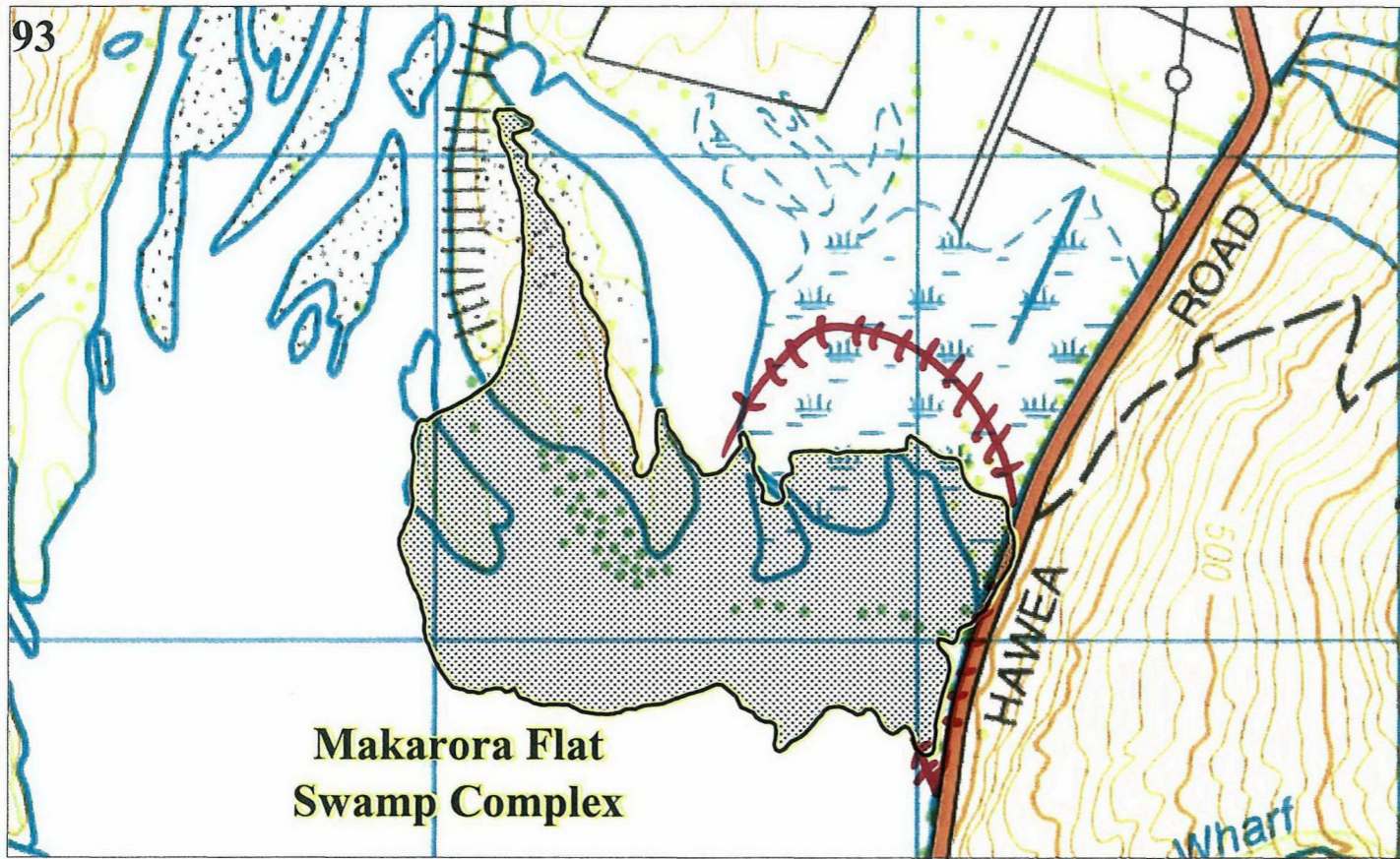
Sourced from LINZ data, Crown and Critchlow Copyright reserved.

Proposed Plan Change 2

Regionally Significant Wetlands

Map F27





Key

Regionally significant wetland




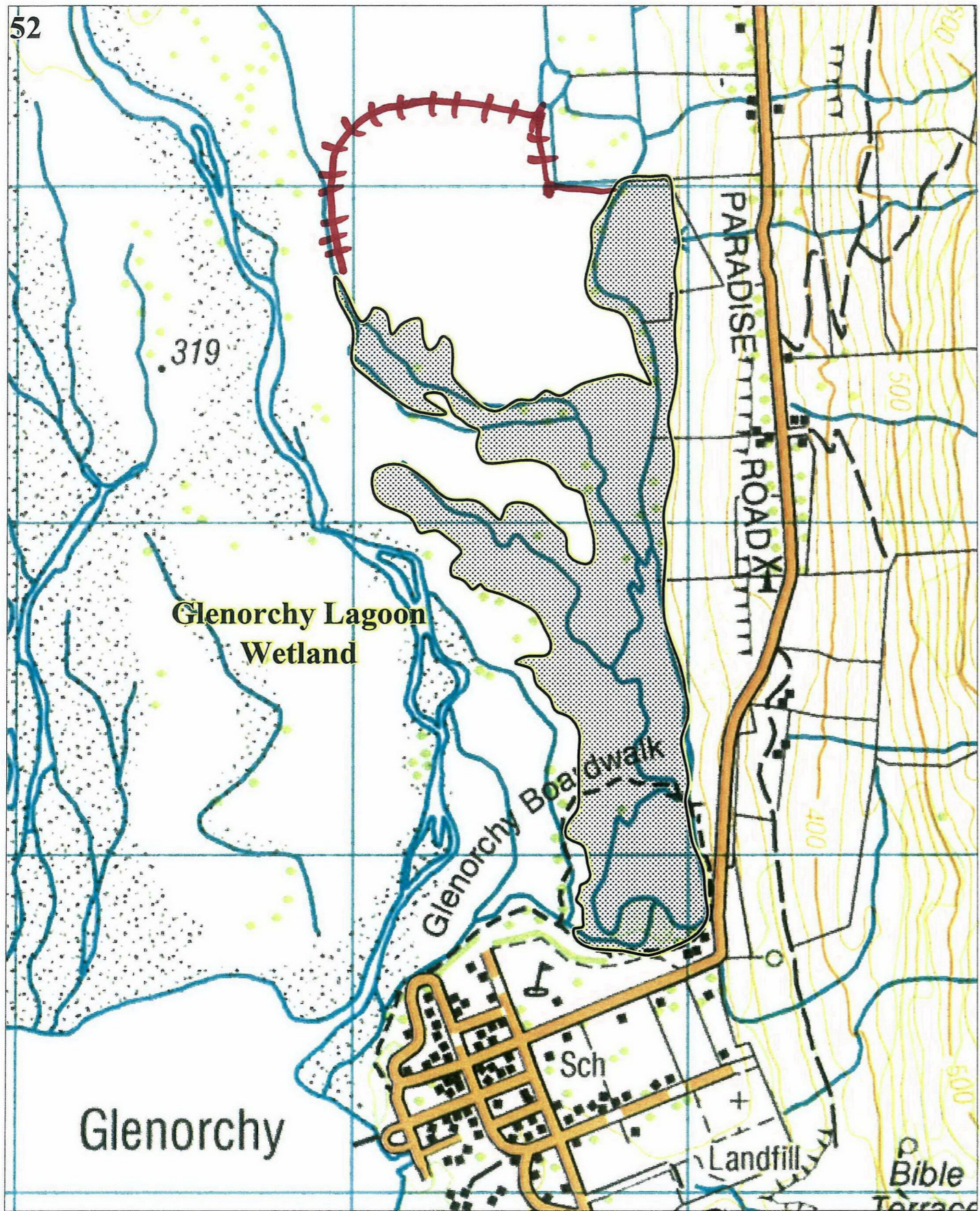
Sourced from LINZ data, Crown and Critchlow Copyright reserved.

**Proposed Plan Change 2
Regionally Significant Wetlands
Map F1**

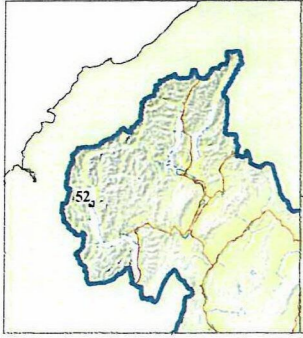
Basemap: Land Information New Zealand Topo50 Maps
Notified 2 July 2011

*Proposed
amended
boundary*

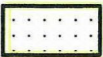


Proposed amended boundary



Key

 Regionally significant wetland

0.25 0 0.25 0.5
kilometres

Sourced from LINZ data, Crown and Critchlow Copyright reserved.

Proposed Plan Change 2 Regionally Significant Wetlands Map F9

Basemap: Land Information New Zealand Topo50 Maps
Notified 2 July 2011

