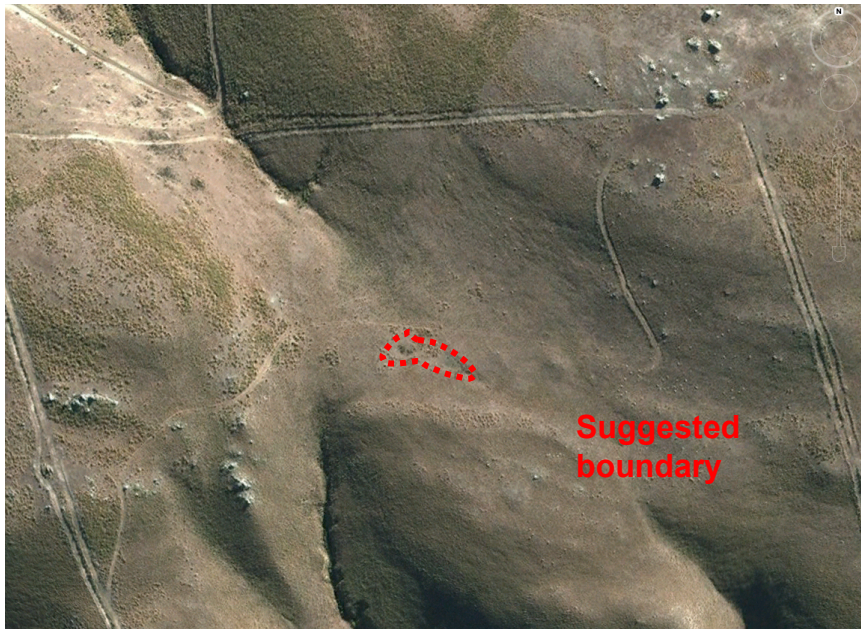


Wetland boundaries

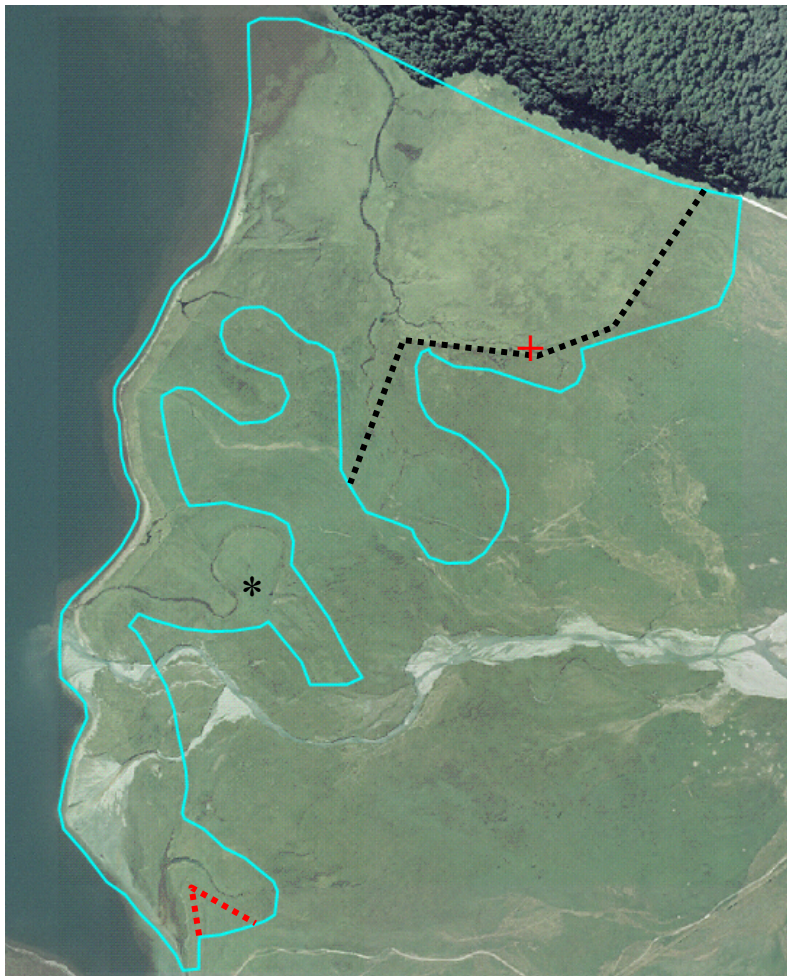
Trig Q Ephemeral Pool

The provided wetland boundary is approximate only. The actual wetland is much smaller and slightly to the southwest (see below).



Diamond Lake

The boundaries to the wetland appear to have been drawn to include parts of the major tributaries flowing into Diamond Lake. The boundaries encompass areas of highest botanical value, but also include some areas of rough pasture. Areas to the east of the main fence line (approximately shown, black dotted line) could be removed from the significant area, but this may reduce the A9 values present. In addition, the *Olearia lineata* specimen observed (+, approximate position) would then be located right on the wetland boundary. However, the fence may provide sufficient protection for this species. A small area at the south of the site is also dominated by pasture species and could be removed (red dotted line). The central parts of the wetland (*) were not visited.



Lake Reid Wetland

Two areas could be removed from the significant area of this wetland. In the east are dryland habitats, and in the southeast (and east of the fence line) is pasture (see map below).

