

# F Series Maps Index 1

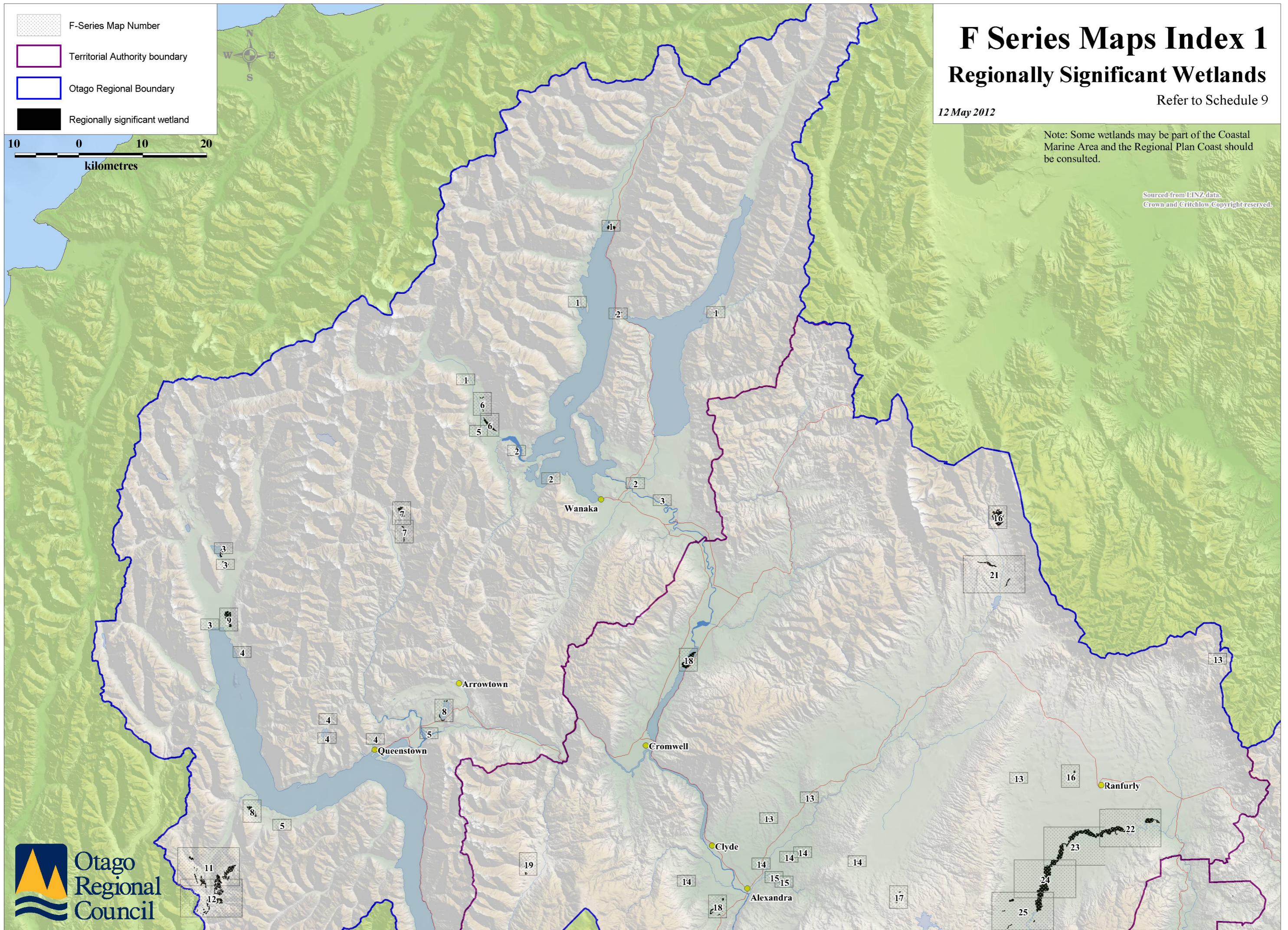
## Regionally Significant Wetlands





Refer to Schedule 9

12 May 2012

Note: Some wetlands may be part of the Coastal Marine Area and the Regional Plan Coast should be consulted.

Sourced from LINZ data.  
Crown and Crichtlow Copyright reserved.



-  F-Series Map Number
-  Territorial Authority boundary
-  Otago Regional Boundary
-  Regionally significant wetland

10 0 10 20  
kilometres

