

# APPENDIX 1

## **Proposed Plan Change 5A (Lindis: Integrated Water Management)**

### **CONSULTATION DRAFT**

# **Regional Plan: Water for Otago**

ii Consultation draft for Proposed Plan Change 5A (Lindis: Integrated Water Management)  
to the Regional Plan: Water for Otago

April 2014

## Introduction

The Otago Regional Council has prepared Proposed Plan Change 5A (Lindis: Integrated water management) to the Regional Plan: Water for Otago. Proposed Plan Change 5A:

- Sets a management regime (allocation limits and minimum flow) for surface water and connected groundwater in the Lindis catchment;
- Sets maximum allocation volumes for specified aquifers within the Bendigo-Tarras Basin;
- Maps the minimum flow catchment boundaries and monitoring site associated with the Lindis River in the B-series of the Water Plan Maps; and
- Maps the boundaries of the Lower Tarras, Bendigo and Ardgour Valley Aquifers; and amending the boundaries of the Lindis Alluvial Ribbon Aquifer in the C-series of the Water Plan Maps.

This document should be read in conjunction with:

- Section 32 Report – Evaluation Report; and
- The Regional Plan: Water for Otago operative as at 1 October 2013.

Amendments to the Regional Plan: Water as a result of Proposed Plan Change 5A are shown as follows: (additions underlined, deletions ~~struck out~~).

Any person may make comments on this consultation draft. You may do so by sending written comments to the Otago Regional Council, or by telephone.

Post to	Otago Regional Council Private Bag 1954 Dunedin 9054
Fax to	(03) 479 0015
Email to	<a href="mailto:policy@orc.govt.nz">policy@orc.govt.nz</a>
Deliver to	Otago Regional Council 70 Stafford Street William Fraser Building Dunedin Dunorling Street Alexandra The Station, First Floor Cnr Shotover and Camp Streets Queenstown
Telephone	(03) 474 0827; 0800 474 082

**Comments will be received until 5pm on Friday 23 May 2014.**



## Table of Contents

<b>Ref 1..... Policy 6.4.5 (pages 6-21 to 6-23 of plan*).....</b>	<b>2</b>
<b>Ref 2..... Rule 12.1.4.4 (pages 12-9 to 12-10 of plan) .....</b>	<b>6</b>
<b>Ref 3..... Schedule 2 (pages 20-59 to 20-63 of plan) .....</b>	<b>10</b>
<b>Ref 4..... Schedule 4 (pages 20-66 to 20-67 of plan) .....</b>	<b>15</b>
<b>Ref 5..... Minor and consequential changes.....</b>	<b>18</b>
<b>Ref 6..... Maps.....</b>	<b>20</b>

\* Regional Plan: Water for Otago operative as at 1 October 2013.



# 6

## Water Quantity



## 6.1 to 6.3 *[Unchanged]*

## 6.4 Policies applying to the management of the taking of water

### 6.4.0 to 6.4.4 *[Unchanged]*

**6.4.5** The minimum flows established by Policies 6.4.3, 6.4.4, 6.4.6, 6.4.9 and 6.4.10 will apply to resource consents for the taking of water, as follows:

- (a) In the case of new takes applied for after 28 February 1998, upon granting of the consent; and
- (b) In the case of any resource consent to take water from within the Taieri above Paerau and between Sutton and Outram, Welcome Creek, Shag, Kakanui, Water of Leith, Lake Hayes, Waitahuna, Trotters, Waianakarua and Lake Tuakitoto catchment areas as defined in Schedule 2A, subject to the review of consent conditions under Sections 128 to 132 of the Resource Management Act; and
- (c) In the case of any existing resource consent to take water from the Lindis catchment area, Luggate catchment area, Manuherikia catchment area (upstream of Ophir) and the Taieri catchment areas Paerau to Waipiata, Waipiata to Tiroiti, and Tiroiti to Sutton, as defined in Schedule 2A, upon collective review of consent conditions within those catchments under Sections 128 to 132 of the Resource Management Act; and
- (d) In the case of any existing resource consent to take water within a catchment area not specified in Schedule 2A, upon the establishment of a minimum flow set for the water body by a plan change, subject to the review of consent conditions under Sections 128 to 132 of the Resource Management Act.

### **Explanation**

This policy provides for the application of minimum flows to consents as follows:

1. New takes are subject to minimum flow provisions when the consent is granted.
2. For resource consents to take from rivers within catchments specified in Schedule 2A, except for the Lindis, Luggate, Manuherikia (upstream of Ophir) and the Taieri between Paerau and Sutton, the minimum flow provisions apply, subject to the review of consent conditions under Sections 128 to 132 of the RMA.
3. For the Lindis, Luggate, Manuherikia (upstream of Ophir) and the Taieri between Paerau and Sutton, the minimum flows will not apply until after a collective review of the consents in the catchments. This will occur before 2021 if there is agreement by the holders of mining privileges (deemed permits) to adhere to the minimum flows, or on the expiry of the mining privileges on 2 October 2021. Where environmental benefit will result from applying minimum flows to any



resource consents (other than deemed permits) in these catchments, the review of those resource consent conditions may also occur earlier.

4. For resource consents to take from rivers within catchments not specified in Schedule 2A, the minimum flow provisions will apply from the operative date of a plan change setting the minimum flow for the river, subject to the review of consent conditions under Sections 128 to 132 of the RMA.

Reviews under Section 128 of the Resource Management Act will be undertaken simultaneously on all reviewable takes within each catchment, in the interests of equity.

In the case of mining privileges in respect of water (deemed permits, see Appendix 2) the Resource Management Act provides for their continuation without restriction, unless compensation is made, until they expire in 2021. However, arrangements for the conversion of such permits to resource consents may be developed before that time. Alternatively, arrangements for voluntary adherence by deemed permit holders to the minimum flows may occur. Under voluntary arrangements, or conversion of deemed permits to resource consents, or in 2021, these resource consents or deemed permits will become subject to the minimum flows established by this Plan.

The process of consent review must be completed by 2 October 2021, allowing coordination with the review of any deemed permits that may be operating in an area.

#### **Principal reasons for adopting**

This policy is adopted to enable the minimum flow provisions of the Plan to be applied as soon as practicable to existing resource consents to take water.

In the Lindis catchment area, Luggate catchment area, Manuherikia catchment area (upstream of Ophir) and Taieri catchment areas between Paerau and Sutton, there is a very high proportion of mining privileges. Therefore the application of minimum flows to resource consents may be timed to coincide with their application to deemed permits (either through voluntary methods or in 2021). Where environmental benefit will result from applying minimum flows to any resource consents (other than deemed permits) in these catchments, the review of those resource consent conditions may also occur earlier.

In unscheduled catchments the minimum flows, once established and set by a plan change, will be applied to the reviewable consents in those catchments.

This will ensure that restricting water takes will result in actual environmental benefits.

*Rules: 12.1.4.2 to 12.1.5.1*

*Other methods: 15.9.1.3, 15.9.1.4*

**6.4.6 to 6.7.8**      *[Unchanged]*

# 12

## Rules: Water Take, Use and Management



## 12.0. [Unchanged]

### 12.1.1 to 12.1.3 [Unchanged]

### 12.1.4 Restricted discretionary activities: Resource consent required

#### 12.1.4.1 to 12.1.4.3 [Unchanged]

12.1.4.4 Taking and use of surface water as primary allocation applied for prior to 28 February 1998 in the following Schedule 2A catchments:

Lindis Catchment (Map B6)

Luggate Catchment (Map B1a),

Manuherikia Catchment Upstream of Ophir (Maps B2 and B4),

Taieri Catchment Paerau to Waipiata (Maps B2 and B4),

Taieri Catchment Waipiata to Tiroiti (Maps B2, B3 and B4), and

Taieri Catchment Tiroiti to Sutton (Maps B3 and B4):

- (i) This rule applies to the taking of surface water, as primary allocation, in the above catchment areas, if the taking was the subject of a resource consent or other authority:
  - (a) Granted before 28 February 1998; or
  - (b) Granted after 28 February 1998, but was applied for prior to 28 February 1998; or
  - (c) Granted to replace a resource consent or authority of the kind referred to in paragraph (a) or (b).
- (ii) Unless covered by Rule 12.1.1A.1, the taking and use of surface water to which this rule applies is a **restricted discretionary** activity. The matters to which the Otago Regional Council has restricted the exercise of its discretion are set out in Rule 12.1.4.8.
- (iii) The minimum flows set out in Schedule 2A of this Plan for the above catchments shall affect the exercise of every resource consent or other authority, of the kind referred to in paragraph (i) of this rule, in the Luggate catchment area, Manuherikia catchment area (upstream of Ophir), Lindis catchment area and Taieri catchment areas Paerau to Waipiata, Waipiata to Tiroiti and Tiroiti to Sutton, upon review of consent conditions.
- (iv) The conditions of all such consents will be reviewed by the Otago Regional Council under Sections 128 to 132 of the Act to enable the minimum flows set by Schedule 2A to be met, the volume and rate of take to be measured in accordance with Policy 6.4.16 and the taking to be subject to Rule 12.1.4.9.
- (v) The minimum flows set in Schedule 2A for the Luggate catchment area, Manuherikia catchment area (upstream of

Ophir), Lindis catchment area and Taieri catchment areas Paerau to Waipiata, Waipiata to Tiroiti and Tiroiti to Sutton, shall not apply to any consents referred to in clause (i), paragraphs (a) to (c) of this rule until the review of consent conditions set out in clause (iv) of this rule occurs.

12.1.4.4A *[Repealed – 1 March 2012]*

12.1.4.5 to 12.1.4.9 *[Unchanged]*

**12.1.5 to 12.1.6** *[Unchanged]*

**12.2 to 12.11** *[Unchanged]*



# 20

## Schedules







## **2. Schedule of specified restrictions on the exercise of permits to take surface water**

This schedule provides specified minimum flows applying to the taking of surface water within primary and supplementary allocation from catchments identified in Maps B1 to B5~~6~~, and Welcome Creek. The schedule should be read in conjunction with the policies contained in section 6.4.

Schedule 2A specifies minimum flows that apply to the primary allocation water taken from the Shag, Kakanui, Welcome Creek, Water of Leith, Taieri, Lake Hayes, Manuherikia, Waitahuna, Waianakarua, Trotters, Lindis, Luggate and Lake Tuakitoto catchments, as identified in Maps B1 to B5. The last column of Schedule 2A also specifies the primary allocation limit in accordance with Policy 6.4.2(a) for the whole catchments of the rivers and lakes. The catchment areas for the primary allocation limits set by Policy 6.4.2(a) may be larger than those specified on Maps B1 to B5~~6~~.

Schedule 2B specifies minimum flows that apply to specified blocks of supplementary allocation for some catchments. Additional supplementary allocation may be granted under Policies 6.4.9 and 6.4.10.

Schedule 2 identifies minimum flows in litres per second and the site at which flows will be monitored. When the minimum flow is reached, consents to take water from the identified catchment will cease or will be suspended by the Otago Regional Council, in accordance with Policy 6.4.11 of this Plan. The flows listed in Schedule 2, which trigger suspension, use the instantaneous flow rates.

In accordance with Policy 6.4.1A, groundwater takes from aquifers listed in Schedule 2C and identified in the C-series maps, and other connected groundwater, are considered against primary or supplementary allocation provided for by Policies 6.4.2 and 6.4.9 and where listed in Schedules 2A and 2B, and may be subject to the minimum flows identified.

Schedule 2D identifies matters to be considered when making additions to these schedules through a plan change.

SCHEDULE 2: SPECIFIED RESTRICTIONS ON THE EXERCISE OF PERMITS TO TAKE WATER

**2A Schedule of specific minimum flows for primary allocation takes in accordance with Policy 6.4.3, and primary allocation limits in accordance with Policies 6.4.2(a) and 6.4.1A**

The following schedule:

1. Identifies the minimum flows that apply to the taking of surface water, which includes groundwater managed as surface water in terms of Policy 6.4.1A within primary allocation from the catchments shown in Maps B1 to B56, Welcome Creek and aquifers shown in the C-series maps. Maps B1– B56 identify the location of catchment area boundaries and numbered monitoring sites referred to in the schedule for setting and measuring the minimum flows.
2. Specifies the primary allocation limit in accordance with Policy 6.4.2(a). That limit is exceeded in catchments where the consented takes as at 28 February 1998 (or 19 February 2005 in the Welcome Creek catchment, or 7 July 2000 in the Waianakarua catchment) set a higher limit in accordance with Policy 6.4.2(b). The catchments in which the limit set by Policy 6.4.2(a) is exceeded by Policy 6.4.2(b) (as at ~~20 December 2008~~ 1 April 2014) are the Shag, Kakanui, Taieri, Lake Hayes, Lindis, Luggate and Manuherikia.

<b>Catchment</b> See Maps B1- B56	<b>Monitoring Site</b> (with MS number) See Maps B1– B56	<b>Minimum flow</b> (litres per second – instantaneous flow)	<b>Primary Allocation Limits in accord with Policy 6.4.2(a)</b> (litres per second – instantaneous flow)
<b>Welcome Creek catchment</b>	Steward Road	600	600 <i>Welcome Creek catchment from mouth to headwaters (Also subject to Table 12.1.4.2)</i>
<b>Kakanui catchment</b> <b>(a) October to April inclusive</b>	Mill Dam (MS 3) and McCones (MS 3b)	250 (300 for secondary permits) If 250 breached, flow must return to 400 before taking can recommence.	750 <i>Kakanui catchment from mouth to headwaters excluding the Waiareka Creek and Island Stream catchments.</i>
<b>(b) May to September inclusive</b>	Clifton Falls (MS 3a) Mill Dam (MS 3) and McCones (MS 3b)	400 for primary and secondary permits	
<b>Waianakarua catchment</b>	Browns Pump (MS 13)	200 (October to April)  400 (May to September)	190 <i>Waianakarua catchment from mouth to headwaters</i>
<b>Trotters catchment</b>	Mathesons Weir (MS 12)	10 (October to April)  35 (May to September)	15 <i>Trotters catchment from mouth to headwaters</i>

SCHEDULE 2: SPECIFIED RESTRICTIONS ON THE  
EXERCISE OF PERMITS TO TAKE WATER

<b>Catchment See Maps B1- B56</b>	<b>Monitoring Site (with MS number) See Maps B1– B56</b>	<b>Minimum flow (litres per second – instantaneous flow)</b>	<b>Primary Allocation Limits in accord with Policy 6.4.2(a) (litres per second – instantaneous flow)</b>
<b>Shag catchment</b> (both minimum flows apply)	Goodwood Pump (MS 1) Craig Road (MS 2)	28 150	280 <i>Shag catchment from mouth to headwaters</i>
<b>Water of Leith catchment</b>	Water of Leith at University Footbridge (MS 4)	94	140 <i>Water of Leith catchment from mouth to headwaters</i>
<b>Taieri River upstream of Paerau</b>	Paerau Dam (MS 5a)	850	4860 <i>Taieri River catchment from mouth to headwaters.</i>
<b>Taieri River catchment between Paerau and Waipiata</b>	Taieri River at Waipiata (MS 5)	1000	
<b>Taieri River catchment between Waipiata and Tiroiti</b>	Taieri River at Tiroiti (MS 5b)	1100	
<b>Taieri River catchment between Tiroiti and Sutton</b>	Taieri River at Sutton (MS 6)	1250	
<b>Taieri River catchment between Sutton and Outram</b>	Taieri River at Outram (MS 6a)	2500	
<b><u>Lindis River catchment</u></b>	<u>Lindis River at Ardgour Road (MS 14)</u>	<u>750 (October to November)</u> <u>450 (December to April)</u> <u>750 (May)</u> <u>1600 (June to September)</u>	<u>1000</u> <u><i>Lindis River catchment from mouth to headwaters</i></u>
<b>Luggate catchment</b>	SH6 Bridge (MS 11)	180 (November to April) 500 (May to October)	500 <i>Luggate catchment from mouth to headwaters</i>
<b>Lake Hayes catchment area</b>	Mill Creek at Fish Trap (MS 7)	180	260 <i>Lake Hayes catchment from lake outlet to headwaters</i>
<b>Manuherikia River catchment upstream of Ophir</b>	Manuherikia River at Ophir (MS 8)	820	3200 <i>Manuherikia catchment from mouth to headwaters</i>
<b>Waitahuna River catchment</b>	Waitahuna River at Tweeds Bridge (MS 9)	450	650 <i>Waitahuna catchment from mouth to headwaters</i>
<b>Lake Tuakitoto catchment</b>	Lovells Creek at SH1 (MS 10)	5	30 <i>Lake Tuakitoto catchment from mouth to headwaters</i>

SCHEDULE 2: SPECIFIED RESTRICTIONS ON THE EXERCISE OF PERMITS TO TAKE WATER

**2B Schedule of supplementary allocation blocks and specific minimum flows in accordance with Policy 6.4.9(c)**

<b>Catchment (See Maps B1– B56) &amp; Supplementary Block Number</b>	<b>Minimum Flow (litres per second – instantaneous flow) at the monitoring site(s) (See Maps B1– B56)</b>	<b>Supplementary Allocation Block (litres per second – instantaneous flow)</b>
<b>Welcome Creek catchment</b> (first supplementary allocation block)	1000 At Steward Road (MS 14)	400 <i>(Also subject to Table 12.1.4.2)</i>
<b>Kakanui catchment</b>	For each minimum flow listed below: 1. At Mill Dam (MS 3) for takes downstream of Clifton Falls monitoring site; or 2. At both Mill Dam (MS 3) and Clifton Falls (MS 3a) for takes upstream of Clifton Falls monitoring site.	
<b>Kakanui catchment</b> (first supplementary allocation block)	October to April: 1050	October to April: 300
	May to September: 1500	May to September: 500
<b>Kakanui catchment</b> (subsequent supplementary allocation blocks)	All subsequent minimum flows corresponding to supplementary allocation blocks in the Kakanui catchment will be based on the following formula:  October to April: $1050 + (300 \times \text{numberof supplementary allocation block}^*)$  May to September: $1500 + (500 \times \text{numberof supplementary allocationblock}^*)$  * 2 for the 2 <sup>nd</sup> , 3 for the 3 <sup>rd</sup> allocation block, and so on.	All subsequent supplementary allocation blocks in the Kakanui catchment will be based on the following sizes:  October to April: 300  May to September: 500
<b>Waianakarua catchment</b> (first supplementary allocation block)	311 At Browns Pump (MS 13)	100
<b>Trotters catchment</b> (first supplementary allocation block)	October to April: 30 at Mathesons Weir (MS 12)	15
	May to September: 50 at Mathesons Weir (MS 12)	15
<b>Trotters catchment</b> (second supplementary allocation block)	October to April: 60 at Mathesons Weir (MS 12)	30
	May to September: 80 at Mathesons Weir (MS 12)	30
<b>Trotters catchment</b> (third supplementary allocation block)	October to April: 90 at Mathesons Weir (MS 12)	30
	May to September: 110 at Mathesons Weir (MS 12)	30

SCHEDULE 2: SPECIFIED RESTRICTIONS ON THE  
EXERCISE OF PERMITS TO TAKE WATER

<b>Catchment (See Maps B1– B56) &amp; Supplementary Block Number</b>	<b>Minimum Flow (litres per second – instantaneous flow) at the monitoring site(s) (See Maps B1–B56)</b>	<b>Supplementary Allocation Block (litres per second – instantaneous flow)</b>
<b>Shag catchment</b> (first supplementary allocation block)	650 At Craig Road (MS 2)  401 At Goodwood Pump (MS 1)	100
<b>Shag catchment</b> (second supplementary allocation block)	750 At Craig Road (MS2)  501 At Goodwood Pump (MS1)	100
<b><u>Lindis catchment</u></b> (first supplementary allocation block)	<u>May to November: 2200</u> <u>At Ardgour Road (MS 14)</u>	500
	<u>December to April: 1600</u> <u>At Ardgour Road (MS 14)</u>	500
<b><u>Lindis catchment</u></b> (second supplementary allocation block)	<u>May to November: 2700</u> <u>At Ardgour Road (MS 14)</u>	500
	<u>December to April: 2100</u> <u>At Ardgour Road (MS 14)</u>	500

**2C Schedule of aquifers where groundwater takes are to be considered as primary allocation, and subject to minimum flows of specified catchments in accordance with Policy 6.4.1A**

<b>Aquifer Name</b>	<b>Map Reference</b>	<b>Catchment to which primary or supplementary allocation limits apply, and minimum flows may apply*</b>
<b>Kakanui-Kauru Alluvium Aquifer</b>	C10	Kakanui catchment*
<b>Shag Alluvium Aquifer</b>	C11	Shag catchment*
<b>Lindis Alluvial Ribbon Aquifer</b>	C1b	Lindis catchment**
<b>Cardrona Alluvial Ribbon Aquifer</b>	C1a	Cardrona catchment upstream of the Mount Barker recorder site**
<b>Lowburn Alluvial Ribbon Aquifer</b>	C3	Lowburn Stream**

\* as given in Schedules 2A and 2B.

\*\* as provided for by Policies 6.4.2, 6.4.3 and 6.4.9.

SCHEDULE 4: SPECIFIED RESTRICTIONS ON THE EXERCISE OF PERMITS TO TAKE GROUNDWATER

**4. Schedule of specified restrictions on the exercise of permits to take groundwater**

This schedule sets out restrictions that apply to the taking of groundwater from certain aquifers in Otago.

Schedule 4A identifies maximum allocation volumes for the taking of groundwater from aquifers identified in the C-series maps, in accordance with Policy 6.4.10A(a)(i) of this Plan. Schedule 4B identifies water levels at which the taking of groundwater will be restricted in accordance with Policy 6.4.10A(b) of this Plan. Schedule 4C identifies matters to be considered when making additions to these schedules through a plan change.

**4A Maximum allocation volumes for groundwater takes from aquifers**

Aquifer Name	Map Reference	Maximum Allocation Volume (million cubic metres per year)
<u>Ardgour Valley Aquifer</u>	<u>C1b</u>	<u>0.1896</u>
<u>Lower Tarras Aquifer</u>	<u>C1b</u>	<u>29</u>
<u>Bendigo Aquifer</u>	<u>C1c</u>	<u>18.8</u>
North Otago Volcanic Aquifer	C10	7

**4B [Unchanged]**

**Table of minor and consequential changes**

Plan Provision	Detail of proposed change			
Page numbers	Update page numbers.			
Footers	Change footer to read “ <u>Regional Plan: Water for Otago (Updated to &lt;date to be inserted&gt;)</u> ”.			
Title page	Change the date to read “ <u>Updated to &lt;date to be inserted&gt;</u> ”.			
ISBN number	Obtain new ISBN numbers for Regional Plan: Water for Otago.			
Chronicle of key events	Add the following to the end of table:			
	<b>Key event</b>	<b>Date notified</b>	<b>Date decisions released</b>	<b>Date operative</b>
	<u>Plan Change 5A (Lindis: Integrated Water Management) to the Regional Plan: Water</u>	<Date to be inserted>	<Date to be inserted>	<Date to be inserted>
section 1.4	<u>Proposed Plan Change 5A (Lindis: Integrated Water Management) sets a minimum flows and allocation limits for the Lindis River and sets maximum allocation volumes for the Ardgour Valley, Lower Tarras and Bendigo Aquifers. It was notified on ..., and a total of ... submissions and ... further submissions were received. Following the hearing, decisions on submissions received were released on ... . Plan Change 5A was made operative on ... .</u>			
Plan Maps:	Amend “Map B Index – Minimum Flow Catchment Boundaries and Monitoring Sites” to include the new Map B6.  Amend “Map C Index – Aquifers, Groundwater Protection Zones and Seawater Intrusion Risk Zones” to include new Map C1c			

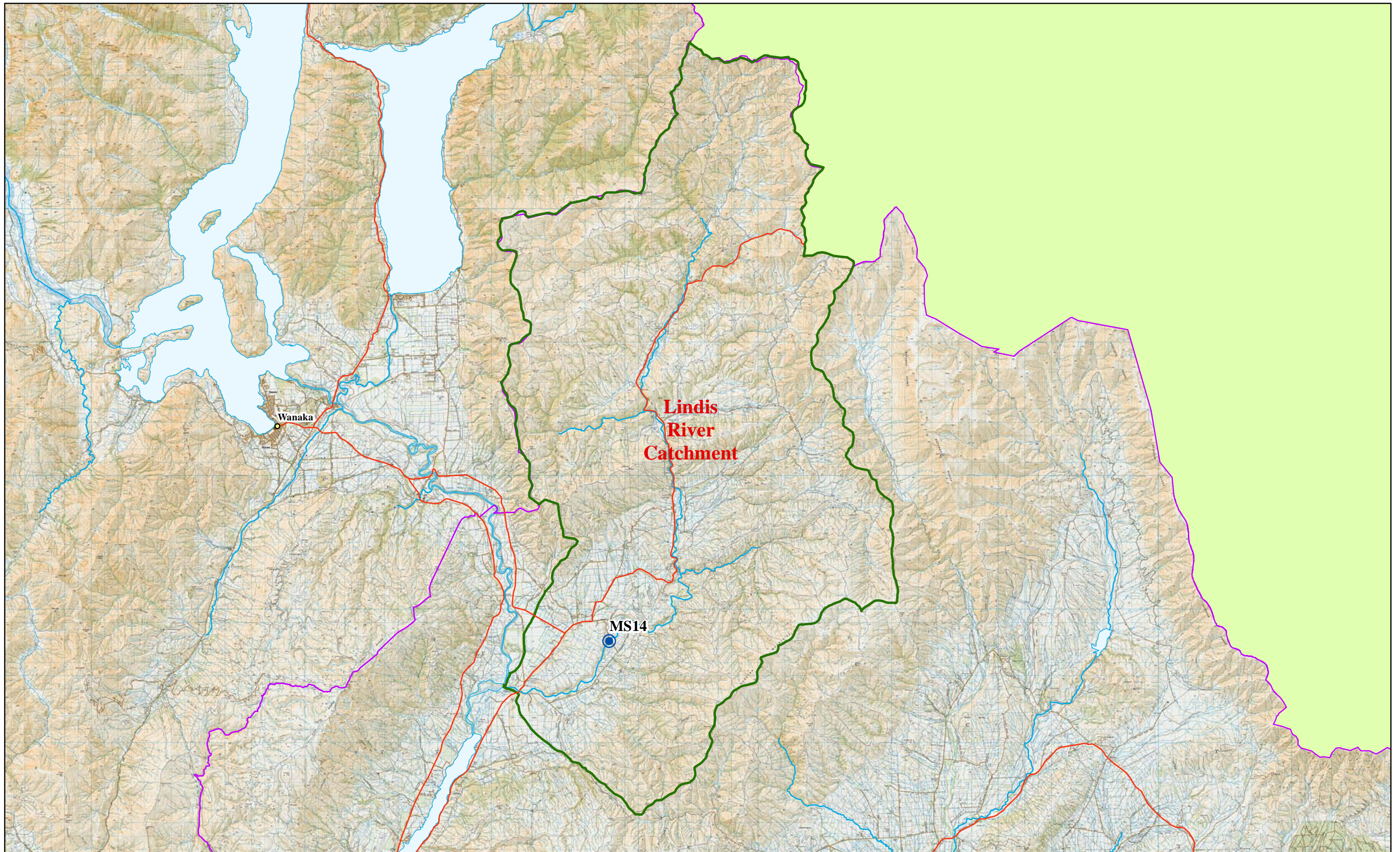




# **Regional Plan: Water for Otago**

# **Maps**









Basemap: Land Information New Zealand Topo50 Maps


Plan Change 5A (Lindis: Integrated Water Management)  
 Consultation Draft – April 2014



**Key**

-  Monitoring Site
-  Catchment Boundary
-  Otago Regional Boundary





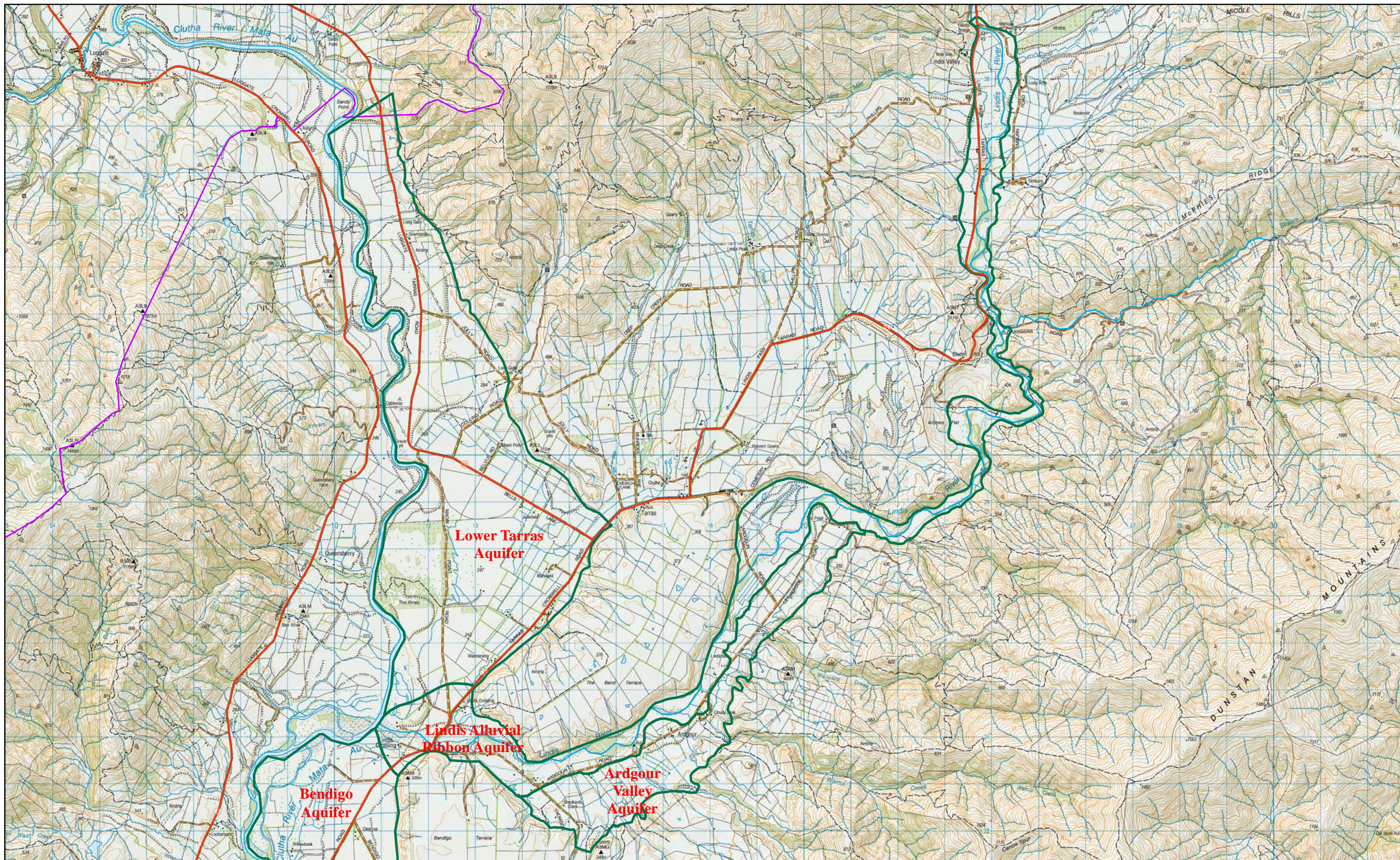
Sourced from LINZ data, Crown Copyright reserved.

# Minimum Flow Catchment Boundaries and Monitoring Sites

## B6







**Key**

- Aquifer Boundary
- Otago Regional Boundary

Sourced from LINZ data, Crown Copyright reserved.

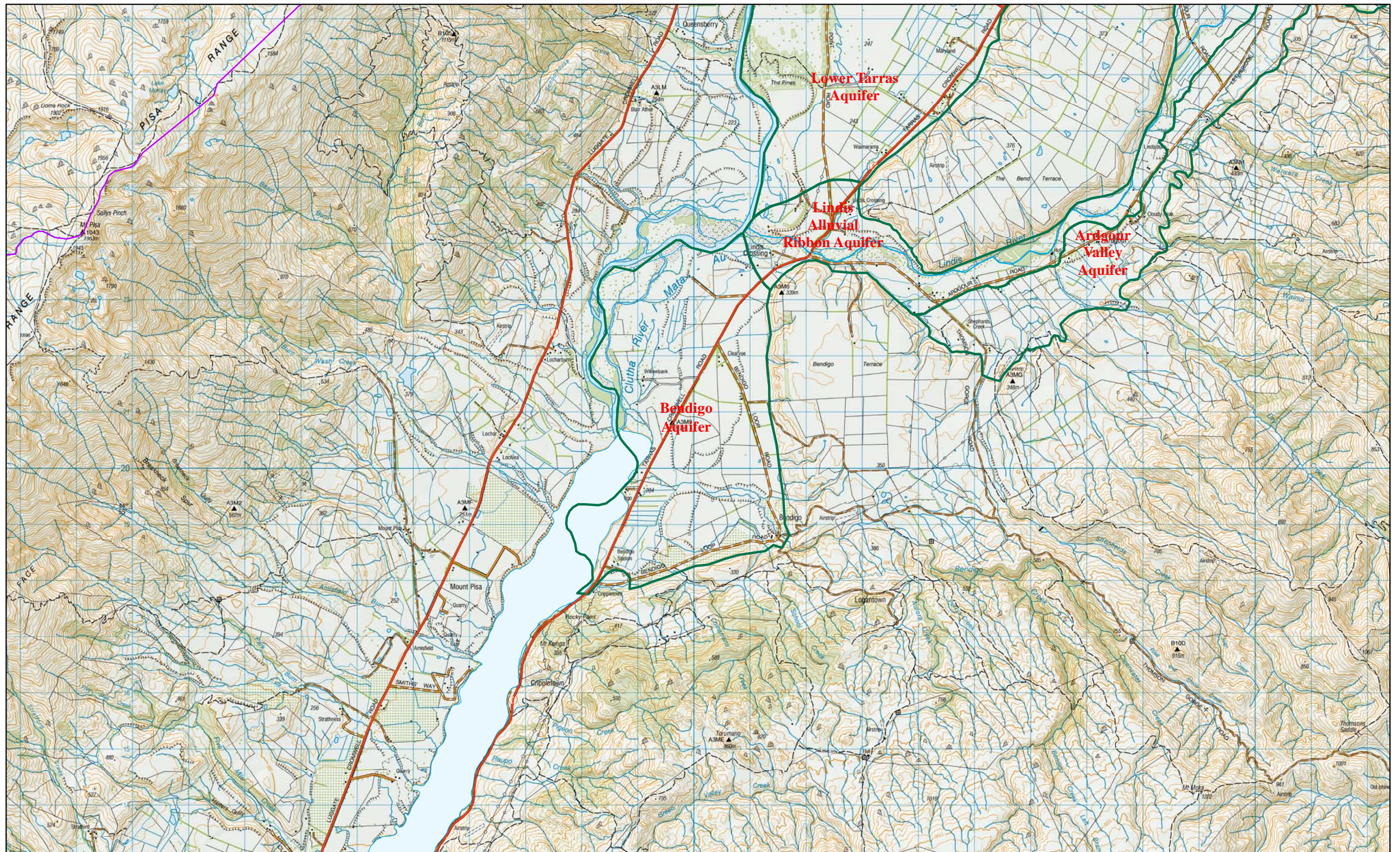
# Lindis Alluvial Ribbon, Lower Tarras and Ardgour Valley Aquifers

## Map C1b

Basemap: Land Information New Zealand Topo50 Maps  
 Plan Change 5A (Lindis: Integrated Water Management)  
 Consultation Draft – April 2014







**Key**

- Aquifer Boundary
- Otago Regional Boundary

Sourced from LINZ data, Crown Copyright reserved.

# Bendigo Aquifer

## Map C1c

Basemap: Land Information New Zealand Topo50 Maps

Plan Change 5A (Lindis: Integrated Water Management)  
 Consultation Draft – April 2014

