

# Integrated Water Management in the Lindis Catchment



## Tonight:

1. Aims / shift of focus
2. Groundwater and its connection to the river
3. Potential social & economic impacts on community
4. Issues & aims - panel discussion

# Where to from here...



**Next Meeting – May 2011  
Consultation paper (draft)**

- Suggested management regime
  - *Costs and benefits*
- Other options



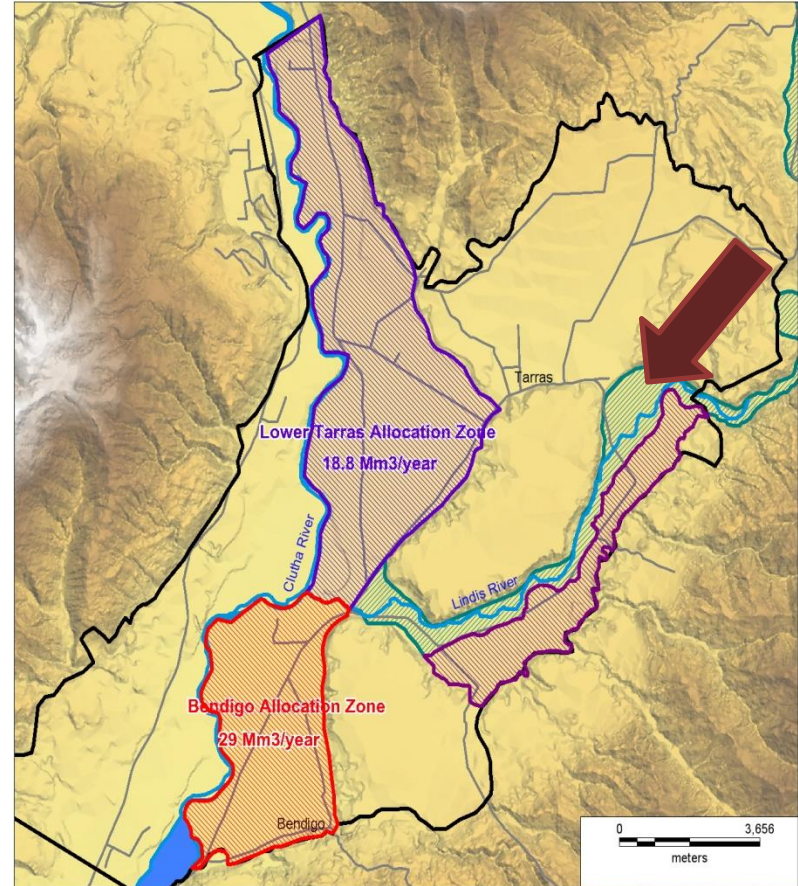
**Notify proposed plan change  
– mid September 2011**

**RMA process**

**Changes put into effect**

# Lindis Alluvial Ribbon Aquifer

- Effective from April 2010 (PC1C)
- Implications
  - GW takes within aquifer are managed as surface water
  - GW takes are included in primary allocation
  - Takes are subject to surface water restrictions i.e. minimum flows and rationing
  - Permitted taking for domestic and stock water are excluded





# Sources of water

- Current availability of water:
  - Lindis River (*fully allocated*)
  - Lindis Alluvial Ribbon Aquifer (*fully allocated*)
  - Ardgour Valley allocation zone (*depends on location*)
  - Clutha River (*allocation available*)
  - Tarras allocation zone (*allocation available*)
  - Bendigo allocation zone (*allocation available*)
- Need to management all these sources together - interconnected

