

# Appendix 1

## Maps, Photographs and Water Conservation Order

### Maps of Potential Discharge Locations

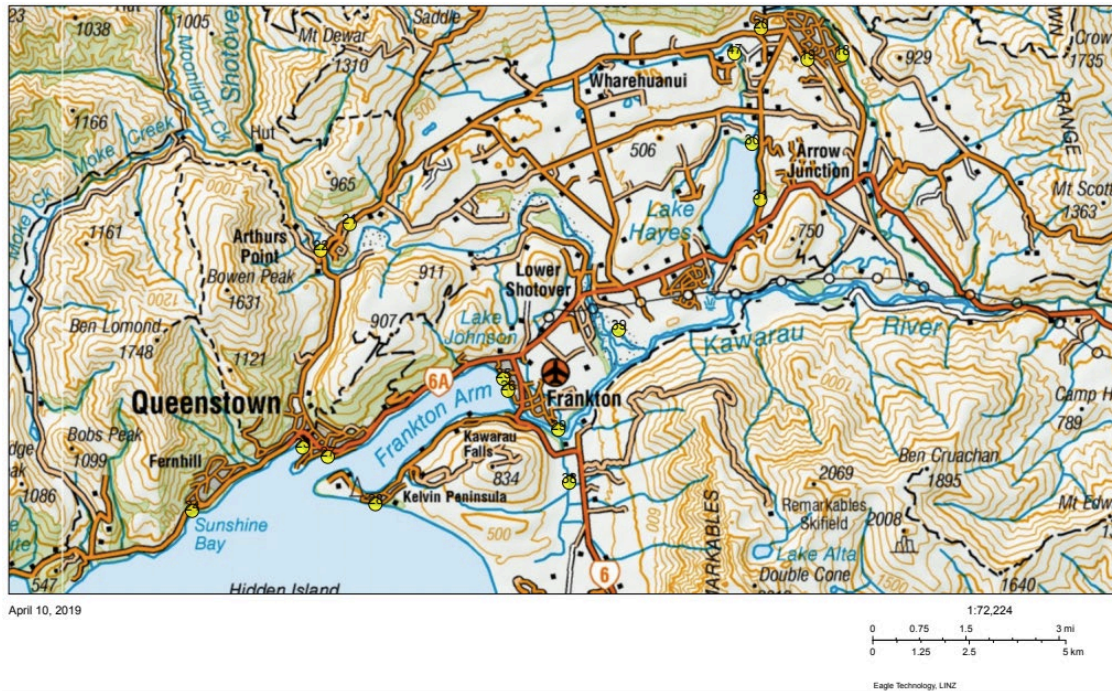


Figure 1: Locations of overflow sites in and near Queenstown and Lake Hayes. Source: ORC Maps.

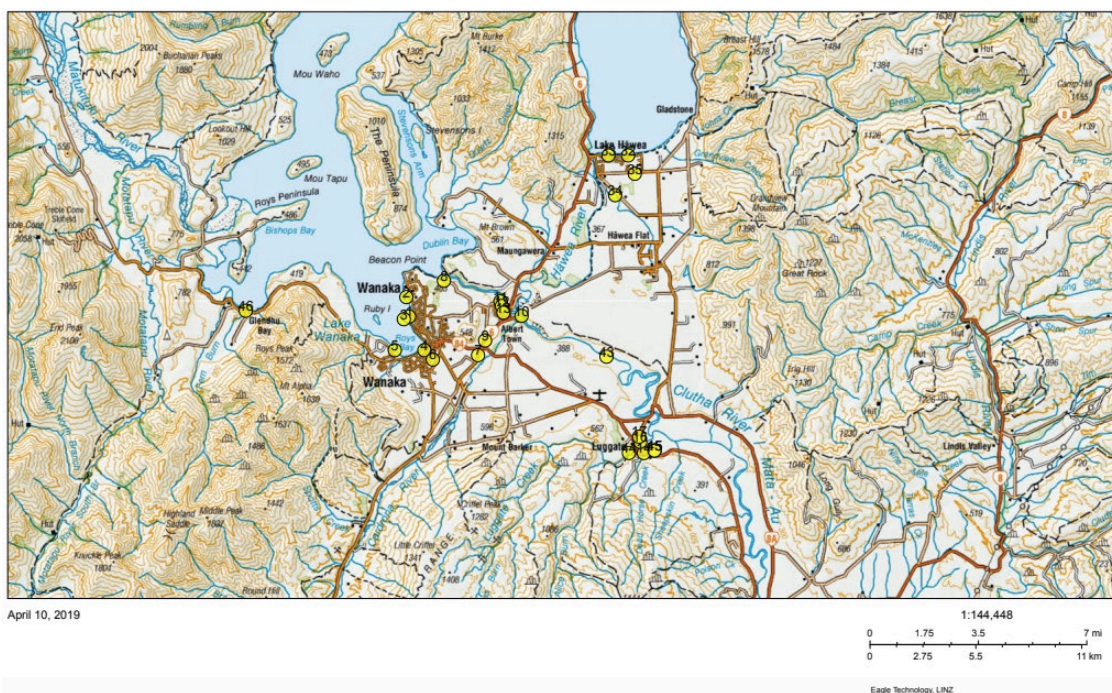


Figure 2: Locations of overflow sites in and near Wanaka and Hawea. Source: ORC Maps.





Figure 3: Locations of overflow sites near Glenorchy. Source: ORC Maps.



Figure 4: Locations of overflows in Kingston. Source: ORC Maps.





April 10, 2019

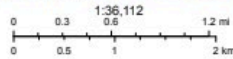


Figure 5: Location of overflow near Cardrona. Source: ORC Maps.

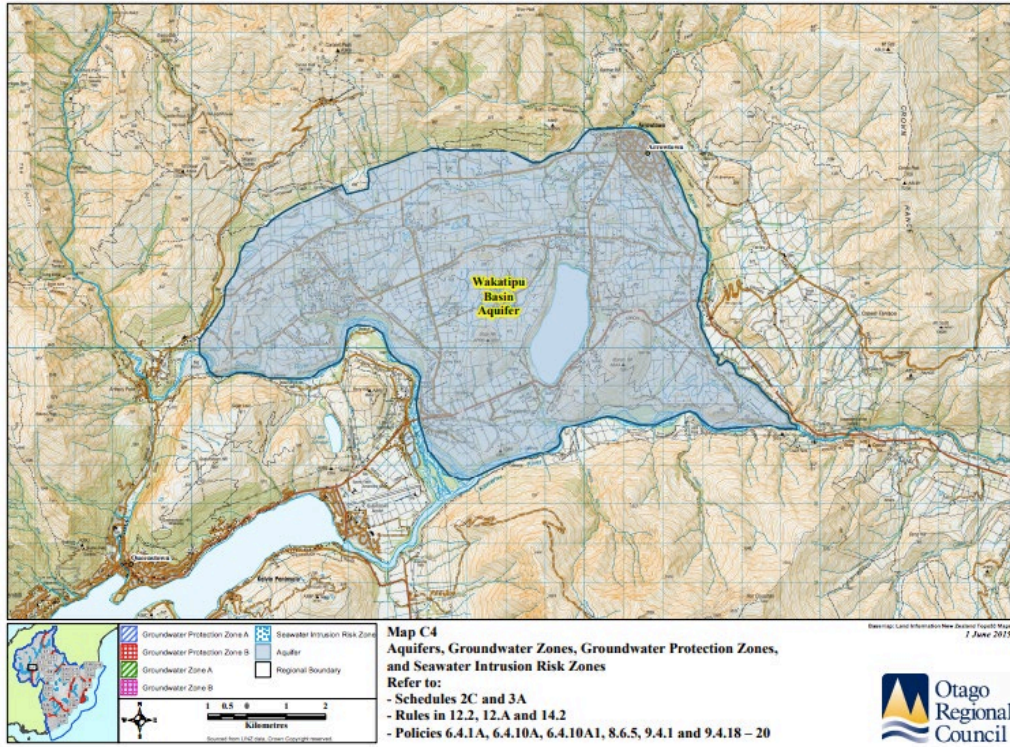
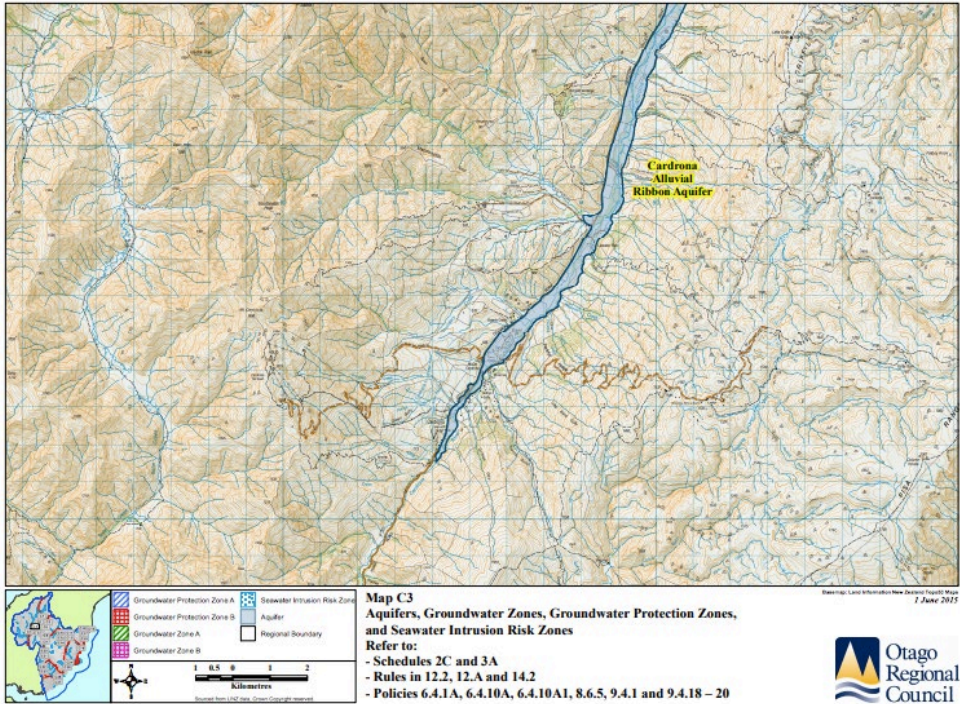
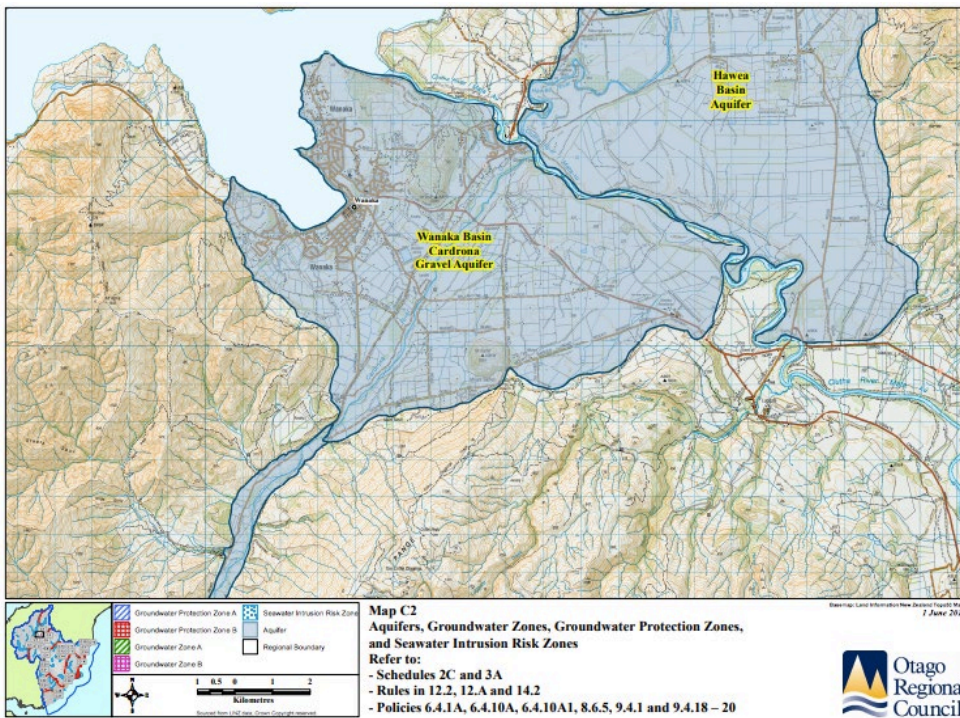


Figure 6: Outline of Wanaka Basin Groundwater Protection Zone. Source: RPW.





**Figure 7: Outline of Cardrona Alluvial Ribbon Aquifer Groundwater Protection Zone. Source: RPW.**



**Figure 8: Wanaka and Hawea Basin Aquifers Groundwater Protection Zones. Source: RPW.**



## Photographs of Previous Overflow Events



**Photograph 1 Discharge to Kawarau River<sup>1</sup> showing overflow containing female sanitary products**



**Photograph 2 : Discharge to Kawarau River<sup>2</sup> showing outlet pipe and toilet waste contained in overflow**

---

<sup>1</sup> *Otago Regional Council vs Queenstown Lakes District Council* [2017] NZDC 28767

<sup>2</sup> *Otago Regional Council vs Queenstown Lakes District Council* [2017] NZDC 28767





**Photograph 3 Discharge overflowing from a manhole across the Kelvin Heights public track adjacent to Loop Road, before flowing into Lake Wakatipu<sup>3</sup>.**

---

<sup>3</sup> *Otago Regional Council vs Queenstown Lakes District Council* [2019] NZDC 832

## Schedule 2 of the Water Conservation (Kawarau) Order 1997

### Schedule 2 Waters to be protected

All map references are NZMS 1 unless otherwise stated

Waters	Outstanding characteristics	Restrictions and prohibitions
<b>Kawarau River mainstem from Scrubby Stream to Lake Wakatipu control gates (S133:940715 to S132:615707)</b>	<b>(c) wild and scenic characteristics;</b> <b>(c) natural characteristics, in particular the return flow in the upper section when the Shotover River is in high flood;</b> <b>(d) scientific values, in particular the return flow in the upper section when the Shotover River is in high flood;</b> <b>(e) recreational purposes, in particular rafting, jetboating, and kayaking.</b>	<b>(i) no damming allowed;</b> <b>(ii) water quality to be managed to Class CR standard</b>
<b>Nevis River mainstem gorge from Nevis Crossing to Kawarau River confluence (NZTM: 5002690.6 N, 1287862.0 E to 4989927.5 N, 1285354.6 E)</b>	<b>(a) native fishery habitat (non-migratory galaxiids);</b> <b>(c) wild and scenic characteristics;</b> <b>(e) recreational purposes, in particular fishing and kayaking.</b>	<b>(i) no damming or diversion allowed;</b> <b>(ii) water quality to be managed to Class CR, Class F, and Class FS standards.</b>
<b>Nevis River mainstem above Nevis Crossing to source (NZTM: 4989927.5 N, 1285354.6 E to 4959907.3 N, 1269995.5 E)</b>	<b>(a) native fishery habitat (non-migratory galaxiids);</b> <b>(c) scenic characteristics;</b> <b>(d) scientific – biogeographic river capture;</b> <b>(e) recreational purposes, in particular fishing.</b>	<b>(i) no damming or diversion allowed;</b> <b>(ii) water quality to be managed to Class F and Class FS standards</b>
<b>Nevis River tributaries</b>	<b>(a) native fishery habitat (non-migratory galaxiids).</b>	
<b>Shotover River mainstem (at or about S132:645720 to S114:542262)</b>	<b>c) wild and scenic characteristics;</b> <b>(c) natural characteristics, in particular the high natural sediment load and active delta at confluence with Kawarau River;</b> <b>(d) scientific value, in particular the high natural sediment load and active</b>	<b>(i) no damming allowed;</b> <b>(ii) water quality to be managed to Class CR standard.</b>

	delta at confluence with Kawarau River; (e) recreational purposes, in particular rafting, kayaking, and jetboating;	
<b>Dart River mainstem from Lake Wakatipu to confluence with Beans Burn (at or about S122:291916 to S113:226162)</b>	(a) habitat for wildlife; (c) scenic characteristics; (c) natural characteristics, in particular natural turbidity; (d) scientific value, in particular natural turbidity; (g) significance in accordance with tikanga Maori, in particular sites at the mouth of the river.	(i) no damming allowed; (ii) braiding of water to be maintained.
<b>Rees River mainstem from Lake Wakatipu to confluence with Hunter (at or about S123:301915 to S114:363204)</b>	(a) habitat for wildlife; (c) scenic characteristics; (g) significance in accordance with tikanga Maori, in particular sites at the mouth of the river.	(i) no damming allowed; (ii) braiding of water to be maintained.
<b>Diamond Lake, Diamond Creek, and Reid Lake (at or about S122:290050; S122:299036 to S123:305987)</b>	(a) habitat for wildlife and quinnat salmon; (b) fishery.	(i) no damming allowed; (ii) fish passage to be maintained; (iii) water quality to be managed to Class F and Class FS standards.
<b>Lake Wakatipu (from outlet at control gates (S132:615707) to confluences of Dart River (at or about S122:291916) and Rees River (at or about S123:301915) and including whole lake)</b>	<b>(b) fishery; (c) scenic characteristics; (d) scientific value, in particular water clarity, and bryophyte community; (e) recreational purposes, in particular boating; (g) significance in accordance with tikanga Maori, in particular sites at the head of the lake, and the legend of the lake itself.</b>	<b>(i) fish passage to be maintained; (ii) water quality to be managed to Class AE, Class CR, Class F, and Class FS standards.</b>
<b>Lochy River mainstem (S132:592511 to S142:328409 and S142:307380)</b>	(b) fishery; (e) recreational purposes, in particular fishing.	(i) fish passage to be maintained; (ii) water quality to be managed to Class F and Class FS standards.
<b>Von River mainstem (S132:353629 to S141:288380 and S131:216620)</b>	(b) fishery; (e) recreational purposes, in particular fishing.	(i) fish passage to be maintained; (ii) water quality to be managed to Class F and Class FS standards.

Key:

Outstanding characteristics (s 199(2)(b) and (c) of Act):

(a) as habitat for terrestrial or aquatic organisms:



- (b) as a fishery:
- (c) for its wild, scenic or other natural characteristics:
- (d) for scientific and ecological values:
- (e) for recreational purposes:
- (f) for historical purposes:
- (g) for significance in accordance with tikanga Maori.

Restrictions and prohibitions:

References to classes are Water quality classes as in Schedule 3 of the Act.

Schedule 2: amended, on 12 December 2013, by clause 5 of the Water Conservation (Kawarau) Amendment Order 2013 (SR 2013/450).