

# Short-toed gecko

*Woodworthia* “southern mini”

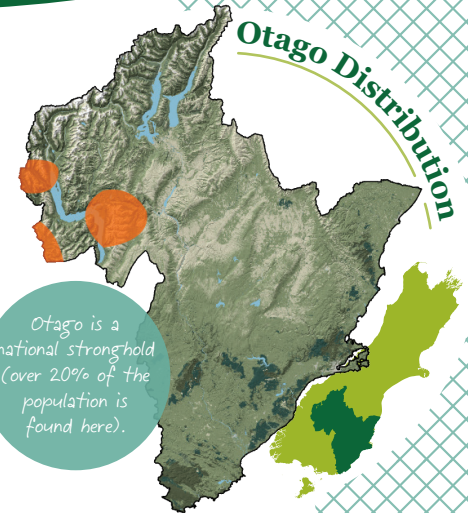
## Conservation status

Regional | At Risk: Declining  
National | At Risk: Declining

## Main threats

Habitat change  
(e.g. land development  
and fire)

Introduced predators  
(e.g. rodents, stoats,  
ferrets, and cats)



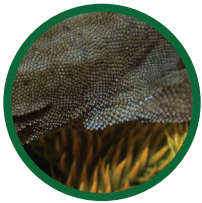
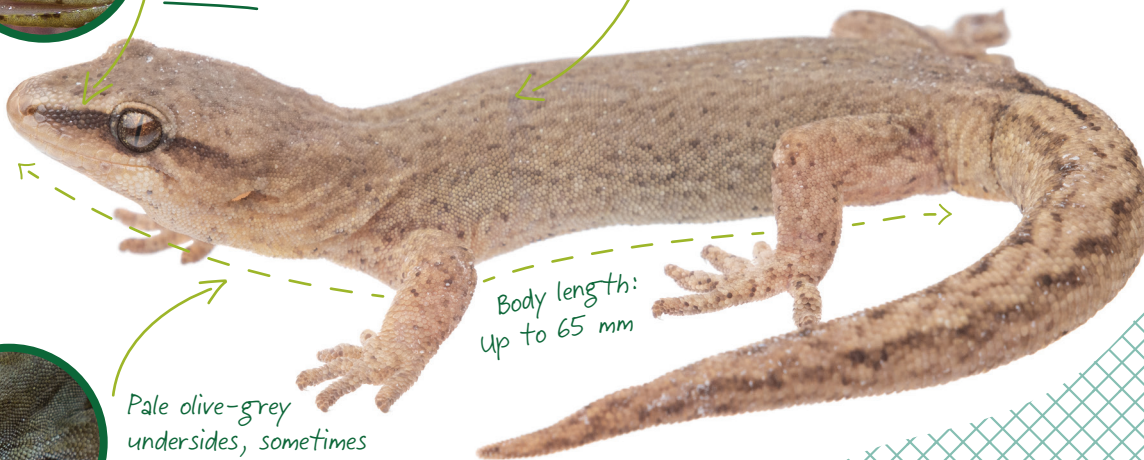
Identify me by my...



Narrow snout  
stripe with  
defined edges



Warm olive-brown  
upper surfaces



Pale olive-grey  
undersides, sometimes  
speckled

## I inhabit...

Rocky areas (e.g. scree)  
as well as shrubland and  
grassland, including some  
areas grazed by cattle.



## I eat...

Mostly invertebrates,  
including insects and spiders  
Possibly flower nectar and  
native fruits when available

## I look similar to...



Mountain beech gecko



Kawarau gecko



Kōrero gecko